

F2227 (July 2024)

Joseph Zeleznik, Ph.D., Extension Forester

# North Dakota Tree Selector

## General

**Scientific Name:** *Gleditsia triacanthos*

**Family:** Fabaceae (Legume)

**Hardiness:** Zone 4

**Leaves:** Deciduous

**Plant Type:** Tree

## Growth

**Rate:** Fast

**Mature Height:** >45'

**Longevity:** Long

**Power Line:** No

## Ornamental

**Flowers:** Inconspicuous

**Fruit:** Reddish-brown pod

**Fall Color:** Yellow

## Common Honeylocust

### Description

A fast-growing medium-to-large sized tree adapted to a wide variety of soils, including alkaline. Very susceptible to winter dieback, but hardier cultivars have become available. The largest tree in North Dakota is 60 feet tall with a canopy spread of 40 feet.

### Preferences

**Light:** Full sun.

**Water:** Prefers moist, well drained soils.

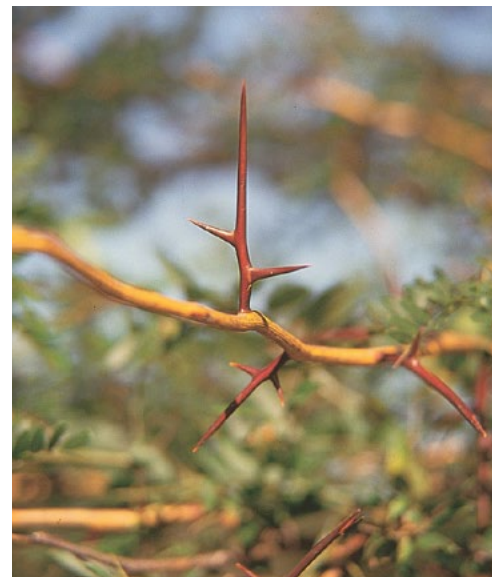
**Soil:** Adaptable to many soil types including high pH, salt tolerant and drought conditions.

### Comments

The pods contain a sweetish, gummy substance from which the name honeylocust is derived. Most cultivars are podless (seedless), though occasionally bear a few seed pods.

In its native habitat in the central and southern Great Plains, honeylocust is often laden with multi-branched thorns from 3"-6" long. However, a number of thornless varieties are available and are more appropriate for landscape situations. Some varieties are:

- Northern Acclaim® – very cold hardy; NDSU release.
- Imperial® – rounded crown. May bear a few fruit.
- Skyline® – more upright, with an open crown.



Credits: North Dakota Tree Selector Website, Manual of Woody Landscape Plants 6th edition.

**NDSU** | EXTENSION

North Dakota State University  
Fargo, North Dakota

The NDSU Extension does not endorse commercial products or companies even though reference may be made to tradenames, trademarks or service names. County commissions, North Dakota State University and U.S. Department of Agriculture cooperating. NDSU does not discriminate in its programs and activities on the basis of age, color, gender expression/identity, genetic information, marital status, national origin, participation in lawful off-campus activity, physical or mental disability, pregnancy, public assistance status, race, religion, sex, sexual orientation, spousal relationship to current employee, or veteran status, as applicable. Direct inquiries to Vice Provost for Title IX/ADA Coordinator, Old Main 201, NDSU Main Campus, 701-231-7708, ndsu.eoaa@ndsu.edu. This publication will be made available in alternative formats for people with disabilities upon request, 701-231-7881.