

MWPS-72425

Confined Beef Feeding

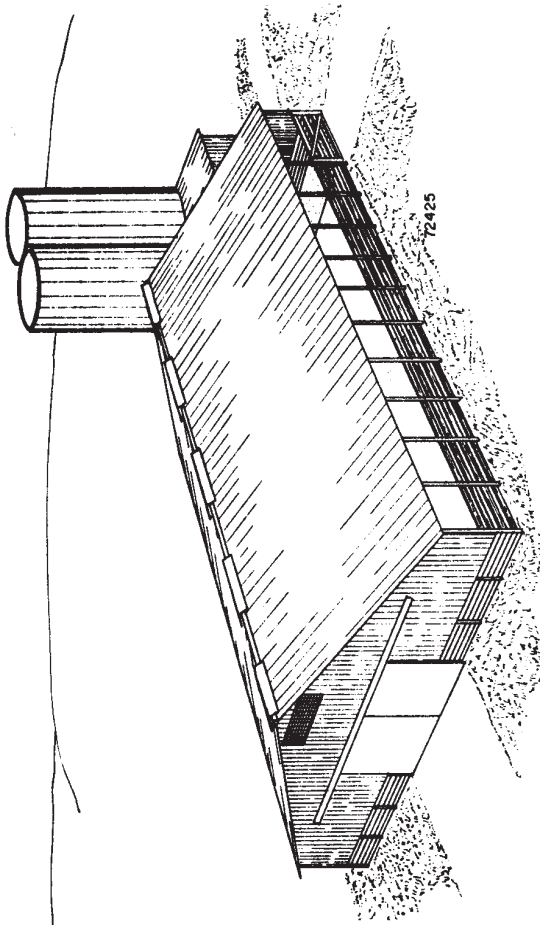
CAUTION!

Additional professional services will be required to tailor this plan to your situation, including but not limited to: assurance of compliance with codes and regulations; review of specifications for materials and equipment; supervision of site selection, bid letting and construction; and provision for utilities, waste management, roads or other access. **Furthermore, any deviation from the given specifications may result in structural failure, property damage, and personal injury including loss of life.**

WARRANTY DISCLAIMER

This plan provides conceptual information only. **Neither midwest plan service nor any of the cooperating land-grant universities, or their respective agents or employees, have made, and do not hereby make, any representation, warranty or covenant with respect to the specifications in this plan.** Additional professional services will be required to tailor this plan to your situation, including but not limited to: assurance of compliance with codes and regulations; review of specifications for materials and equipment; supervision of site selection, bid letting and construction; and provision for utilities, waste management, roads or other access.

MIDWEST PLAN SERVICE
Cooperative Extension Work in Agriculture and Home Economics and Agricultural Experiment Stations of North Central Region - USDA Cooperating
Confined Beef Feeding
Title Page
MIDWEST PLAN NO.



BEEF CONFINEMENT

Provide more building space for confined feeding than for conventional layouts. Fencing, outdoor paving, total space required, and its area to be cleaned are reduced. Feeding area should be cleaned daily.

One arrangement using slotted floors is illustrated. No bedding is used. Equipment for liquid handling is required.

Mechanical Feeding utilizes both sides of the bunk. The Fenceline Bunk, shown on sheet two, would extend the full length of the building and would provide only 8" each to 100 head

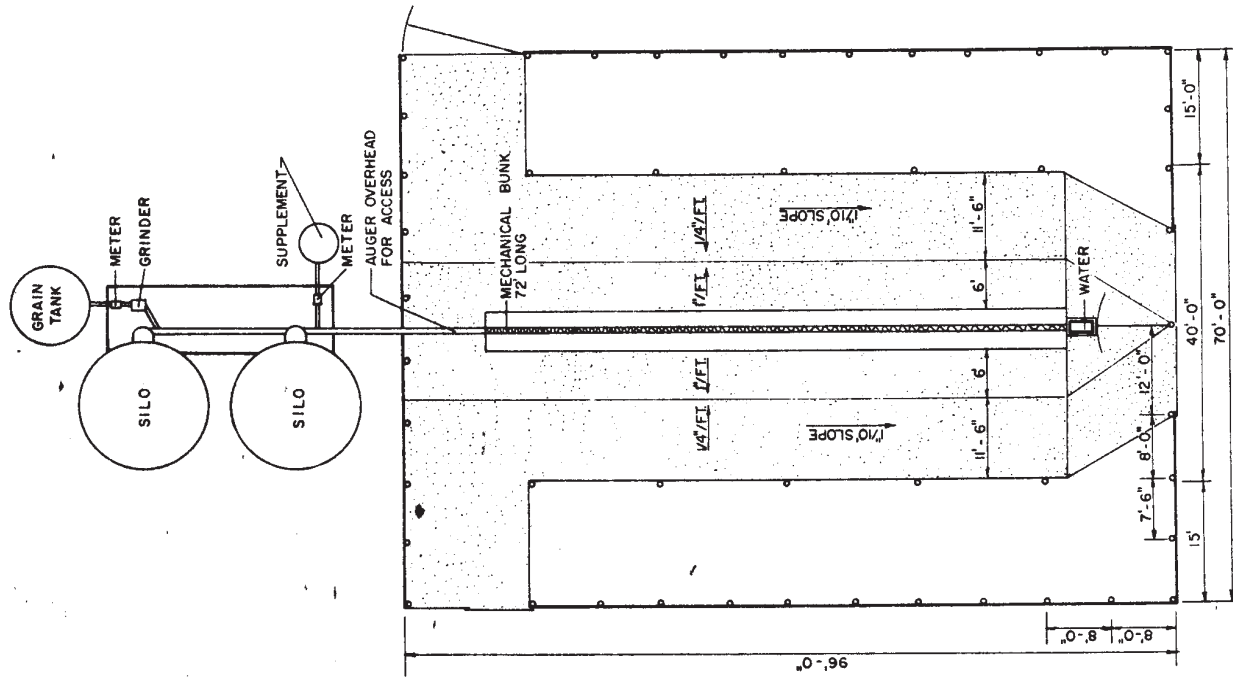
SPACE REQUIREMENTS

- Solid Floors 25 sq ft/head to 500^H
- 35 sq ft/head to market
- Slotted Floors 15 sq ft/head to 500^H
- 25 sq ft/head to market

Bunk: 6"/head with grain and silage available most of the time.
 7"/head for 3 or more feedings per day.
 22" to 26" if all animals eat at the same time.
 1 watering spacing/40 head

EQUIPMENT PLANS

See your county agricultural agent for "Beef Equipment Plans," \$1.00, for detailed plans for feeders, corral equipment, etc.



Capacity: about 200 head depending on size of animals and feeding

SHEET 4: 40' SPAN TRUSSES

MIDWEST PLAN SERVICE

Cooperative Extension Work in
 Agriculture and Home Economics
 and Agricultural Experiment Stations
 of North Central Region - USDA Cooperating

CONFINED BEEF FEEDING

Sheet 1 of 4 Sheets

MIDWEST PLAN NO. 72425

Copyright © 1964 Midwest Plan Service

