

MWPS-72432

Pole Barn

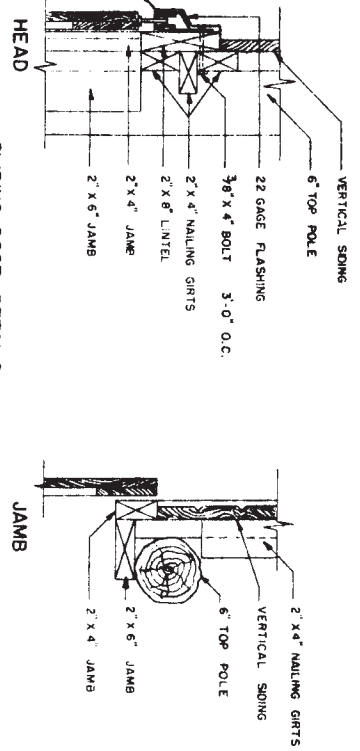
CAUTION!

Additional professional services will be required to tailor this plan to your situation, including but not limited to: assurance of compliance with codes and regulations; review of specifications for materials and equipment; supervision of site selection, bid letting and construction; and provision for utilities, waste management, roads or other access. **Furthermore, any deviation from the given specifications may result in structural failure, property damage, and personal injury including loss of life.**

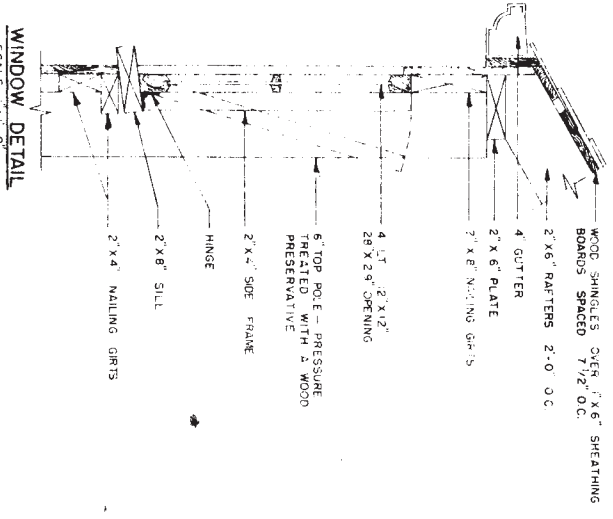
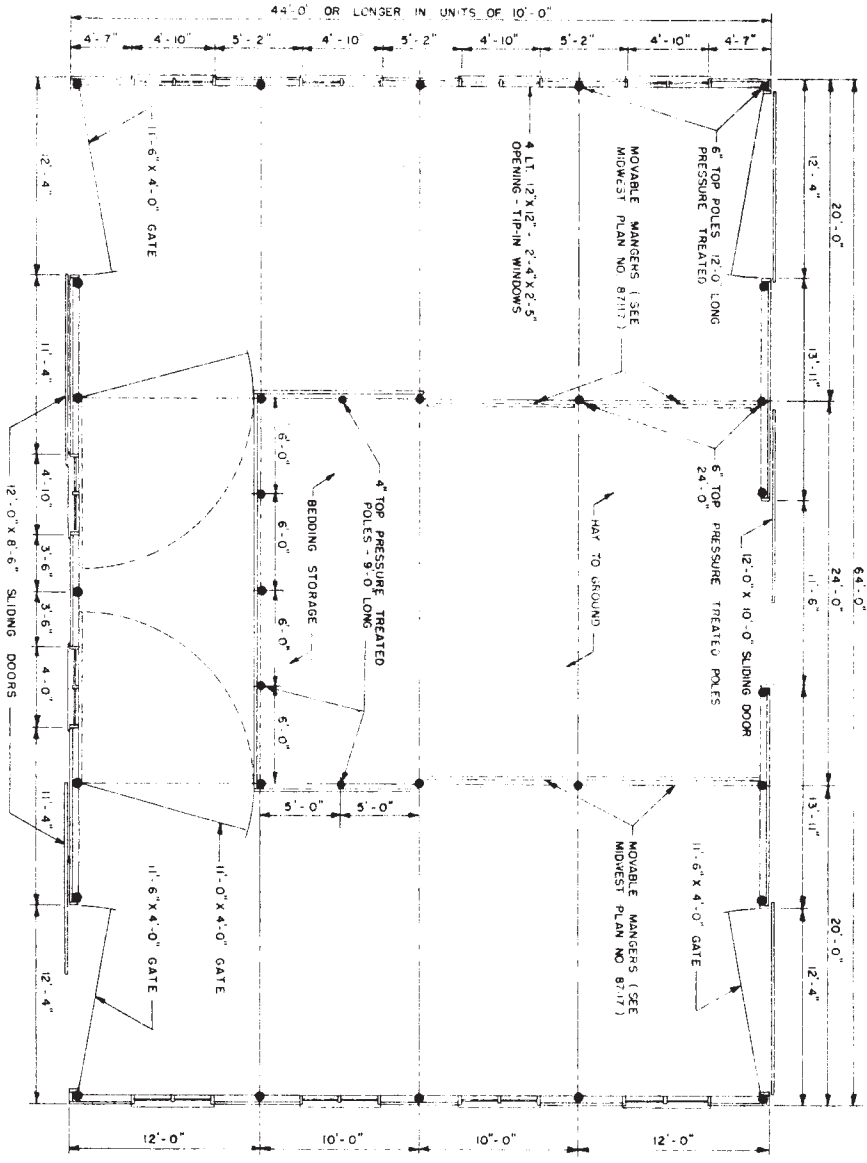
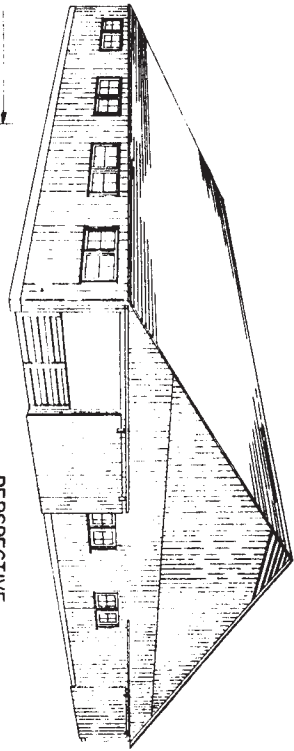
WARRANTY DISCLAIMER

This plan provides conceptual information only. **Neither midwest plan service nor any of the cooperating land-grant universities, or their respective agents or employees, have made, and do not hereby make, any representation, warranty or covenant with respect to the specifications in this plan.** Additional professional services will be required to tailor this plan to your situation, including but not limited to: assurance of compliance with codes and regulations; review of specifications for materials and equipment; supervision of site selection, bid letting and construction; and provision for utilities, waste management, roads or other access.

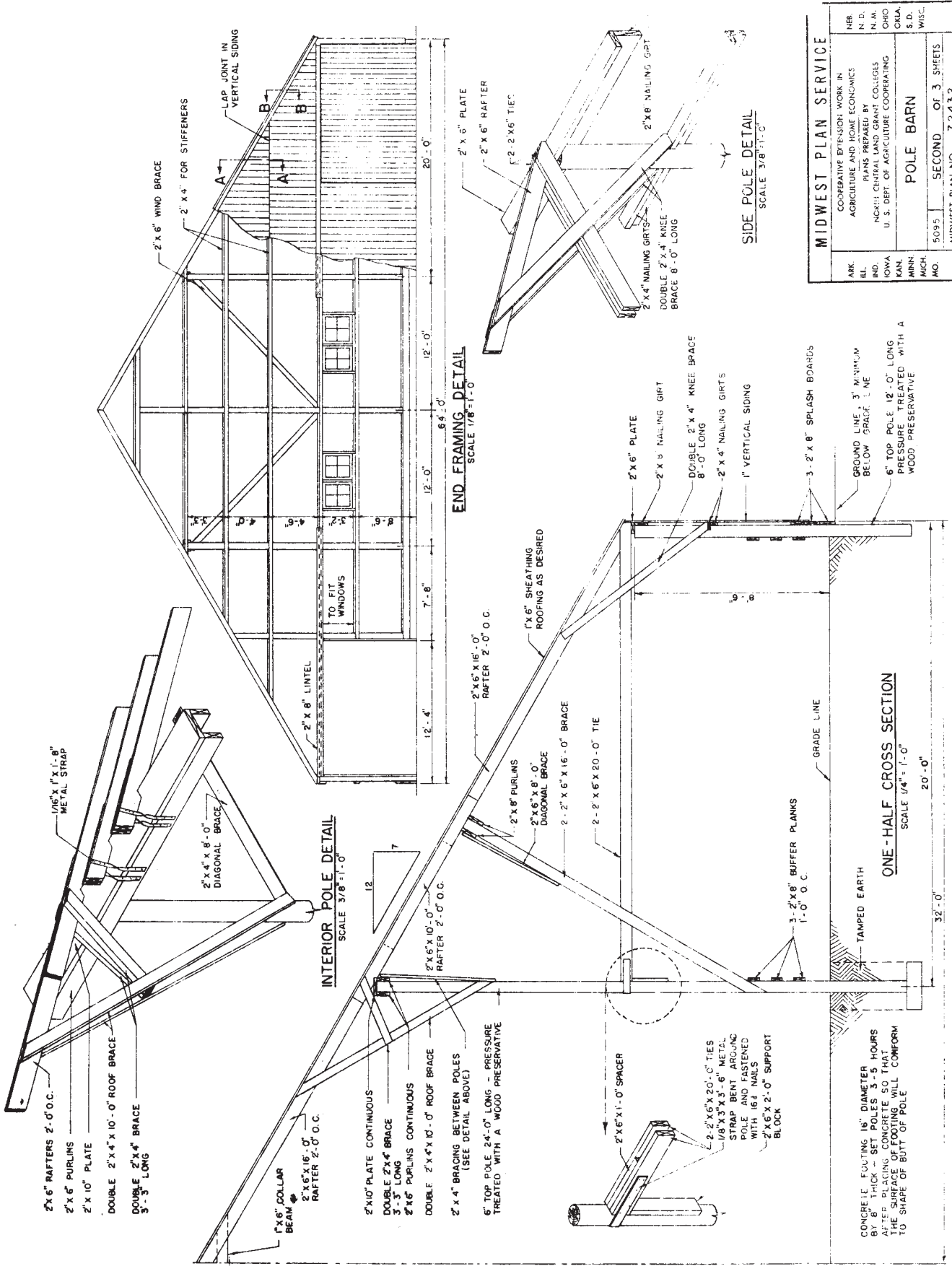
MIDWEST PLAN SERVICE
Cooperative Extension Work in Agriculture and Home Economics and Agricultural Experiment Stations of North Central Region - USDA Cooperating
Pole Barn
Title Page
MIDWEST PLAN NO. 72432



NOTE: THIS PLAN IS ESPECIALLY
DESIGNED FOR REMODELING EXISTING
BARN OF THIS TYPE



MIDWEST PLAN SERVICE	
AKR. COOPERATIVE EXTENSION WORK IN AGRICULTURE AND HOME ECONOMICS	N.B.
ILL. PLANS PREPARED BY NORTH CENTRAL LAND GRANT COLLEGES	N.D.
IOWA U. S. DEPT. OF AGRICULTURE COOPERATING	N.M.
KAN.	OHIO
MICH.	S.D.
MO.	WIS.
5095	FIRST OF 3 SHEETS
MIDWEST PLAN NO. 72432	



MIDWEST PLAN SERVICE	
ARK.	NEB.
ILL.	N. D.
IOWA	N. M.
KAN.	OHIO
MINN.	OKLA.
MICH.	S. D.
MO.	WISC.
COOPERATIVE EXTENSION WORK IN AGRICULTURE AND HOME ECONOMICS	
PLANS PREPARED BY	
NORTH CENTRAL LAND GRANT COLLEGE	
U. S. DEPT. OF AGRICULTURE COOPERATING	
POLE BARN	
5095	SECOND OF 3 SHEETS
MIDWEST PLAN NO. 72432	

Sheet 3 includes detail of cattle gate, doors, and endwall framing.