

MWPS-72684

Sow & Pig Nursery

Open shed with lot, 12 litters.

CAUTION!

Additional professional services will be required to tailor this plan to your situation, including but not limited to: assurance of compliance with codes and regulations; review of specifications for materials and equipment; supervision of site selection, bid letting and construction; and provision for utilities, waste management, roads or other access. **Furthermore, any deviation from the given specifications may result in structural failure, property damage, and personal injury including loss of life.**

WARRANTY DISCLAIMER

This plan provides conceptual information only. **Neither midwest plan service nor any of the cooperating land-grant universities, or their respective agents or employees, have made, and do not hereby make, any representation, warranty or covenant with respect to the specifications in this plan.** Additional professional services will be required to tailor this plan to your situation, including but not limited to: assurance of compliance with codes and regulations; review of specifications for materials and equipment; supervision of site selection, bid letting and construction; and provision for utilities, waste management, roads or other access.

| |
|---|
| MIDWEST PLAN SERVICE |
| Cooperative Extension Work in Agriculture and Home Economics and Agricultural Experiment Stations of North Central Region - USDA Cooperating |
| Sow & Pig Nursery Open Shed with Lot, 12 Litters |
| Title Page |
| MIDWEST PLAN NO. 72684 |

**Plan MWPS-72684
SOW AND PIG NURSERY
Open Shed with Lot, 12 Litters**

This plan is for a 16' x 48' pole frame-open shed with an outdoor lot. The unit houses 12 litters in 6 pens.

This plan is intended for the producer who wants to get more of his operation off pasture and out of the mud, but who does not want the high investment of an enclosed building. It is suitable for farrowing up to six times a year, but midwinter farrowing may be skipped in colder climates.

Locate the unit where surface drainage can be channeled away. Runoff from a lot must not pollute a waterway—install an approved disposal system, such as a settling basin or a serpentine infiltration channel.

The creep areas are next to the alley for easy access by the operator. Install plywood hovers and a heat lamp in each creep. The creeps are shown built of exterior plywood, but hardwood boards will also work well.

A 4' swing gate separates each creep area from the alley. A plywood panel that fits out vertically separates the creep from the rest of the pen. Install folding doors or curtains along the front wall to reduce cold drafts in winter.

Partitions between the pens are shown solid plank or concrete out to the gutter to reduce drafts on young pigs. A further improvement is to cast 1 1/2" high curbs (2x12 forms) under each partition. The smooth concrete will make scraping easier and will last longer than wood exposed to water and manure.

Floor Slopes and Building Construction
Slope floors down to the manure alley to remove rainwater and melting snow from the feed floor. Side slope the manure alley to drain toward the manure storage.

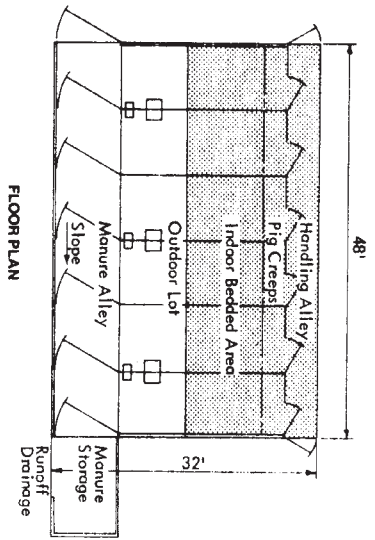
Especially if more than the length of building shown is built, the manure alley gets too deep and the step from the feed floor and the manure alley gets too high. Therefore, this plan recommends a double-slope system.

- The building is level, or horizontal, but the floors slope to one end.
- Slope the entire floor about 1/4" per foot (4' x 48') toward the low end from left to right on Floor Plan 1.21.
- Slope the floor sections as labeled (47" ft. in doors). If feeding area, the manure alley toward the step between the feeding area and the manure alley (Building Cross Section 1.31).
- Adjust framing below the rear ventilation doors and over concrete partitions so the roof and the vent doors are level.
- Make the partition walls of uniform height.
- Back slope the manure storage area so that hounds can be drained off. The runoff can cause pollution, provide for approved disposal.

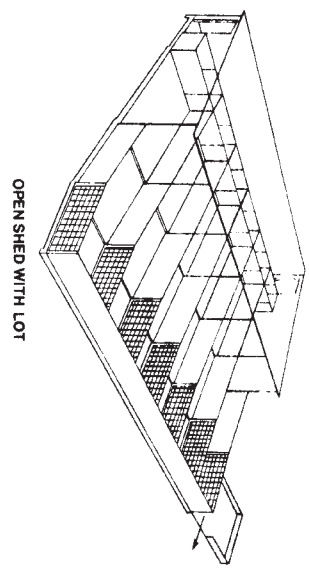
Note on page four that the outdoor lot tilts to the right so that all drainage is toward the lower right corner of the plan.

Building space and production cycles.

Although many variations are successful, the following are typical meat hog production systems. Plan building capacity for some extra animals to allow for large litter size or slow growth rate. Farrow during 3 weeks. Some stalls can be used twice.



FLOOR PLAN

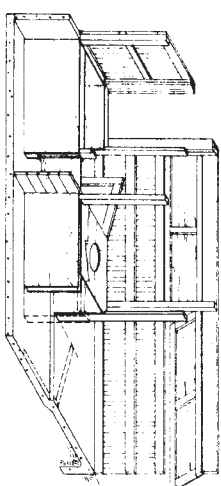


OPEN SHED WITH LOT

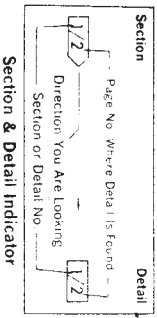
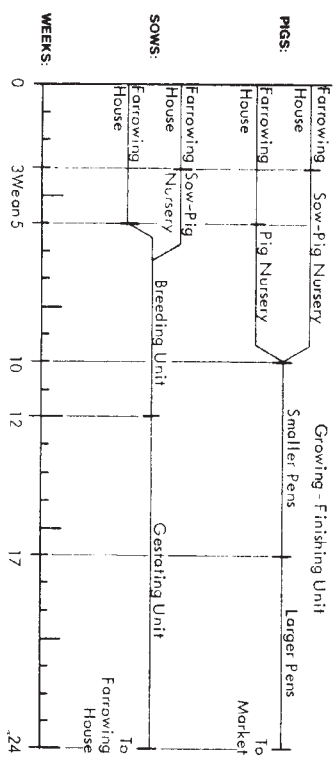
- Either:
- Move sows and litters to sow-pig nursing pens at 1-3 weeks, depending on how soon the farrowing stalls are needed for the next sows.
 - Wean pigs at 3-6 weeks, putting 3-4 litters together.
 - Return sows to breeding and gestation facilities.
- Or:
- Wean pigs at 4-6 weeks (20-25 lb).
 - Move pigs to nursery.
 - Return sows to breeding and gestation facilities.

Move pigs to finishing unit at 10 weeks (60 lb). As farrowing intensifies to more than 6 times per year, pigs may be moved at about 8 weeks. Put into smaller pens if you have two pen sizes. Put more pigs per pen if you have only one pen size. Move pigs to larger pens, or reduce number of pigs per pen at about 17 weeks (125 lb). As they approach market weight, and if the finishing unit is crowded, larger hogs can be marketed early. Sows are often rebred during the first or second heat period after weaning, and farrow about 16 weeks later.

CREEP AND ALLEY



TYPICAL HOUSING CYCLES



Section & Detail Indicator

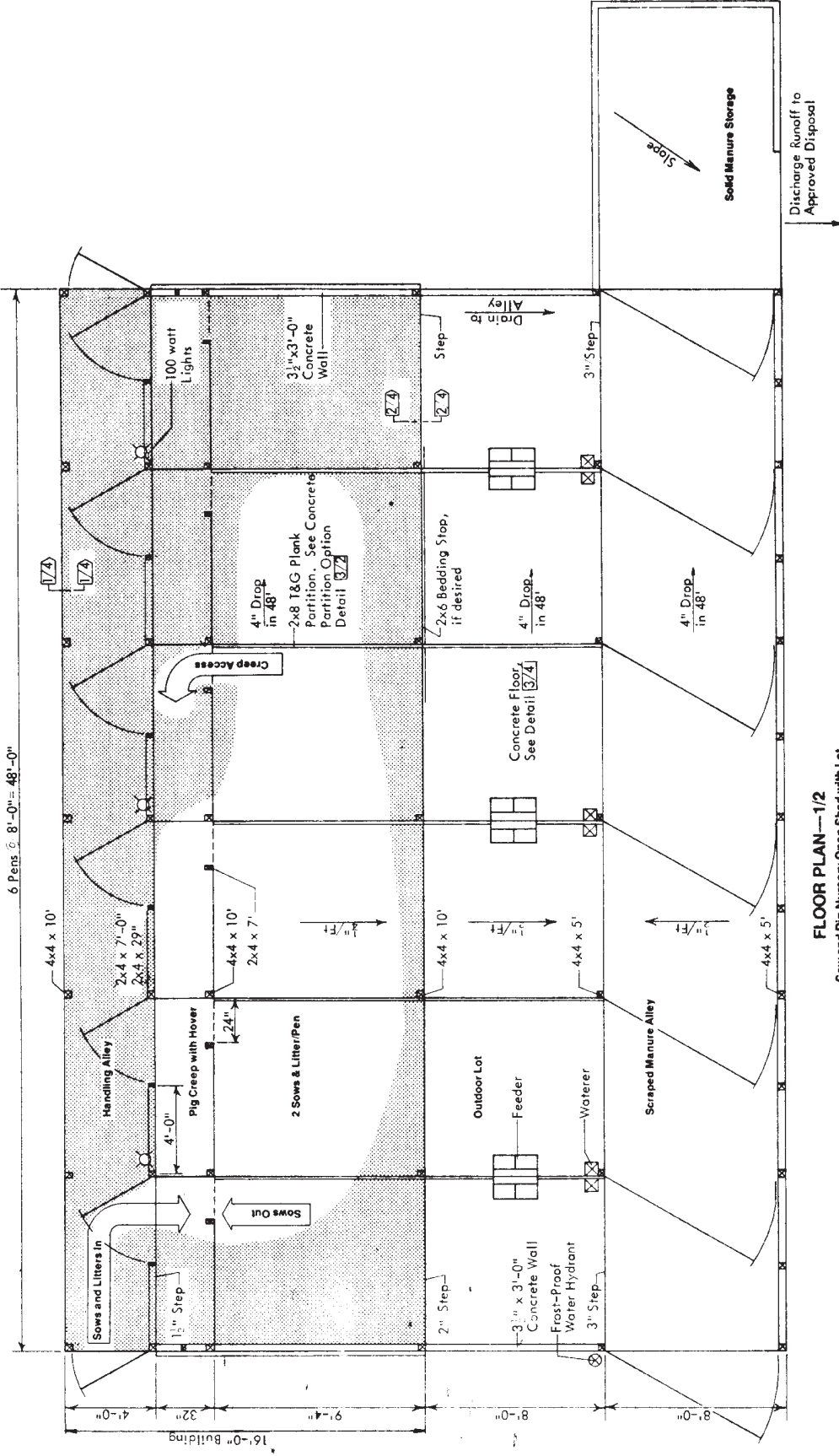
MIDWEST PLAN SERVICE

Cooperative Extension & Research in Agriculture & Home Economics in the 12 North Central Universities—USDA Cooperating

SOW & PIG NURSERY

Open Shed with Lot, 12 Litters

| | | |
|---------|---------------------|-------------|
| 4 Pages | Plan No. MWPS-72684 | Page 1 of 4 |
|---------|---------------------|-------------|

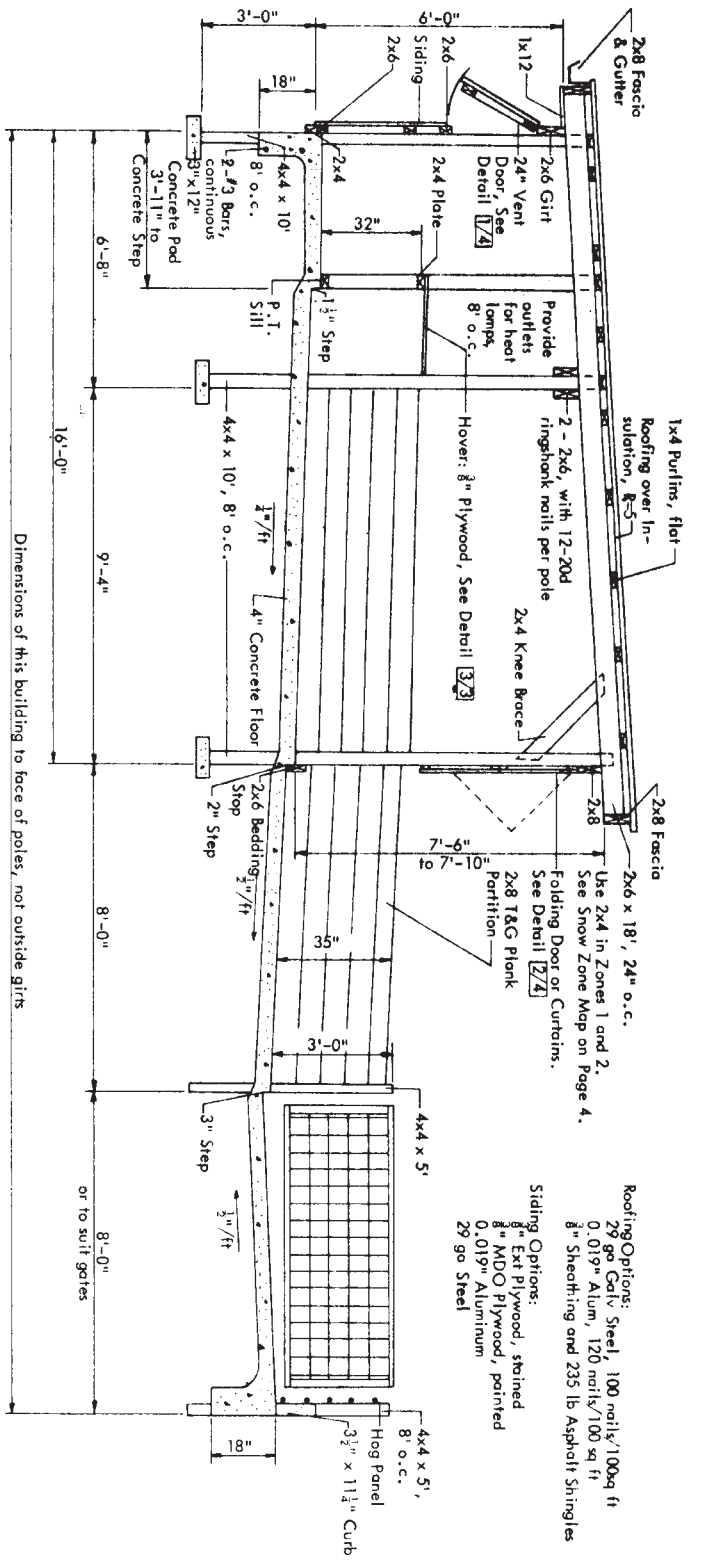


FLOOR PLAN—1/2

Sow and Pig Nursery Open Shed with Lot.
 Entire floor plan slopes 4"/48' down to right.

| | | | |
|--|-----------------------|----------------|--|
| MIDWEST PLAN SERVICE | | | |
| Cooperative Extension & Research in Agriculture & Home Economics in the 12 North Central Universities—USDA Cooperating | | | |
| SOW & PIG NURSERY | | | |
| Open Shed with Lot, 12 Litters | | | |
| 4 Pages | Plan No. mwp-72664 | Page 2 of 4 | |

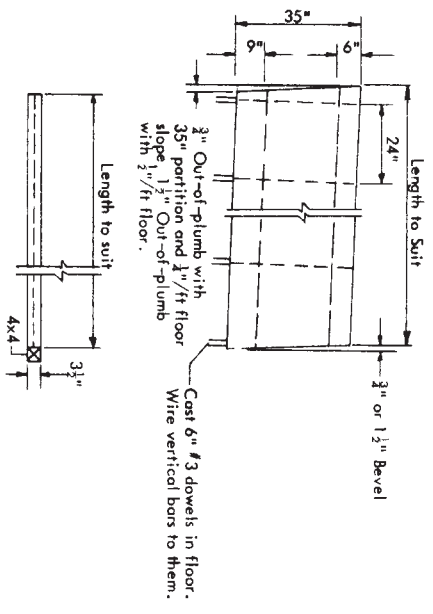
Copyright © 1978, Midwest Plan Service, Ames, IA 50011



CROSS SECTION—1/3
Sow and Pig Nursery Open Shed with Lot.

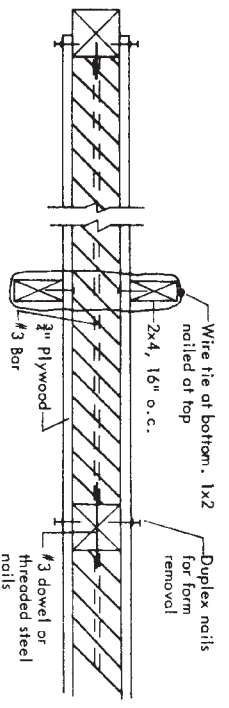
Roofing Options:
29 ga Galv. Steel, 100 nails/100sq ft
0.019" Alum., 120 nails/100 sq ft
3" Sheathing and 235 lb Asphalt Shingles

Siding Options:
3" Ext Plywood, stained
3" MDO Plywood, painted
0.019" Aluminum
29 ga Steel



CONCRETE PARTITION DETAIL—2/3

If welded wire mesh is available in flat sheets (not rolls), it can be used instead of 3" bars.



HOVER—3/3

