

# MWPS-75248

## Single 3-Side-Opening Parlor

### CAUTION!

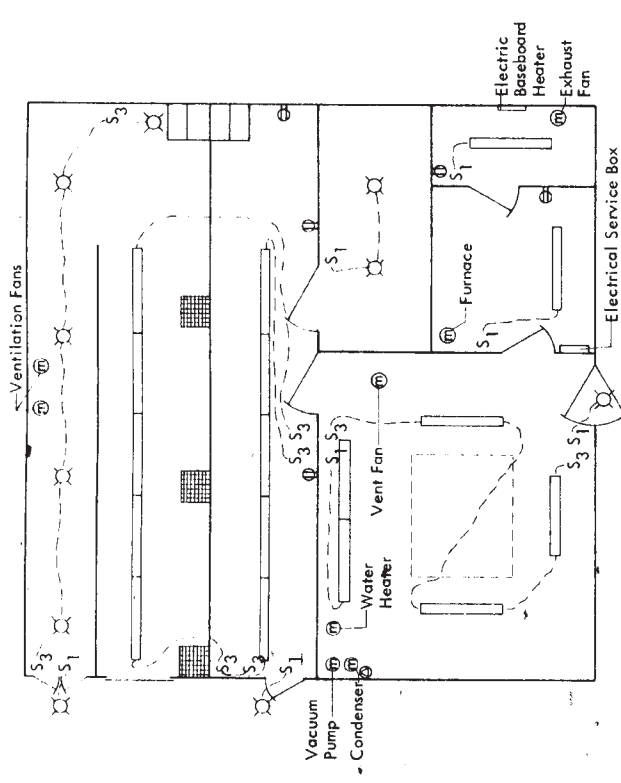
Additional professional services will be required to tailor this plan to your situation, including but not limited to: assurance of compliance with codes and regulations; review of specifications for materials and equipment; supervision of site selection, bid letting and construction; and provision for utilities, waste management, roads or other access. **Furthermore, any deviation from the given specifications may result in structural failure, property damage, and personal injury including loss of life.**

### WARRANTY DISCLAIMER

This plan provides conceptual information only. **Neither midwest plan service nor any of the cooperating land-grant universities, or their respective agents or employees, have made, and do not hereby make, any representation, warranty or covenant with respect to the specifications in this plan.** Additional professional services will be required to tailor this plan to your situation, including but not limited to: assurance of compliance with codes and regulations; review of specifications for materials and equipment; supervision of site selection, bid letting and construction; and provision for utilities, waste management, roads or other access.

<b>MIDWEST PLAN SERVICE</b>
Cooperative Extension Work in Agriculture and Home Economics and Agricultural Experiment Stations of North Central Region - USDA Cooperating
Single 3-Side-Opening Parlor
Title Page
MIDWEST PLAN NO. 75248



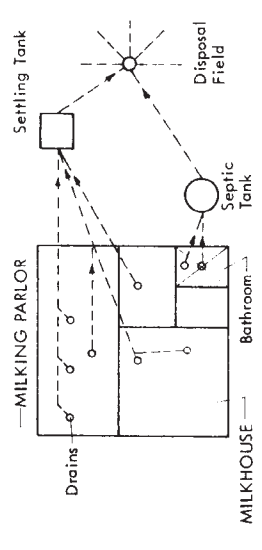


**ELECTRICAL PLAN—1/2**

- KEY**
- 2 - 40 watt Fluorescent Lights
  - S1 Single Pole Switch
  - S3 Three-Way Switch
  - E 100 watt Light Bulb Outlet
  - E3 120 volt Outlet
  - M 240 volt Outlet
  - Ⓜ Equipment Motor
- Control fans with manual switches.
  - Use weatherproof lighting fixtures, switches, and outlets.
  - Elevate outlets and switches 6' in milking parlor to avoid cow damage and remaining outlets 2' for floor wash water.
  - Equipment may be wired directly in to a circuit or connected to an appropriate outlet.
  - Locate lights to avoid equipment interference for specific tasks.
  - Wire to meet all state and local codes.
  - Service box is 120/240, 1Ø, sized according to equipment selected.

**Lumber Specifications**

- Studs Construction Grade (Doug Fir, Southern Yellow Pine or Hem Fir)
- Trusses No. 1 (Doug Fir, Southern Yellow Pine or Hem-Fir). See truss page
- Plywood No. 1 (Doug Fir, Southern Yellow Pine or Hem-Fir). See truss page
- Roof Sheathing— $\frac{3}{4}$ " C-C Ext. (Identification Index: 20.0)
- Siding— $\frac{3}{4}$ " C-C Ext. with medium density overlay.
- Sills and Fascia Pressure Preservative Treated (Southern Yellow Pine or equivalent) 9 pct. Pests—0.40 pct. ACC—0.25 pct. ACA or CCN (Type A or B)—0.23 pct.



**MILKHOUSE WASTE DISPOSAL—2/2**  
 If liquid manure handling is used in the Dairy Barn, all wastes except those from the bathroom may go into the manure tank.  
 Check your waste disposal plan with local health authorities.  
 Milk solids may plug disposal fields.

