

MWPS-75267

20 x 24 Milkhouse

with Bath, Office, & Utility.

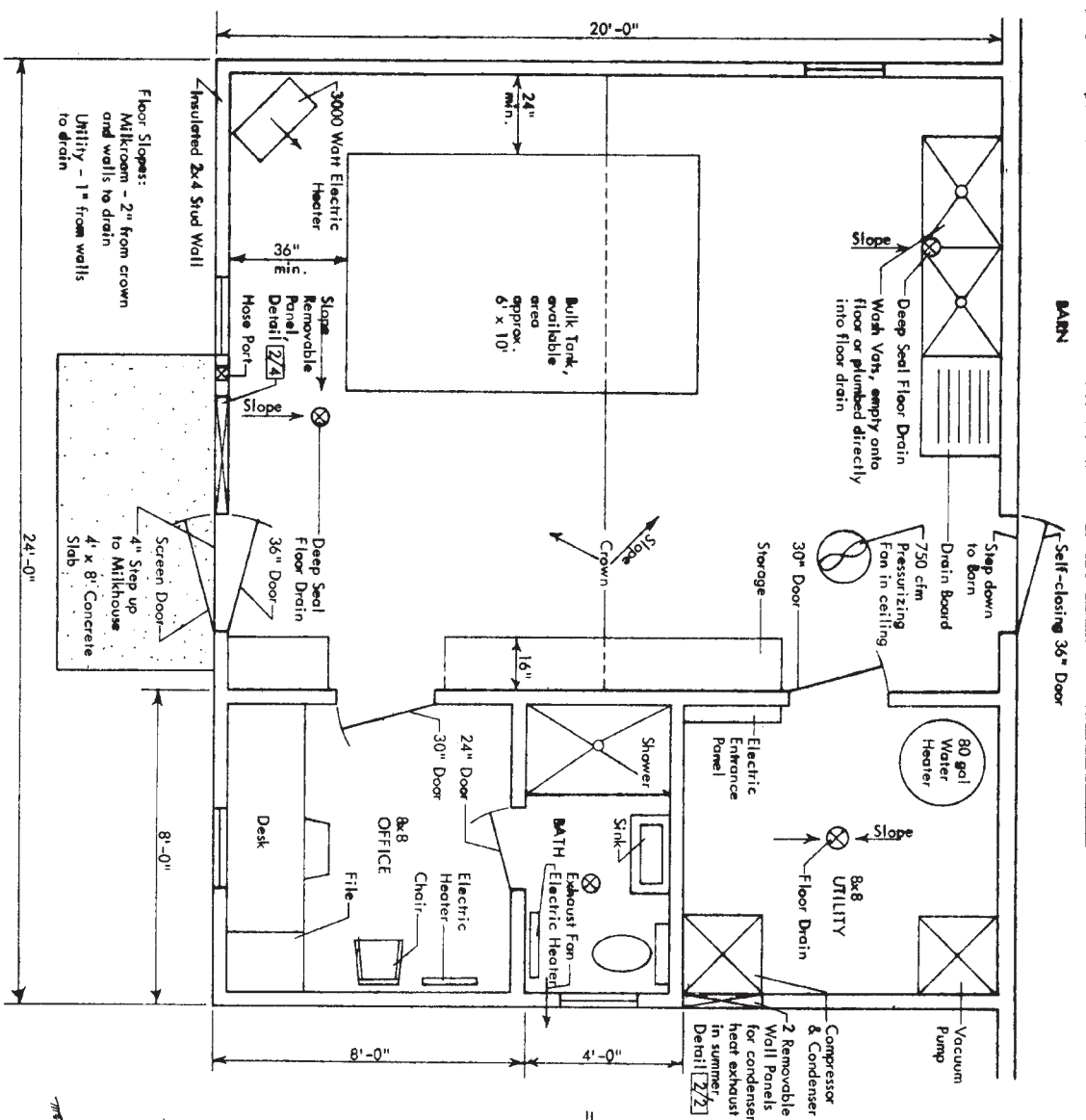
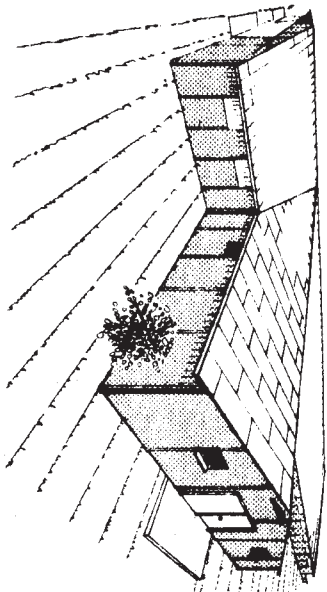
CAUTION!

Additional professional services will be required to tailor this plan to your situation, including but not limited to: assurance of compliance with codes and regulations; review of specifications for materials and equipment; supervision of site selection, bid letting and construction; and provision for utilities, waste management, roads or other access. **Furthermore, any deviation from the given specifications may result in structural failure, property damage, and personal injury including loss of life.**

WARRANTY DISCLAIMER

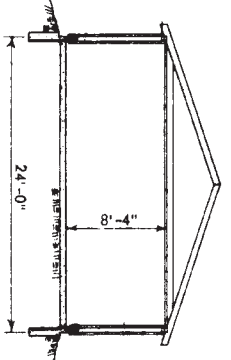
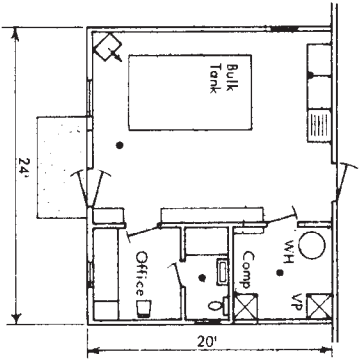
This plan provides conceptual information only. **Neither midwest plan service nor any of the cooperating land-grant universities, or their respective agents or employees, have made, and do not hereby make, any representation, warranty or covenant with respect to the specifications in this plan.** Additional professional services will be required to tailor this plan to your situation, including but not limited to: assurance of compliance with codes and regulations; review of specifications for materials and equipment; supervision of site selection, bid letting and construction; and provision for utilities, waste management, roads or other access.

MIDWEST PLAN SERVICE
Cooperative Extension Work in Agriculture and Home Economics and Agricultural Experiment Stations of North Central Region - USDA Cooperating
20 x 24 Milkhouse with Bath, Office & Utility
Title Page
MIDWEST PLAN NO. 75267



FLOOR PLAN 1/1

4" concrete slab, thickens to 8" under bulk tank.
 It may be desirable to provide a 2" step up to the utility room and office to prevent wash water from entering.



Before you build this milkhouse consult with and get the approval of the health authorities having control of the sale of your milk.

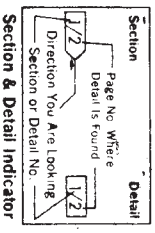


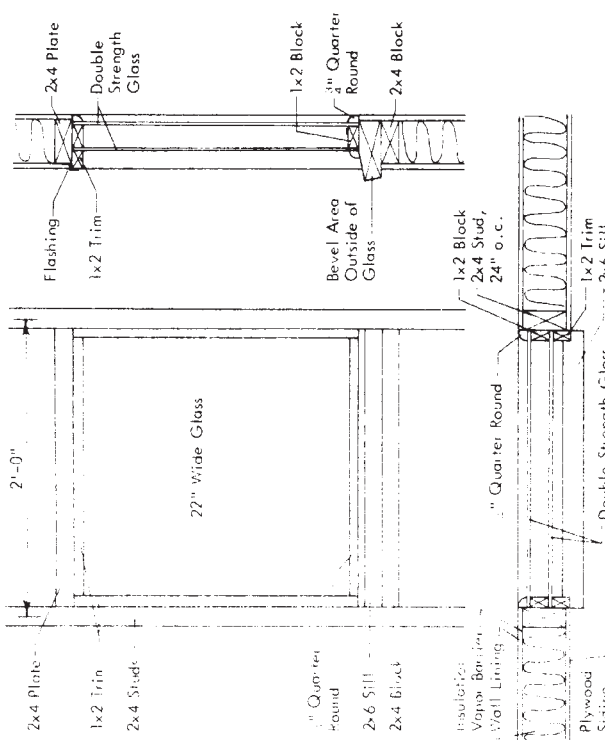
TABLE OF CONTENTS

Description	Page
Floor Plan	1
Condenser Ventilation Details	2
Fixed Window Framing	2
Electrical Plan	3
Wall Section	3
Milkhouse Waste Disposal	4
Removable Wash Door and Removable Panel Detail	4

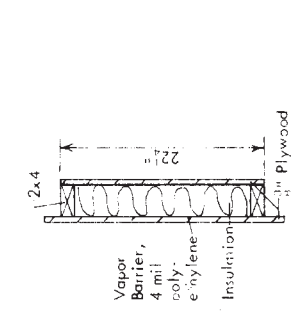
MIDWEST PLAN SERVICE
 Cooperative Extension Work in
 Agriculture and Home Economics
 and Agricultural Experiment Stations
 of North Central Region - USDA Cooperating

20 x 24 MILKHOUSE
 with Bath, Office, & Utility

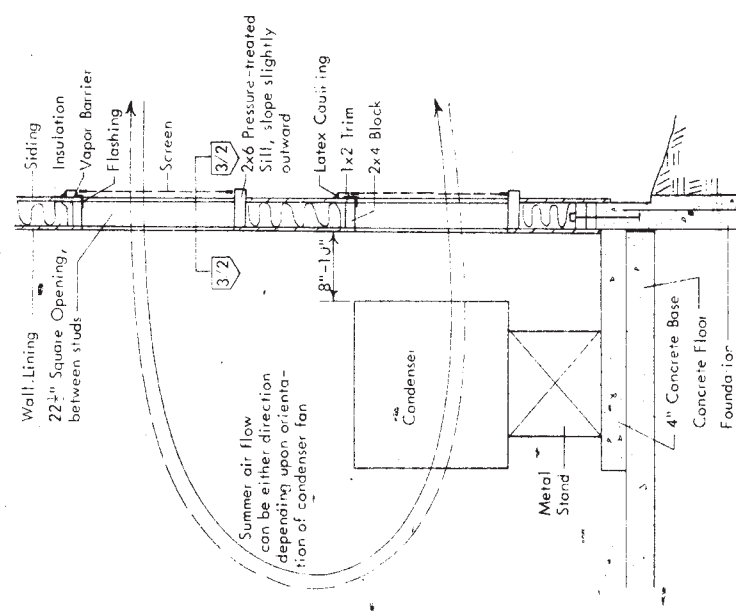
Page 1 of 4 Pages
 MIDWEST PLAN NO. 75267
 Copyright ©1975 Midwest Plan Service



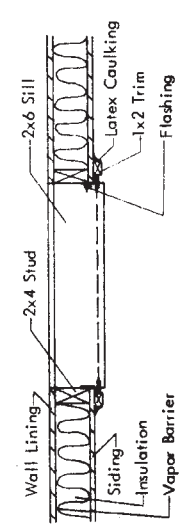
FIXED WINDOW FRAMING 4/2
Seal trim and quarter round with latex caulking.



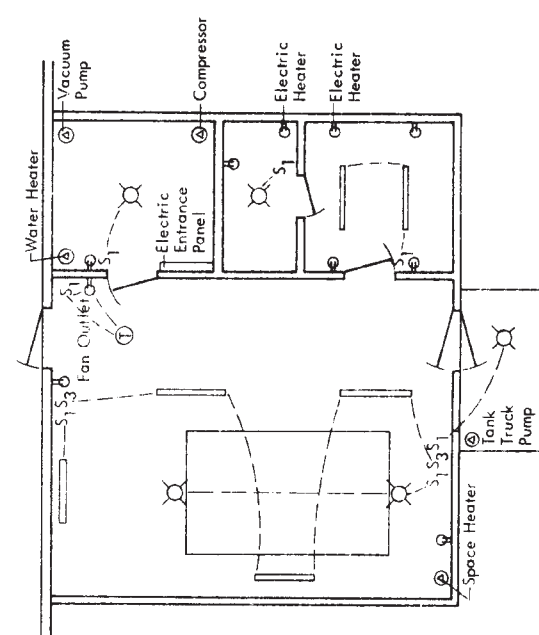
REMOVABLE WALL PANEL 2/2
Install in screened opening in cold weather so condenser heat remains in milkhouse.



CONDENSER VENTILATION DETAIL 1/2



SECTION 3/2



ELECTRICAL PLAN 5/2

Use all weatherproof outlets and switches. Elevate outlets 2' for floor wash water. Equipment may be wired directly in to circuits. Install swivel base flood lights only if bulk tank does not have automatic washer.

Wiring Key:

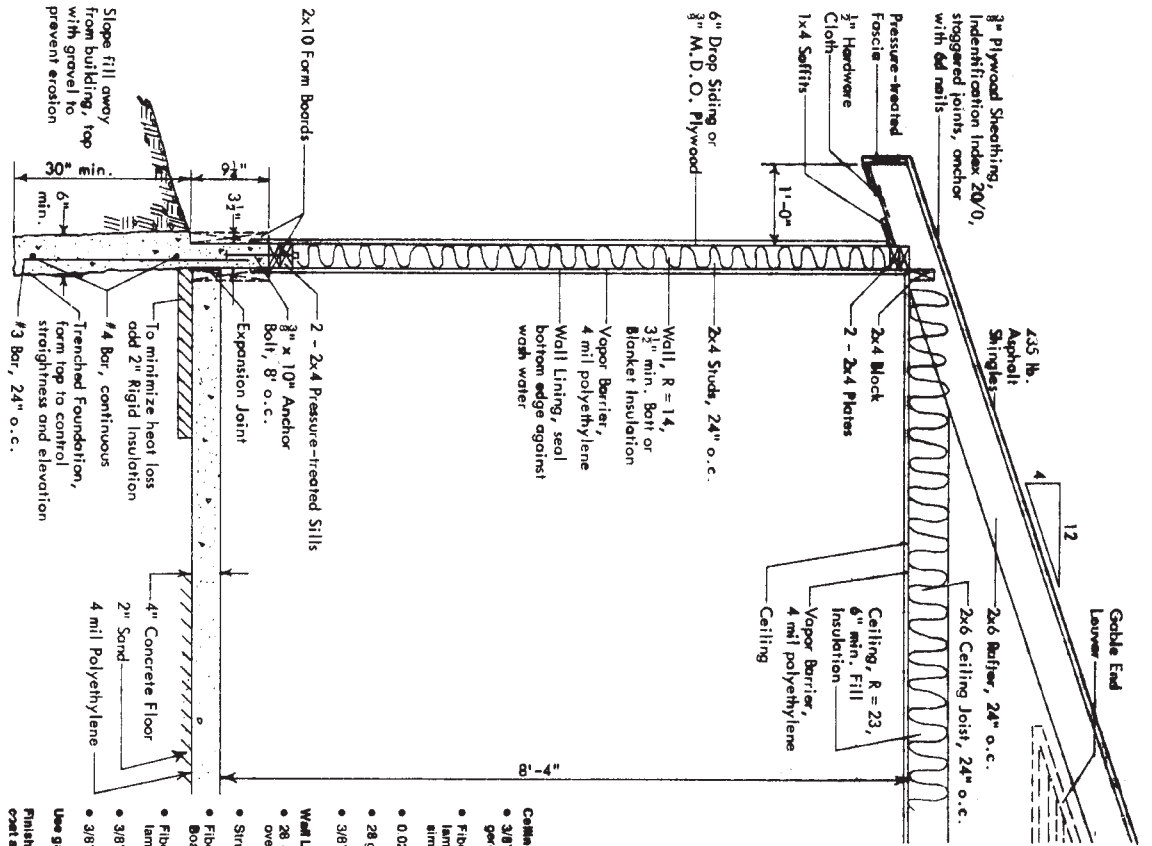
S ₁	Single Pole Switch
S ₃	Three-Way Switch
○	150 Watt Swivel Base Flood Light
○	100 Watt Light Bulb Outlet
○	2-40 Watt Fluorescent Light
○	120 Volt Outlet
○	240 Volt Outlet
⊕	Thermostat

Wire according to load codes.

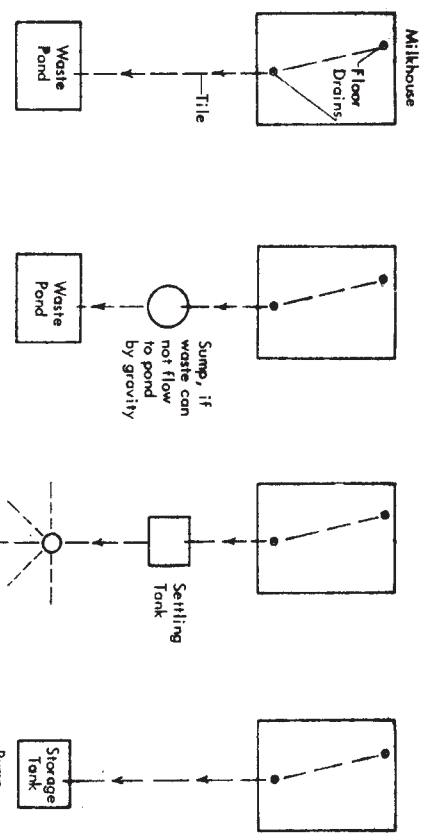
MIDWEST PLAN SERVICE
Cooperative Extension Work in
Agriculture and Home Economics
and Agricultural Experiment Stations
of North Central Region - USDA Cooperation

20 x 24 MILKHOUSE
with Bath, Office, & Utility

Page 2 of 4 Pages
MIDWEST PLAN NO. 75267



WALL SECTION 1/3



MILKHOUSE WASTE DISPOSAL 2/3

If liquid manure handling is used in the dairy barn, milkhouse wastes may go into the manure tank.

Check your waste disposal plan with local health authorities.

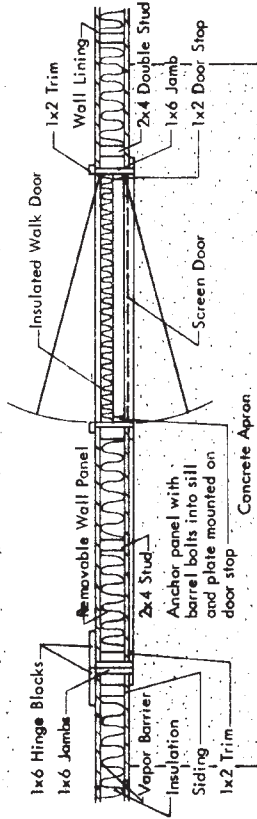
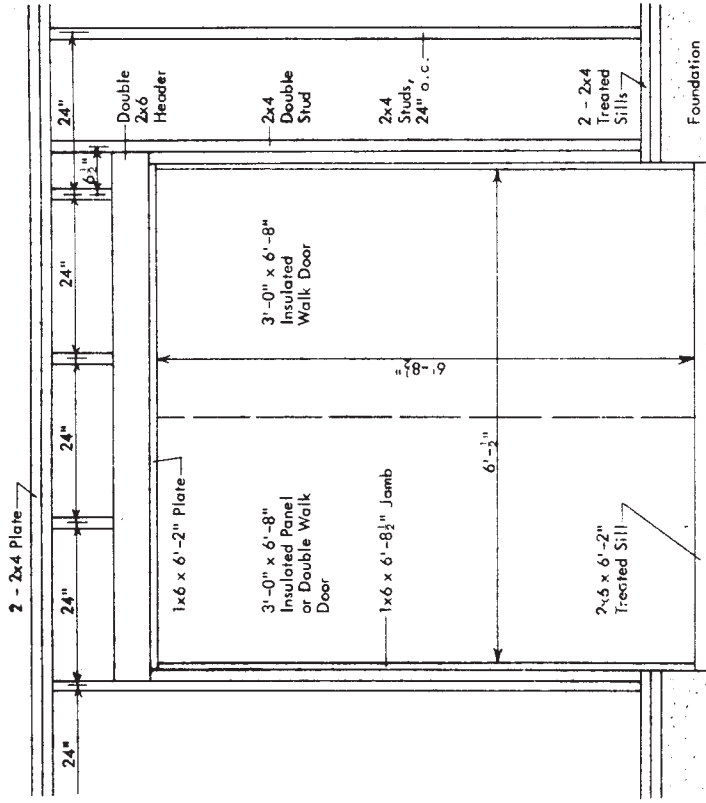
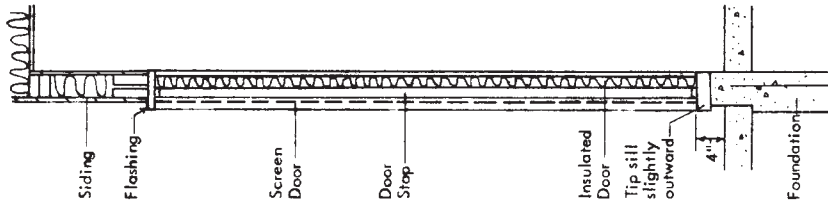
- Ceiling Alternatives:
 - 3/8" M.D.O. Plywood, painted, staggered joints, anchor with 6d nails
 - Fiberglass reinforced plastic surface laminated on 3/8" Ext. Plywood, install similar to 3/8" M.D.O. Plywood
 - 0 024 in. Aluminum
 - 28 ga Galv Steel, with baked on paint
 - 3/8" Ext. Plywood painted
- Wall Lining Alternatives:
 - 28 ga Galv Steel, with baked on paint, over 3/8" plywood
 - Structural Glazed Tile
 - Fiberglass Reinforced Polyester Resin Board
 - Fiberglass reinforced plastic surface laminated on 3/8" Ext. Plywood
 - 3/8" M.D.O. Plywood painted
 - 3/8" Ext. Plywood, painted
- Use galv. nails except with aluminum.
- Finish M.D.O. and Ext. Plywood with 2 coat acrylic-latex exterior paint system.

List does not include one endwall (existing barn wall) or material to extend roof to existing barn roof.

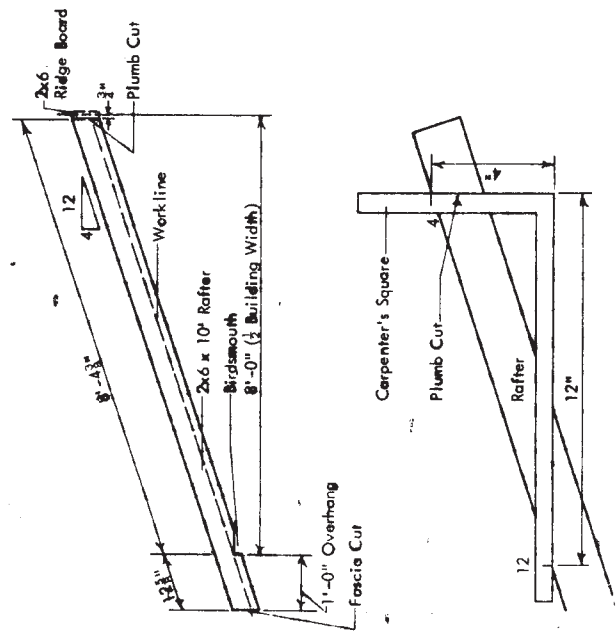
Building	Foundation	Concrete, cubic yards	Steel, Grade 36, lbs	Floor	Insulation	Roofing	Windows	Doors	Removable Panels
3.5	100	5.25	110	3.5	390	425	320	425	320
410	11								

ESTIMATING LIST

Joists	2x6 s, 16ft long	11
Rafters	2x6 s, 16ft long	360
Shingles	235 lb asphalt, sq ft	390
Siding	sq ft	425
Ceiling	sq ft	320
Wall Lining	sq ft	425
Insulation		
Ceiling	sq ft	320
Wall	sq ft	425
Floor Drains		2
Windows		2
Doors		1
Removable Panels		3



WALK DOOR AND REMOVABLE PANEL DETAIL 2/4
Seal trim and flashing with latex caulking.



RAFTER DETAIL 1/4
Anchor to plate with 2-16d toe nails.

MIDWEST PLAN SERVICE
Cooperative Extension Work in Agriculture and Home Economics and Agricultural Experiment Stations of North Central Region - USDA Cooperating
16 x 20 MILKHOUSE
Page 4 of 4 Pages
MIDWEST PLAN NO. 75208
Copyright © 1975 Midwest Plan Service