

A654-24 (December 2024)

North Dakota Dry Bean

Variety Trial Results for 2024 and Selection Guide

Ana Carcedo, Juan Osorno, Jose Figueroa Cerna (North Dakota State University, Main Station); Mike Ostlie, Kristin Simons, Miguel Paniagua Gonzalez, Greg Endres (Carrington Research Extension Center); Bryan Hanson, Lawrence Henry, Richard Duerr (Langdon Research Extension Center); Rickertsen, John (Hettinger Research Extension Center)

Between 2023 and 2024, North Dakota’s dry bean production saw some significant changes. While yields were relatively stable the last few years (from 1,700 pounds per acre in 2023 to 1,650 pounds per acre in 2024), the state experienced a substantial increase in planted acreage. Acreage expanded from 530,000 acres in 2023 to 730,000 acres in 2024 — a 200,000-acre increase. This increase in acreage resulted in a higher overall production for 2024 with total production estimated at 1,171,500 hundredweight (CWT) — an increase from 893,900 CWT in 2023. Overall, the increase in planted acres points to optimism for dry bean growers in the state.

When evaluating varieties from trials, pay special attention to yield results closest to your production area. It is also advisable to consider yield averages over several years rather than relying on data from just one year. Additionally, other agronomic characteristics — such as maturity, lodging scores and diseases scores — should be taken into account when available.

Research specialists and technicians contributed to the fieldwork and data compilation. Secretaries contributed in entering data into the respective sections of this document. We greatly appreciate the assistance provided by everyone involved.

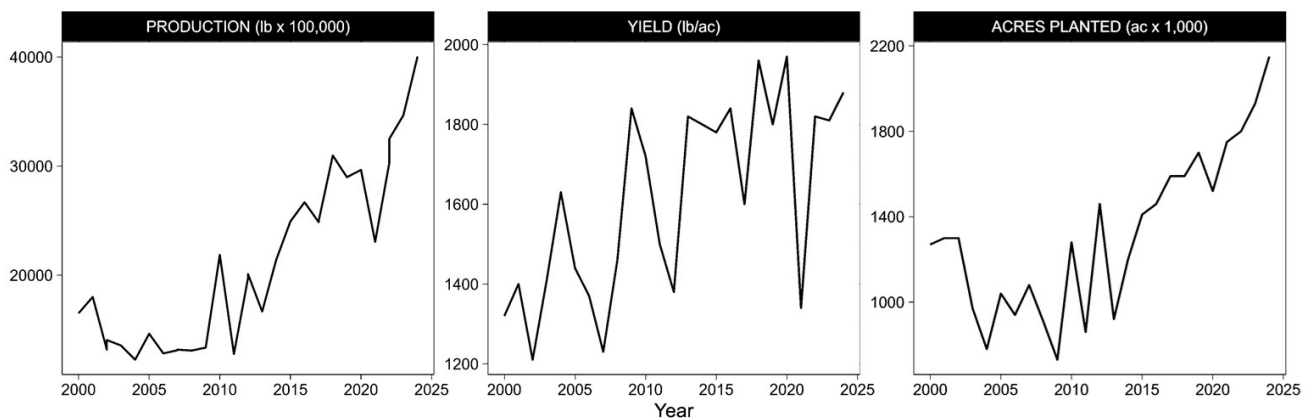


Figure 1. Dry Bean Production, Yield and Acres Planted North Dakota 2019-2024. Data from USDA-NASS.

List of Tables

- Table 1. Black Beans Variety trial - Hatton, ND.
Table 2. Black Beans Variety trial - Forest River, ND.
Table 3. Black Beans Variety Trial - Oakes, ND.
Table 4. Miscellaneous Beans Variety trial - Oakes, ND.
Table 5. Miscellaneous Beans Variety trial - Hatton, ND.
Table 6. Miscellaneous Beans Variety trial - Forest River, ND.
Table 7. Miscellaneous Beans Variety trial - Staples, MN.
Table 8. Miscellaneous Beans Variety trial - Langdon, ND.
Table 9. Miscellaneous Beans Variety trial - Hettinger, ND.
Table 10. Miscellaneous Beans Variety trial - Carrington, ND I.
Table 11. Miscellaneous Beans Variety trial - Carrington, ND II.
Table 12. Navy Beans Variety trial - Hatton, ND.
Table 13. Navy Beans Variety trial - Forest River, ND.
Table 14. Navy Beans Variety trial - Oakes, ND.
Table 15. Pinto Beans Variety trial - Oakes, ND.
Table 16. Pinto Beans Variety trial - Hatton, ND.
Table 17. Pinto Beans Variety trial - Forest River, ND.
Table 18. Slow-Darkening Pinto Beans Variety trial - Hatton, ND
Table 19. Slow-Darkening Pinto Beans Variety trial - Forest River, ND.
Table 20. Kidney Beans Variety trial - Staples, MN.
Table 21. Kidney Beans Variety trial - Perham, MN.
Table 22. Variety Sources

About This Publication

Variety trial data from all NDSU Research Extension Centers for all crops can be found at www.ag.ndsu.edu/varietytrials and the variety selection tool at <https://vt.ag.ndsu.edu/>.

The agronomic data presented in this publication are from replicated research plots using experimental designs that enable the use of statistical analysis. The least significant difference numbers beneath the columns in tables are derived from the statistical analyses and only apply to the numbers in the column in which they appear. If the difference between two varieties exceeds the LSD value, it means that with 95% or 90% probability (LSD of 0.05 or 0.10), the higher-yielding variety has a significant yield advantage. If the difference between two varieties is less than the LSD value, then the variety yields are considered similar. The abbreviation NS is used to indicate no significant difference for that trait among any of the varieties.

The coefficient of variation is a measure of variability in the trial and is expressed as a percentage. Large CVs mean a large amount of variation that could not be attributed to differences in the varieties. In the tables, the mean indicates the average of the observations in the column. Only compare values within the table and look for trends for the desired trait among different experimental sites and years.

Presentation of data for the varieties tested does not imply approval or endorsement by the authors or agencies conducting the tests. NDSU approves the reproduction of any table in this publication only if no portion is deleted, appropriate footnotes are given, the order of the data is not rearranged and NDSU is credited for the data.

Table 1. Black Beans Variety trial - Hatton, ND.

Black Beans						Hatton, ND
Variety / Line	Days to Flower	Days to Maturity	Plant Height	CBB ¹	100 Seed Weight	Seed Yield
	(days)*	(days)*	(inch)	(1-9)	(g)	(lb/a)
13505	49	90	24	5	20.3	2400
22B042	47	88	22	7	21.9	2063
22B127	48	89	22	6	20.6	2155
B18094173	47	89	20	7	21.3	2082
B5054313	47	91	22	6	20.9	2304
B7071259	48	88	22	6	21.4	1892
B7072252	48	91	22	6	20.6	2393
B7072269	48	90	20	7	20.6	2123
BLACK_PEARL	48	92	21	6	22.2	2097
BLACK_TAILS	49	91	22	6	20.3	2082
BLACKBEARD	50	92	25	6	22.9	2358
BUTTE	48	88	20	6	20.1	2077
ECLIPSE	48	88	23	5	21.6	2132
KONA	48	93	21	5	23.2	2328
ND_TWILIGHT	48	87	20	5	20.6	1681
NIMBUS	49	94	25	6	23.2	2439
SLATE	50	95	23	6	21.6	2155
SPECTRE	48	94	23	7	22.6	2090
ZORRO	47	89	23	7	21.2	2213
Mean	48	90	22	6	21.4	2161
CV %	2.7	2.1	7.0	15.6	4.6	16.3
LSD 0.05	1.8	2.7	2.2	1.3	1.4	504
LSD 0.10	1.5	2.2	1.8	1.1	1.2	421

*Days after planting

¹ Common bacterial blight

Common bacterial blight score ranges from 1 to 9: 1-3 resistant; 4-6 tolerant; 7-9 susceptible
Planted: June 6. Harvested: September 14. Previous crop: Sugarbeet.

Table 2. Black Beans Variety trial - Forest River, ND.

Black Beans					Forest River, ND	
Variety / Line	Days to Flower (days)*	Days to Maturity (days)*	Plant Height (inch)	CBB ¹ (1-9)	100 Seed Weight (g)	Seed Yield (lb/a)
13505	52	98	19	5	20.6	1691
22B042	51	96	17	6	22.1	1696
22B127	53	97	17	5	21.7	1524
B18094173	51	96	18	4	22.9	1648
B5054313	53	98	19	4	21.2	1544
B7071259	53	97	18	4	21.5	1704
B7072252	50	96	18	4	22.3	1641
B7072269	52	95	16	5	20.5	1378
BLACK_PEARL	50	98	17	4	23.0	1944
BLACK_TAILS	51	98	19	5	22.5	1903
BLACKBEARD	53	97	23	4	23.3	2097
BUTTE	52	99	16	4	23.0	1633
ECLIPSE	54	96	18	4	20.7	1819
KONA	52	97	17	4	23.0	1783
ND_TWILIGHT	49	95	19	3	21.4	1652
NIMBUS	53	100	19	4	23.7	1875
SLATE	54	98	19	5	21.2	1752
SPECTRE	54	100	20	4	21.7	1634
ZORRO	51	98	17	5	22.8	1637
Mean	52	97	18	4	22.0	1713
CV %	3.1	1.3	7.6	26.0	5.0	13.3
LSD 0.05	2.2	1.7	2.0	1.6	1.6	324
LSD 0.10	1.9	1.4	1.6	1.3	1.3	271

*Days after planting

¹ Common bacterial blight

Common bacterial blight score ranges from 1 to 9: 1-3 resistant; 4-6 tolerant; 7-9 susceptible

Planted: June 1. Harvested: September 12. Previous crop: Corn.

Table 3. Black Beans Variety Trial - Oakes, ND.

Black Beans - Irrigated							Dickey County, Oakes, ND		
Variety / Line	Market Class	Days to Maturity (days)*	Moisture (%)	Seeds per Pound (seeds/lb)	100 Seed Weight (g)	Test Weight (lb/bu)	----- Seed Yield -----		
							2024	2-yr. Avg. (lb/a)	3-yr. Avg.
Black Tails	Black	89	12.8	2210	20.5	62.9	2364	3211	3281
Eclipse	Black	88	13.0	2051	22.1	62.3	2789	3351	3484
ND Twilight	Black	91	14.1	1808	25.1	62.9	3156	3639	3829
Mean		90	13.6	2001	23	62.1	2977	--	--
CV %		2.0	2.7	3.7	3.8	0.7	6.0	--	--
LSD 0.10		1.8	0.4	72	0.8	0.4	173	--	--
LSD 0.05		2.4	0.5	95	1.1	0.6	230	--	--

* Days after planting

Planted: May 30. Harvested: September 10. Previous crop: Soybean

Data includes only released varieties. Experimental lines are not included. Statistics reflect the entire trial.

Table 4. Miscellaneous Beans Variety trial - Oakes, ND.

Miscellaneous Beans - Irrigated							Dickey County, Oakes, ND		
Variety / Line	Market Class	Days to PM (days)*	Moisture (%)	Seeds per Pound (seeds/lb)	100 Seed Weight (g)	Test Weight (lb/bu)	----- Seed Yield -----		
							2024	2-yr. Avg. (lb/a)	3-yr. Avg.
Merlot	Small Red	90	14.7	1133	40.0	59.6	2742	3498	3664
ND Pegasus	Great Northern	90	14.5	1230	36.9	60.7	2582	3258	3915
ND Rosalind	Pink	90	15.3	1246	36.4	60.6	3118	4160	4160
Powderhorn	Great Northern	83	12.9	1362	33.4	59.0	1676	2622	2622
Rosseta	Pink	77	14.3	1362	33.3	59.3	2020	--	--
Viper	Small Red	88	14.7	1615	28.1	60.9	2484	--	--
Mean		87	14.4	1306	35.2	60.1	2489	--	--
CV %		5.6	2.5	3.5	3.2	0.8	5.6	--	--
LSD 0.10		4.5	0.3	42	1.1	0.4	130	--	--
LSD 0.05		5.9	0.4	55	1.4	0.6	169	--	--

Planted: May 30. Harvested: September 10. Previous crop: Soybean

Data includes only released varieties. Experimental lines are not included. Statistics reflect the entire trial.

Table 5. Miscellaneous Beans Variety trial - Hatton, ND.

Miscellaneous Beans						Hatton, ND	
Variety / Line	Market class	Days to Flower (days)*	Days to Maturity (days)*	Plant Height (inch)	CBB ¹ (1-9)	100 Seed Weight (g)	Seed Yield (lb/a)
ANDROMEDA	Great Northern	42	84	13	8	37.7	1577
COYNE	Great Northern	44	85	16	7	35.3	2031
EIGER	Great Northern	47	91	21	5	30.9	2249
LYRA	Great Northern	43	84	17	7	36.7	1734
ND_PEGASUS	Great Northern	46	89	19	4	38.5	2246
NE1-17-36	Great Northern	44	87	18	6	36.4	1571
PANHANDLE_PRIDE	Great Northern	42	85	16	6	34.9	2223
POWDERHORN	Great Northern	42	82	18	7	32.7	1645
VIRGO	Great Northern	44	87	17	5	38.0	2162
WHITE_PEARL	Great Northern	45	86	17	6	35.8	1721
CORAL	Pink	49	93	20	4	36.2	2232
ND_ROSALIND	Pink	50	92	19	3	32.9	2623
MERLOT	Small Red	45	90	17	8	36.7	2107
USDA-LAVA	Small Red	44	86	18	6	31.8	2101
Mean		45	87	18	6	35.3	2016
CV %		3.2	1.8	7.0	16.3	5.7	11.9
LSD 0.05		2.0	2.2	1.8	1.2	2.9	363
LSD 0.10		1.7	1.8	1.5	1.0	2.4	304

*Days after planting

¹ Common bacterial blight

Common bacterial blight score ranges from 1 to 9: 1-3 resistant; 4-6 tolerant; 7-9 susceptible

Planted: June 6. Harvested: September 14. Previous crop: Sugarbeet.

Table 6. Miscellaneous Beans Variety trial - Forest River, ND.

Miscellaneous Beans						Forest River, ND	
Variety / Line	Market class	Days to Flower (days)*	Days to Maturity (days)*	Plant Height (inch)	CBB ¹ (1-9)	100 Seed Weight (g)	Seed Yield (lb/a)
COYNE	Great Northern	48	94	16	4	37.7	1761
EIGER	Great Northern	52	97	18	3	32.9	1598
ND_PEGASUS	Great Northern	51	98	21	4	42.2	2160
NE1-17-36	Great Northern	51	97	17	4	41.5	1527
PANHANDLE_PRIDE	Great Northern	48	97	17	5	36.8	1505
POWDERHORN	Great Northern	50	96	18	6	37.5	1793
WHITE_PEARL	Great Northern	49	96	17	5	39.7	1615
CORAL	Pink	50	98	19	5	38.8	1556
ND_ROSALIND	Pink	52	98	20	4	34.8	1908
MERLOT	Small Red	47	97	19	8	37.8	1483
USDA-LAVA	Small Red	51	96	20	5	33.4	1635
Mean		50	97	18	5	37.5	1686
CV %		3.3	0.8	7.8	22.3	4.5	13.2
LSD 0.05		2.4	1.1	2.1	1.5	2.4	330
LSD 0.10		2.0	0.9	1.7	1.2	2.0	276

*Days after planting

¹ Common bacterial blight

Common bacterial blight score ranges from 1 to 9: 1-3 resistant; 4-6 tolerant; 7-9 susceptible

Planted: June 1. Harvested: September 12. Previous crop: Corn.

Table 7. Miscellaneous Beans Variety trial - Staples, MN.

Miscellaneous Beans								Staples, MN
Variety / Line	Market class	Days to Flower (days)*	Days to Maturity (days)*	Plant Height (inch)	CBB ¹ (1-9)	Root Rot (1-9)	100 Seed Weight (g)	Seed Yield (lb/a)
BLACK_TAILS	Black	49	99	16	7	5	20.1	1562
ECLIPSE	Black	52	100	16	5	3	20.2	1542
ND_TWILIGHT	Black	53	98	15	4	4	21.9	1651
EIGER	Great Northern	51	102	16	5	4	34.2	2149
ND_PEGASUS	Great Northern	49	102	16	4	2	32.4	2035
HMS_MEDALIST	Navy	50	102	16	6	2	19.8	1908
ND_POLAR	Navy	54	105	16	5	3	18.3	1253
T9905	Navy	49	103	15	6	4	22.9	1844
CORAL	Pink	51	104	17	5	5	36.8	1420
ND_ROSALIND	Pink	49	102	16	4	5	33.8	1883
COWBOY	Pinto	51	100	17	6	2	40.6	2249
LARIAT	Pinto	49	102	14	5	4	40.1	1916
MONTERREY	Pinto	50	99	17	6	2	36.6	2230
ND_FALCON	Pinto	52	100	17	4	3	36.4	1930
TORREON	Pinto	49	101	16	7	2	43.6	1906
WINDBREAKER	Pinto	50	99	12	6	2	41.7	1569
ND_PALOMINO	Slow-Dark Pinto	47	104	13	6	5	39.2	1426
ND_RODEO	Slow-Dark Pinto	49	105	15	4	4	42.5	1991
VIBRANT	Slow-Dark Pinto	49	105	16	6	4	36.3	2137
MERLOT	Small Red	50	99	14	7	3	34.1	1398
Mean		50	101	15	5	3	32.6	1800
CV %		3.3	2.4	8.1	18.8	51.6	9.1	12.7
LSD 0.05		2.3	3.5	1.8	1.4	2.4	4.1	317
LSD 0.10		1.9	2.9	1.5	1.7	2.0	3.4	265

*Days after planting

¹ Common bacterial blight

Common bacterial blight and Root Rot scores range from 1 to 9: 1-3 resistant; 4-6 tolerant; 7-9 susceptible
Planted: May 31. Harvested: September 26. Previous crop: Corn.

Table 8. Miscellaneous Beans Variety trial - Langdon, ND.

Miscellaneous Beans						Langdon, ND						
Variety / Line	Market Class	Days to Maturity (days)*	Plant Height (inch)	Lodging (1-9)	100 Seed Weight (g)	Seed Yield -----(lb/a)-----						
						2021	2022	2023	2024	2-yr Avg.	3-yr Avg.	4-yr Avg.
Black Tails	Black Turtle	116	15	1.0	21.4	2063	3463	3512	2698	3105	3224	2934
Eclipse	Black Turtle	116	15	1.4	21.6	2049	3132	2935	2726	2830	2931	2710
ND Twilight	Black Turtle	112	13	2.6	22.0	1522	2901	2458	2021	2240	2460	2226
ND Pegasus	Great Northern	117	15	3.8	38.7	2320	4098	3176	2570	2873	3281	3041
Powderhorn	Great Northern	114	15	5.1	38.7	--	--	3078	1475	2277	--	--
Blizzard	Navy	117	12	1.2	19.6	1962	3350	3210	1920	2565	2827	2611
HMS Medalist	Navy	118	13	1.4	18.0	2197	2847	3238	2268	2753	2784	2638
ND Polar	Navy	119	15	1.7	19.0	--	3172	2994	2086	2540	2751	--
T9905	Navy	120	12	3.1	22.2	1835	3326	3118	1994	2556	2813	2568
ND Rosalind	Pink	116	12	3.4	34.9	--	--	--	2245	--	--	--
Rosetta	Pink	115	14	1.9	40.5	2044	2580	3128	1448	2288	2385	2300
Cowboy	Pinto	114	14	4.4	37.4	1638	3074	3246	2283	2764	2868	2560
Diamondback	Pinto	118	13	3.4	40.9	--	--	3050	2163	2606	--	--
LaPaz	Pinto	115	12	4.1	35.9	1827	3155	3496	2351	2924	3001	2707
Lariat	Pinto	117	15	4.8	41.4	1714	3026	3416	2474	2945	2972	2658
Monterrey	Pinto	114	13	2.9	36.4	2105	3189	3254	2839	3046	3094	2847
ND Falcon	Pinto	117	14	2.8	38.8	1695	3278	2684	1957	2320	2640	2403
ND Palomino	Pinto	118	13	3.7	40.2	1585	2632	2557	2284	2420	2491	2264
ND Rodeo	Pinto	119	15	3.6	40.9	--	--	2868	2778	2823	--	--
Rattler	Pinto	110	14	2.2	38.6	--	--	3546	2417	2981	--	--
Torreón	Pinto	116	12	3.8	36.9	2165	3558	2767	2242	2504	2856	2683
Vibrant	Pinto	114	13	3.8	35.0	2114	3626	3227	2857	3042	3237	2956
Windbreaker	Pinto	113	12	4.1	39.7	1587	2490	3109	2525	2817	2708	2428
Merlot	Small Red	116	13	5.3	37.4	2036	2875	2493	1952	2222	2440	2339
Viper	Small Red	118	15	3.2	27.7	2114	3626	--	2033	--	--	--
Mean		116.0	13.5	3.1	33.0	1937	3160	3054	2225	--	--	--
CV %		1.8	12.2	--	--	9.5	8.9	7.0	12.0	--	--	--
LSD 0.10		2.8	2.3	--	--	197	336	384	552	--	--	--

* Days after planting

Planted May 30. Harvested October 8. Previous crop: Barley

Soil Type: Svea-Barnes loam

Trials were direct harvested in 2021-2024.

Data includes only released varieties. Experimental lines are not included. Statistics reflect the entire trial.

Table 9. Miscellaneous Beans Variety trial - Hettinger, ND.

Dry Bean - 2024						Hettinger, ND			
Variety / Line	Market class	Days to	Plant	100 Seed	Seed Yield			Average Yield	
		Maturity	Height	Weight	2022	2023	2024	2 yr	3 yr
		(days)*	(inch)	(g)	(lb/a)				
Cowboy	Pinto	104	18	36.5	1230	1788	1094	1441	1371
LaPaz	Pinto	107	17	35.3	965	2044	984	1514	1331
Lariat	Pinto	107	19	35.8	1177	1765	1007	1386	1317
Monterrey	Pinto	106	18	34.8	1129	2183	1132	1658	1481
ND Falcon	Pinto	108	18	32.2	1115	1979	1051	1515	1382
ND Palomino	Pinto	108	17	34.8	1072	1579	815	1197	1155
ND Rodeo	Pinto	109	15	34.0	1160	1839	1021	1430	1340
Torreón	Pinto	104	17	37.3	1250	1709	1231	1470	1397
USDA Diamondback	Pinto	108	17	34.8	--	1922	1020	1471	--
USDA Rattler	Pinto	106	15	36.1	--	2016	1179	1598	--
Vibrant	Pinto	103	18	30.4	908	2045	1098	1572	1350
Windbreaker	Pinto	103	15	36.4	560	1652	827	1240	1013
Blizzard	Navy	109	16	17.6	894	1583	656	1119	1044
HMS Medalist	Navy	110	16	16.8	868	1819	500	1159	1062
ND Polar	Navy	110	16	16.1	964	1925	546	1235	1145
T9905	Navy	111	16	16.7	1078	1720	857	1289	1219
Merlot	Red	108	17	32.9	782	1292	826	1059	966
Viper	Red	110	17	22.1	--	--	1102	--	--
ND Rosalind	Pink	108	12	26.9	--	2132	1017	1575	--
Rosetta	Pink	107	16	29.7	736	1599	1211	1405	1182
Black Tails	Black	109	15	18.4	946	1826	857	1341	1210
Eclipse	Black	106	15	21.7	983	2007	853	1430	1281
ND Twilight	Black	108	15	21.2	1018	1956	683	1319	1219
ND Pegasus	Great Northern	109	18	33.4	1404	2049	1243	1646	1565
Powderhorn	Great Northern	104	16	33.3	--	1778	1122	1450	--
Mean		107	16	28.9	1016	1804	929	1395	1245
CV %		--	9.7	5.0	12.8	16.4	13.7	--	--
LSD 0.05		--	1.9	1.7	178	348	149	--	--
LSD 0.10		--	1.4	1.3	138	270	116	--	--

¹ Days after planting.

Planted: May 28. Harvested: September 25. Previous crop: Spring Wheat

Table 10. Miscellaneous Beans Variety trial - Carrington, ND I.

Dry Bean - Irrigated											Carrington	
Variety	Market Class	Days to Maturity (days)*	Plant Height (inch)	Lodging ¹ (1-9)	Direct Harvest ² (%)	Protein (%)	100 Seed Weight (g)	Seeds per Pound (#/lb)	Test Weight (lb/bu)	--Seed Yield--		
										2024	3-yr. Avg.	
Bronco	SD-Pinto	101	26	4	90	20.9	41.5	1094	63.7	2414	--	
Charro	Pinto	99	27	3	95	20.3	34.0	1336	61.5	2825	--	
Cowboy	Pinto	95	27	2	94	19.8	34.1	1332	61.4	2351	2780	
La Paz	Pinto	96	27	2	92	19.0	31.1	1458	62.1	2074	2610	
Lariat	Pinto	100	26	4	86	20.3	37.7	1203	61.1	2723	3180	
Monterrey	Pinto	95	27	2	95	19.3	31.5	1439	62.3	2445	2870	
Mystic	SD-Pinto	98	28	2	95	20.4	36.6	1239	64.4	2776	--	
ND Falcon	Pinto	101	27	4	93	20.5	36.2	1256	58.3	1959	2657	
ND Palomino	SD-Pinto	101	26	4	91	20.0	33.9	1356	58.9	2067	2555	
ND Pegasus	Great Northern	102	28	5	87	21.1	33.5	1353	62.4	2602	3374	
ND Rodeo	SD-Pinto	101	28	4	88	19.9	38.5	1179	62.3	2175	3004	
ND Rosalind	Pink	99	26	4	92	19.0	32.2	1409	63.8	2520	3214	
Powderhorn	Great Northern	95	25	2	92	19.3	32.1	1415	56.5	1699	--	
Rosetta	Pink	87	22	8	60	20.1	30	1507	62.1	896	1678	
Torreon	Pinto	95	27	2	96	19.5	34.9	1301	61.5	2311	2594	
USDA Diamondback	SD-Pinto	100	27	3	95	19.9	33.8	1344	61.9	2634	--	
USDA Rattler	Pinto	100	26	3	92	19.3	35.0	1297	60.9	2112	--	
Vibrant	SD-Pinto	95	27	2	94	19.4	30.9	1468	59.1	2291	2382	
Windbreaker	Pinto	95	25	4	91	19.6	35.5	1280	57.7	2372	2591	
Mean		98	26	3	90	19.9	34.6	1322	61.2	2334	--	
CV %		1	5	20	4	2.1	3.4	4	1.0	11	--	
LSD 0.10		1	2	1	4	0.5	1.4	59	0.7	297	--	

Planting Date = May 31; Harvest Date = October 3; Previous Crop = Flax

¹ Lodging is scored on a scale of 1-9; 1 = no lodging, 9 = plants lying flat on the ground

² Direct harvest is a relative score to estimate the % of beans that would be successfully harvested in a direct harvest system

Data includes only released varieties. Experimental lines are not included. Statistics reflect the entire trial.

* Days after planting

Table 11. Miscellaneous Beans Variety trial - Carrington, ND II.

Dry Bean - Irrigated											Carrington	
Variety	Market Class	Days to Maturity (days)*	Plant Height (inch)	Lodging ¹ (1-9)	Direct Harvest ² (%)	Protein (%)	100 Seed Weight (g)	Seeds per Pound (#/lb)	Test Weight (lb/bu)	-- Seed Yield --		
										2024	3-yr. Avg.	
Black Tails	Black	92	26	2	96	20.2	17.9	2539	61.5	1741	2523	
Blizzard	Navy	100	25	1	95	19.9	15.0	3031	59.6	1905	2832	
Eclipse	Black	96	25	1	96	19.3	18.1	2509	60.1	2093	2782	
HMS Medalist	Navy	100	25	1	96	19.7	14.6	3107	59.7	2159	2961	
Merlot	Small Red	95	25	5	78	19.5	32.8	1385	59.3	2586	2952	
ND Polar	Navy	103	26	3	93	20.6	17.4	2615	60.7	2518	2778	
ND Twilight	Black	95	25	2	95	19.0	18.4	2461	61.1	2222	2810	
T9905	Navy	100	24	2	96	20.5	18.0	2517	60.0	1844	2171	
Viper	Small Red	96	26	3	95	20.1	24.9	1825	60.5	2322	--	
Mean		97	25	2	94	20.2	20.7	2350	60.3	2211	--	
CV %		1	5	30	3	2.3	3.0	2	3.0	10	--	
LSD 0.10		2	2	1	4	0.6	0.8	64	2.2	277	--	

Planted May 31; Harvested October 3; Previous Crop = Flax

¹ Lodging is scored on a scale of 1-9; 1 = no lodging, 9 = plants lying flat on the ground

² Direct harvest is a relative score to estimate the % of beans that would be successfully harvested in a direct harvest system

* Days after planting

Table 12. Navy Beans Variety trial - Hatton, ND.

Navy Beans						Hatton, ND
Variety / Line	Days to Flower	Days to Maturity	Plant Height	CBB ¹	100 Seed Weight	Seed Yield
	(days)*	(days)*	(inch)	(1-9)	(g)	(lb/a)
ARMADA	48	93	19	6	22.8	2100
AUSABLE	48	89	18	6	23.4	2025
BLIZZARD	48	93	19	7	21.5	2253
EX1803-N	46	84	17	7	18.9	1498
EX1804-N	46	86	18	6	19.3	1819
EX2111-N	48	94	19	6	19.7	2036
EX712317	48	92	20	6	21.9	2432
HMS_MEDALIST	46	93	19	7	20.8	2174
HMS_VICTORY	46	93	20	6	21.9	2287
LIBERTY	48	93	19	7	22.6	1997
ND_POLAR	51	94	21	5	18.9	2154
OAC_CHARM	45	93	18	7	21.8	2207
SV1893GH	49	95	19	6	23.6	2036
T9905	47	93	19	6	22.0	2129
VALIANT	46	89	19	7	20.6	2091
Mean	47	91	19	6	21.3	2083
CV %	2.8	1.2	6.4	10.2	3.2	10.4
LSD 0.05	1.9	1.6	1.7	0.9	1.0	314
LSD 0.10	1.6	1.3	1.5	0.7	0.8	262

*Days after planting

¹ Common bacterial blight

Common bacterial blight score ranges from 1 to 9: 1-3 resistant; 4-6 tolerant; 7-9 susceptible

Planted: June 6. Harvested: September 14. Previous crop: Sugarbeet.

Table 13. Navy Beans Variety trial - Forest River, ND.

Navy Beans						Forest River, ND
Variety / Line	Days to Flower	Days to Maturity	Plant Height	CBB ¹	100 Seed Weight	Seed Yield
	(days)*	(days)*	(inch)	(1-9)	(g)	(lb/a)
ARMADA	52	98	19	5	22.8	1816
AUSABLE	52	97	18	7	21.6	1267
BLIZZARD	52	96	19	7	20.5	1767
EX1803-N	49	94	17	6	20.6	1585
EX1804-N	49	98	18	5	19.4	1105
EX2111-N	51	98	18	6	19.4	1486
EX712317	51	98	18	6	22.5	1448
HMS_MEDALIST	50	98	19	7	19.7	1634
HMS_VICTORY	50	98	21	6	22.0	1829
LIBERTY	52	99	18	7	21.5	1516
ND_POLAR	53	99	21	4	19.7	1624
OAC_CHARM	44	100	20	4	24.3	1672
SV1893GH	52	100	19	6	22.9	1565
T9905	51	98	19	6	23.1	1684
VALIANT	49	97	17	6	21.0	1689
Mean	50	98	19	6	21.4	1579
CV %	3.8	1.0	6.2	20.0	4.5	14.2
LSD 0.05	2.7	1.4	1.7	1.6	1.3	330
LSD 0.10	2.3	1.1	1.4	1.4	1.1	275

*Days after planting

¹ Common bacterial blight

Common bacterial blight score ranges from 1 to 9: 1-3 resistant; 4-6 tolerant; 7-9 susceptible

Planted: June 1. Harvested: September 12. Previous crop: Corn.

Table 14. Navy Beans Variety trial - Oakes, ND.

Navy Beans- Irrigated							Dickey County, Oakes, ND		
Variety / Line	Market Class	Days to Maturity (days)*	Moisture (%)	Seeds per Pound (seeds/lb)	Seed Weight (g/100)	100 Seed Weight (g)	----- Seed Yield -----		
							2024	2-yr. Avg.	3-yr. Avg.
Blizzard	Navy	91	13.7	2289	19.8	63.2	2389	3267	3509
HMS Medalist	Navy	91	13.6	2518	18.1	63.3	2596	3317	3482
ND Polar	Navy	92	14.1	2357	19.3	62.5	1819	2855	3275
T9905	Navy	92	14.2	2058	22.1	62.9	2531	3430	3618
Mean		92	13.9	2305	19.8	63.0	2334	--	--
C.V. (%)		0.7	2.7	3.7	3.3	0.5	5.7	--	--
LSD 0.10		0.6	0.4	84	0.6	0.3	130	--	--
LSD 0.05		0.8	0.5	111	0.9	0.4	172	--	--

* Days after planting

Planted: May 30. Harvested: September 10. Previous crop: Soybean

Table 15. Pinto Beans Variety trial - Oakes, ND.

Pinto Beans- Irrigated							Dickey County, Oakes, ND		
Variety / Line	Market Class	Days to PM (days)*	Moisture (%)	Seeds per Pound (seeds/lb)	Seed Weight (g/100)	100 Seed Weight (g)	----- Seed Yield -----		
							2024	2-yr. Avg.	3-yr. Avg.
Cowboy	Pinto	84	14.6	1197	37.9	59.8	2244	3225	3776
La Paz	Pinto	88	14.6	1252	36.3	59.8	2034	3030	3675
Lariat	Pinto	88	14.9	1193	38.1	59.3	2508	3266	3515
Monterrey	Pinto	87	14.6	1296	35.1	59.8	2327	3153	3703
ND Falcon	Pinto	92	14.9	1228	37.0	57.2	2131	2921	3066
ND Palomino	SD-Pinto	90	15.7	1189	38.2	58.6	2769	3391	3859
ND Rodeo	SD-Pinto	89	15.4	1109	40.9	61.4	2933	3666	3666
Torreon	Pinto	86	15.1	1149	39.5	60.0	2256	3120	3553
USDA Diamondback	SD-Pinto	89	15.5	1283	35.4	60.2	1950	3051	3051
USDA Rattler	Pinto	89	14.6	1186	38.3	58.8	2451	3301	3301
Vibrant	Pinto	84	13.3	1296	35.0	60.9	2184	2991	3429
Windbreaker	Pinto	82	14.0	1226	37.0	58.7	2367	3281	3753
Mean		88	14.9	1198	38	59.3	2363	--	--
CV %		3.4	2.6	3.5	3.4	1.0	9.9	--	--
LSD 0.10		2.7	0.4	39	1.2	0.6	215	--	--
LSD 0.05		3.5	0.5	50	1.6	0.7	278	--	--

* Days after planting

Planted: May 30. Harvested: September 10. Previous crop: Soybean

SD-Pinto = slow darkening pinto

Data includes only released varieties. Experimental lines are not included. Statistics reflect the entire trial.

Table 16. Pinto Beans Variety trial - Hatton, ND.

Pinto Beans						Hatton, ND
Variety / Line	Days to Flower (days)*	Days to Maturity (days)*	Plant Height (inch)	CBB ¹ (1-9)	100 Seed Weight (g)	Seed Yield (lb/a)
CANCUN	49	94	25	5	45.1	1841
CHARRO	50	95	25	4	40.8	2046
COWBOY	46	88	24	6	37.5	2212
LA_PAZ	48	92	24	5	36.4	1760
LARIAT	48	94	19	4	42.1	1859
MONTERREY	48	92	22	5	36.1	2186
ND_FALCON	50	94	26	4	41.1	2061
NE2-23-21	43	93	20	6	39.2	1709
NE2-23-35	44	94	20	5	41.0	1748
NE2-23-40	44	92	20	6	39.8	1777
NE2-23-53	47	93	19	5	39.3	1791
OTHELLO	40	91	14	7	36.2	1232
RUSTLER	42	90	18	6	36.6	1932
SANTA_MARIA	45	87	23	6	39.9	1618
SV6139GR	43	90	20	6	34.4	1624
TORREON	46	88	23	6	39.4	1827
TVS21-4-3	44	90	22	6	44.0	1646
TVS21-4-6	44	87	21	6	38.4	2128
TVS21-6-10	48	89	25	7	40.3	1804
TVS21-6-16	47	91	23	6	43.8	2113
USDA-CODY	49	92	22	5	36.0	1686
USDA-RATTLER	48	90	23	6	36.2	1832
WINDBREAKER	43	89	17	5	39.3	1717
WMM-1022	41	94	20	7	42.9	1347
WMM-975P	41	87	21	7	33.9	1625
Mean	45	91	21	5	39.2	1805
CV %	3.1	1.5	9.2	13.7	6.9	13.2
LSD 0.05	2.0	1.9	2.8	1.0	3.7	321
LSD 0.10	1.7	1.6	2.3	0.8	3.1	269

*Days after planting

¹ Common bacterial blight

Common bacterial blight score ranges from 1 to 9: 1-3 resistant; 4-6 tolerant; 7-9 susceptible

Planted: June 6. Harvested: September 14. Previous crop: Sugarbeet.

Table 17. Pinto Beans Variety trial - Forest River, ND.

Pinto Beans				Fores River, ND		
Variety / Line	Days to Flower	Days to Maturity	Plant Height	CBB ¹	100 Seed Weight	Seed Yield
	(days)*	(days)*	(inch)	(1-9)	(g)	(lb/a)
CANCUN	51	95	21	4	44.7	1525
CHARRO	53	95	20	4	40.8	1835
COWBOY	51	92	18	6	39.6	1771
LA_PAZ	51	93	19	4	36.4	1903
LARIAT	49	92	20	4	41.5	1711
MONTERREY	52	92	19	4	36.9	1827
ND_FALCON	52	95	22	3	38.1	1712
RUSTLER	47	91	16	6	37.7	1640
SANTA_MARIA	49	90	19	5	39.5	1749
SV6139GR	47	92	16	6	38.9	1694
TORREON	51	91	21	5	38.7	1806
TVS21-4-3	45	90	18	6	42.7	1866
TVS21-4-6	48	90	18	6	39.3	1760
TVS21-6-10	48	90	20	6	42.6	1652
TVS21-6-16	48	92	20	6	41.8	1623
USDA-CODY	48	92	17	6	35.3	1430
USDA-RATTLER	50	96	18	4	41.5	1976
WINDBREAKER	47	92	16	5	41.3	1477
WMM-1022	41	91	16	9	38.2	598
WMM-975P	42	91	16	6	36.7	1453
Mean	48	92	19	5	39.6	1650
CV %	4.0	1.3	7.9	25.3	4.2	16.8
LSD 0.05	2.7	1.7	2.0	1.8	2.3	365
LSD 0.10	2.2	1.4	1.7	1.5	1.9	306

*Days after planting

¹ Common bacterial blight

Common bacterial blight score ranges from 1 to 9: 1-3 resistant; 4-6 tolerant; 7-9 susceptible
Planted: June 1. Harvested: September 12. Previous crop: Corn.

Table 18. Slow-Darkening Pinto Beans Variety trial - Hatton, ND

Slow-Darkening Pinto Beans						Hatton, ND
Variety / Line	Days to Flower	Days to Maturity	Plant Height	CBB ¹	100 Seed Weight	Seed Yield
	(days)*	(days)*	(inch)	(1-9)	(g)	(lb/a)
BRONCO	42	93	16	5	44.6	1918
GLEAM	45	87	20	5	35.6	2037
MYSTIC	45	93	20	5	38.9	2115
ND_PALOMINO	42	94	18	6	39.2	1943
ND_RODEO	48	94	19	3	41.9	2460
SHINE	48	93	18	5	36.0	1834
TVS21-3-2	45	91	18	6	39.5	2275
TVS21-5-5	47	90	18	5	34.9	1964
TVS21-7-2	49	92	21	5	38.4	2196
TVS21-7-8	48	92	21	5	40.9	2339
USDA-DIAMONDBACK	46	94	19	6	38.9	2281
VIBRANT	44	85	19	5	34.9	2055
WILDCAT	46	95	16	6	44.3	1912
WMM-556	47	94	19	3	34.8	2430
WMM-750	48	94	17	3	35.3	2616
WMM-820	41	91	17	6	38.5	2033
Mean	45	92	19	5	38.5	2151
CV %	2.4	1.6	7.6	20.0	4.7	13.0
LSD 0.05	1.5	2.1	2.0	1.3	2.6	395
LSD 0.10	1.3	1.7	1.7	1.1	2.2	331

*Days after planting

¹ Common bacterial blight

Common bacterial blight score ranges from 1 to 9: 1-3 resistant; 4-6 tolerant; 7-9 susceptible

Planted: June 6. Harvested: September 14. Previous crop: Sugarbeet.

Table 19. Slow-Darkening Pinto Beans Variety trial - Forest River, ND.

Slow-Darkening Pinto Beans					Forest River, ND	
Variety / Line	Days to Flower	Days to Maturity	Plant Height	CBB ¹	100 Seed Weight	Seed Yield
	(days)*	(days)*	(inch)	(1-9)	(g)	(lb/a)
BRONCO	47	97	19	4	44.3	1364
GLEAM	49	96	17	4	40.0	1485
MYSTIC	50	96	20	6	40.3	1643
ND_PALOMINO	44	98	19	6	42.0	1510
ND_RODEO	51	98	18	3	43.7	1507
SHINE	50	97	19	5	39.4	1706
TVS21-3-2	48	96	19	4	42.6	1644
TVS21-5-5	51	97	19	6	38.3	1728
TVS21-7-2	51	96	19	5	40.9	1617
TVS21-7-8	52	97	20	6	40.7	1592
USDA-DIAMONDBACK	50	97	19	6	41.2	1478
VIBRANT	48	96	18	5	36.6	1816
WILDCAT	51	99	15	4	49.1	1787
WMM-556	52	99	20	2	35.7	1804
WMM-750	53	99	19	1	38.7	1832
WMM-820	44	97	15	6	39.3	1271
Mean	49	97	18	4	40.8	1612
CV %	3.3	1.1	9.1	25.7	6.0	16.2
LSD 0.05	2.3	1.5	2.4	1.6	3.5	364
LSD 0.10	1.9	1.3	2.0	1.3	2.9	299

*Days after planting

¹ Common bacterial blight

Common bacterial blight score ranges from 1 to 9: 1-3 resistant; 4-6 tolerant; 7-9 susceptible

Planted: June 1. Harvested: September 12. Previous crop: Corn.

Table 20. Kidney Beans Variety trial - Staples, MN.

Kidney Beans		Staples, MN						
Variety / Line	Market class	Days to Flower (days)*	Days to Maturity (days)*	Plant Height (inch)	CBB ¹ (1-9)	Root Rot (1-9)	100 Seed Weight (g)	Seed Yield (lb/a)
OAC_FIRESTRIPE	Cranberry	47	96	11	8	3	49.7	1705
OAC_NAVABI	Cranberry	43	93	11	9	2	45.8	1455
CINDER	Dark Red Kidney	45	104	13	7	4	45.6	1506
MONTCALM	Dark Red Kidney	45	105	13	7	6	45.5	1562
ND_REDBARN	Dark Red Kidney	47	102	12	7	4	46.3	1261
REDHAWK	Dark Red Kidney	43	94	12	8	4	40.9	1131
CLOUSEAU	Light Red Kidney	44	94	11	8	5	50.9	1208
PINK_PANTHER	Light Red Kidney	42	98	12	8	4	52.8	1379
ROSIE	Light Red Kidney	47	110	15	5	6	46.2	1742
SPITFIRE	Light Red Kidney	47	102	14	7	3	53.7	1443
BELUGA	White Kidney	46	101	13	7	3	42.9	1239
ND_WHITETAIL	White Kidney	45	101	13	6	4	44.4	1461
SNOWSHOE	White Kidney	45	104	14	7	4	51.2	1758
Mean		45	100	12	7	4	47.4	1450
CV %		4.5	3.1	3.9	11.0	40.4	6.3	21.8
LSD 0.05		2.9	4.4	1.7	1.1	2.3	4.1	432
LSD 0.10		2.4	3.7	3.7	0.9	1.9	3.4	361

*Days after planting

¹ Common bacterial blight

Common bacterial blight and Root Rot scores range from 1 to 9: 1-3 resistant; 4-6 tolerant; 7-9 susceptible
Planted: May 31. Harvested: September 26. Previous crop: Corn.

Yield data from this site was not collected due to unintended interference by deer.

Table 21. Kidney Beans Variety trial - Perham, MN.

Kidney Beans		Perham, MN	
Variety / Line	Market class	Days to Flower (days)*	Root Rot (1-9)
OAC_FIRESTRIPE	Cranberry	39	4
OAC_NAVABI	Cranberry	38	4
161156	Dark Red Kidney	42	6
161165	Dark Red Kidney	38	6
181017	Dark Red Kidney	40	4
181021	Dark Red Kidney	40	5
CHAPARRAL	Dark Red Kidney	45	4
CINDER	Dark Red Kidney	44	5
EPIC	Dark Red Kidney	40	4
MONTCALM	Dark Red Kidney	39	4
ND_REDBARN	Dark Red Kidney	40	4
RAMPART	Dark Red Kidney	40	3
REDHAWK	Dark Red Kidney	40	5
SEATTLE	Dark Red Kidney	40	4
SPIRE	Dark Red Kidney	42	5
TALON	Dark Red Kidney	45	4
15916	Light Red Kidney	39	6
15923	Light Red Kidney	40	3
161041	Light Red Kidney	41	5
161082	Light Red Kidney	39	5
BIG_RED	Light Red Kidney	40	5
CLOUSEAU	Light Red Kidney	41	3
PINK_PANTHER	Light Red Kidney	39	5
RONNIES_RED	Light Red Kidney	42	6
ROSIE	Light Red Kidney	44	5
SPITFIRE	Light Red Kidney	42	3
BELUGA	White Kidney	42	6
ND_WHITETAIL	White Kidney	41	6
SNOWSHOE	White Kidney	41	5
Mean		41	5
CV %		4.6	29.6
LSD 0.05		2.6	1.9
LSD 0.10		2.1954	1.6

*Days after planting

Root Rot score ranges from 1 to 9: 1-3 resistant; 4-6 tolerant; 7-9 susceptible
Planted: May 29 . Not Harvested. Previous crop: Corn.

Table 22. Variety Sources

BLACK VARIETY TRIAL		MISCELLANEOUS VARIETY TRIAL		
Name	Origin	Name	Class	Origin
ND_TWILIGHT	NDSU	ANDROMEDA	Great Northern	PROVITA
ZORRO	MSU	COYNE	Great Northern	U. of NEBRASKA
22B042	ADM	EIGER	Great Northern	MSU
22B127	ADM	LYRA	Great Northern	PROVITA
B18094173	ADM	ND_PEGASUS	Great Northern	NDSU
B5054313	ADM	ND181987	Great Northern	NDSU
B7071259	ADM	ND181989	Great Northern	NDSU
B7072252	ADM	ND182002	Great Northern	NDSU
B7072269	ADM	ND191310	Great Northern	NDSU
BUTTE	ADM	NE1-17-36	Great Northern	U. of NEBRASKA
SLATE	ADM	PANHANDLE_PRII	Great Northern	U. of NEBRASKA
ECLIPSE	NDSU	POWDERHORN	Great Northern	MSU
BLACK_PEARL	MSU	VIRGO	Great Northern	PROVITA
KONA	MSU	WHITE_PEARL	Great Northern	U. of NEBRASKA
ND133012	NDSU	CORAL	Pink	MSU
ND151311	NDSU	ND_ROSALIND	Pink	NDSU
ND151502	NDSU	ND171846	Pink	NDSU
ND172422	NDSU	ND171854	Pink	NDSU
ND192089	NDSU	ND181833	Pink	NDSU
NDF141162	NDSU	MERLOT	Small Red	MSU
ND151355	NDSU	NDF151006-2	Small Red	NDSU
13505	PROVITA	USDA-LAVA	Small Red	CENTRAL BEAN
BLACKBEARD	PROVITA			
BLACK_TAILS	PROVITA			
NIMBUS	PROVITA			
SPECTRE	PROVITA			
SLOW-DARK PINTO VARIETY TRIAL		NAVY VARIETY TRIAL		
Name	Origin	Name	Origin	
ND_PALOMINO	NDSU	ARMADA	PROVITA/ADM	
ND_RODEO	NDSU	AUSABLE	MSU	
USDA-DIAMONDBACK	USDA/KELLEY BEAN	BLIZZARD	PROVITA/ADM	
ND172529	NDSU	EX1803-N	TVS	
ND172582	NDSU	EX1804-N	TVS	
ND181664	NDSU	EX2109-N	TVS	
ND181676	NDSU	EX2111-N	TVS	
WILDCAT	U. of NEBRASKA	HMS_MEDALIST	AMERISEED/ADM	
GLEAM	PROVITA/ADM	HMS_VICTORY	PROVITA/ADM	
MYSTIC	PROVITA/ADM	LIBERTY	PROVITA/ADM	
SHINE	PROVITA/ADM	ND_POLAR	NDSU	
VIBRANT	PROVITA/ADM	ND131944	NDSU	
BRONCO	TVS	ND151160	NDSU	
TVS21-3-2	TVS	ND151264	NDSU	
TVS21-5-5	TVS	ND172173	NDSU	
TVS21-7-2	TVS	ND191413	NDSU	
TVS21-7-8	TVS	ND191430	NDSU	
WMM-556	NDSU	NDF140993	NDSU	
WMM-750	NDSU	OAC_CHARM	TVS	
WMM-820	NDSU	SV1893GH	SEMINIS	
		T9905	HYLAND	
		VALIANT	PROVITA/ADM	

Table 22. Variety Sources (continuation)

PINTO VARIETY TRIAL (PVT)		KIDNEY VARIETY TRIAL (KVT)		
Name	Origin	Name	Class	Origin
CANCUN	PROVITA/ADM	OAC_FIRESTRIPE	Cranberry	TVS
CHARRO	MSU	OAC_NAVABI	Cranberry	TVS
COWBOY	PROVITA/ADM	161156	Dark Red Kidney	PROVITA
EX1844-P	TVS	161165	Dark Red Kidney	PROVITA
EX1845-P	TVS	181017	Dark Red Kidney	PROVITA
EX2141-P	TVS	181021	Dark Red Kidney	PROVITA
EX2145-P	TVS	CHAPARRAL	Dark Red Kidney	PROVITA
EX2146-P	TVS	CINDER	Dark Red Kidney	ADM
EX2242-P	TVS	EPIC	Dark Red Kidney	PROVITA
EX2248-P	TVS	MONTCALM	Dark Red Kidney	MSU
LA_PAZ	PROVITA/ADM	ND_REDBARN	Dark Red Kidney	NDSU
LARIAT	NDSU	ND201908	Dark Red Kidney	NDSU
MONTERREY	PROVITA/ADM	ND201922	Dark Red Kidney	NDSU
ND_FALCON	NDSU	ND211239	Dark Red Kidney	NDSU
ND131502	NDSU	RAMPART	Dark Red Kidney	PROVITA
ND171233	NDSU	RED HAWK	Dark Red Kidney	MSU
NDF150259-2	NDSU	SEATTLE	Dark Red Kidney	PROVITA
NDF150270-3	NDSU	SPIRE	Dark Red Kidney	PROVITA
RUSTLER_(16400)	PROVITA/ADM	TALON	Dark Red Kidney	NDSU
SANTA_MARIA_(13431)	PROVITA/ADM	15916	Light Red Kidney	PROVITA
SV6139GR	SEMINIS	15923	Light Red Kidney	PROVITA
TORREON	PROVITA/ADM	161041	Light Red Kidney	PROVITA
TVS21-4-3	TVS	161082	Light Red Kidney	PROVITA
TVS21-4-6	TVS	BIG_RED	Light Red Kidney	PROVITA
TVS21-6-10	TVS	CLERK	Light Red Kidney	CBDN
TVS21-6-16	TVS	CLOUSEAU	Light Red Kidney	CHECK
USDA-CODY	USDA/CENTRAL BEAN	ND151660	Light Red Kidney	NDSU
USDA-RATTLER	USDA/KELLEY BEAN	ND202005	Light Red Kidney	NDSU
WINDBREAKER	SEMINIS	ND202010	Light Red Kidney	NDSU
WMM-1022	NDSU	PINK_PANTHER	Light Red Kidney	SEMINIS
WMM-975P	NDSU	RONNIE'S_RED	Light Red Kidney	PROVITA
		ROSIE	Light Red Kidney	NDSU
		SPITFIRE	Light Red Kidney	ADM
		BELUGA	White Kidney	MSU
		ND_WHITETAIL	White Kidney	NDSU
		ND202107	White Kidney	NDSU
		ND202133	White Kidney	NDSU
		SNOWSHOE	White Kidney	TVS

NDSU does not endorse commercial products or companies even though reference may be made to tradenames, trademarks or service names.

For more information on this and other topics, see www.ndsu.edu/extension

County commissions, North Dakota State University and U.S. Department of Agriculture cooperating. NDSU does not discriminate in its programs and activities on the basis of age, color, gender expression/identity, genetic information, marital status, national origin, participation in lawful off-campus activity, physical or mental disability, pregnancy, public assistance status, race, religion, sex, sexual orientation, spousal relationship to current employee, or veteran status, as applicable. Direct inquiries to Vice Provost, Title IX/ADA Coordinator, Old Main 100, 701-231-7708, ndsu.eoaa@ndsu.edu. This publication will be made available in alternative formats for people with disabilities upon request, 701-231-7881.