

Fig. 474. Diagrammatic representation of the relationships of the main endocrine organs.

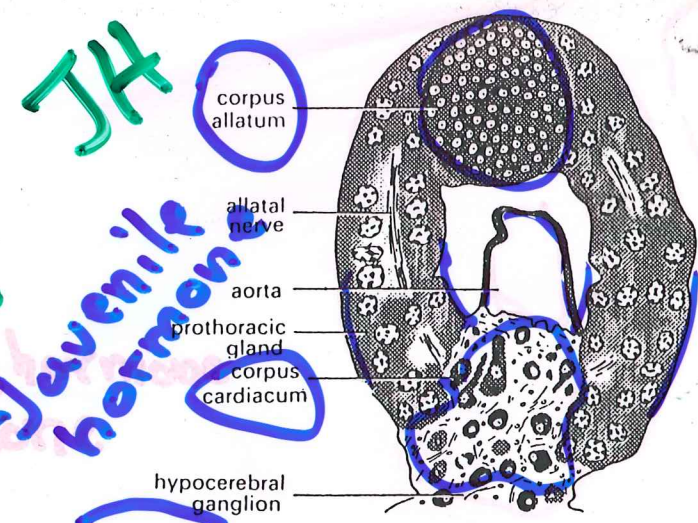


Fig. 477. Ring gland from the early pupa of *Eristalis* (Diptera). Here the ring gland is fused with the hypocerebral ganglion, but this is not always the case (after Cazal, 1948).

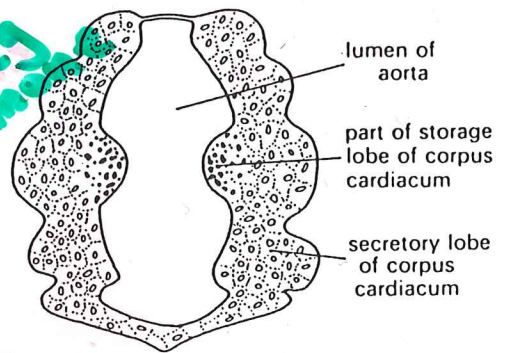


Fig. 476. Transverse section through the posterior parts of the corpora cardiaca of *Schistocerca* (after Highnam, 1961).

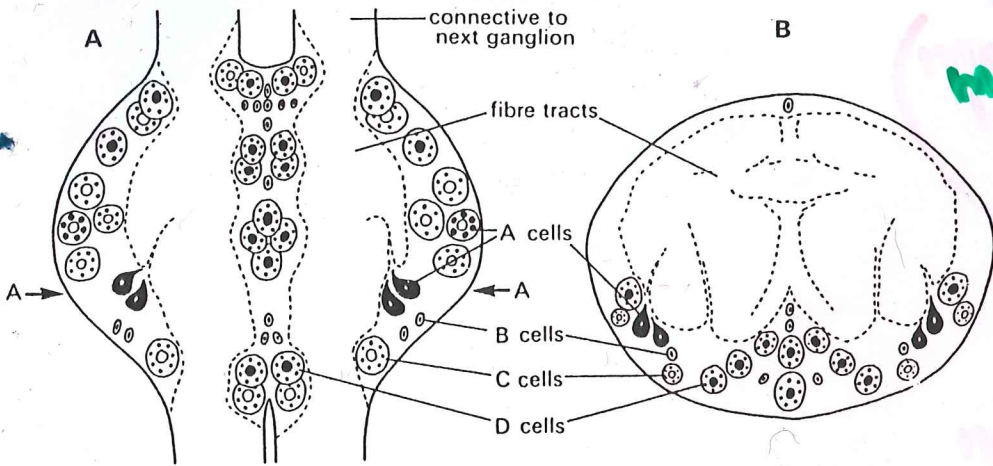


Fig. 475. Distribution of different types of neurosecretory cells in the third abdominal ganglion of *Schistocerca*. A. Dorsal view. B. Transverse section at AA (after Delphin, 1965).

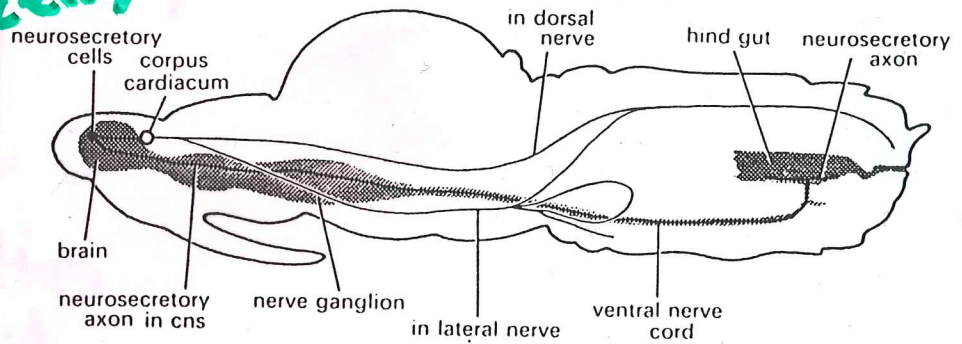


Fig. 478. Pathways of axons which carry neurosecretion from the brain and corpora cardiaca in the aphid *Drepanosiphum* (Homoptera) (after Johnson, 1962).