

## **Blattaria**

Common Name: Cockroaches.

Metamorphosis: Hemimetabolous.

### CHARACTERISTICS

Body: Medium to large; oval in shape, usually somewhat flattened.

Head: Opisthognathous; concealed beneath the pronotum.

Mouthparts: Ectognathous; chewing.

Eyes: Compound eyes present.

Antennae: Relatively long, usually filiform.

Wings: May be winged, wingless or short winged; front pair of wings, when present, are hardened and leathery (tegmina).

Legs: The legs are cursorial (running); tarsi are 5-segmented with the 4th segment the shortest.

Abdomen: Cerci present, one to many-segmented.

Comments: Many are household pests. They lay their eggs in capsules called oothecae. Nocturnal.

### **FAMILIES**

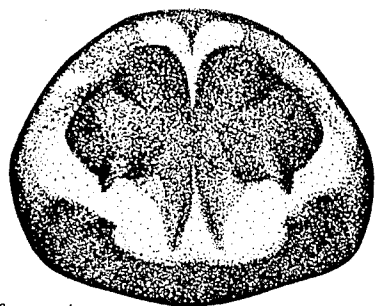
Blattidae: usually larger than 18 mm in length; spines on posteroventral margin of front femora of nearly equal length; female subgenital plate divided longitudinally; male styli similar, slender, straight. Includes the American cockroach (well-developed wings) and the Oriental cockroach (wings reduced).

Blatellidae: usually smaller than 12 mm in length; spines on posteroventral margin of front femora decrease in size distally; female subgenital plate not divided; male styli variable, often modified. Includes the German cockroach (2 longitudinal black bands on pronotum) and the brownbanded cockroach (no black bands on pronotum; with pale transverse band on middle of wings).

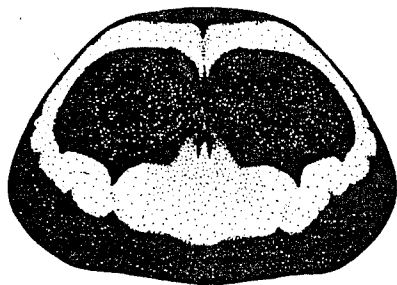
Blaberidae: contains the very large cockroaches, including the hissing cockroach from Madagascar.

Polyphagidae: contains a small (3 mm) species which lives in leaf-cutting ant nests.

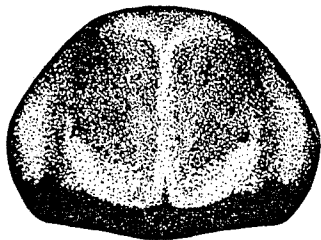
**Blattaria**  
**Family Blattidae**  
**Large cockroaches**



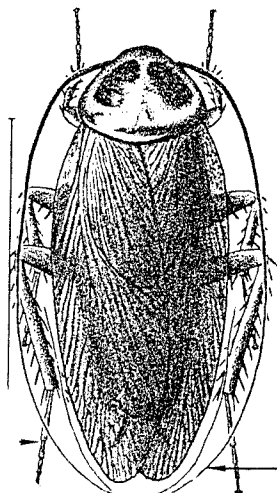
*P. americana*



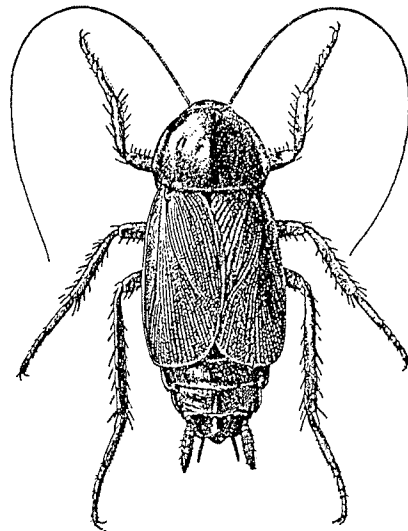
*P. australasiae*



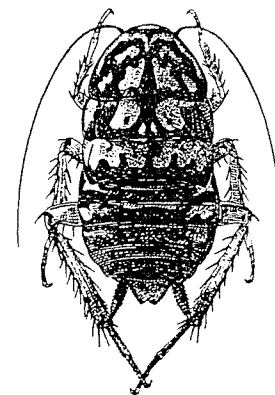
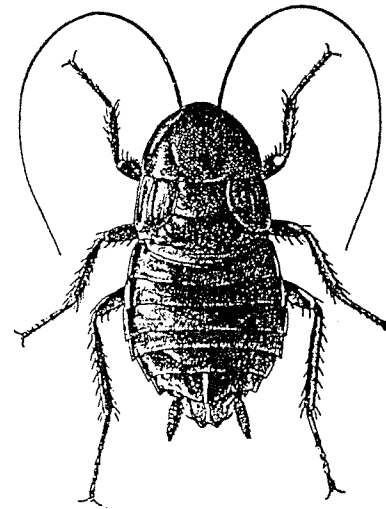
*P. brunnea*



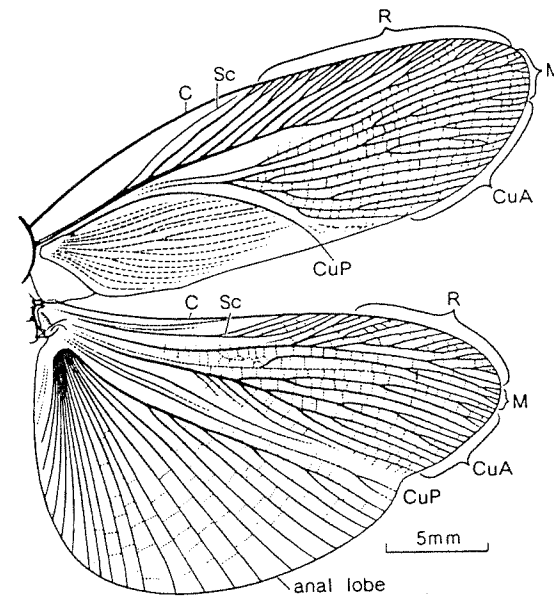
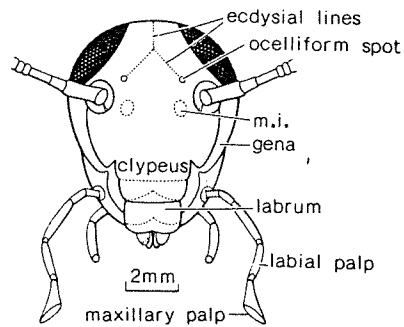
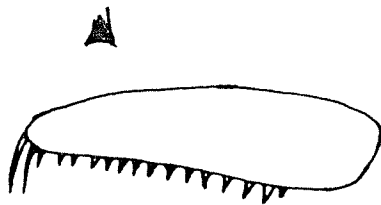
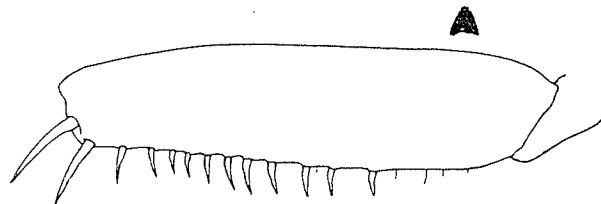
AMERICAN



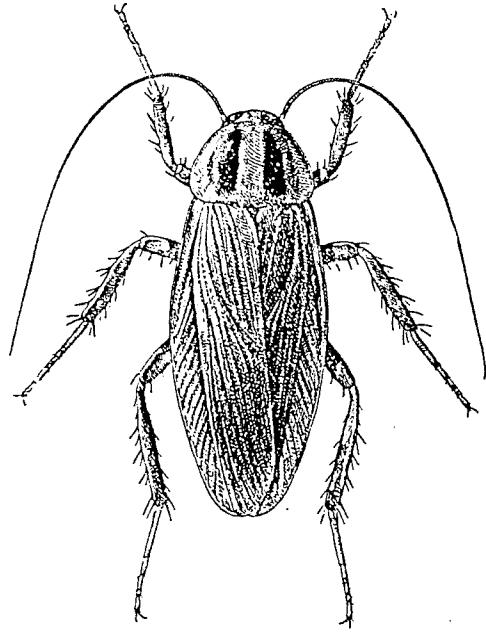
ORIENTAL



— *Nybippa rambipola* Stoll (Blattidae).

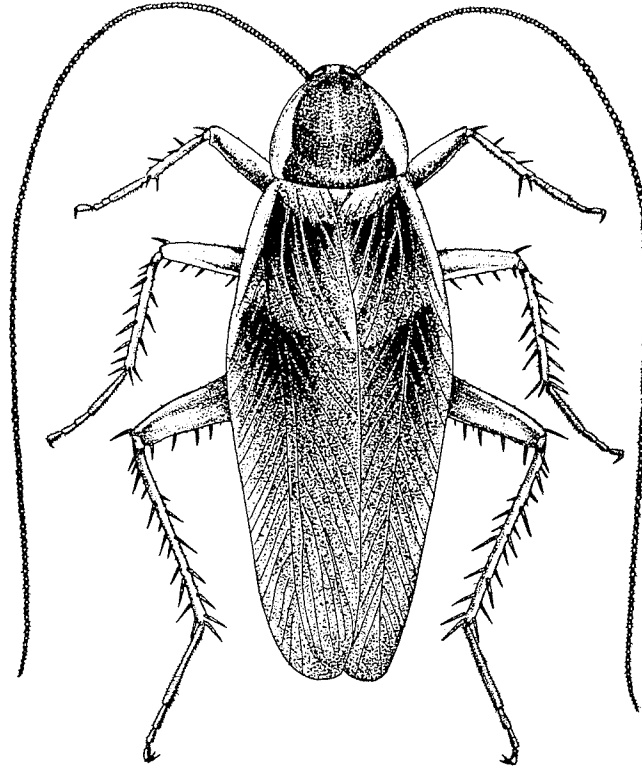


Blattaria  
Family Blattellidae  
Small cockroaches

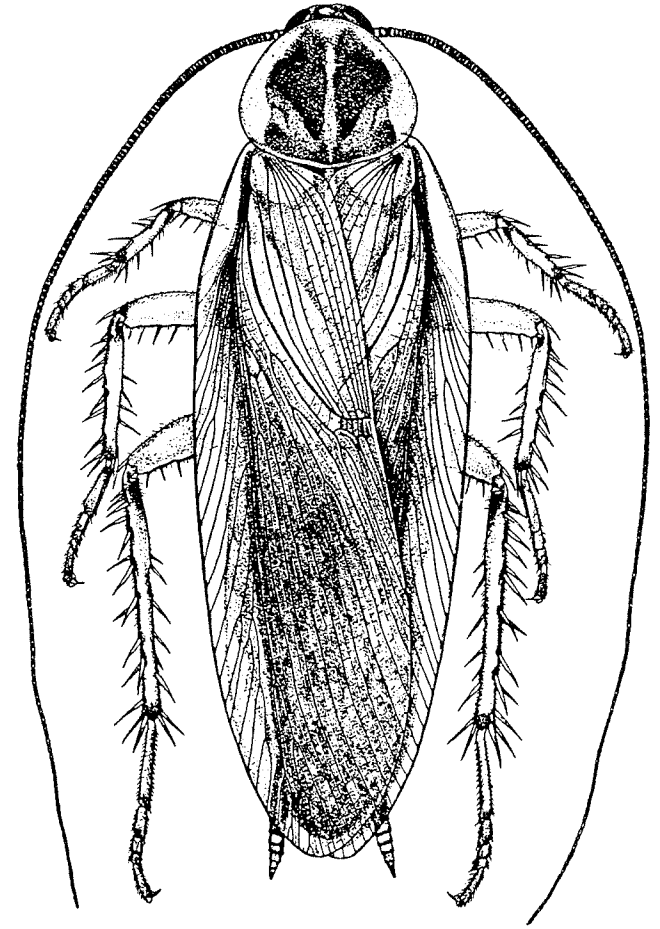


40

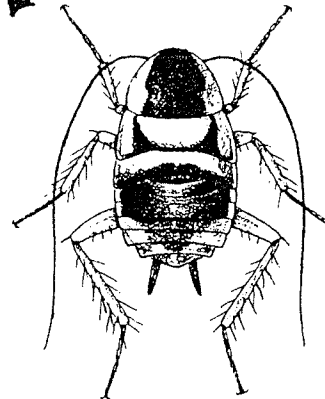
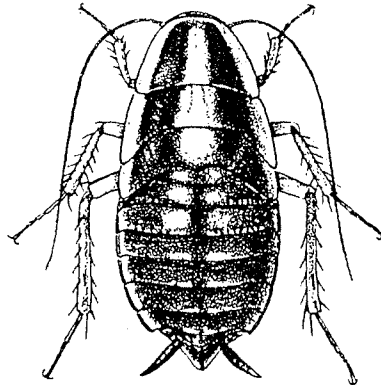
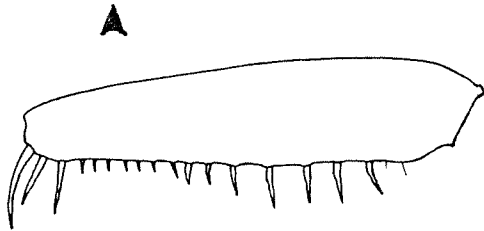
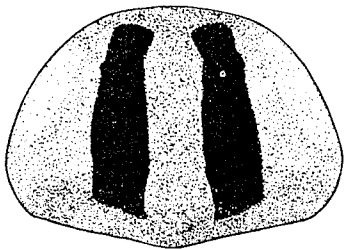
*Blattella germanica*.



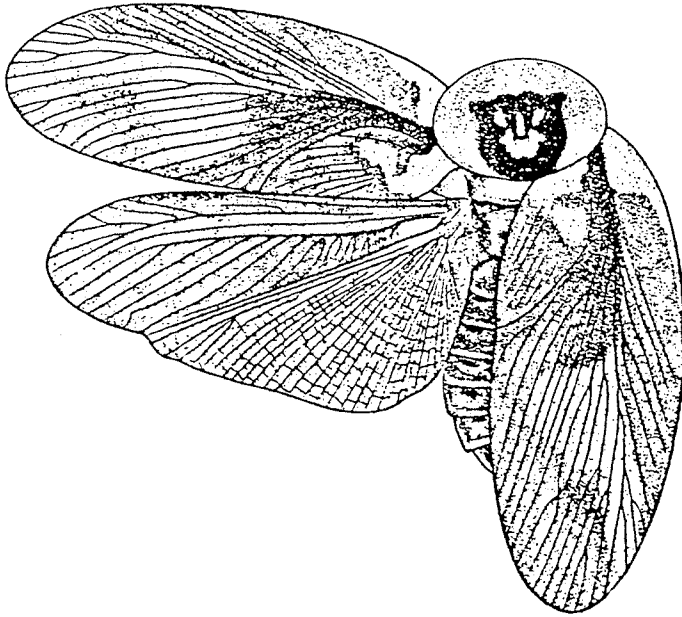
*Supella longipalpa*, male.



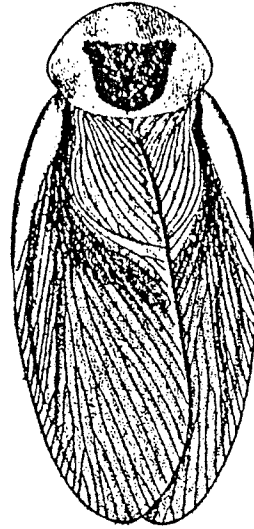
*Parcoblatta pennsylvanica*, male. After Vickery et al. (1974).



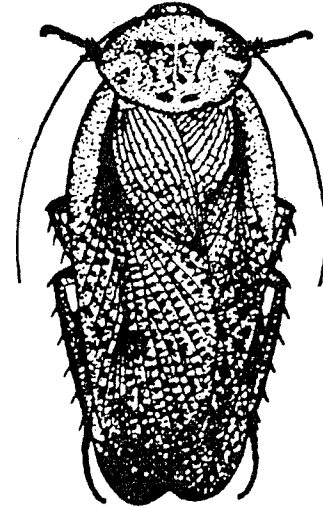
Blattaria  
 Family Blaberidae  
 Tropical cockroaches



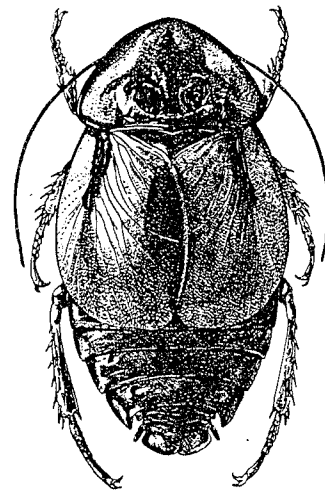
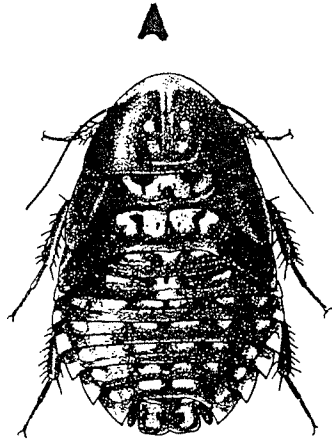
25



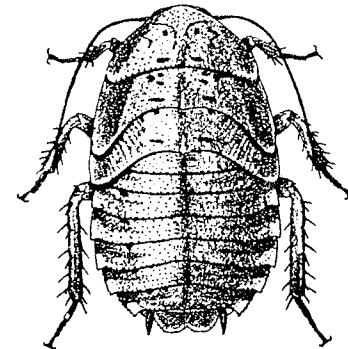
26



*Blaberus* spp. 25, *B. craniifer*; 26, *B. discoidalis*. 25.



— *Monastria cassidea* Esch  
 (Blaberidae).



*Leucophaea maderae* (Fabricius)