

# THYSANOPTERA

Common Name: Thrips.

Etymology: Thysan- = fringe; -ptera = wing.

Metamorphosis: Hemimetabolous (?); life cycle strongly suggestive of holometabolism.

## CHARACTERISTICS

Body: Minute to small; slender, usually dark colored.

Head: Hypognathous, with obvious neck region.

Mouthparts: Asymmetric, conelike, ectognathous mouthparts adapted for rasping and sucking; right mandible reduced or lacking.

Eyes: Small compound eyes; 3 dorsal ocelli in winged forms; ocelli lacking in wingless forms.

Antennae: Short; filiform; 6-10 segments.

Wings: Two pairs when present; long, narrow, few veins, fringed prominently with hairs; coupled by basal hooks; brachypterous and apterous forms occur.

Legs: Short; 1- or 2-segmented tarsi; post-tarsi with paired or single claws and a bladder-like tip (Physopoda).

Abdomen: Cerci lacking.

Comments: Some species of thrips (Tubilifera) are predaceous and may bite man; most are plant feeders. They may transmit plant diseases.

## SUBORDERS

Terebrantia: Last abdominal segment conical or rounded; females with well-developed ovipositor.

\* Thripidae: common thrips, females have ovipositor curved downward, antennal sense cones enlarged into large setae.

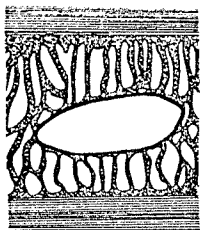
Tubilifera: Last abdominal segment tubular; females lack an ovipositor.

\* Phlaeothripidae: only family in this suborder.

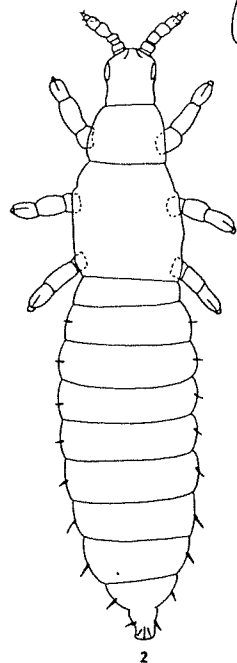
# Order Thysanoptera

## Suborder Terebrantia

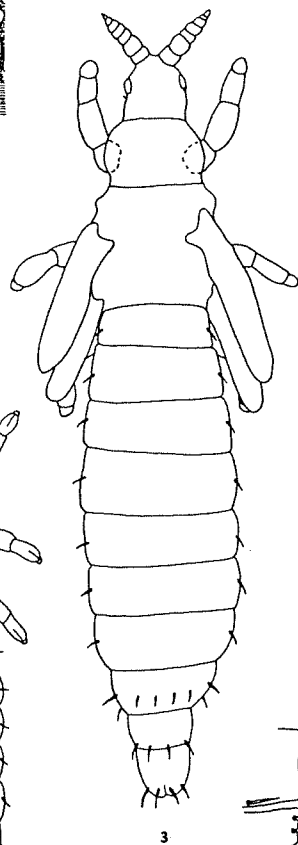
### True thrips



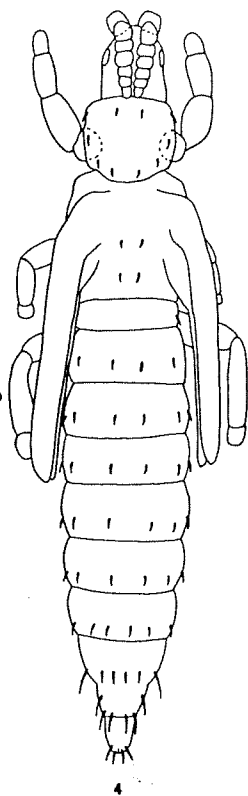
1



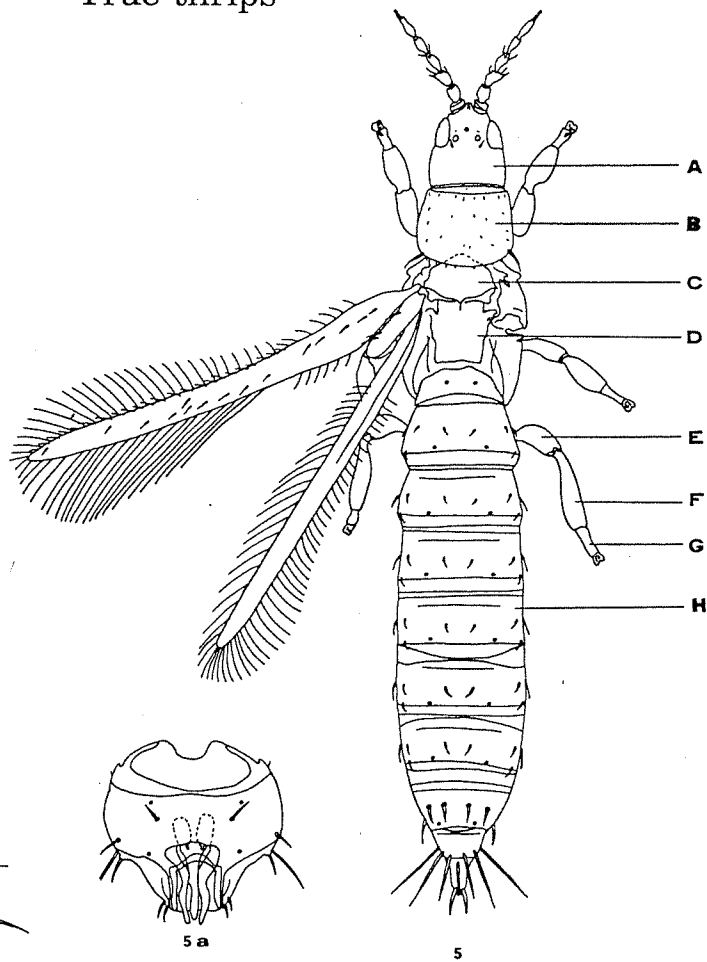
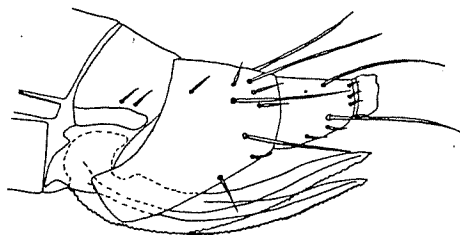
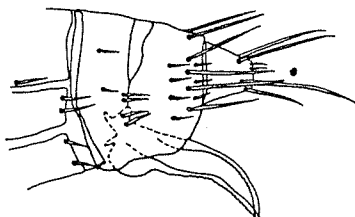
2



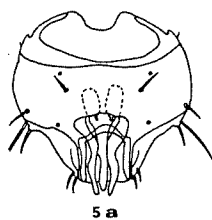
3



4

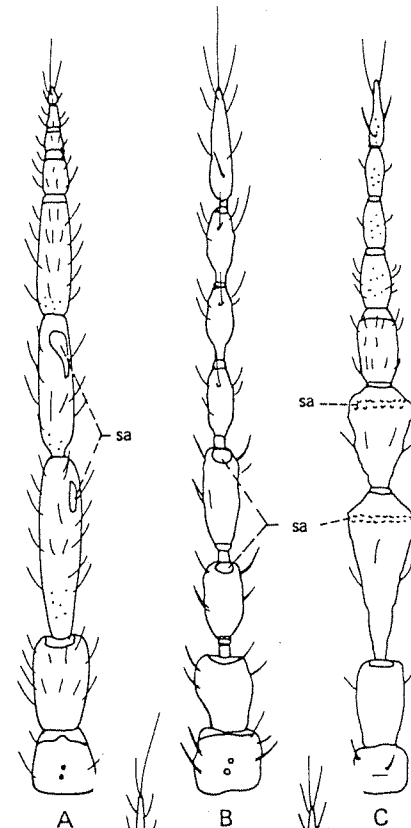


A. Head. B. Prothorax. C. Mesothorax. D. Metathorax.  
E. Femora. F. Tibia. G. Tarsus. H. Abdomen.



5a

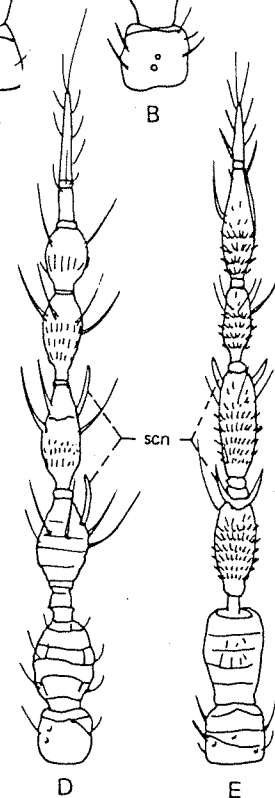
5



A

B

C



D

E

# Order Thysanoptera

## Suborder Tubulifera

Stout-bodied thrips

