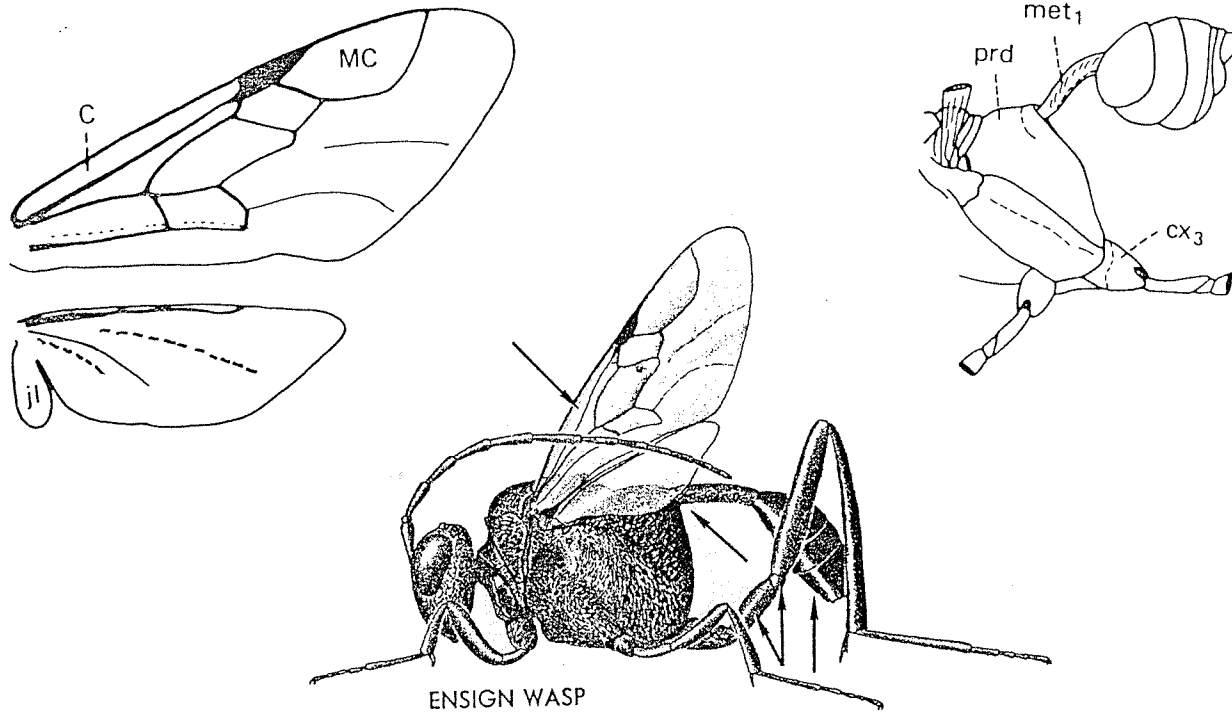
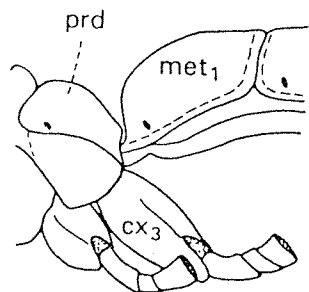
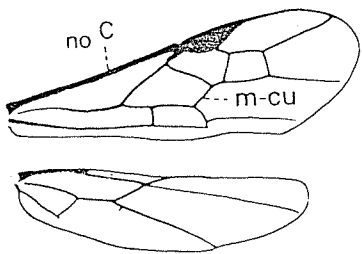
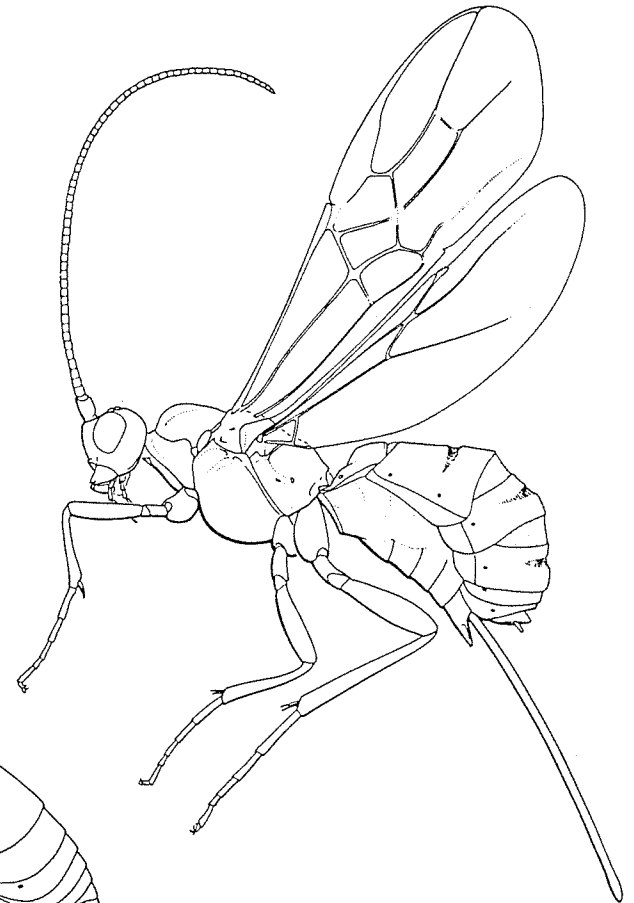
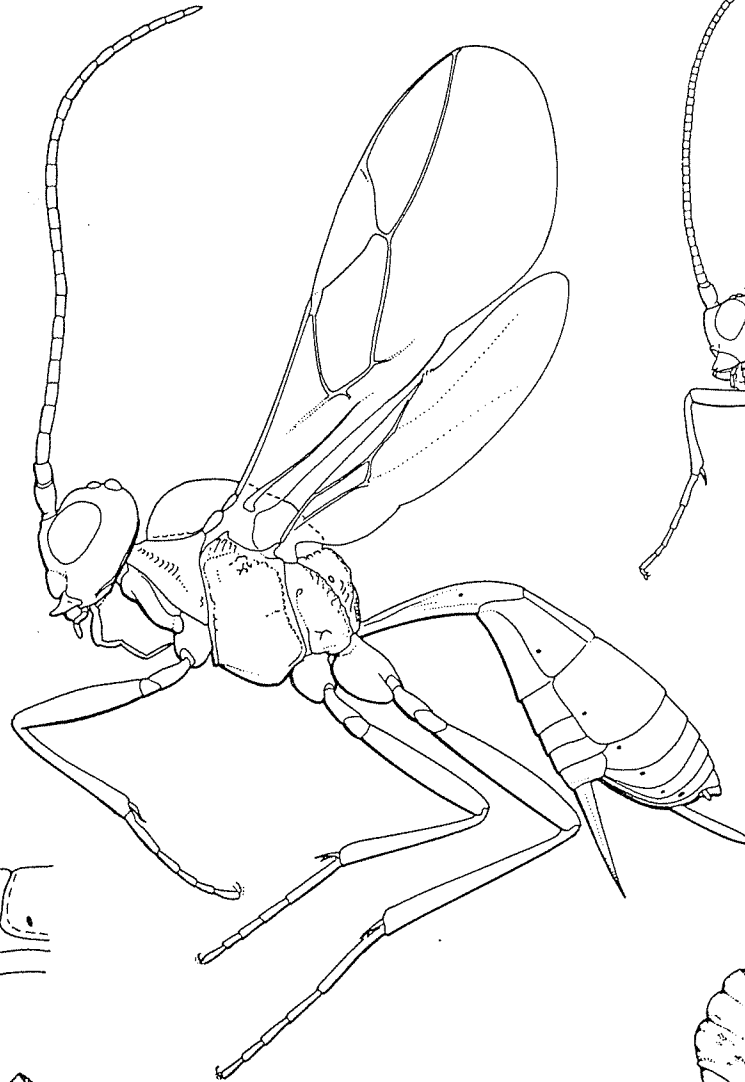
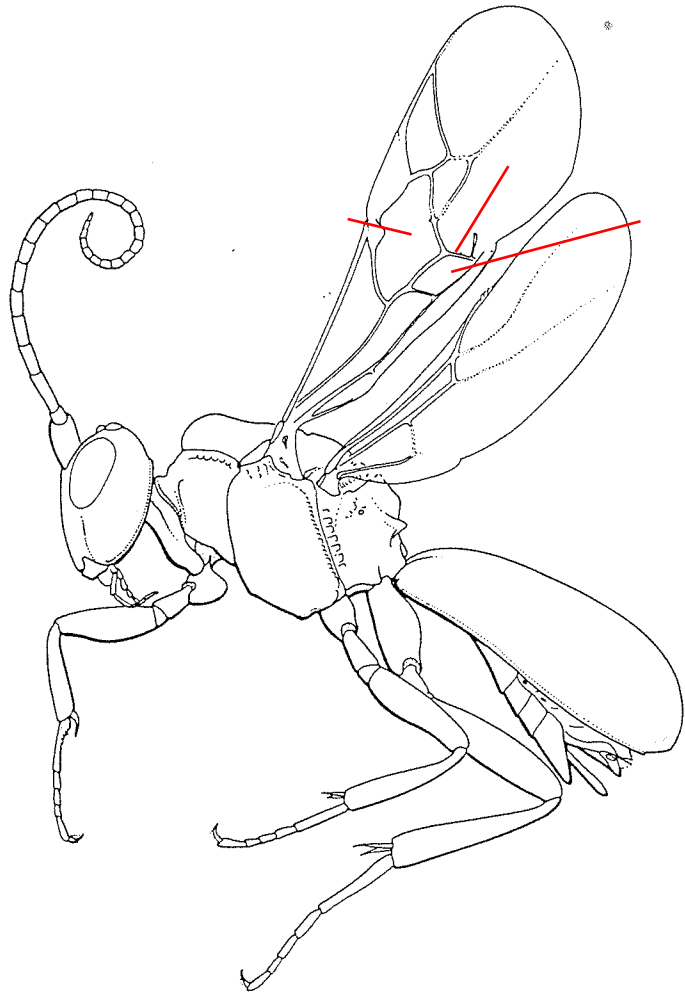


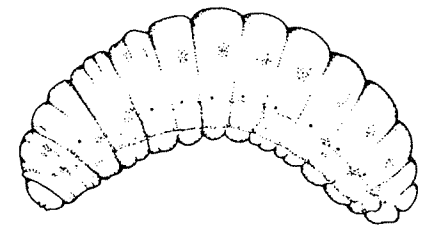
HYMENOPTERA: Apocrita
Superfamily Evanioidea
Family Evaniidae
Ensign wasps



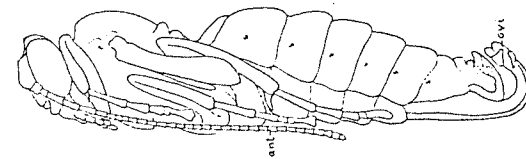
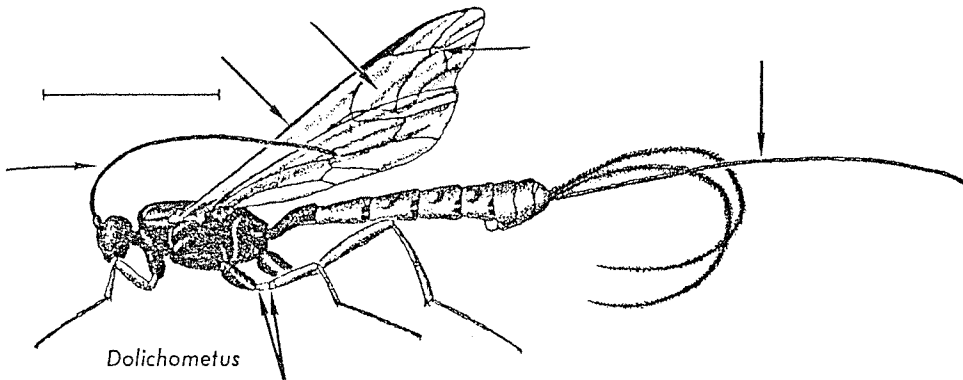
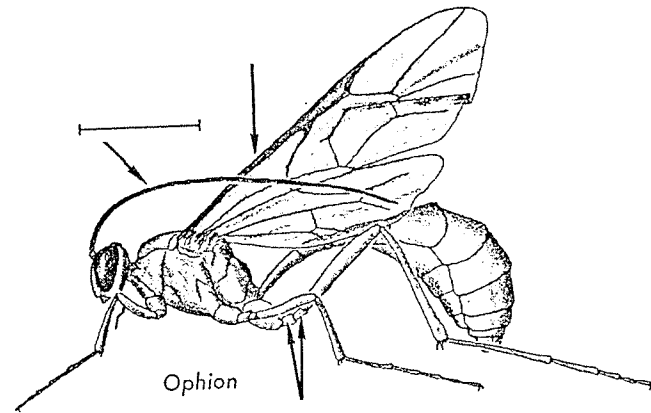
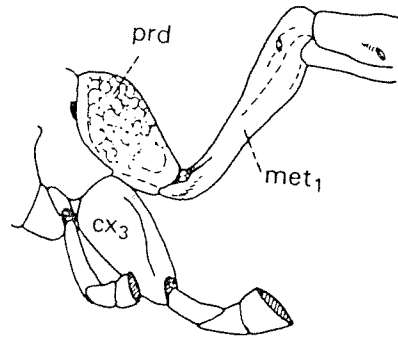
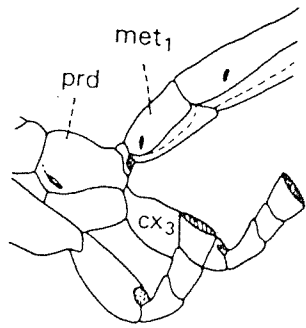
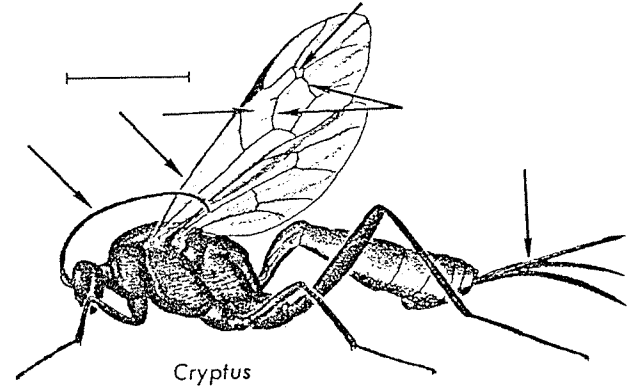
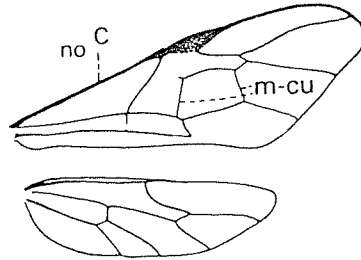
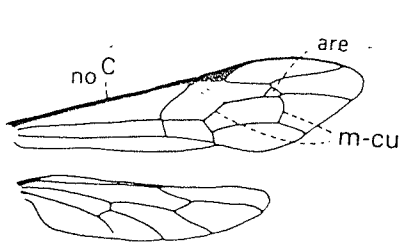
HYMENOPTERA: Apocrita
Superfamily Ichneumonoidea
Family Braconidae
Braconid wasps



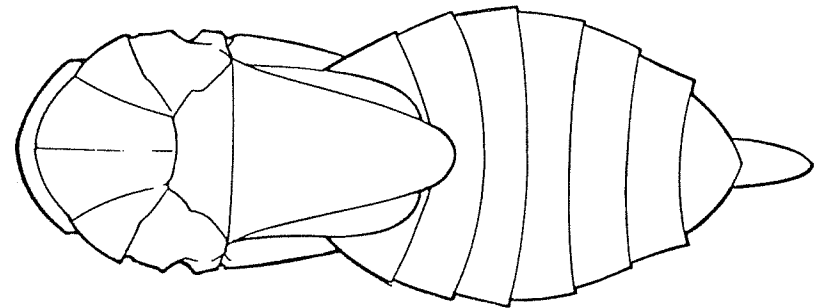
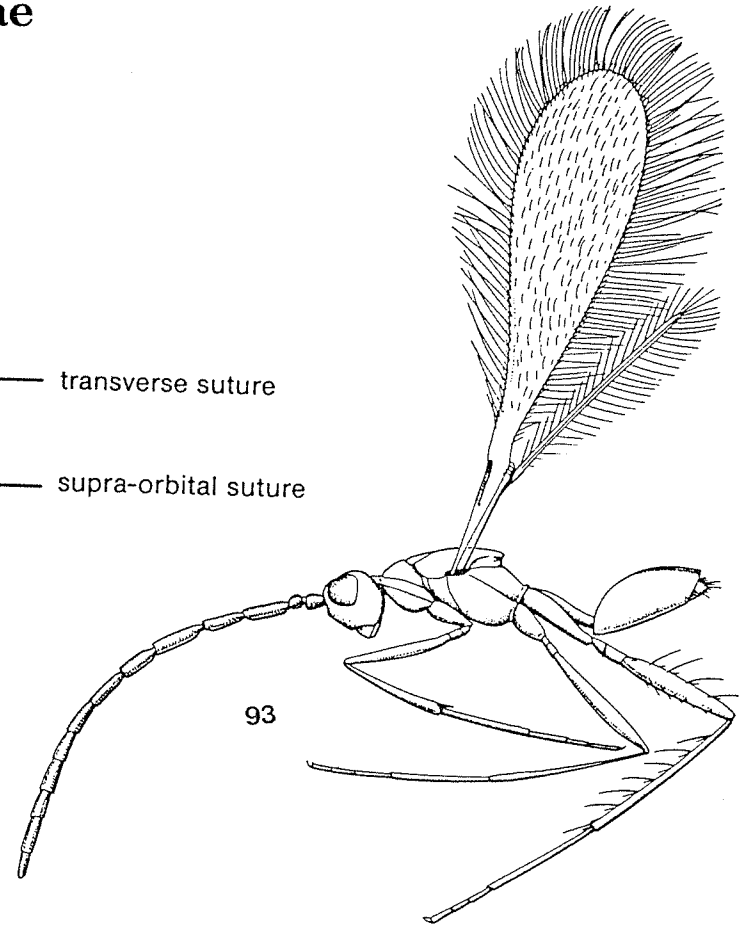
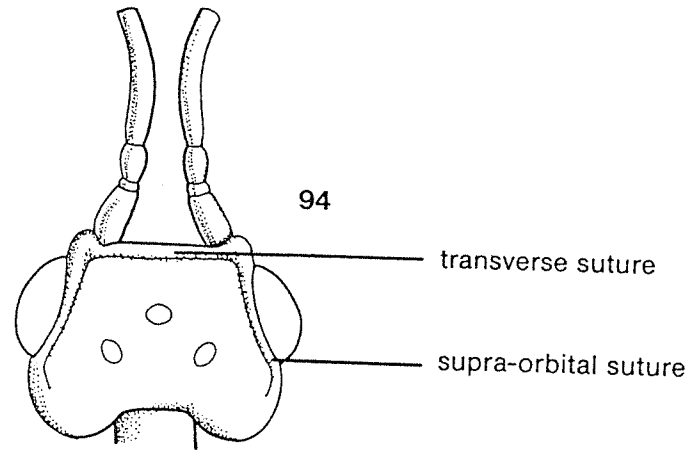
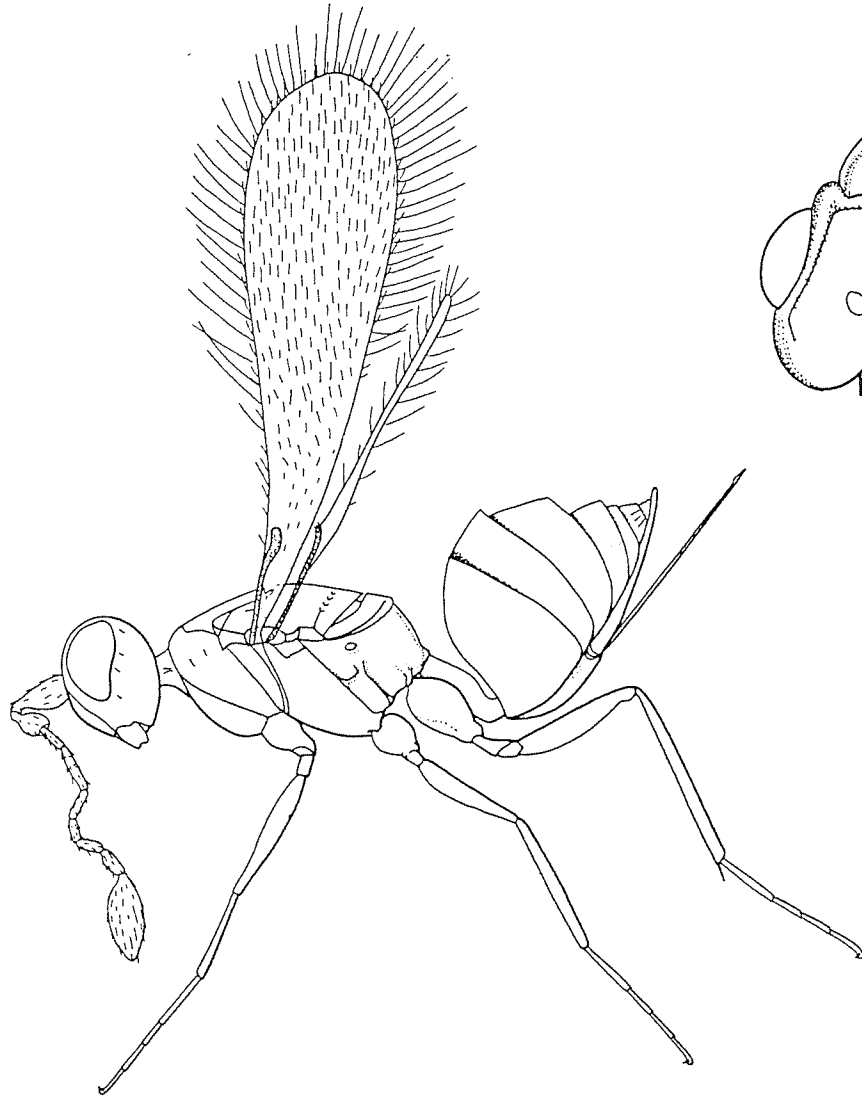
CX3



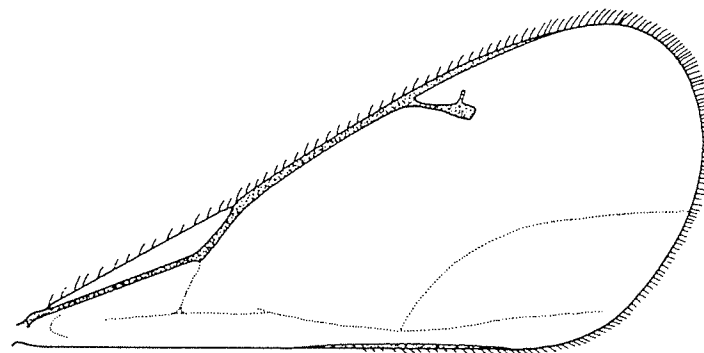
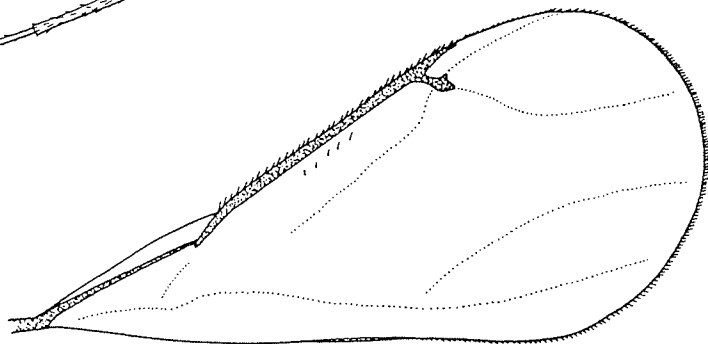
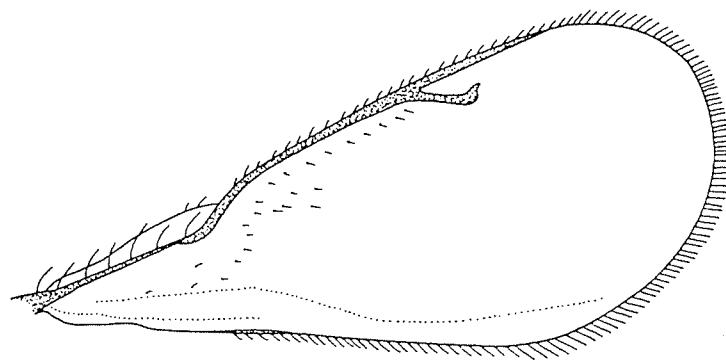
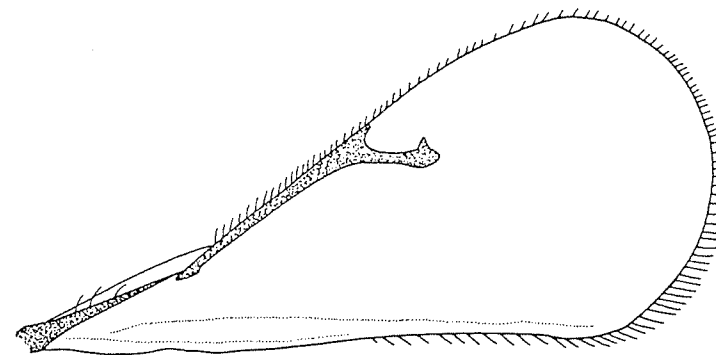
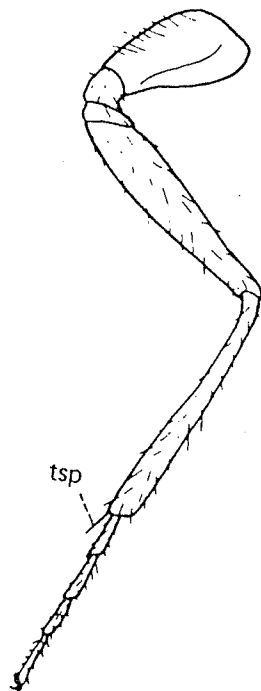
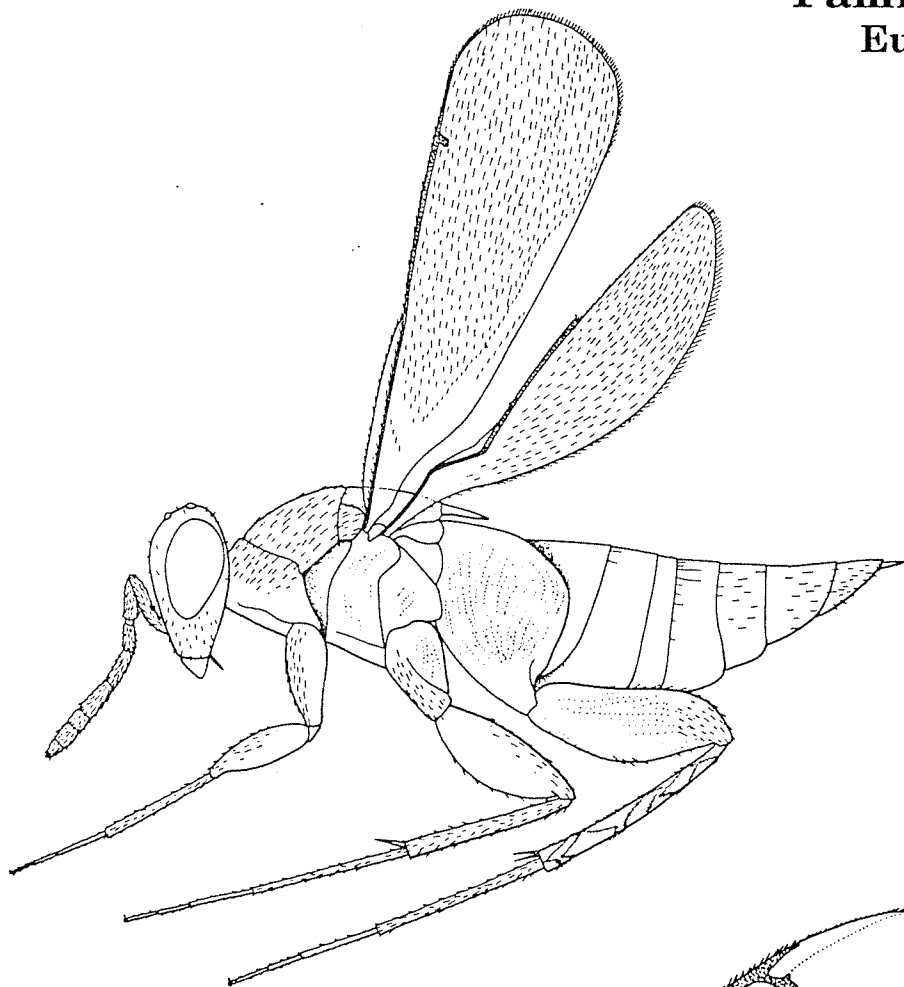
HYMENOPTERA: Apocrita
Superfamily Ichneumonoidea
Family Ichneumonidae
Ichneumonid wasps



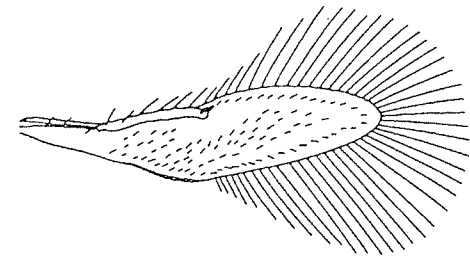
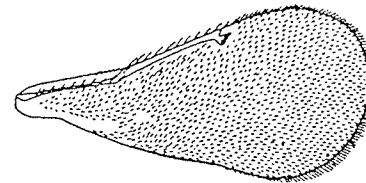
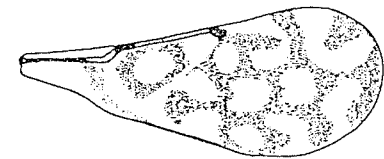
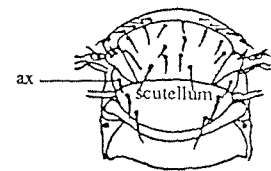
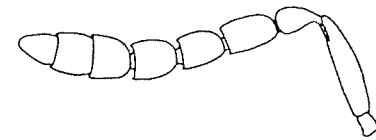
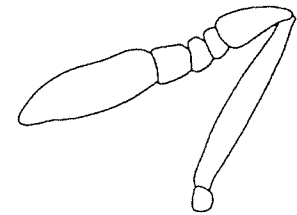
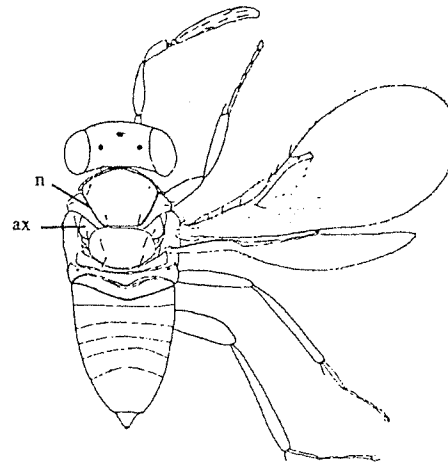
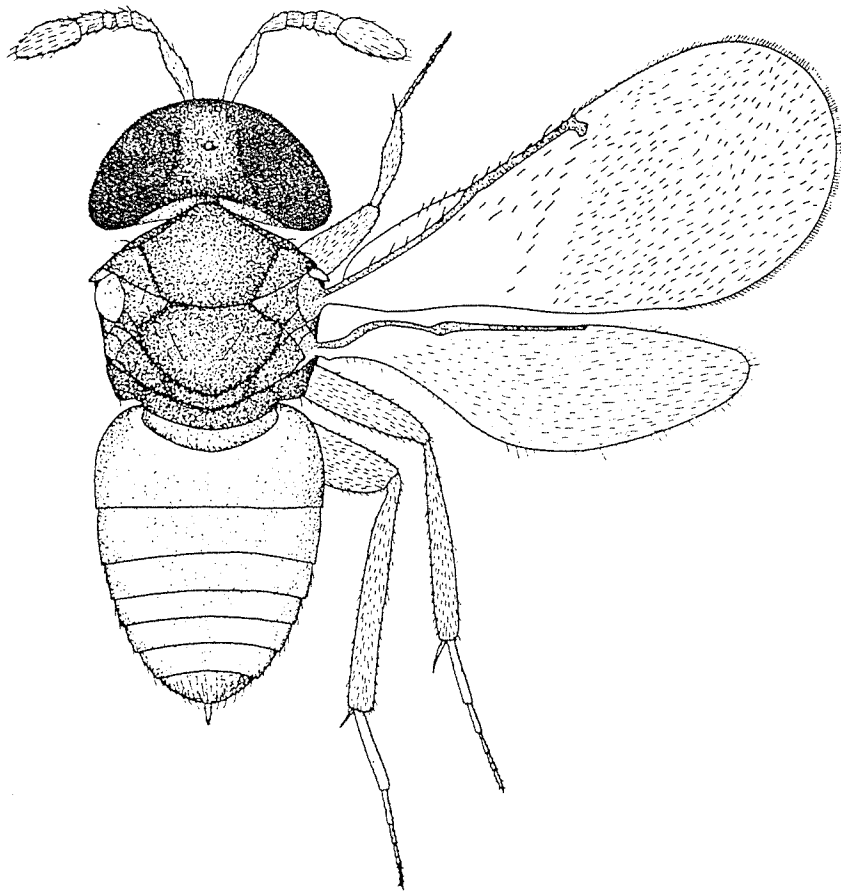
HYMENOPTERA: Apocrita
Superfamily Chalcidoidea
Family Mymaridae
Fairyflies



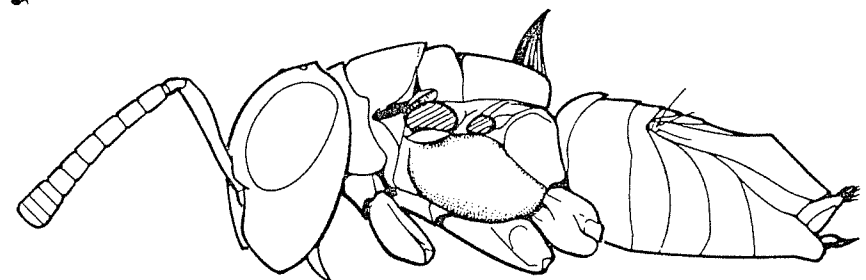
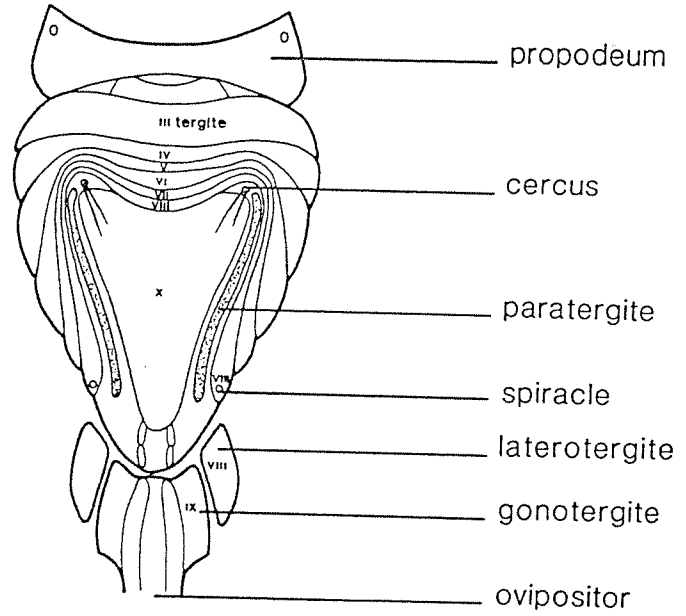
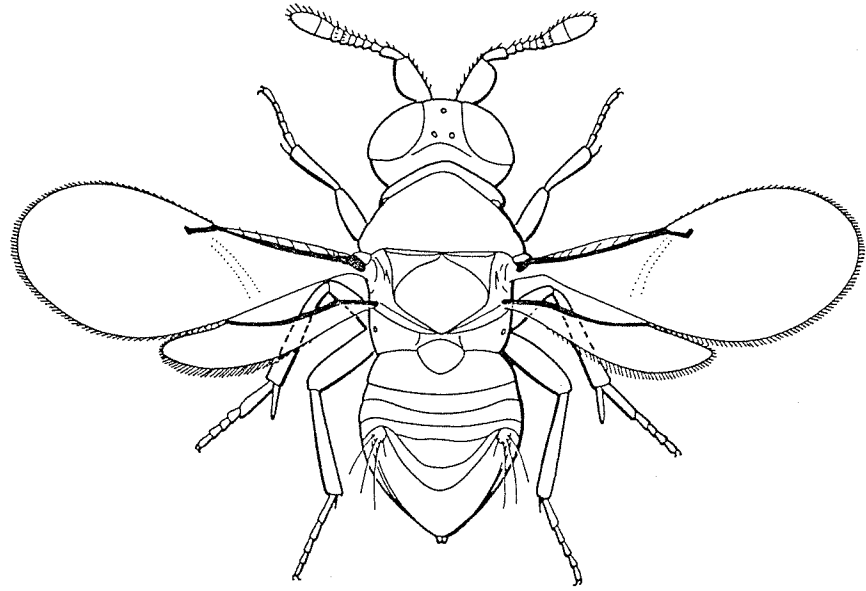
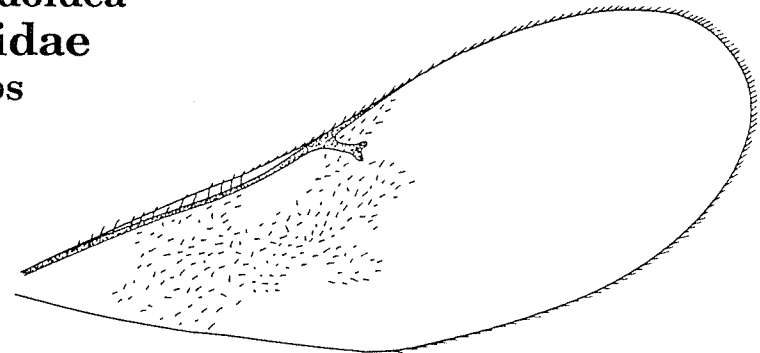
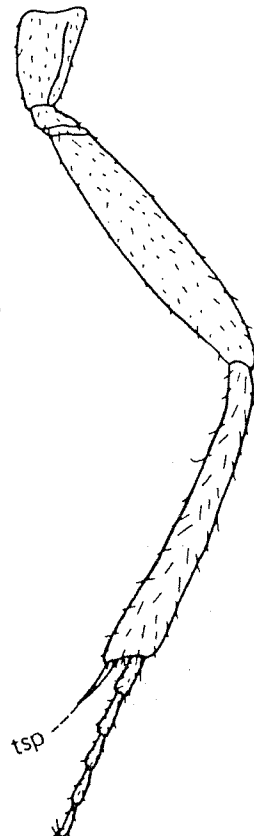
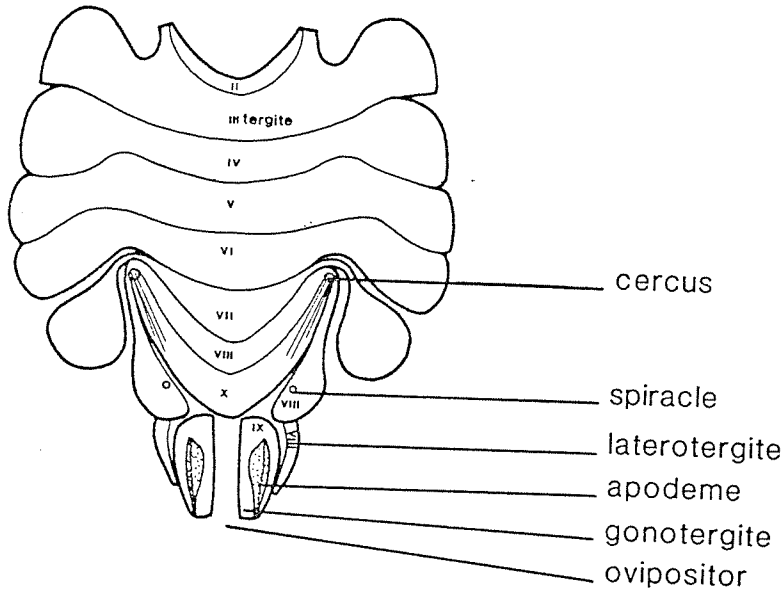
HYMENOPTERA: Apocrita
Superfamily Chalcidoidea
Family Eulophidae
Eulophid wasps



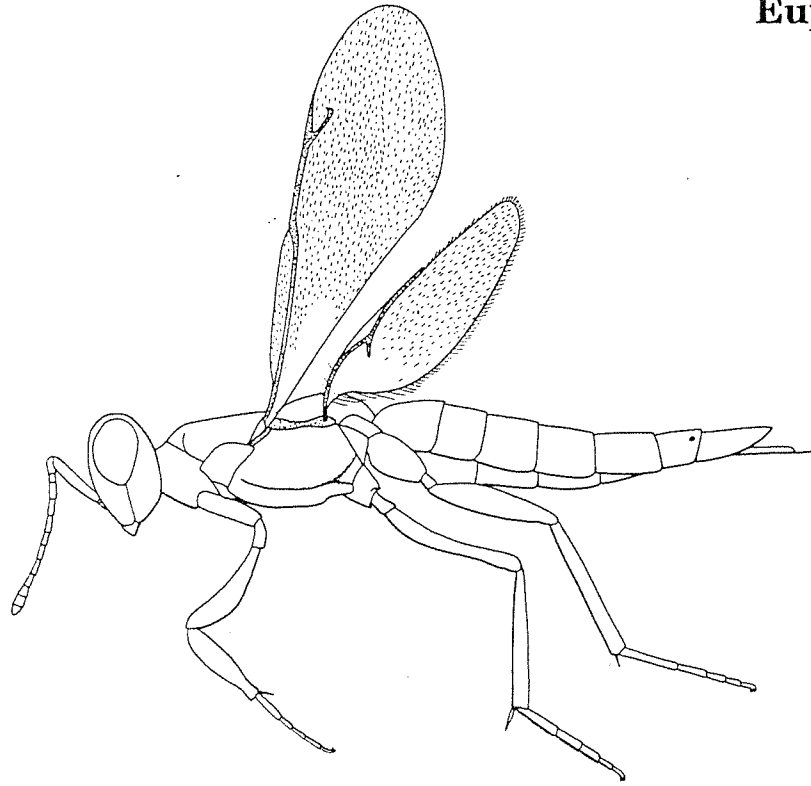
HYMENOPTERA: Apocrita
Superfamily Chalcidoidea
Family Aphelinidae
Aphelinid wasps



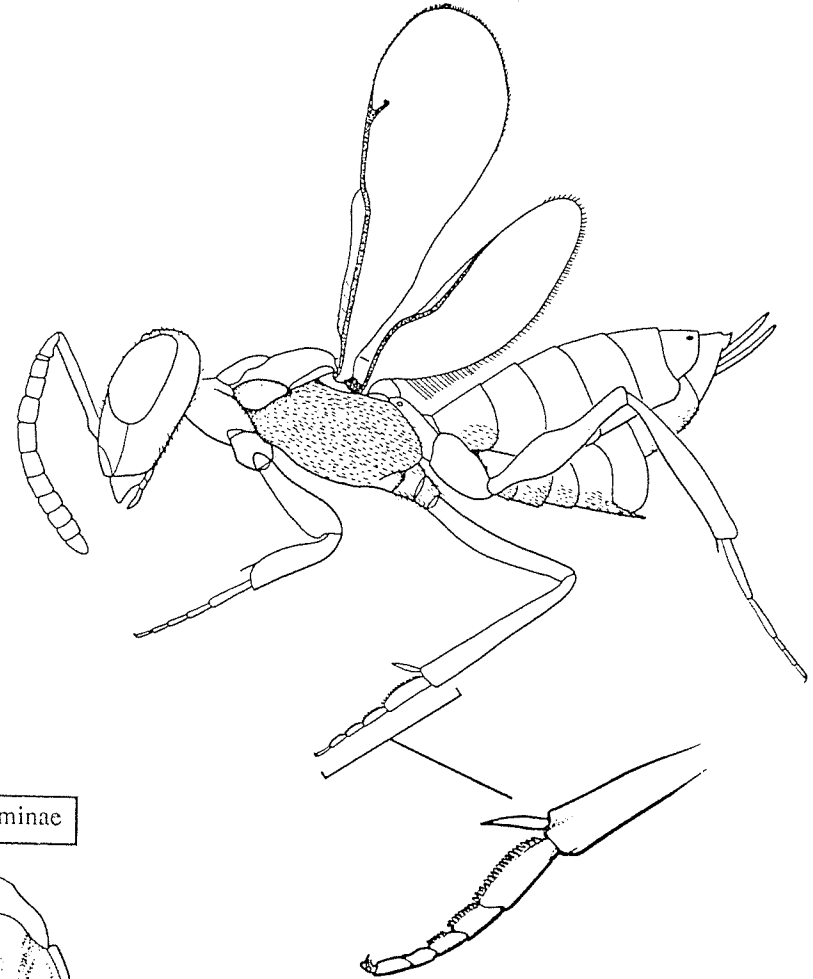
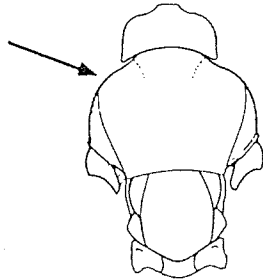
HYMENOPTERA: Apocrita
Superfamily Chalcidoidea
Family Encyrtidae
Encyrtid wasps



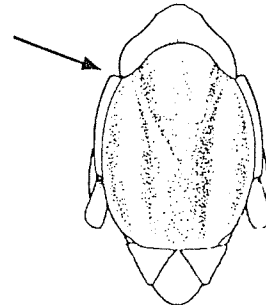
HYMENOPTERA: Apocrita
Superfamily Chalcidoidea
Family Eupelmidae
Eupelmid wasps



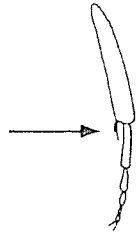
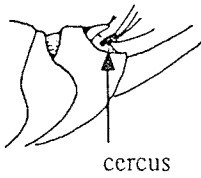
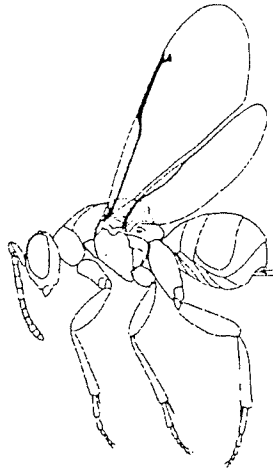
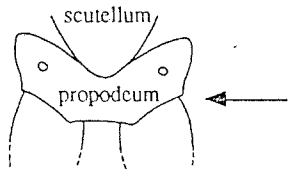
Calosotinae



Eupelminae

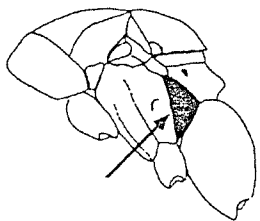


HYMENOPTERA: Apocrita
Superfamily Chalcidoidea
Family Torymidae
Torymid wasps

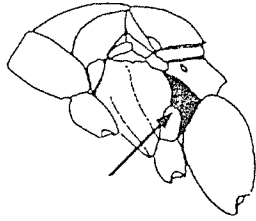


Metapleuron with anterior margin straight.

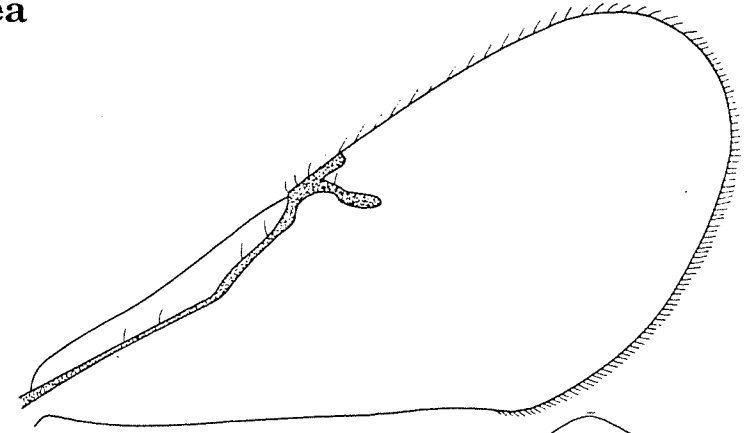
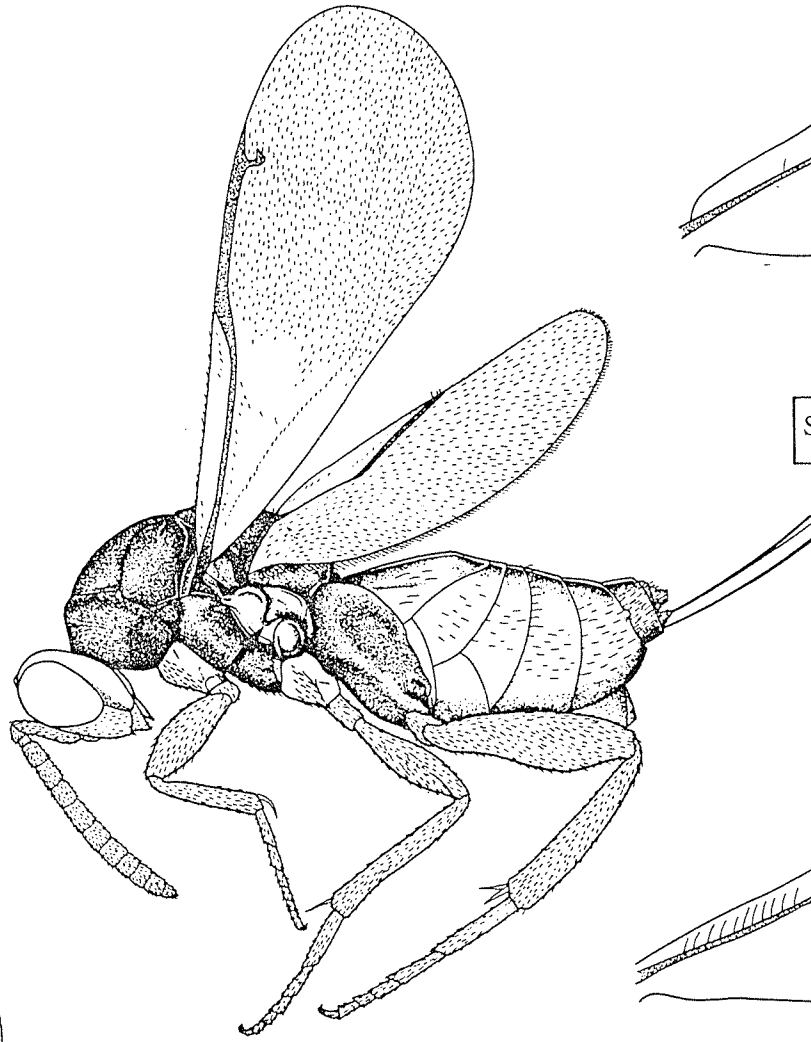
Metapleuron with anterior margin angulate or protruding forward.



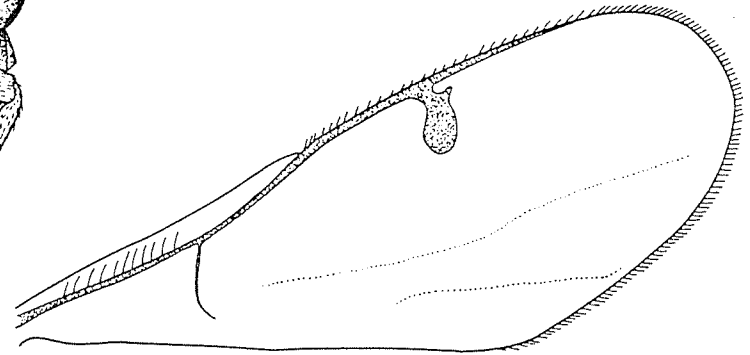
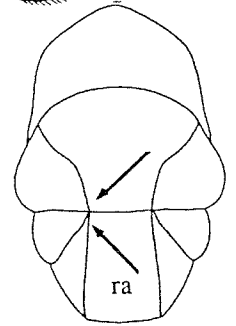
Monodontomerinae



Toryminae

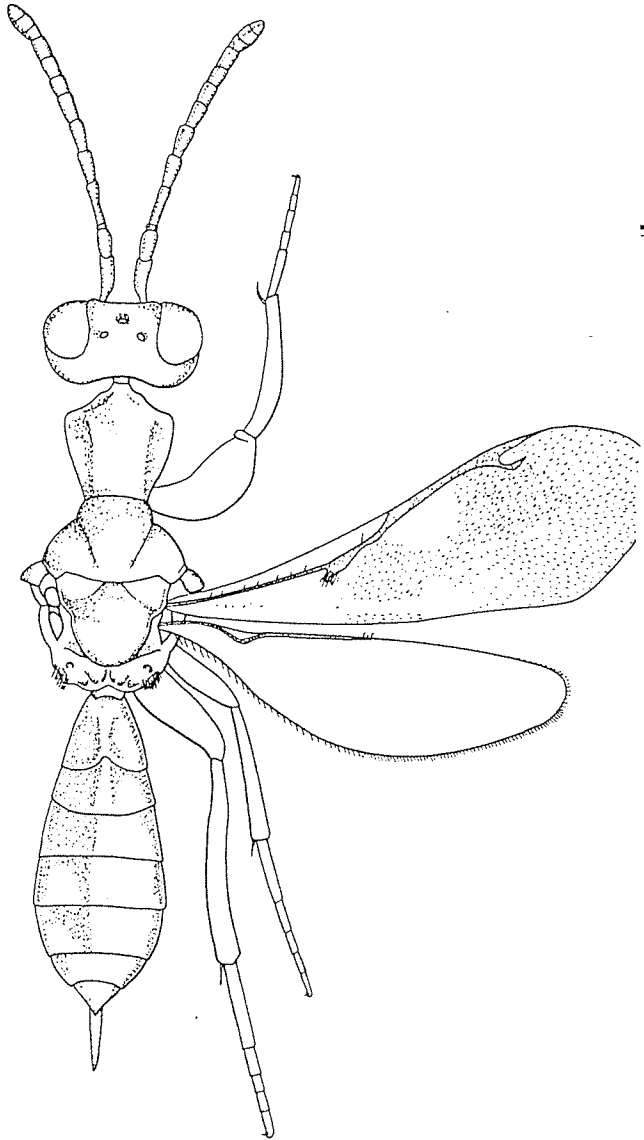
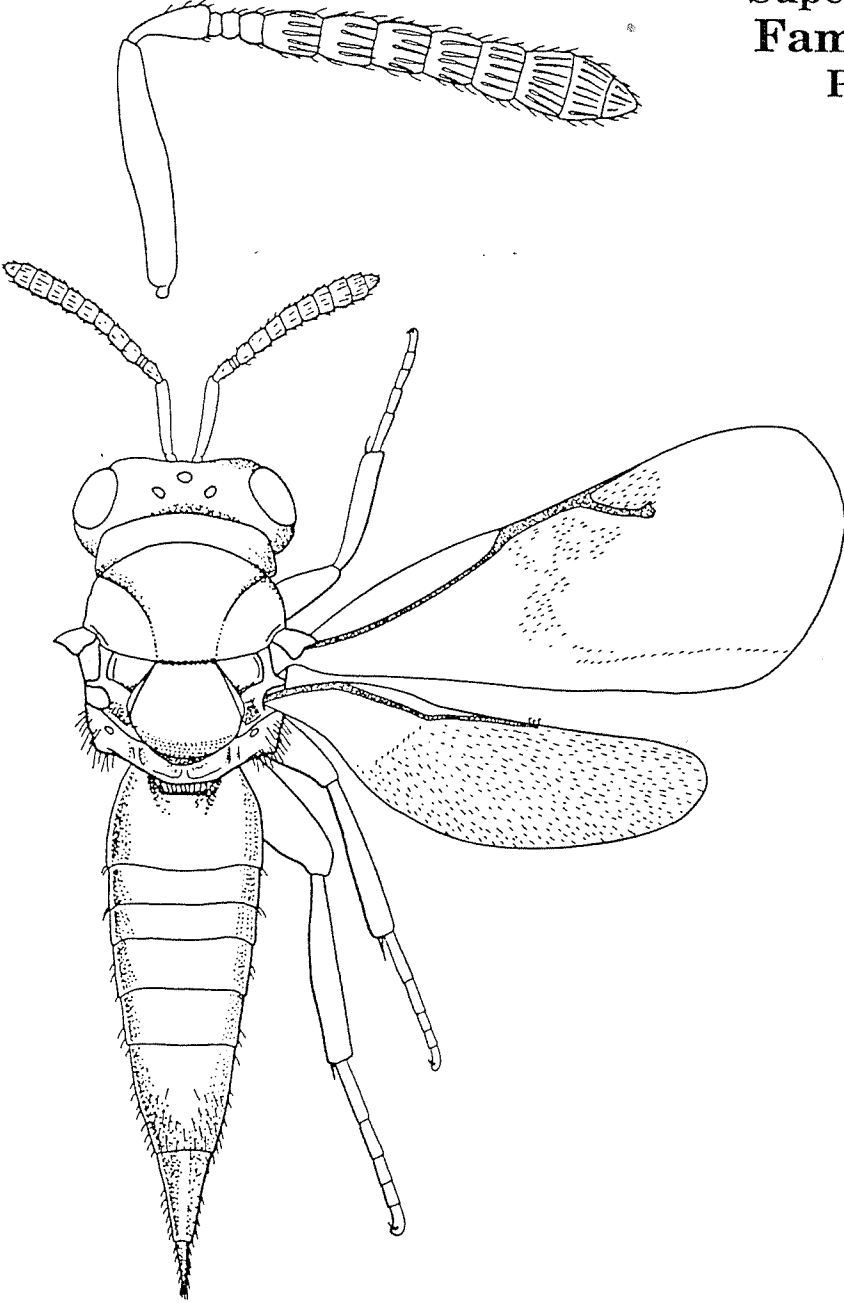


Sycophaginae: Torymidae



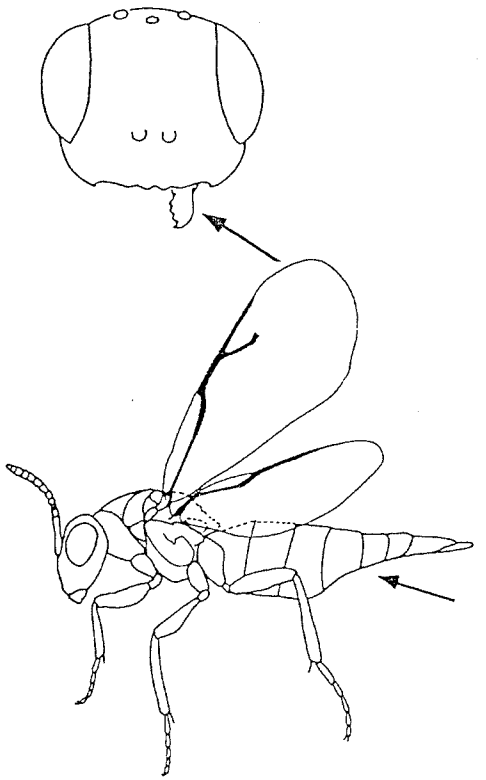
Megastigminae: Torymidae

HYMENOPTERA: Apocrita
Superfamily Chalcidoidea
Family Pteromalidae
Pteromalid wasps

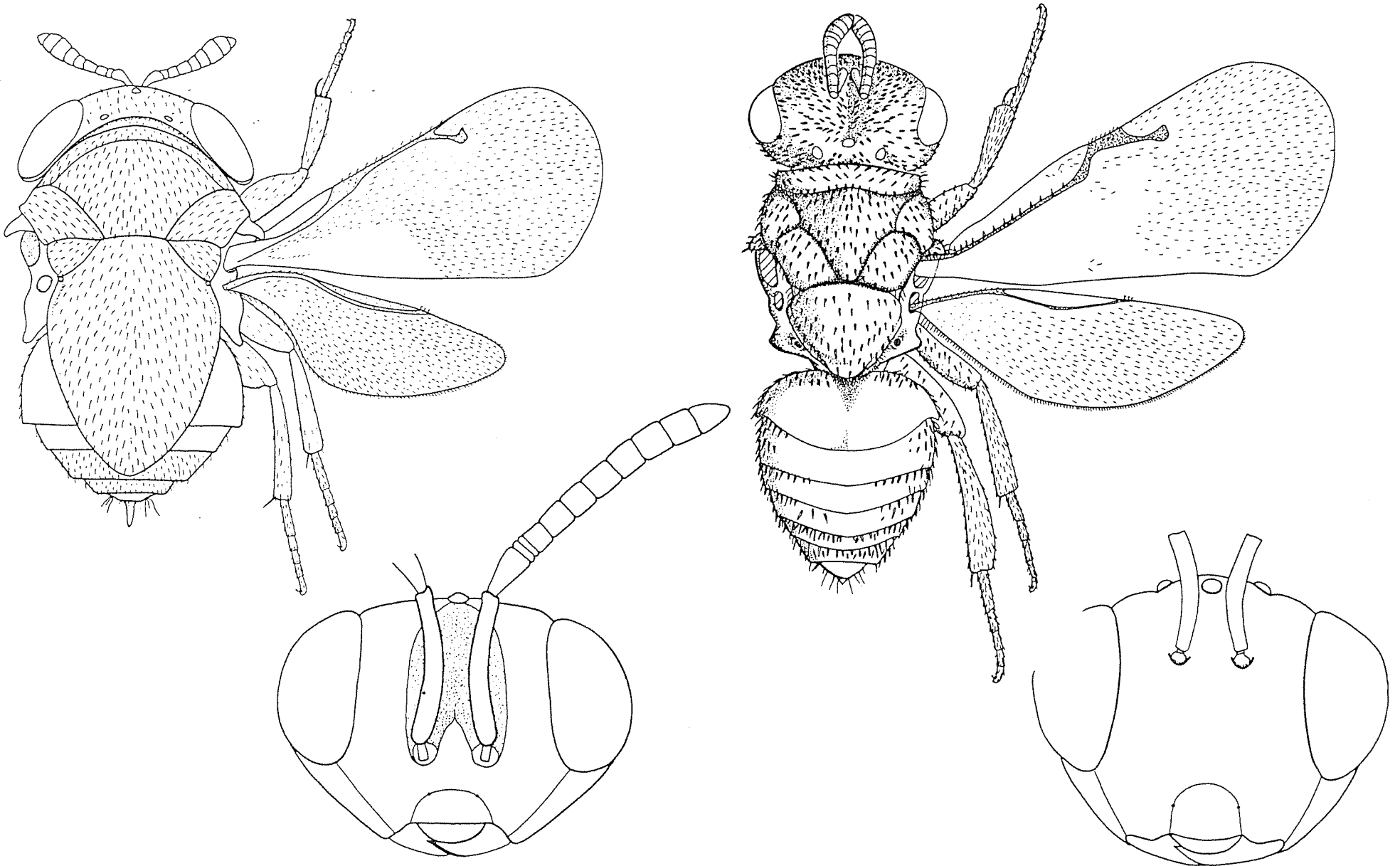


Abdomen with 3 or more readily visible terga; body usually elongate; head variable but generally with inconspicuous clypeus and small mandibles with 3 or 4 teeth.

Family Pteromalidae



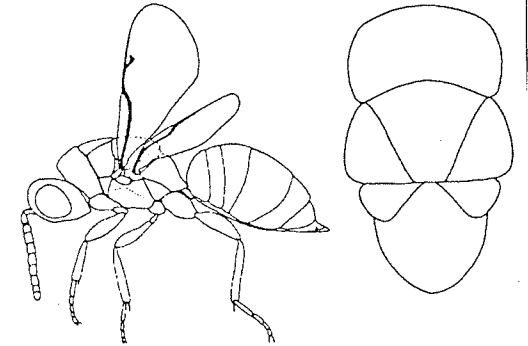
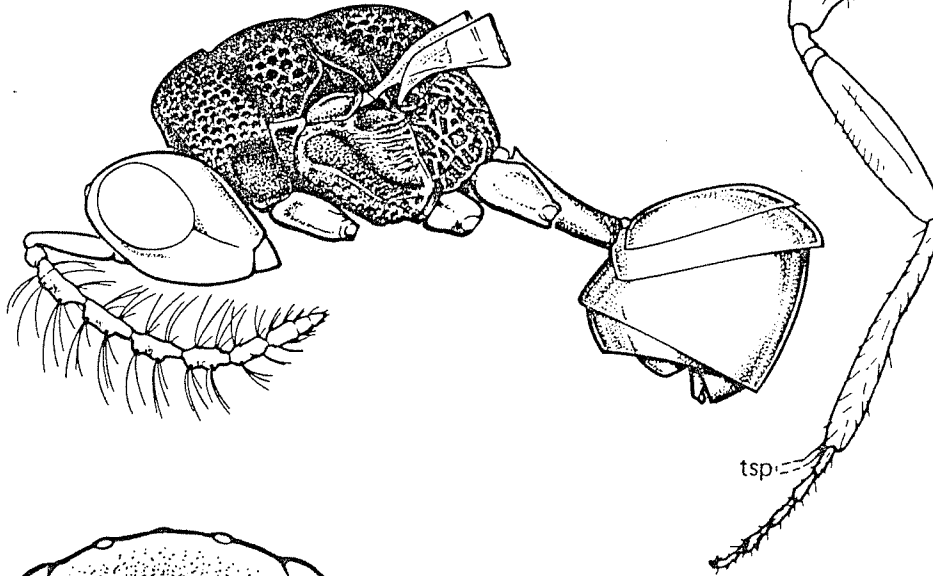
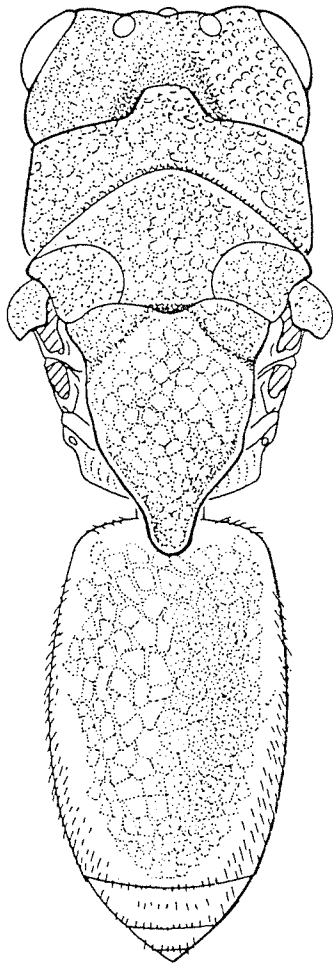
HYMENOPTERA: Apocrita
Superfamily Chalcidoidea
Family Pteromalidae
Pteromalid wasps



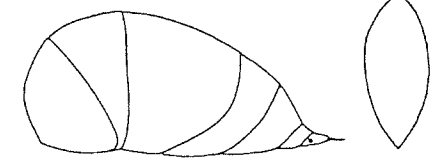
HYMENOPTERA: Apocrita
Superfamily Chalcidoidea
Family Eurytomidae
Seed chalcids

Pronotum rectangular in dorsal view, about as wide as scutum, parallel-sided, and laterally flat; body black, yellow, or mixed black and yellow, but rarely metallic (and then only faintly); abdomen usually oval in crossview and laterally compressed.

Family Eurytomidae

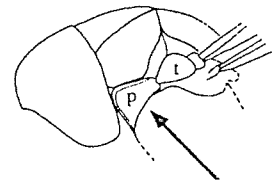


cross section

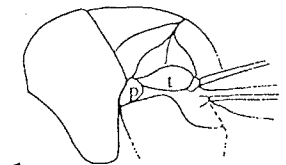


Prepectus (p) as large or larger than tegula (t).

Eurytominae

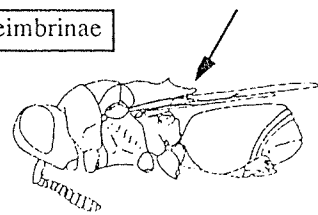


Prepectus smaller than tegula.



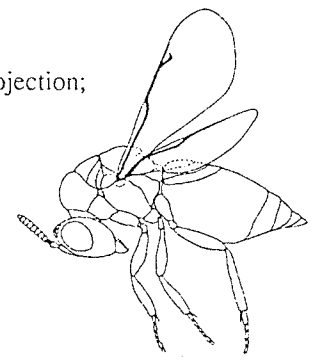
Scutellum with projection; tegula sculptured

Heimbrinae



Scutellum without projection; tegula smooth

Rileyinae



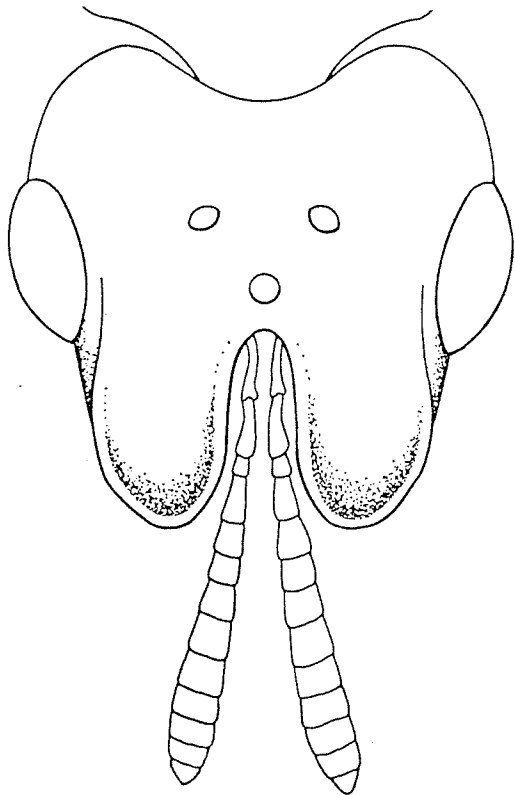
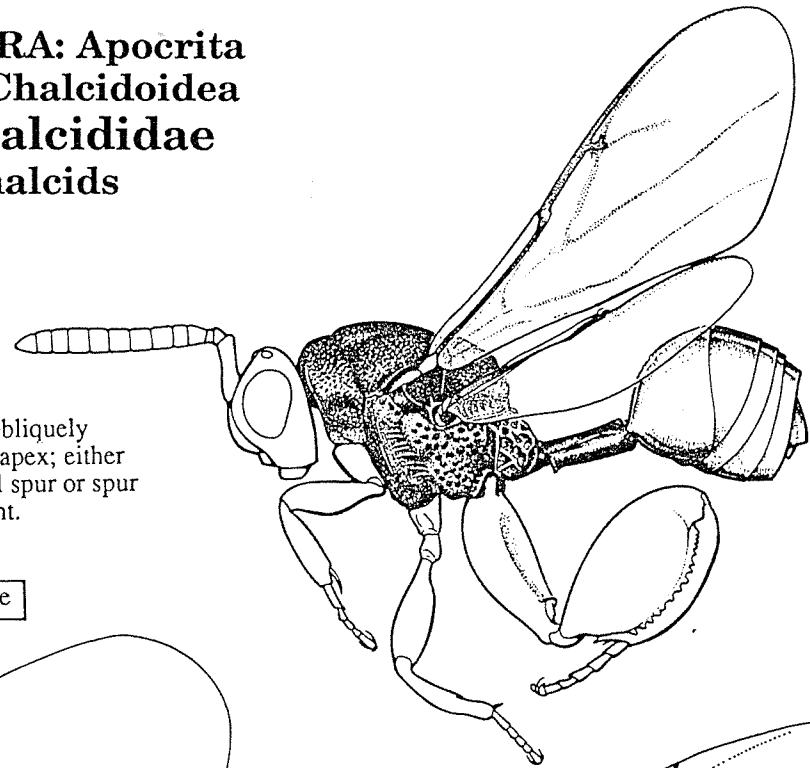
HYMENOPTERA: Apocrita
Superfamily Chalcidoidea
Family Chalcididae
True chalcids

Ovipositor directed horizontally (in most species not extended beyond apex of metasoma (gaster)); tegula a nearly oval disc; forewing not folded longitudinally.

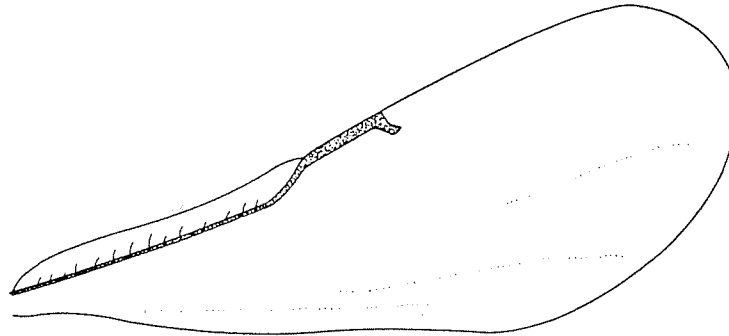
Family Chalcididae

Hindtibia obliquely truncate at apex; either 1 hindtibial spur or spur not apparent.

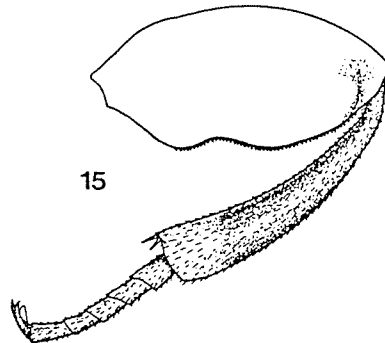
Chalcidinae



subfamily 4 Dirhininae

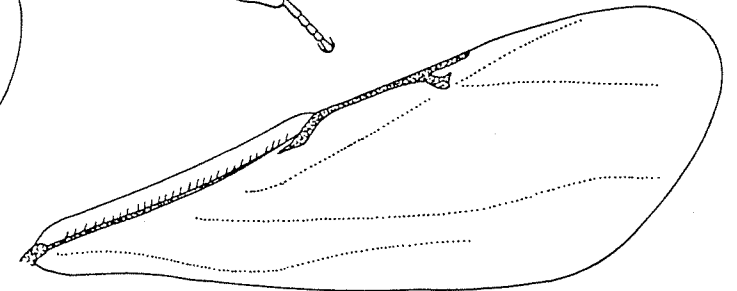


14

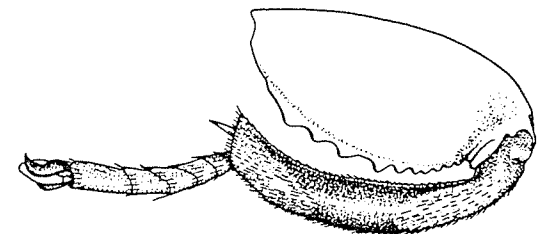


15

subfamily 3 Haltichellinae

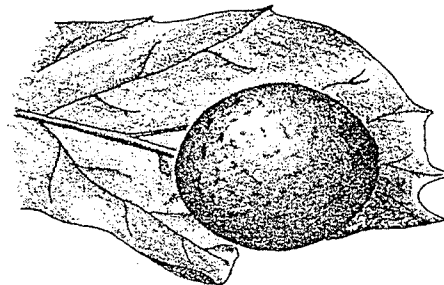
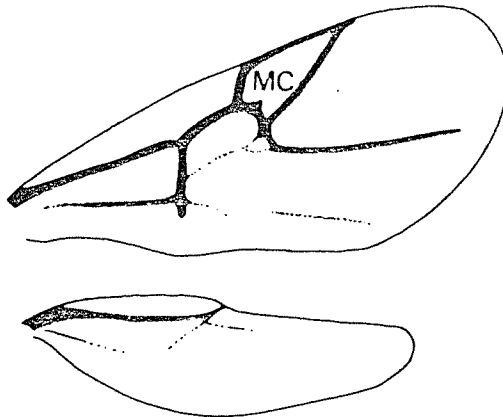
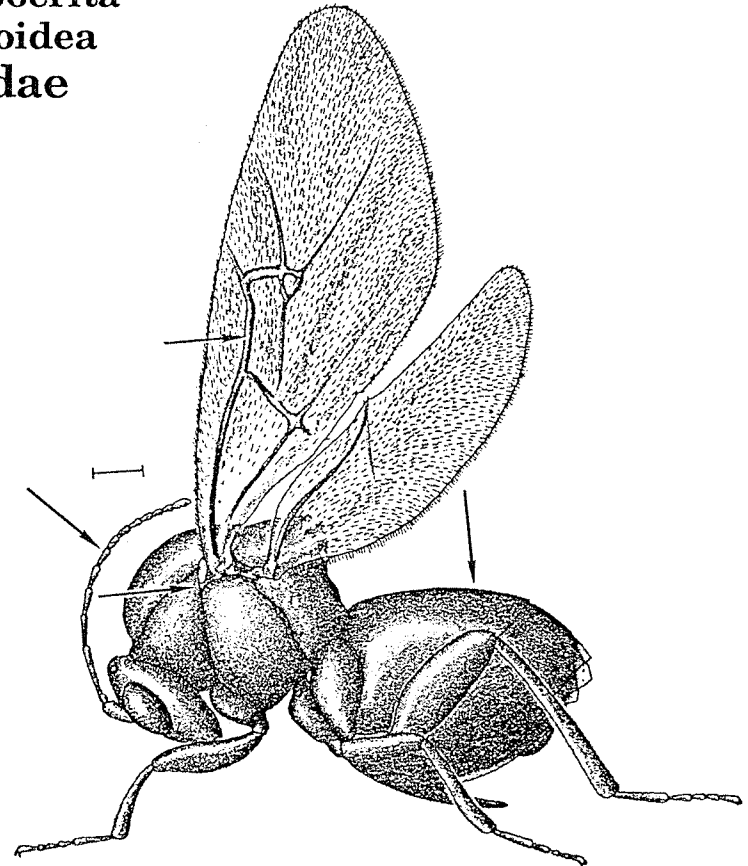
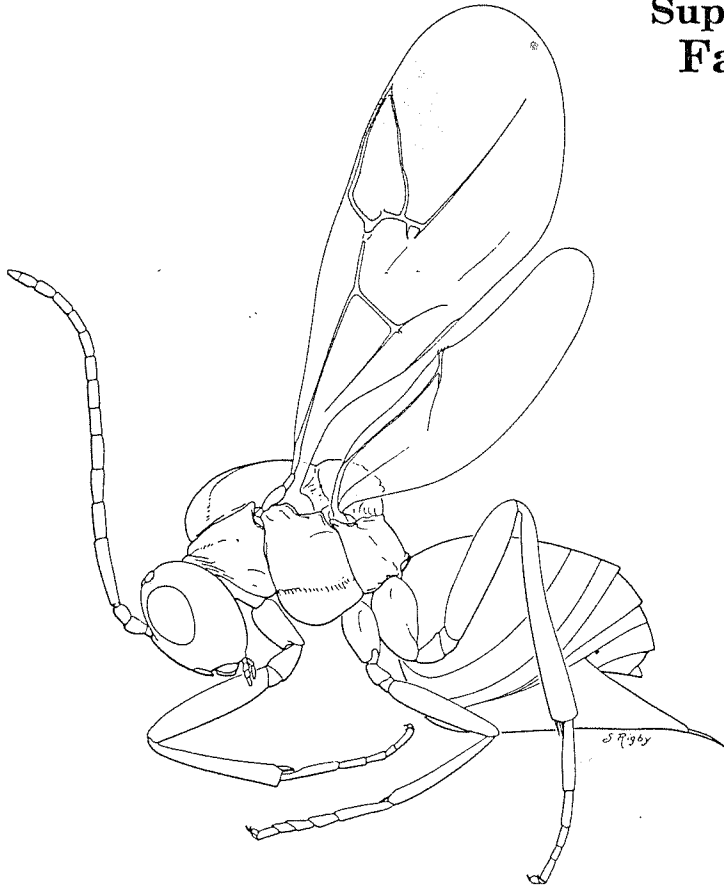


11

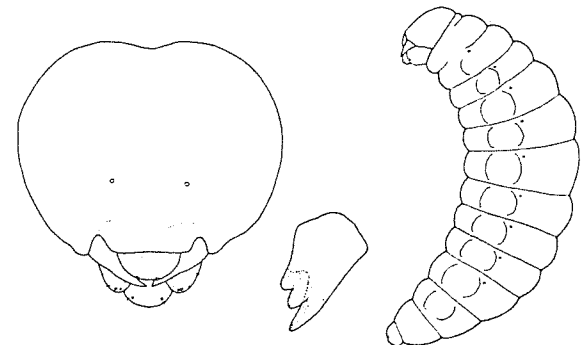


subfamily 2 Brachymeriinae

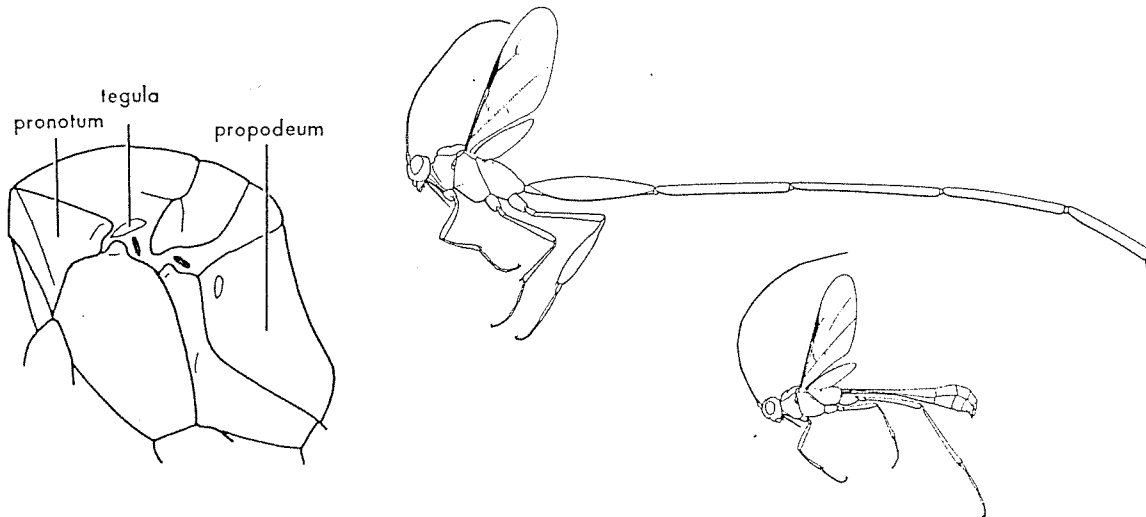
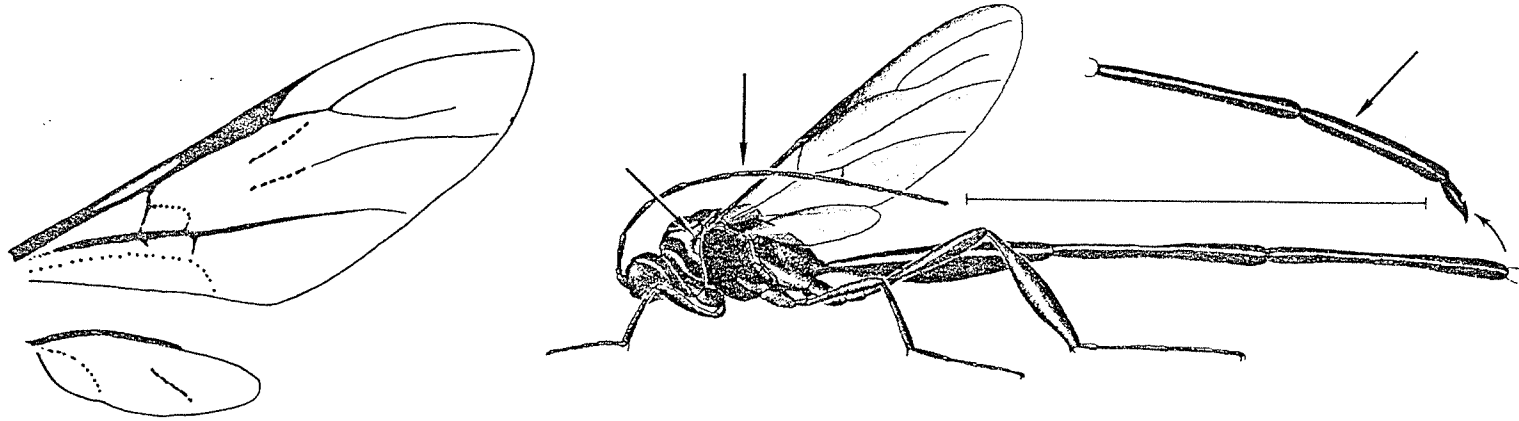
HYMENOPTERA: Apocrita
Superfamily Cynipoidea
Family Cynipidae
Gall wasps



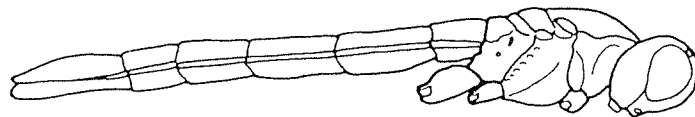
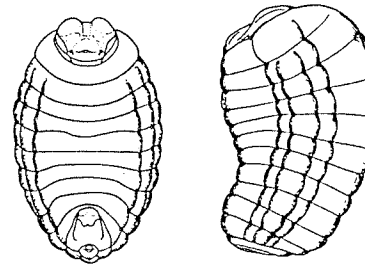
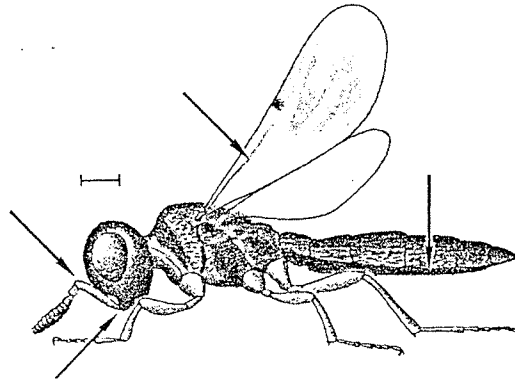
Oak apple gall
made by Gall Wasp



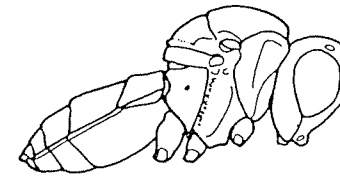
HYMENOPTERA: Apocrita
Superfamily Proctotrupoidea
Family Pelecinidae
Pelecinid wasps



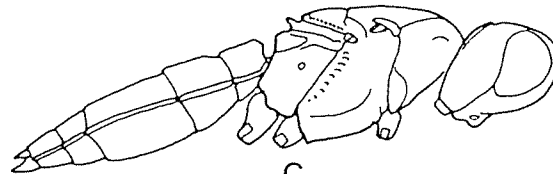
HYMENOPTERA: Apocrita
Superfamily Proctotrupoidea
Family Scelionidae
Scelionid wasps



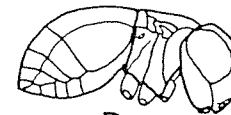
A



B



C



D