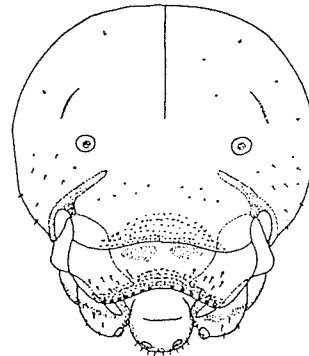
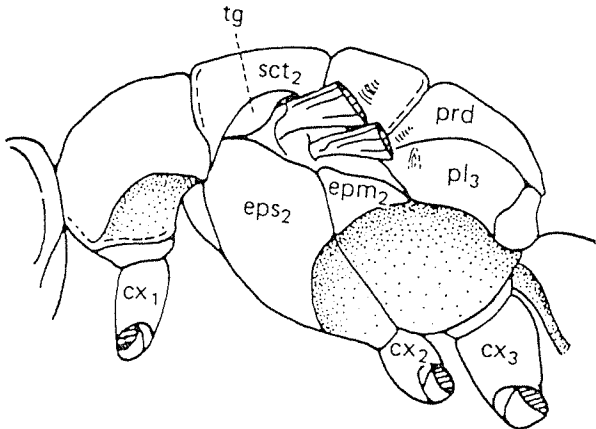
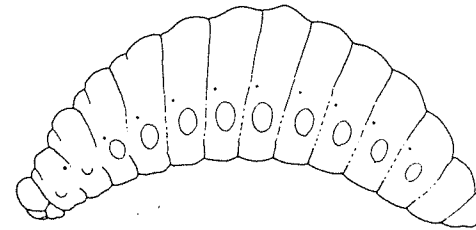
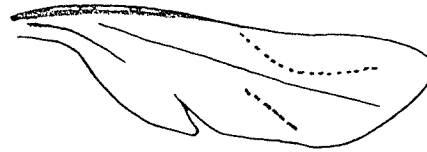
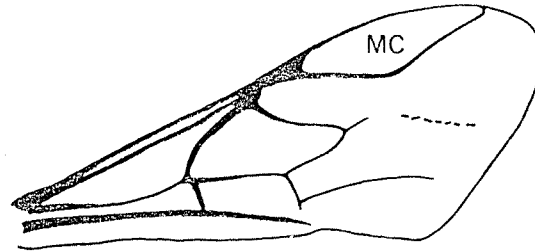
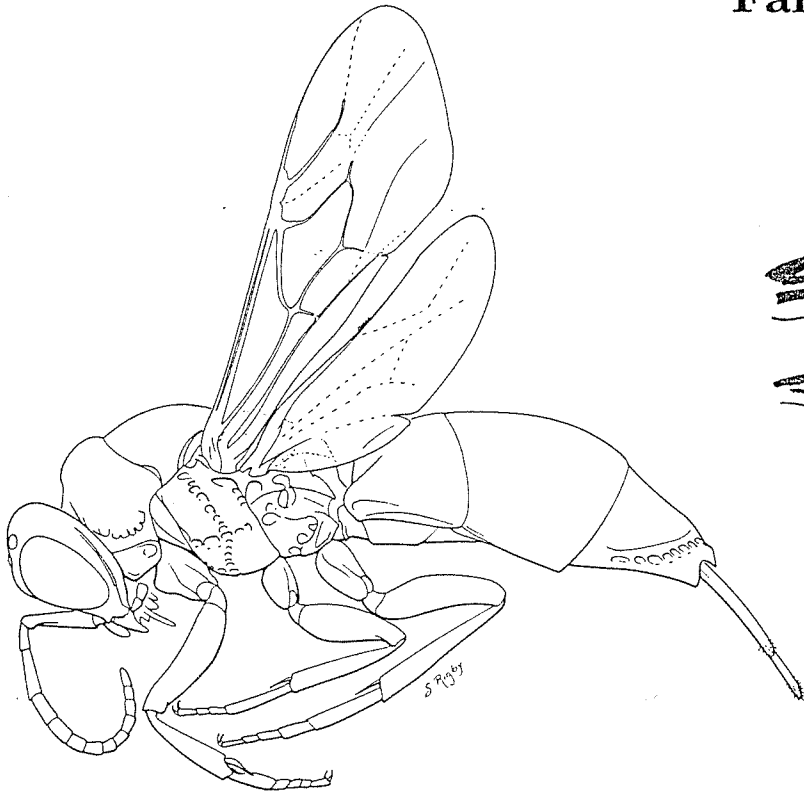
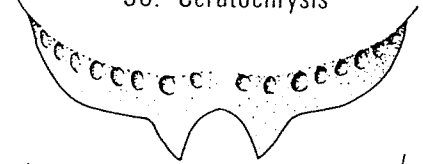


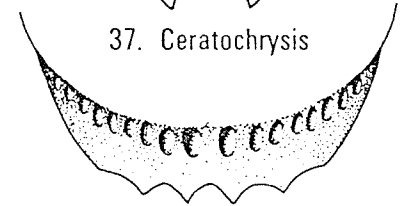
**HYMENOPTERA: Apocrita**  
**Superfamily Chryridoidea**  
**Family Chrysididae**  
**Cuckoo wasps**



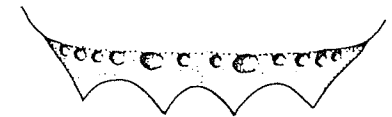
36. *Ceratochrysis*



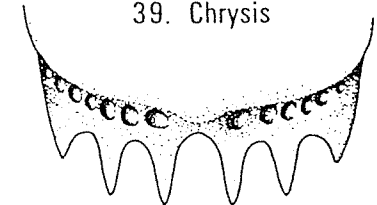
37. *Ceratochrysis*



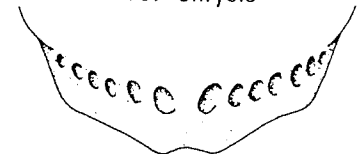
38. *Neochrysis*



39. *Chrysis*

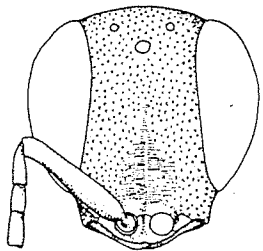


40. *Chrysis*

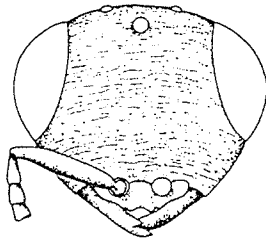


41. *Chrysis* ♂

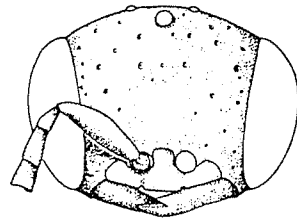
**HYMENOPTERA: Apocrita**  
**Superfamily Chrysoidea**  
**Family Chrysididae**  
**Cuckoo wasps**



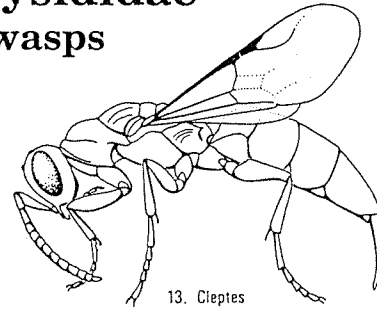
1. Mesitopterus



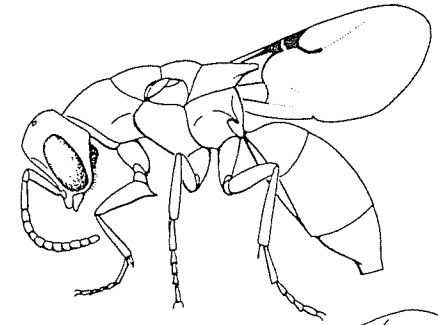
2. Microchridium



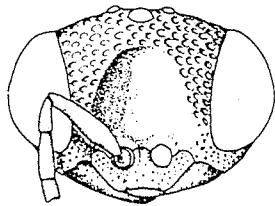
3. Xerochrum



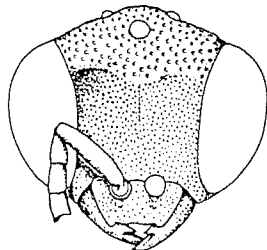
13. Cleptes



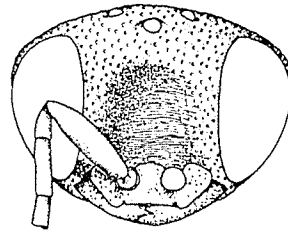
14. Elampus



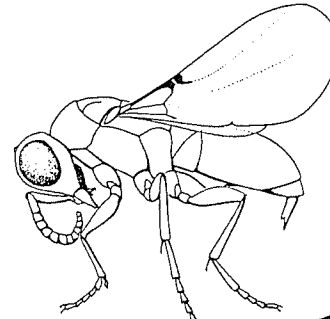
4. Omalus



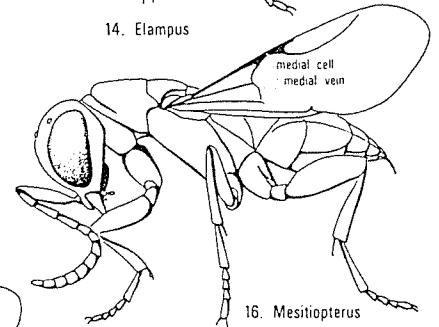
5. Hedychreides



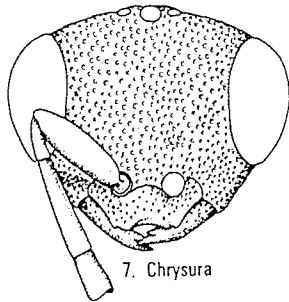
6. Holopyga



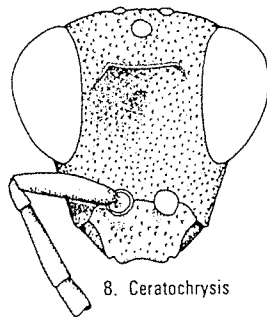
15. Microchridium



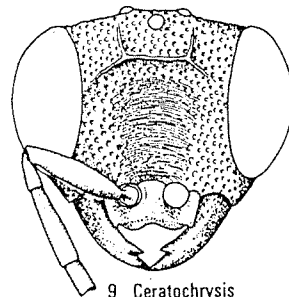
16. Mesitopterus



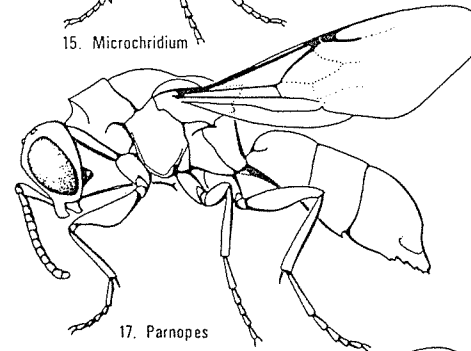
7. Chrysura



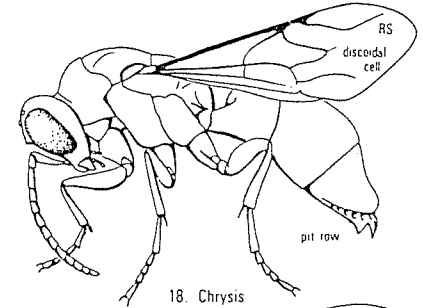
8. Ceratochrysis



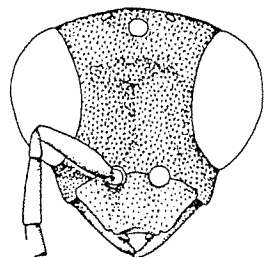
9. Ceratochrysis



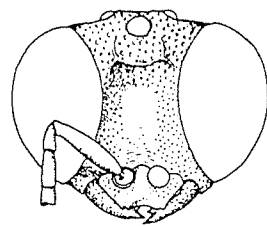
17. Parnopes



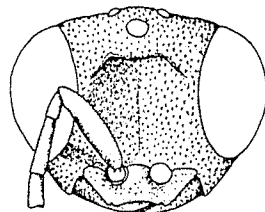
18. Chrysis



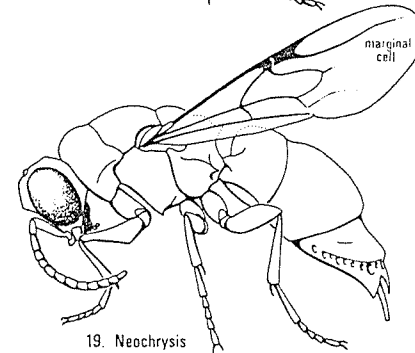
10. Chysurissa



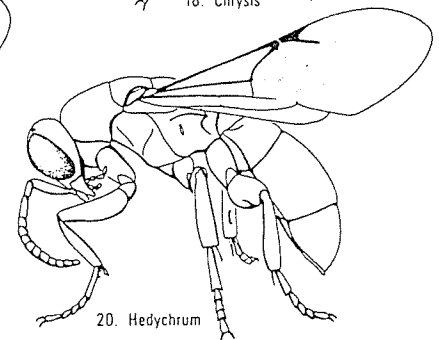
11. Spintharosoma



12. Chrysis

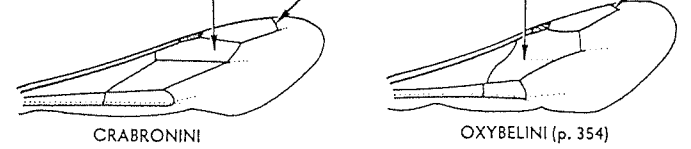
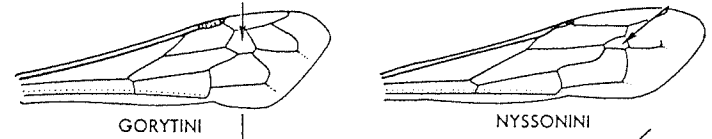
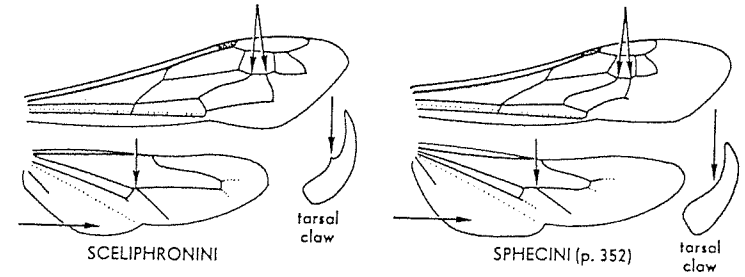
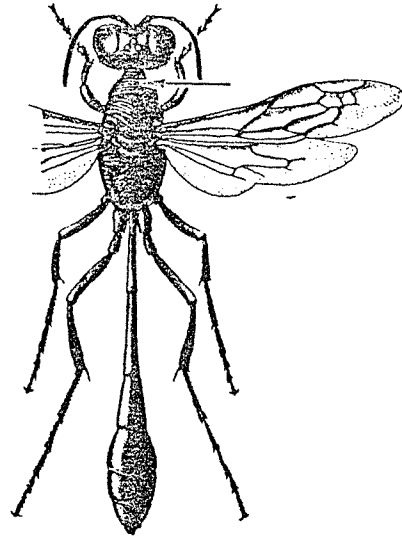
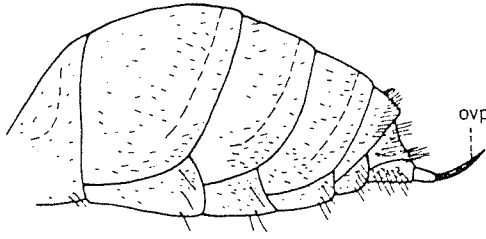
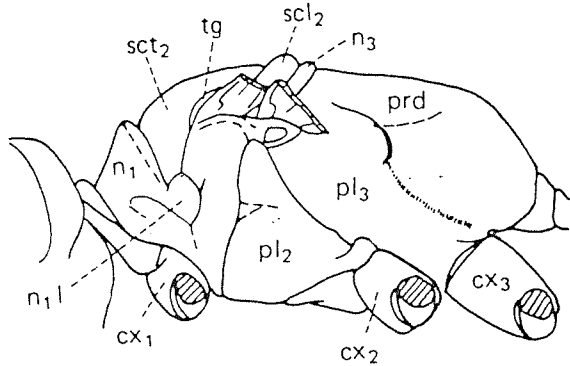


19. Neochrysis

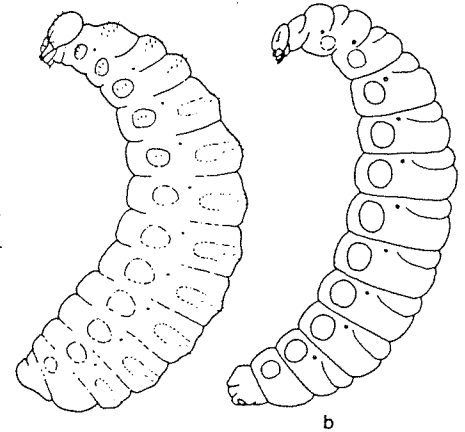
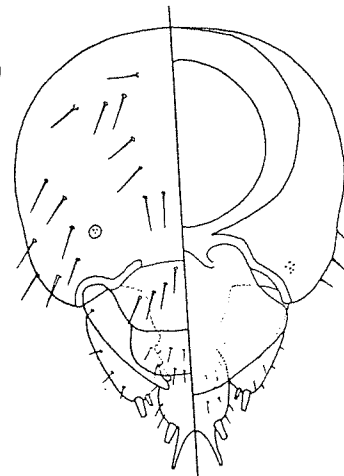
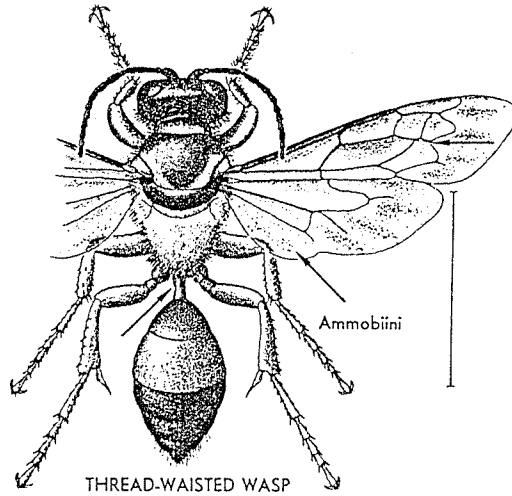
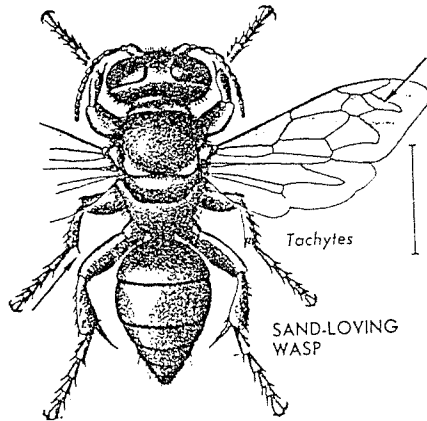


20. Hedychrum

**HYMENOPTERA: Apocrita**  
**Superfamily Sphecoidea**  
**Family Sphecidae**  
**Sphecid wasps**



CHARACTERS OF SPHECID WASPS



**HYMENOPTERA: Apocrita**  
**Superfamily Apoidea**  
**Family Colletidae**  
**Yellow-faced bees**

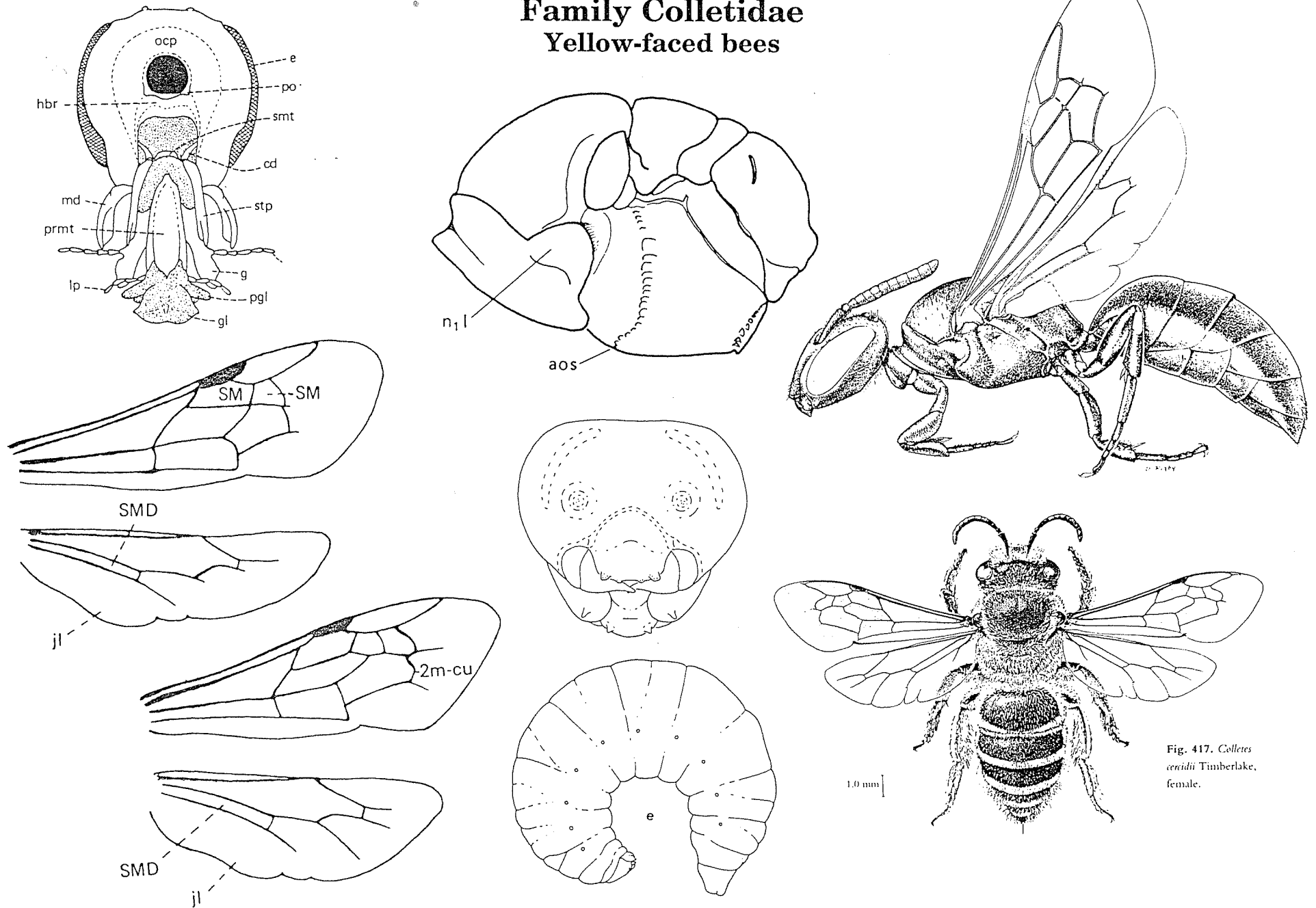


Fig. 417. *Colletes ceradii* Timberlake, female.

**HYMENOPTERA: Apocrita**  
**Superfamily Apoidea**  
**Family Halictidae**  
**Sweat bees**

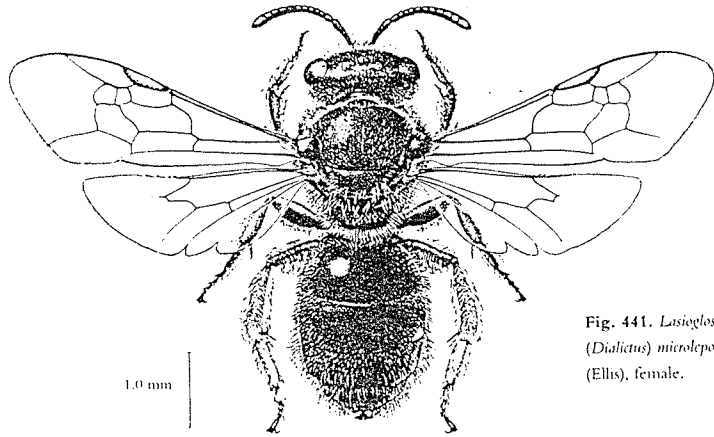


Fig. 441. *Lasioglossum*  
(*Dialictus*) *microlepidoides*  
(Ellis), female.

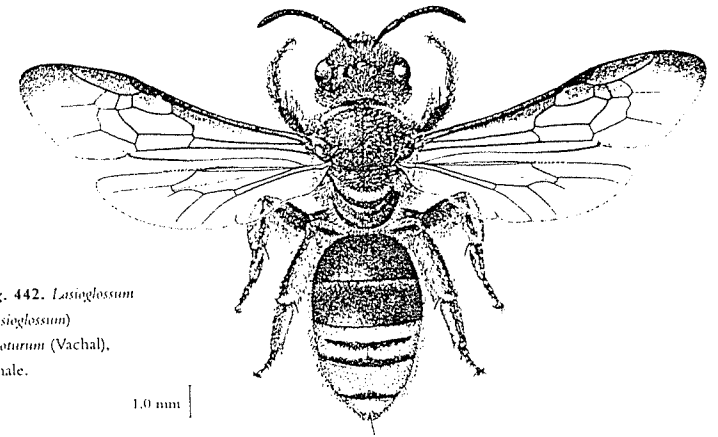
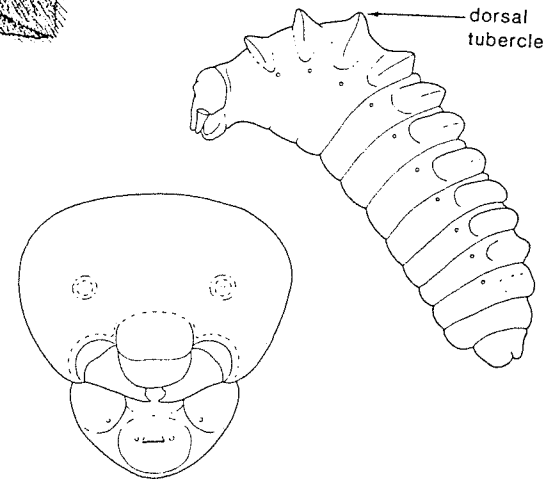
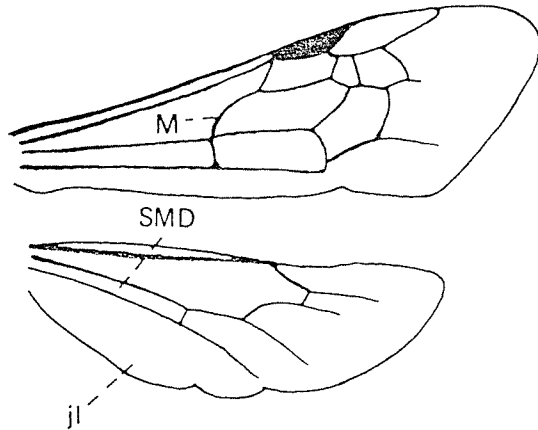
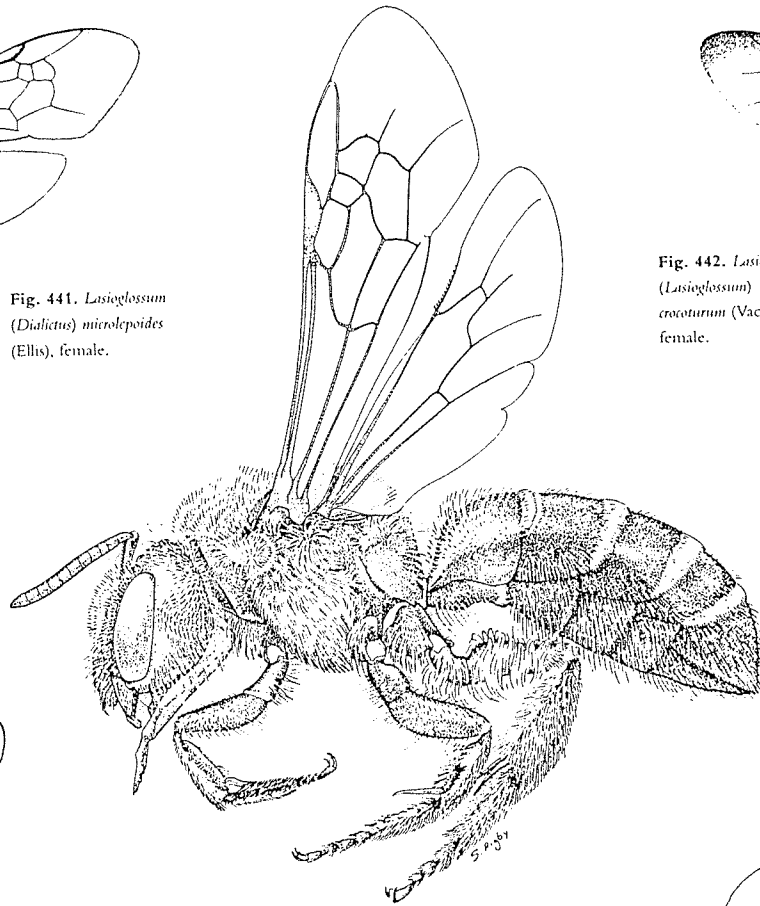
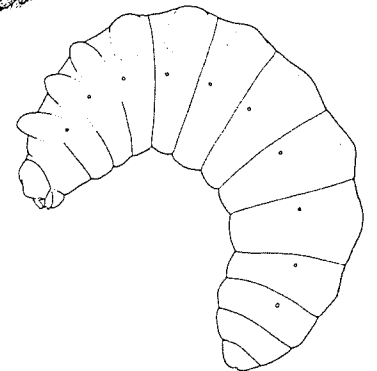
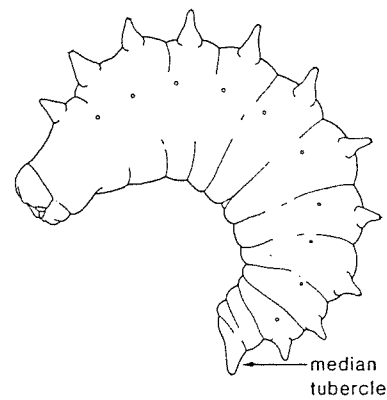
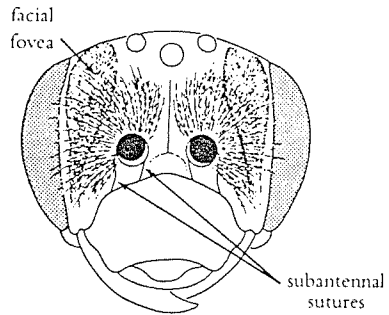
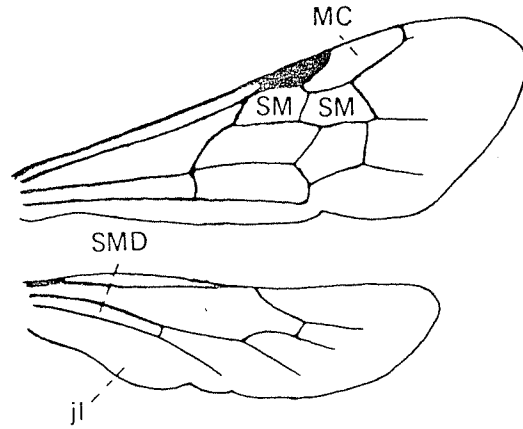
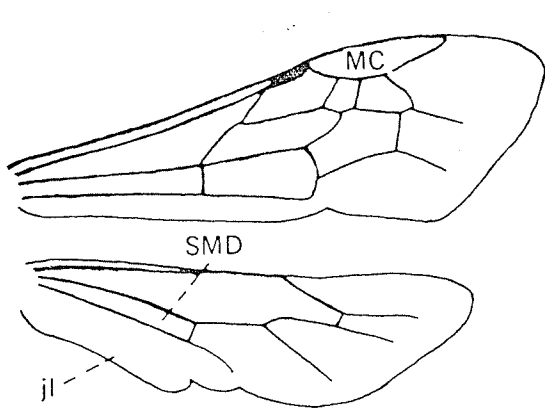


Fig. 442. *Lasioglossum*  
(*Lasioglossum*)  
*crocoturum* (Vachal),  
female.



**HYMENOPTERA: Apocrita**  
**Superfamily Apoidea**  
**Family Andrenidae**  
**Andrenid bees**



HYMENOPTERA: Apocrita  
 Superfamily Apoidea  
 Family Megachilidae  
 Leafcutting bees

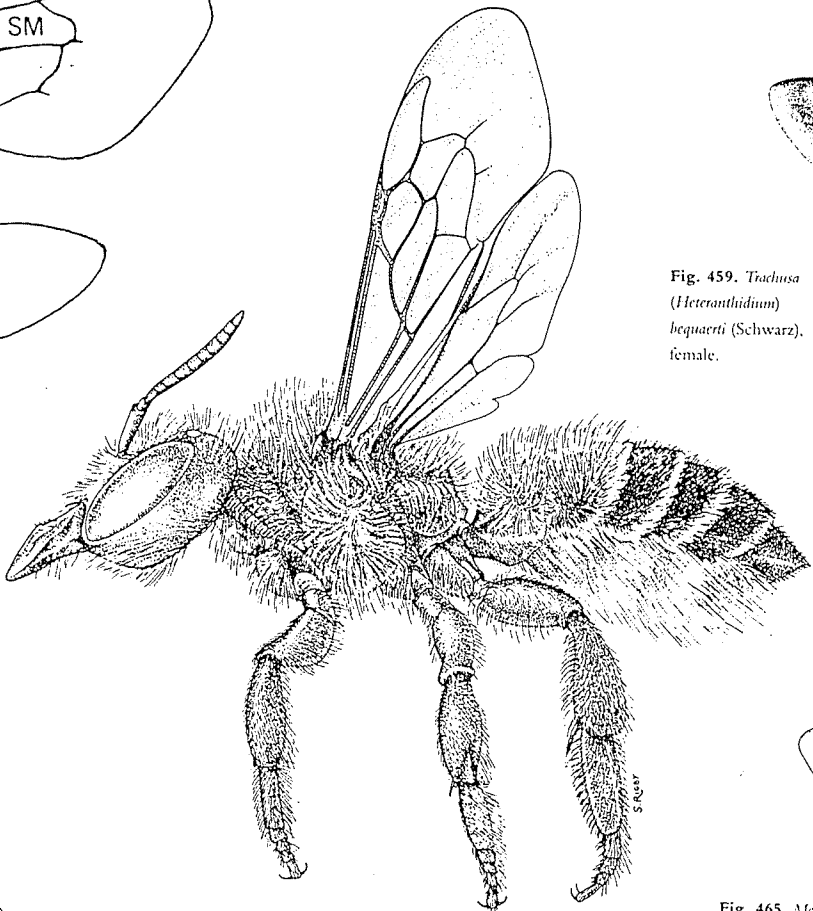
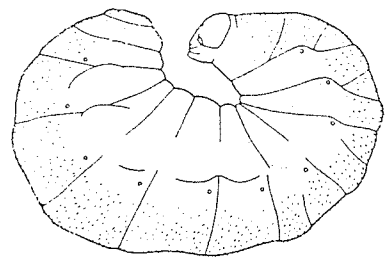
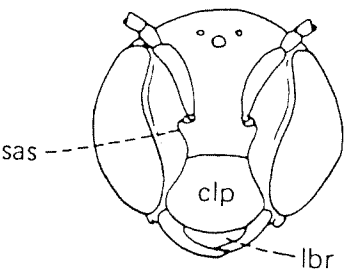
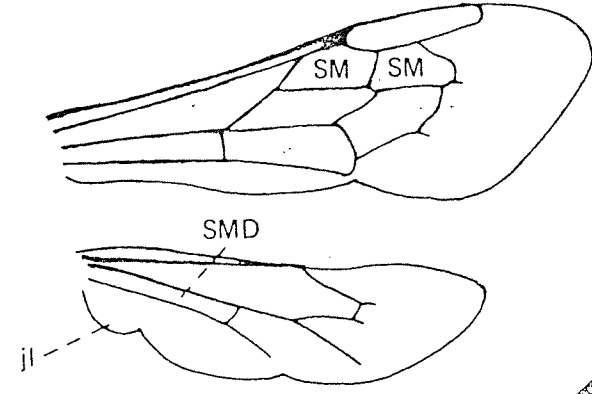


Fig. 459. *Trachusa*  
 (*Heteranthidium*)  
*bequaerti* (Schwarz),  
 female.

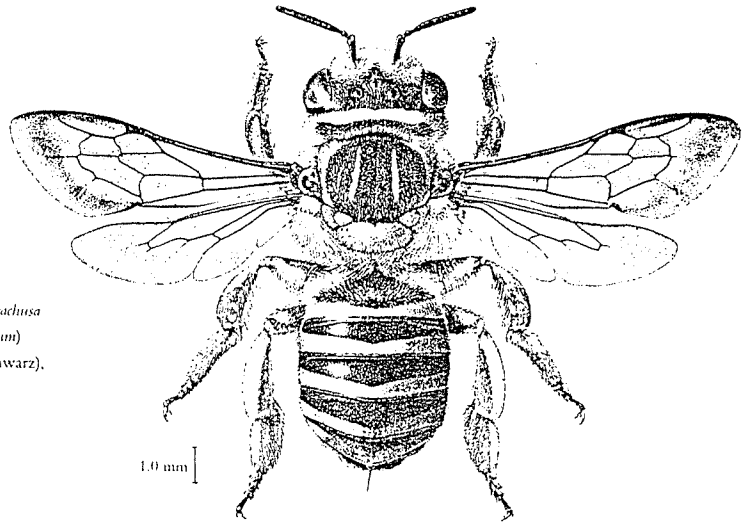
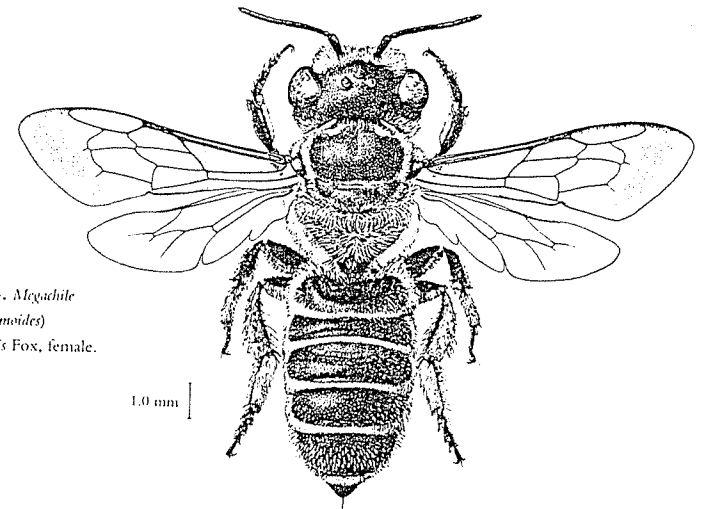
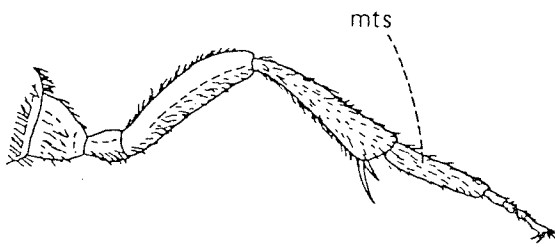
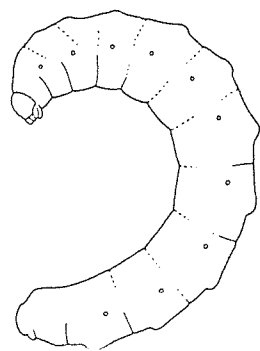
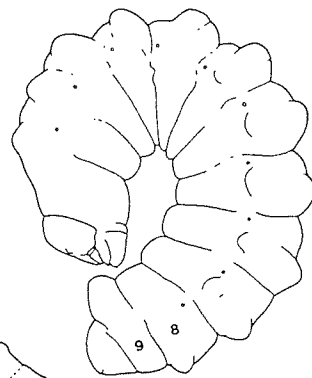
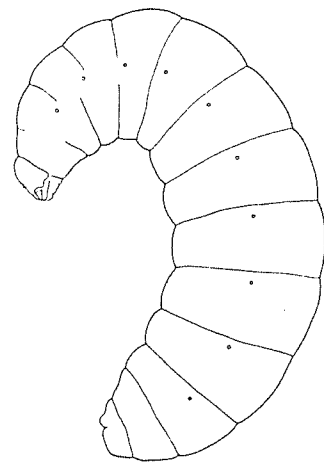
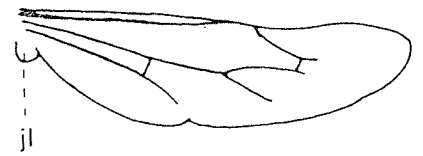
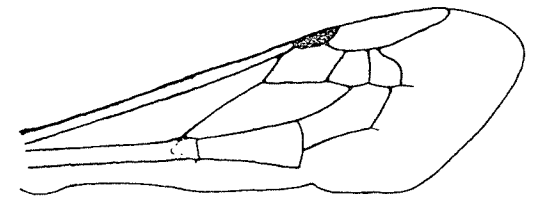
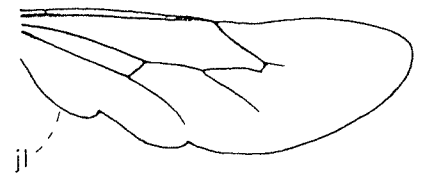
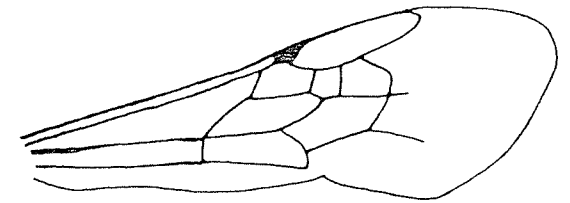
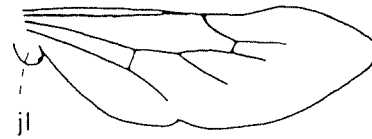
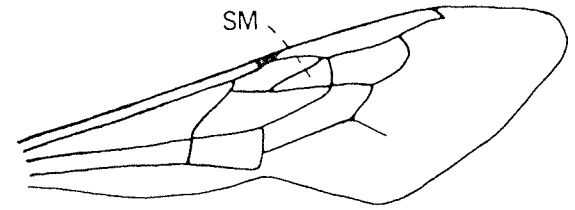
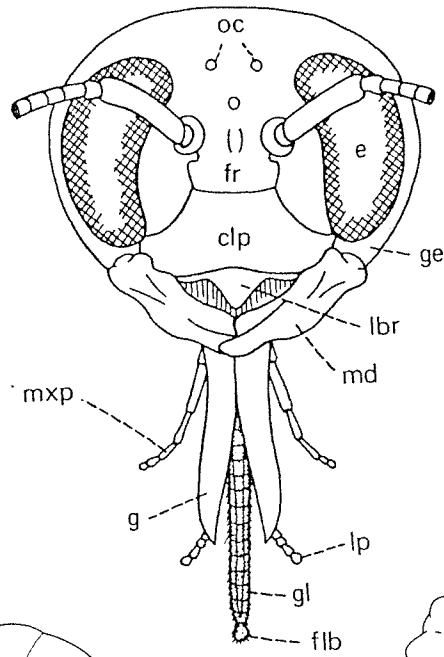
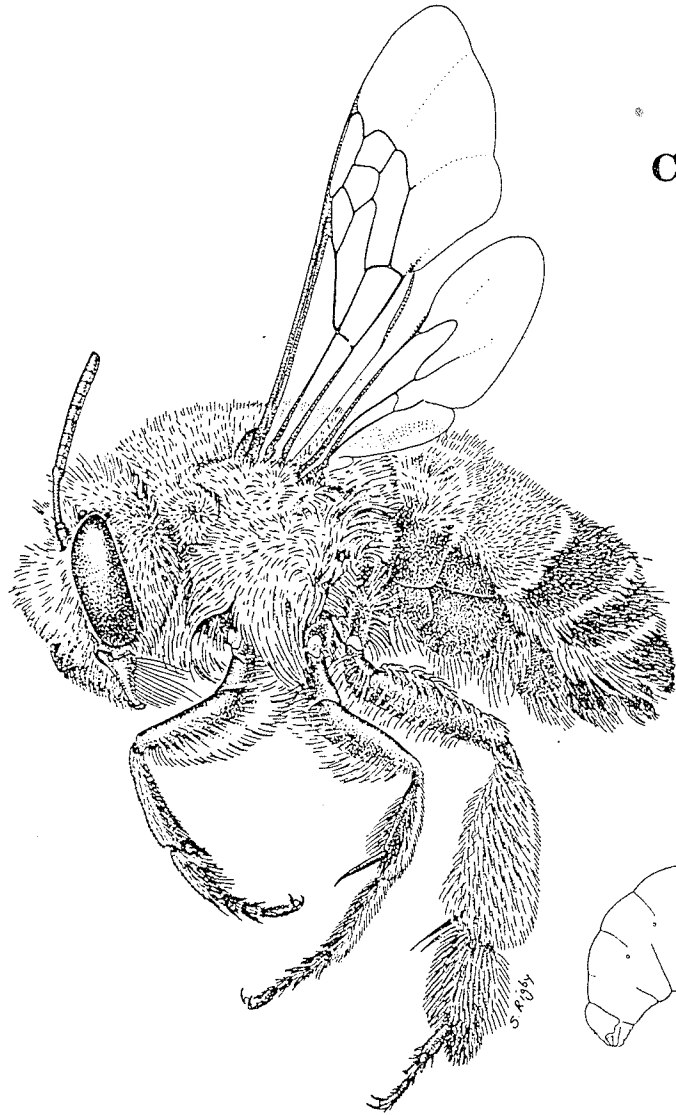


Fig. 465. *Megachile*  
 (*Chelostomoides*)  
*occidentalis* Fox, female.

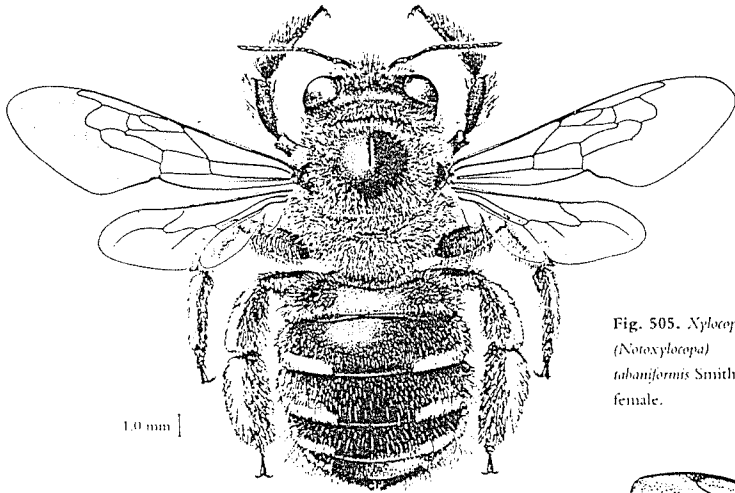


**HYMENOPTERA: Apocrita**  
**Superfamily Apoidea**  
**Family Anthophoridae**  
**Cuckoo, digger, and carpenter bees**



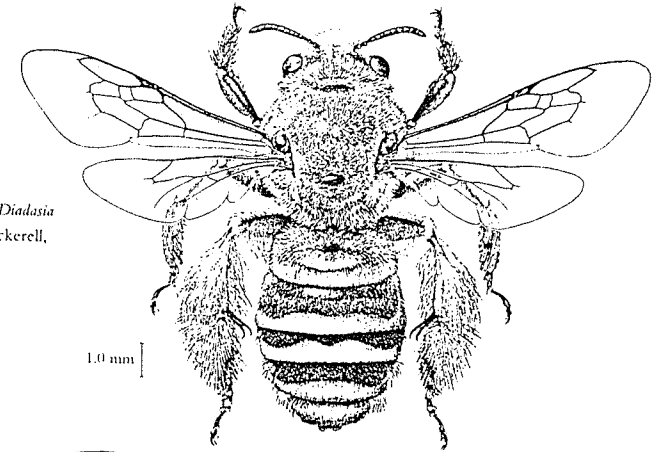


**HYMENOPTERA: Apocrita**  
**Superfamily Apoidea**  
**Family Anthophoridae**  
**Cuckoo, digger, and carpenter bees**



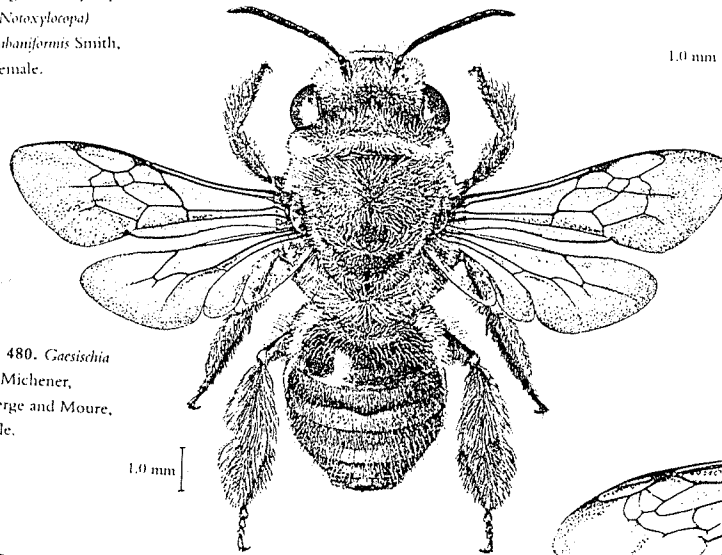
1.0 mm

Fig. 505. *Nylcopa*  
(*Notoxylcopa*)  
*tabaniformis* Smith,  
female.



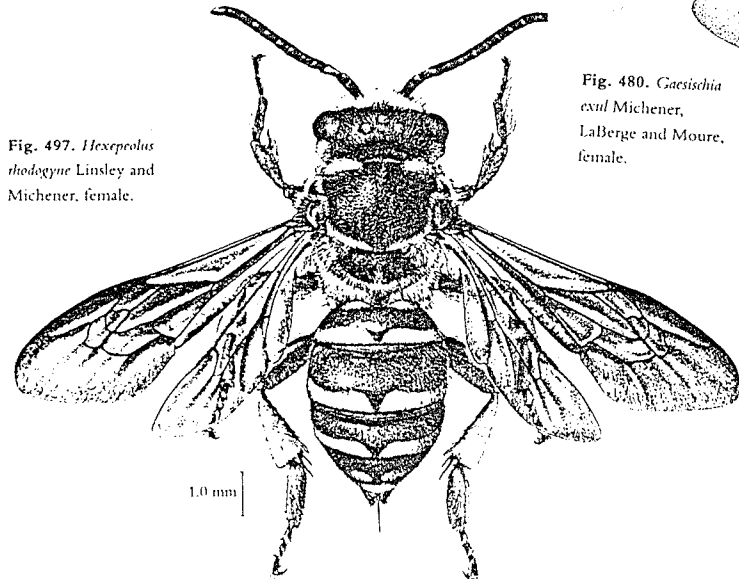
1.0 mm

Fig. 477. *Diadasia*  
*tinonis* Cockerell,  
female.



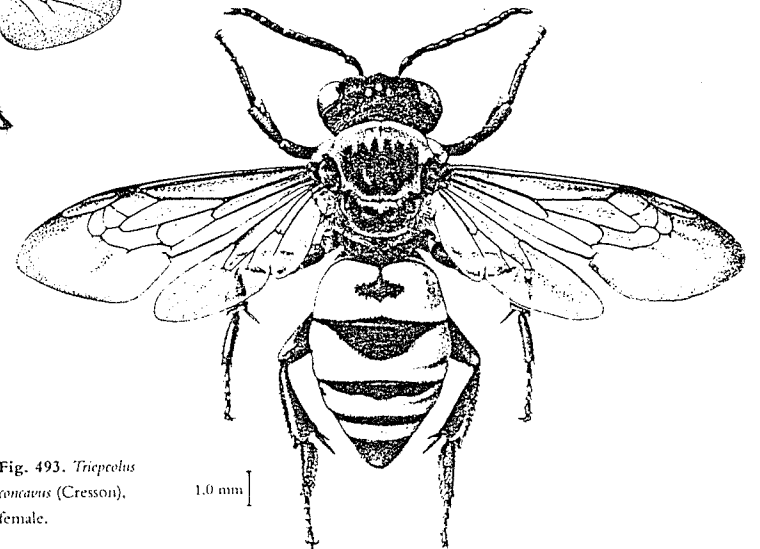
1.0 mm

Fig. 480. *Gaesischia*  
*exul* Michener,  
LaBerge and Mours,  
female.



1.0 mm

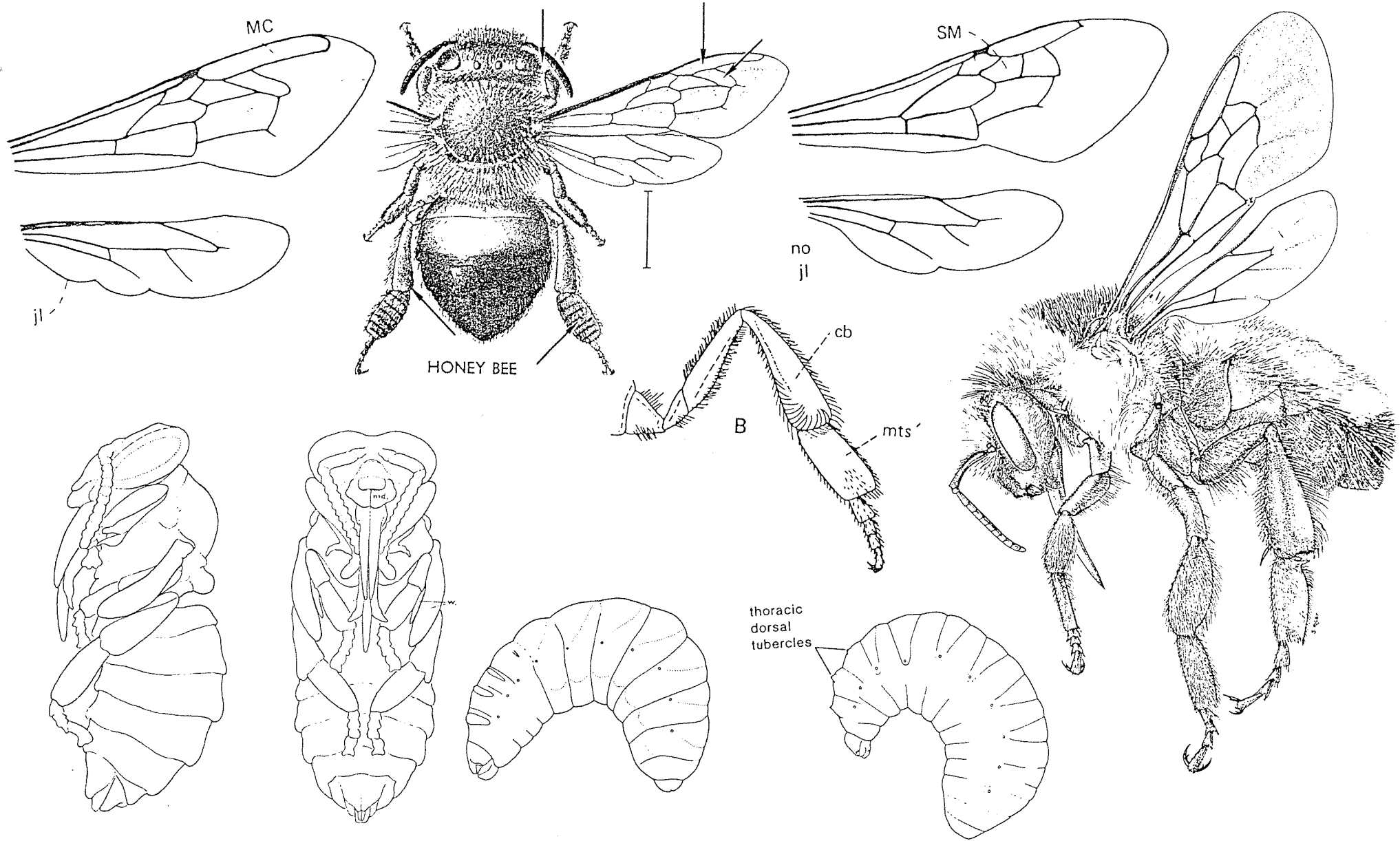
Fig. 497. *Hexepeolus*  
*rhodogyne* Linsley and  
Michener, female.



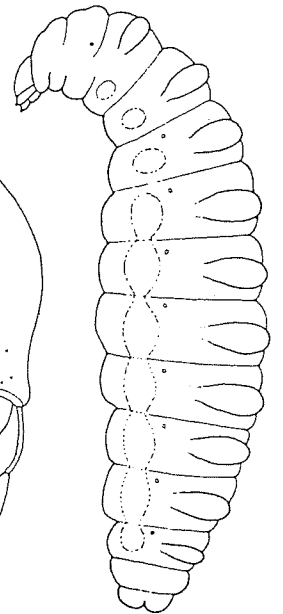
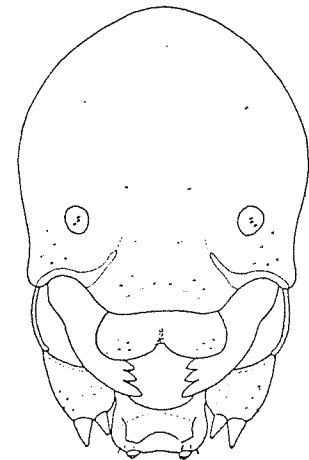
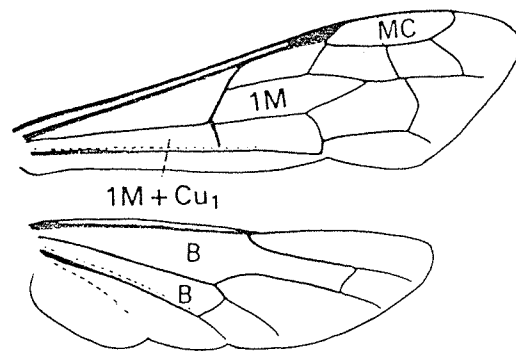
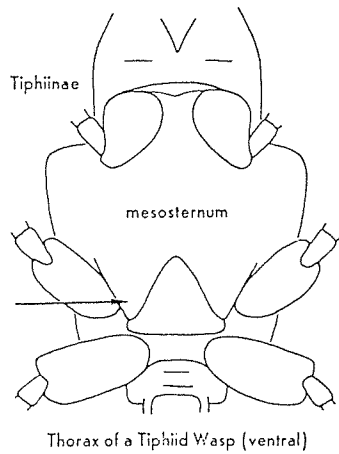
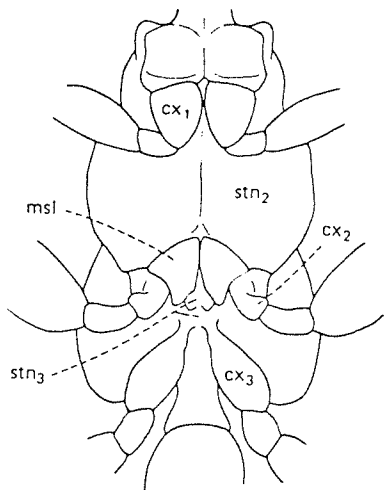
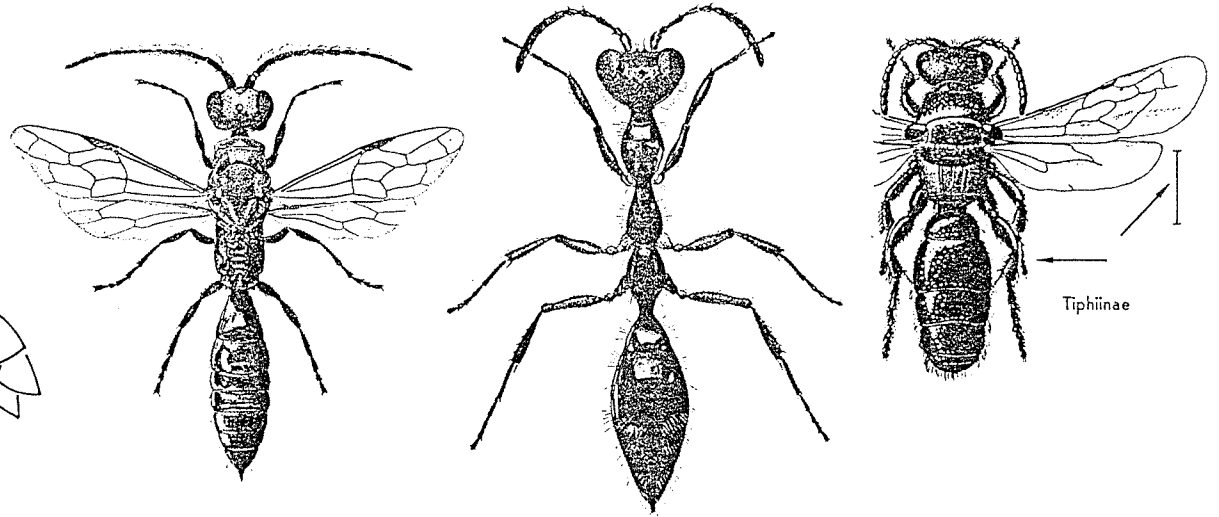
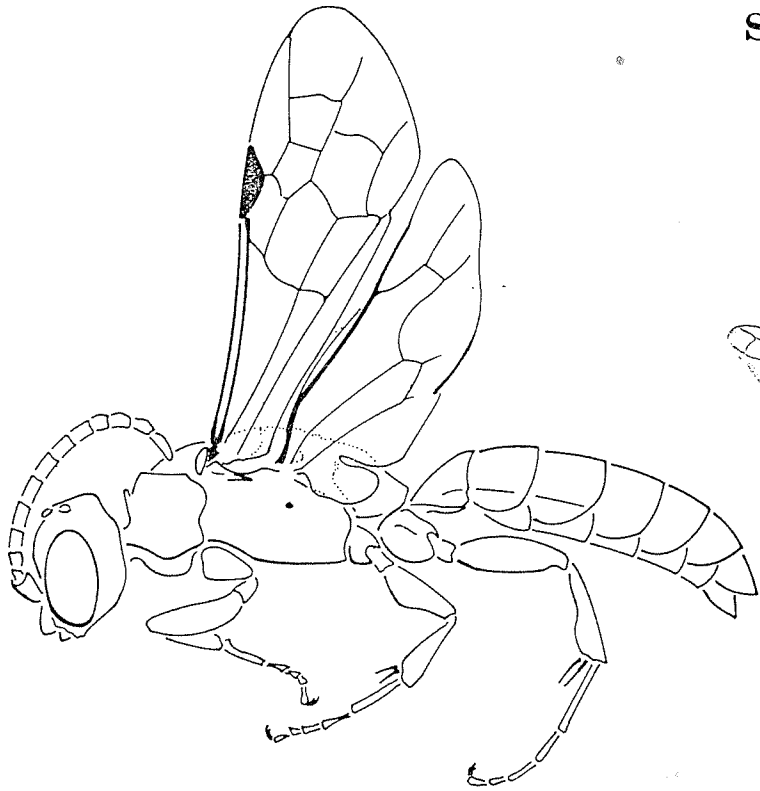
1.0 mm

Fig. 493. *Triepolus*  
*concavus* (Cresson),  
female.

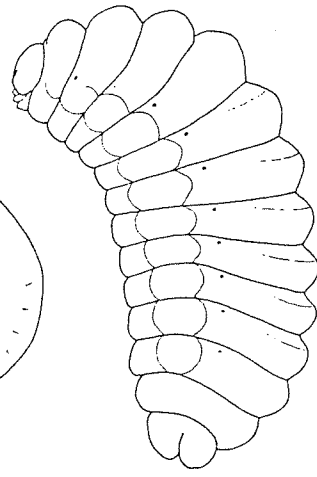
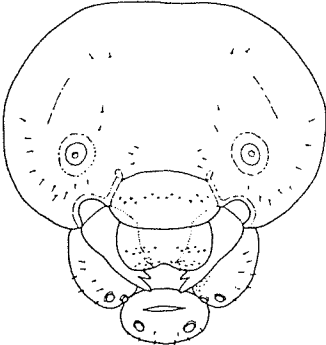
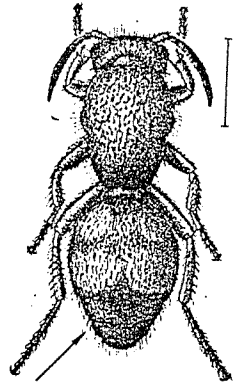
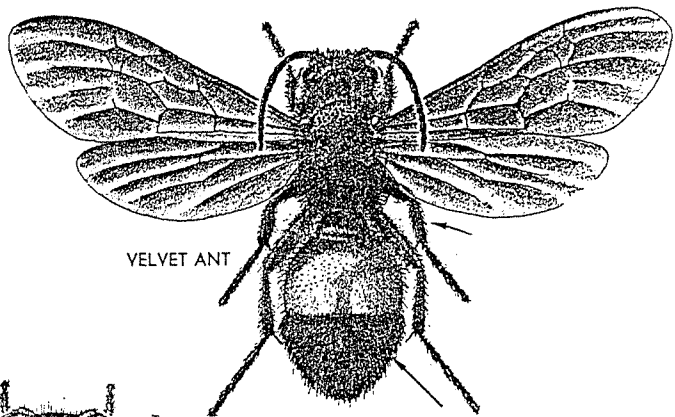
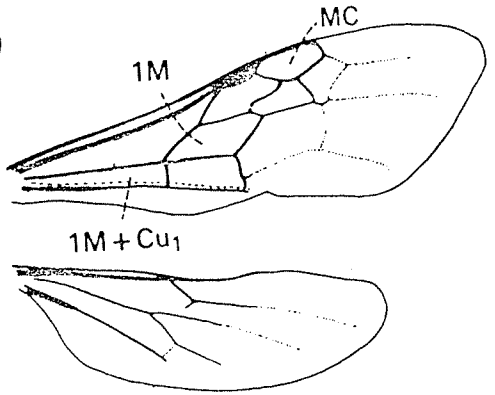
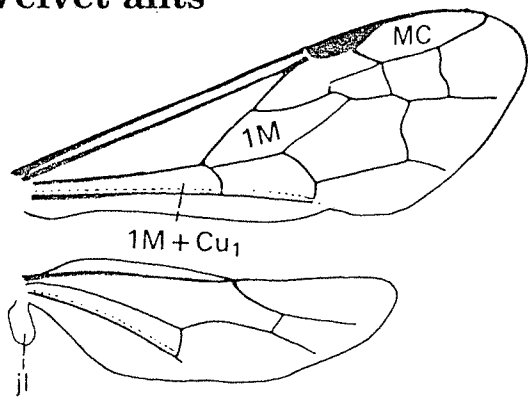
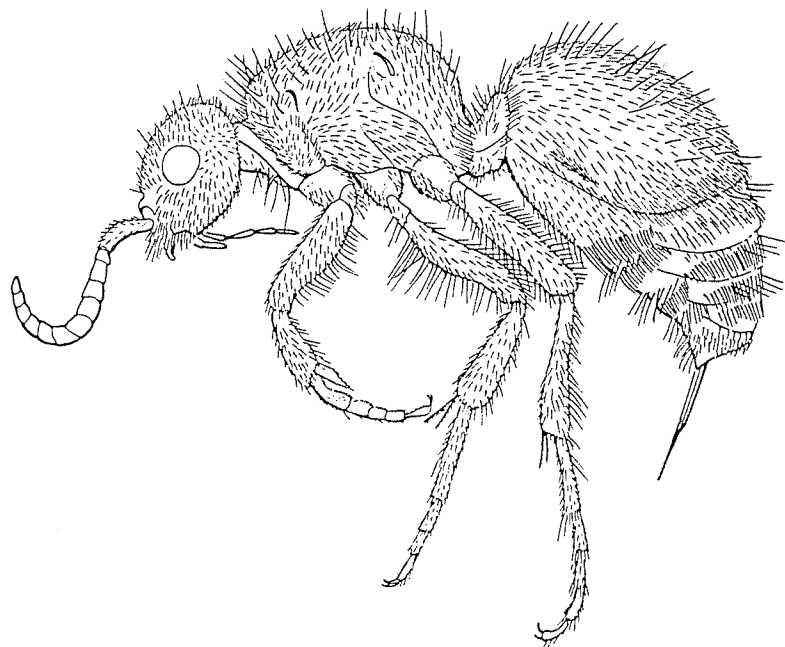
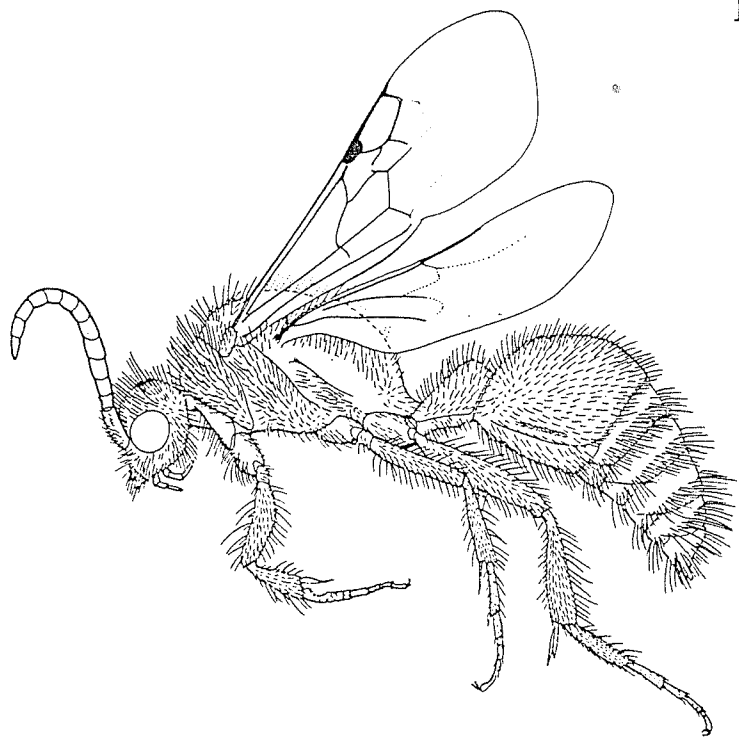
**HYMENOPTERA: Apocrita**  
**Superfamily Apoidea**  
**Family Apidae**  
**Bumblebees, Orchid and Honey bees**



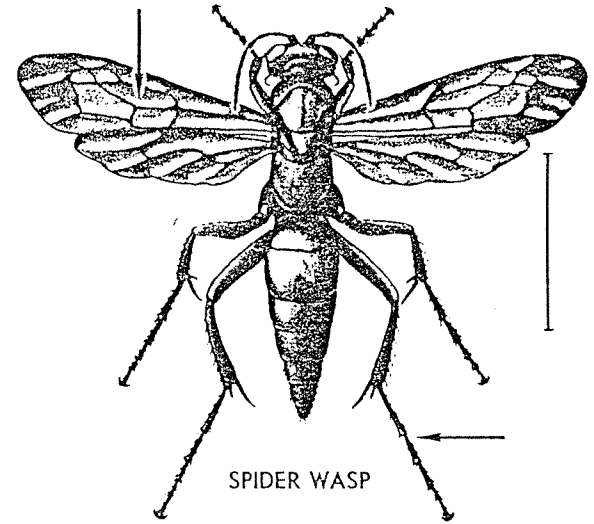
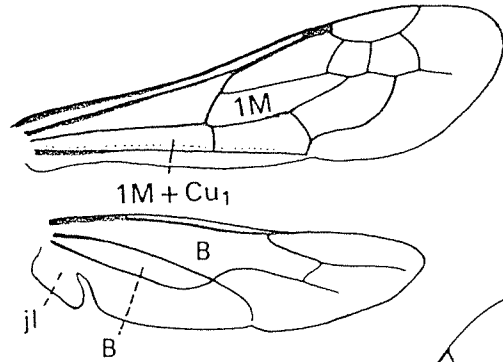
HYMENOPTERA: Apocrita  
 Superfamily Tiphioidea  
 Family Tiphidae  
 Tiphid wasps



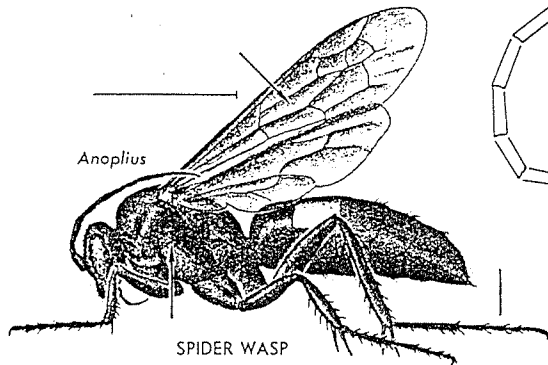
**HYMENOPTERA: Apocrita**  
**Superfamily Tiphioidea**  
**Family Mutillidae**  
**Velvet ants**



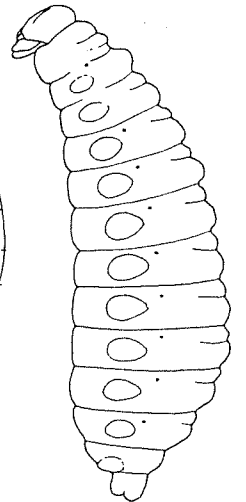
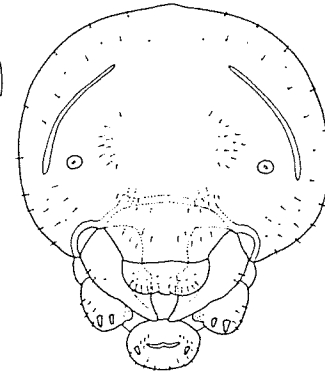
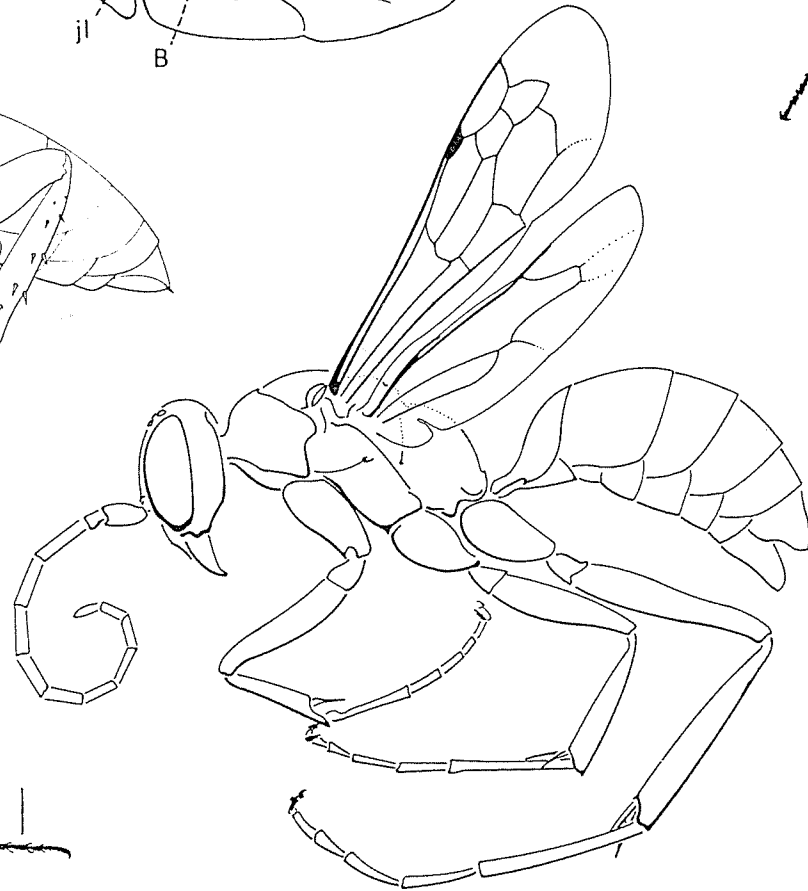
**HYMENOPTERA: Apocrita**  
**Superfamily Pompiloidea**  
**Family Pompilidae**  
**Spider wasps**



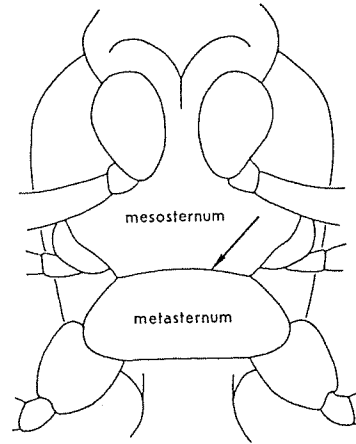
SPIDER WASP



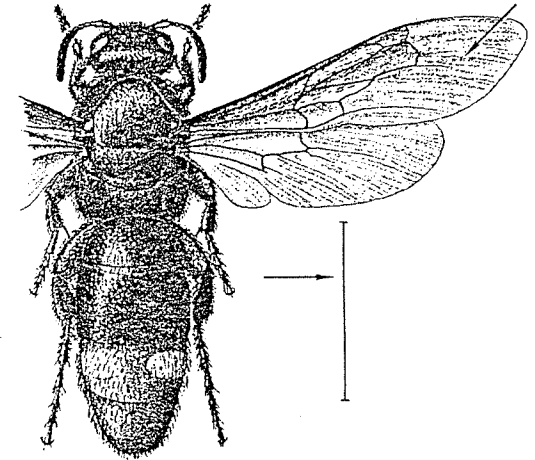
SPIDER WASP



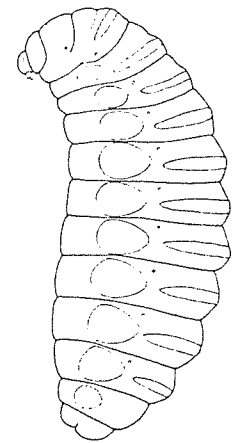
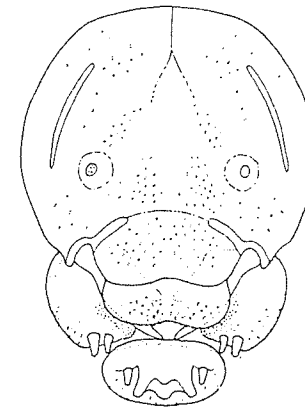
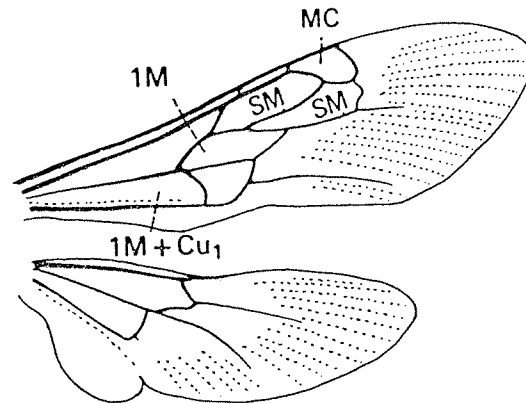
**HYMENOPTERA: Apocrita**  
**Superfamily Scoliioidea**  
**Family Scoliidae**  
**Scoliid wasps**



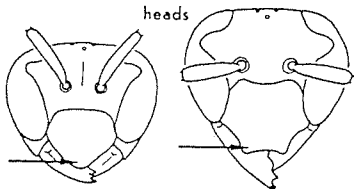
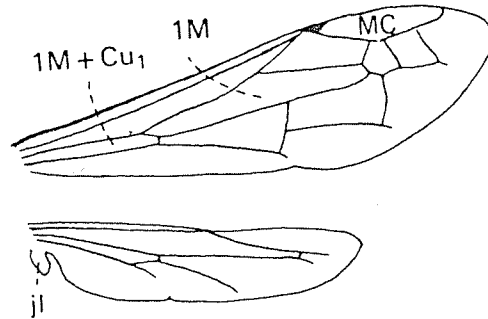
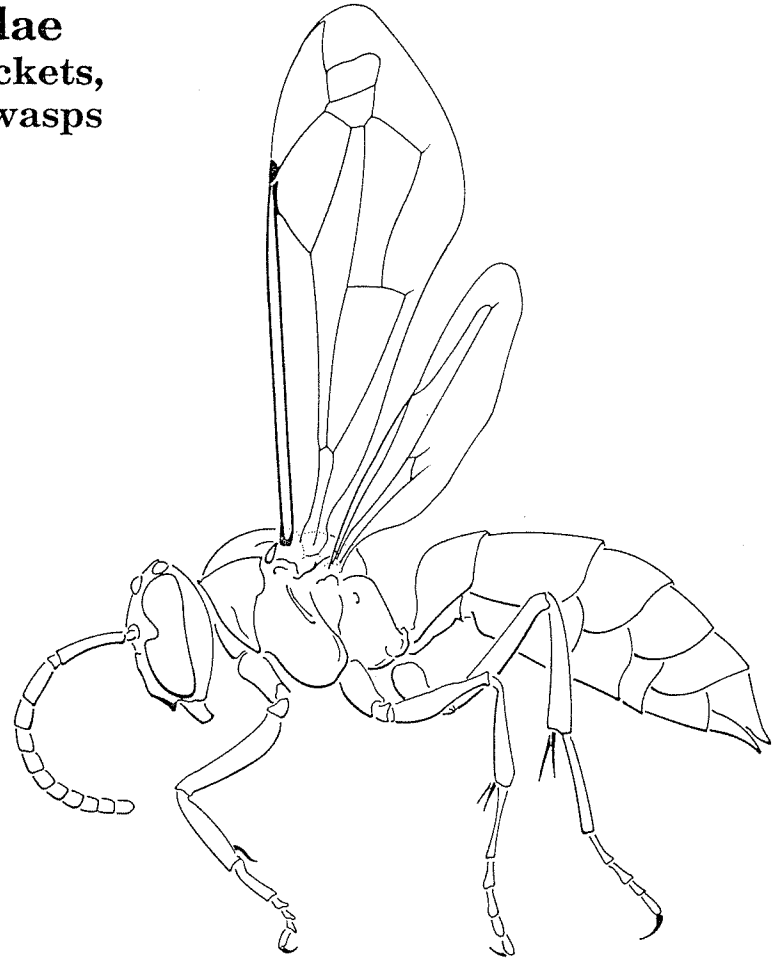
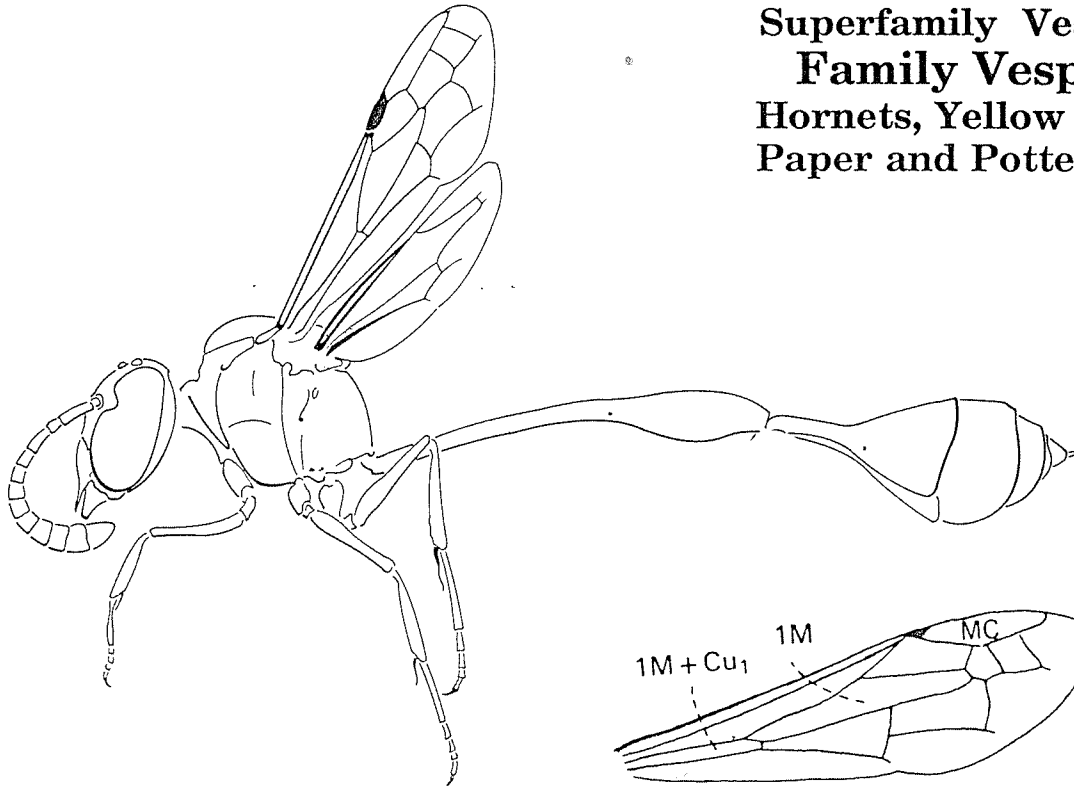
Thorax of a Scoliid Wasp (ventral)



SCOLIID WASP

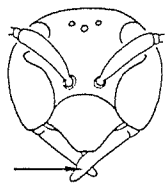


**HYMENOPTERA: Apocrita**  
**Superfamily Vespoidea**  
**Family Vespidae**  
**Hornets, Yellow jackets,**  
**Paper and Potter wasps**

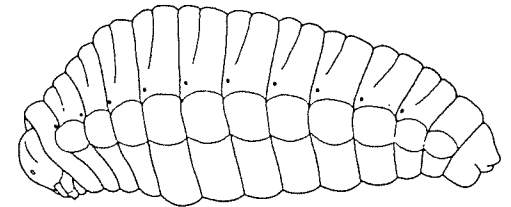
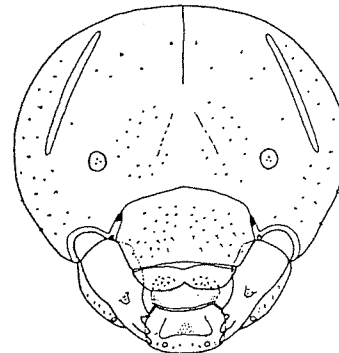
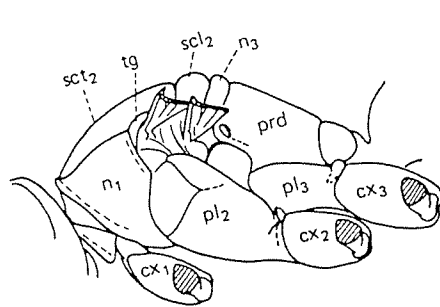


PAPER WASP

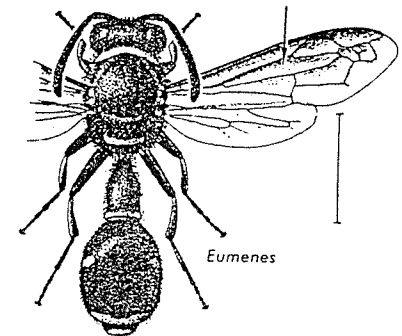
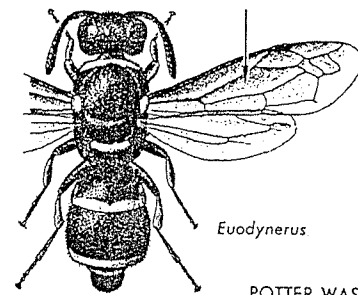
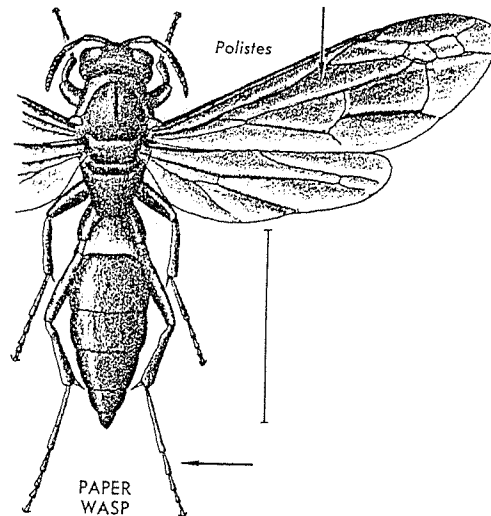
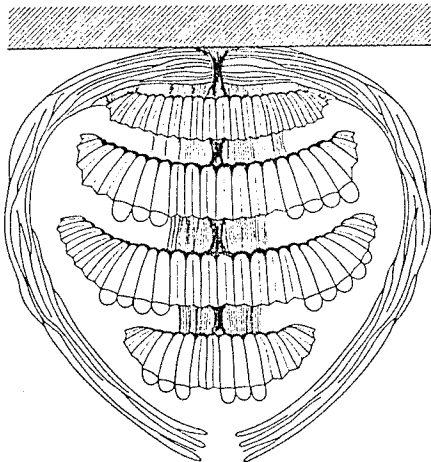
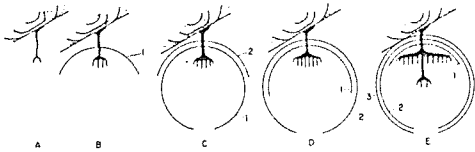
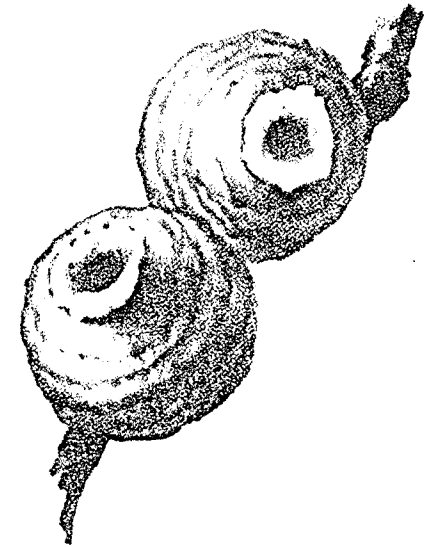
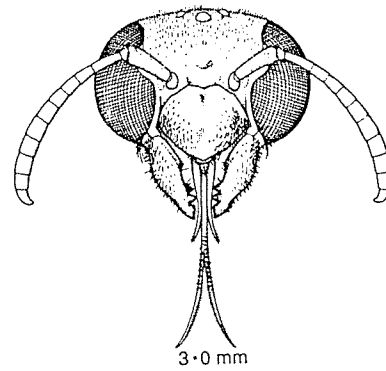
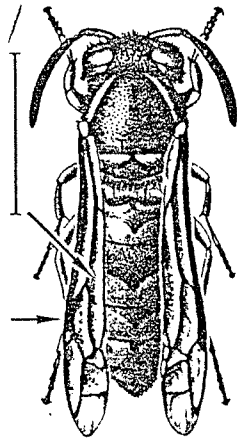
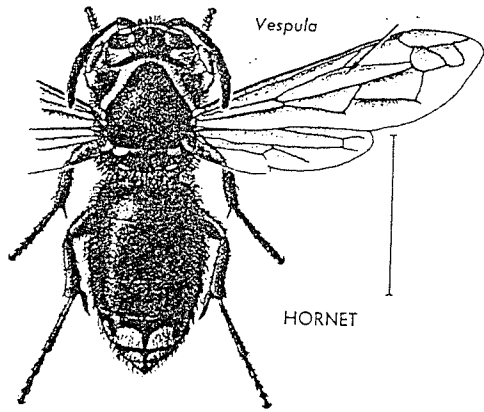
YELLOWJACKET



POTTER WASP

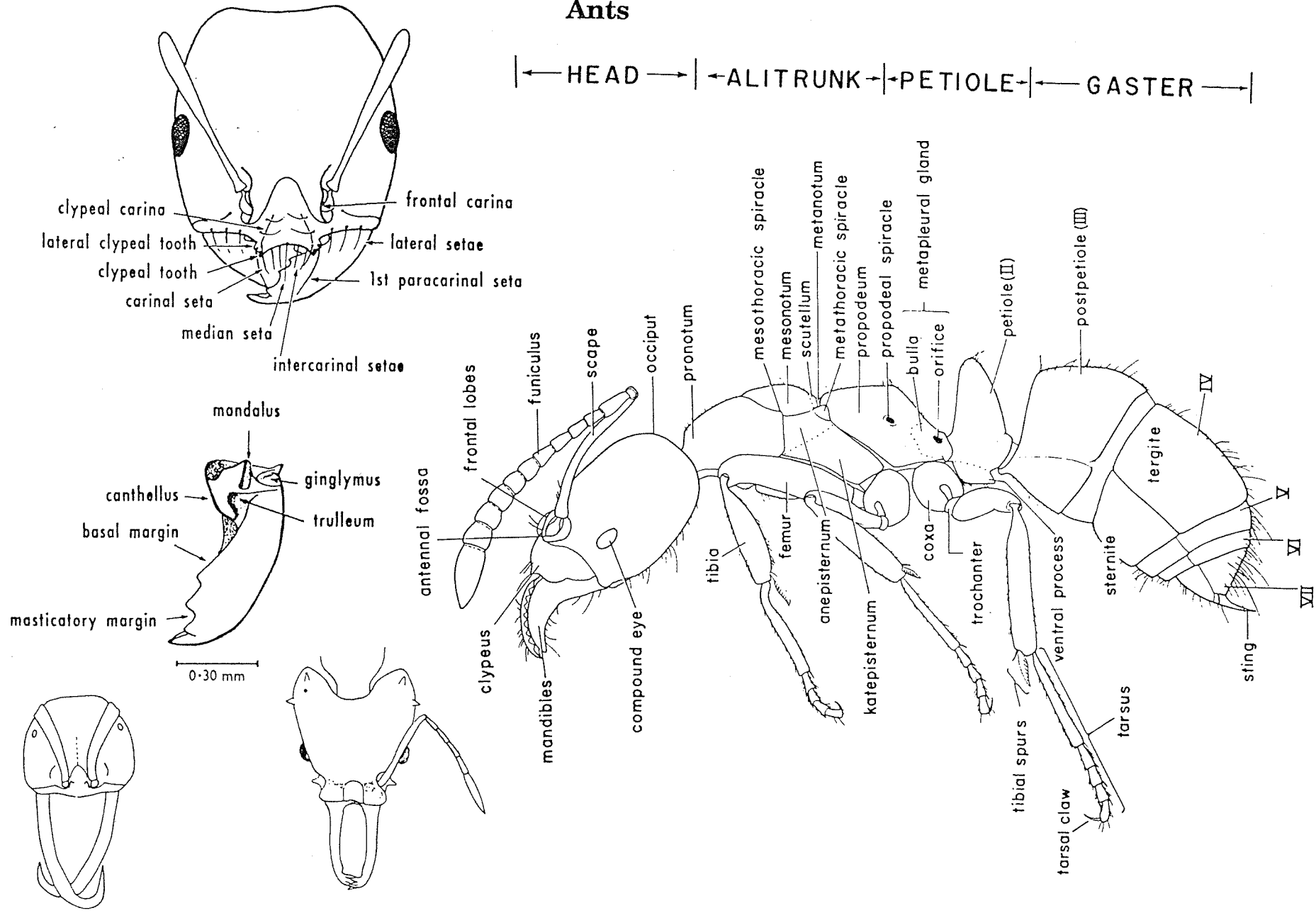


**HYMENOPTERA: Apocrita**  
**Superfamily Vespoidea**  
**Family Vespidae**  
**Hornets, Yellow jackets,**  
**Paper and Potter wasps**

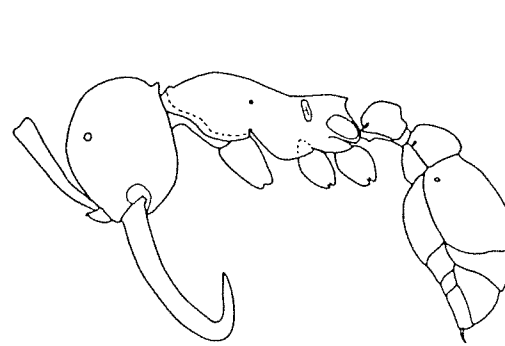
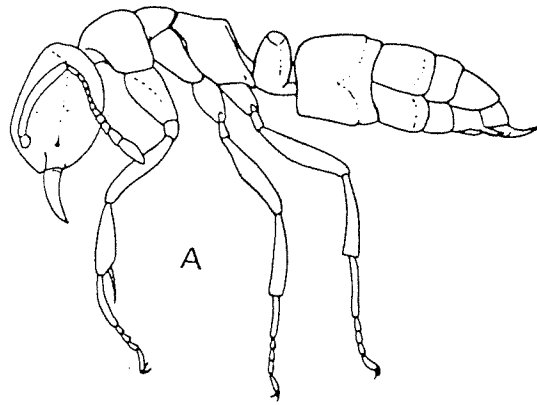
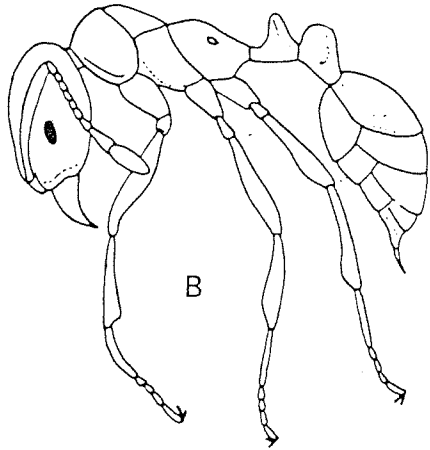




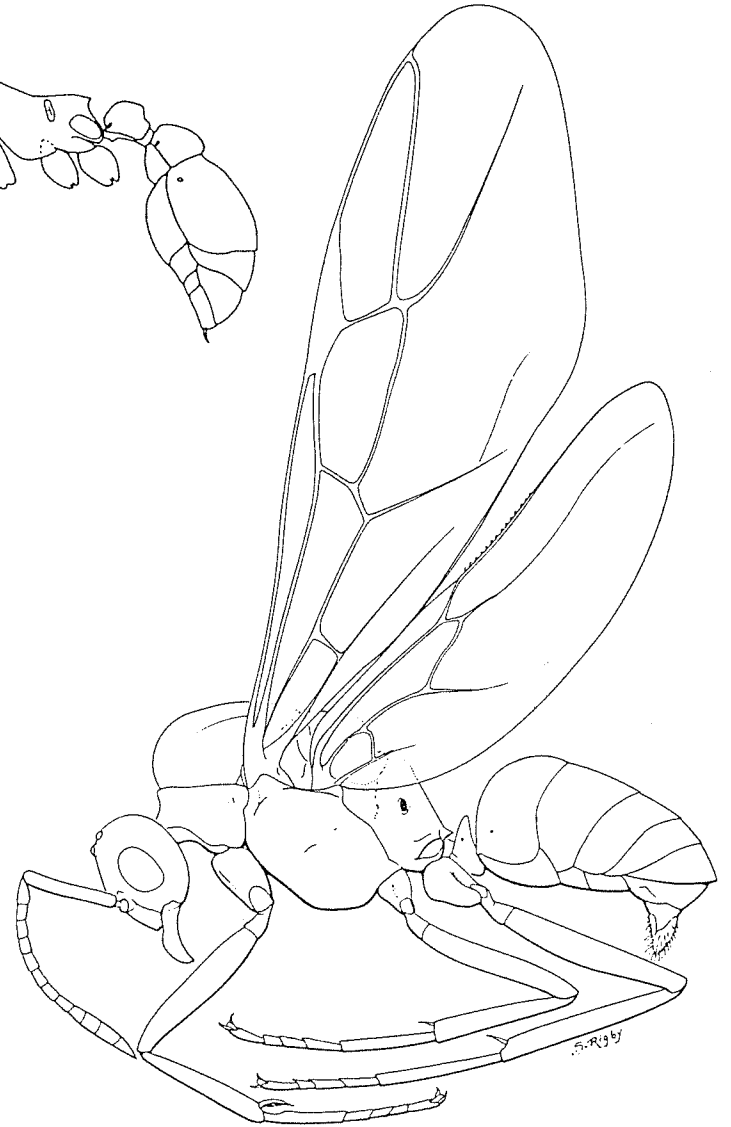
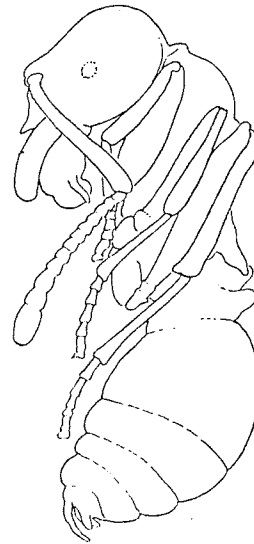
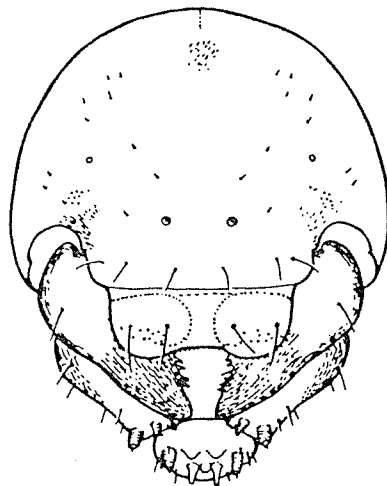
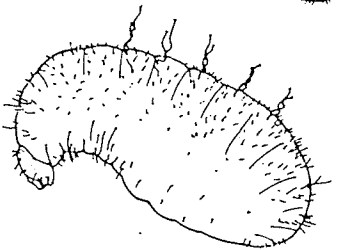
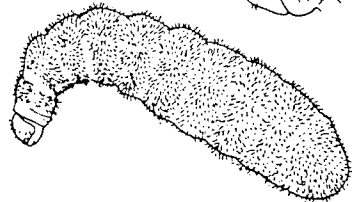
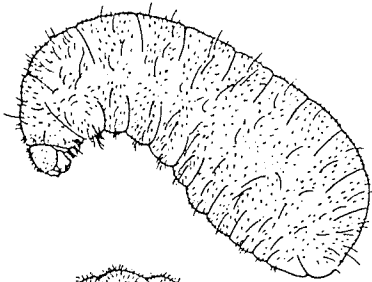
**HYMENOPTERA: Apocrita**  
**Superfamily Formicoidea**  
**Family Formicidae**  
**Ants**



**HYMENOPTERA: Apocrita**  
**Superfamily Formicoidea**  
**Family Formicidae**  
**Ants**



.. Ant workers. A,  
Ponerinae (*Ponera*); B, Myrmicinae  
(*Solenopsis*).



HYMENOPTERA: Apocrita  
Superfamily Formicoidea  
Family Formicidae  
Ants

