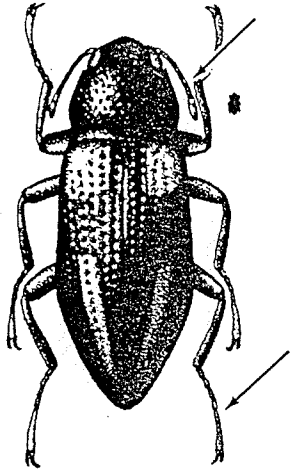
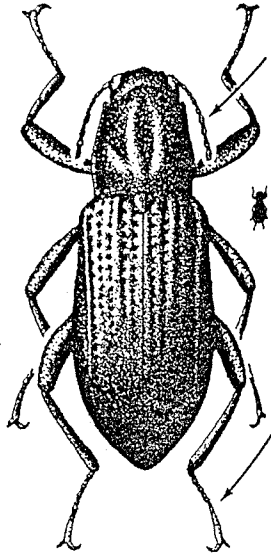


Order Coleoptera
Suborder Polyphaga
Superfamily Dryopoidea

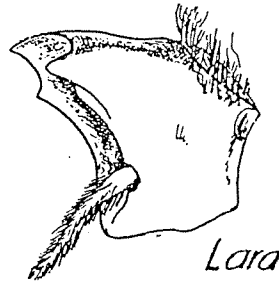
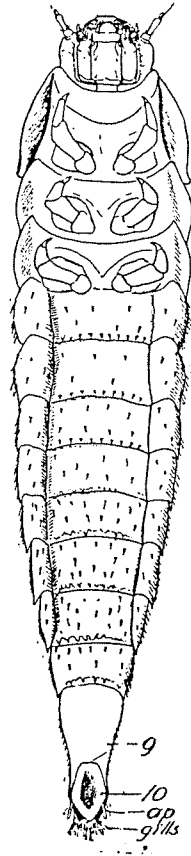
Family Elmidae
Riffle Beetles



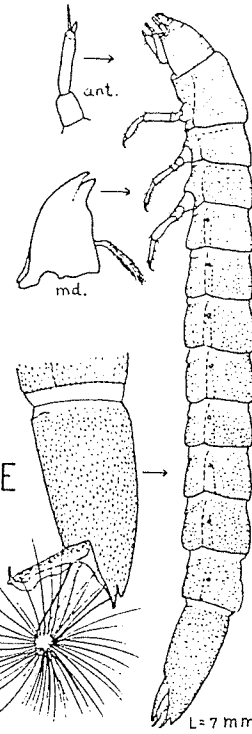
Dubiraphia quadrinotatus



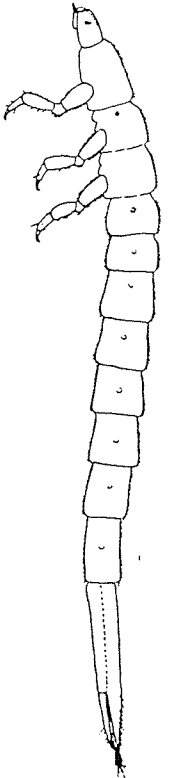
Stenelmis fuscata



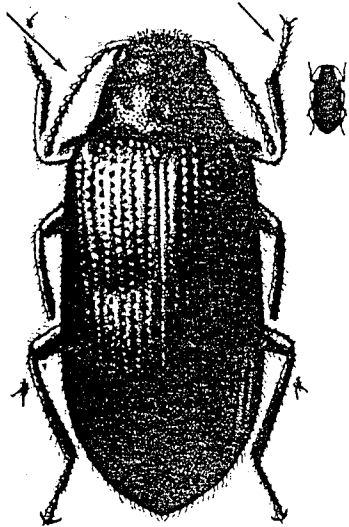
Lara



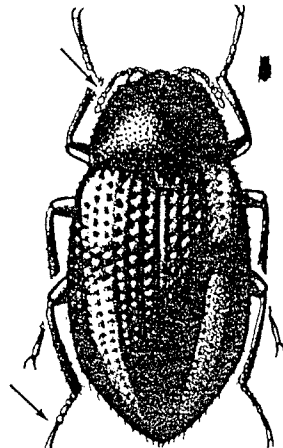
Stenelmis sp.



Simsonia vittata



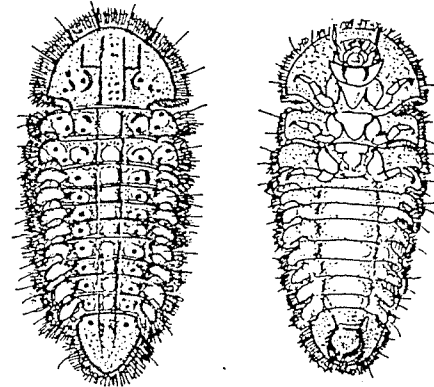
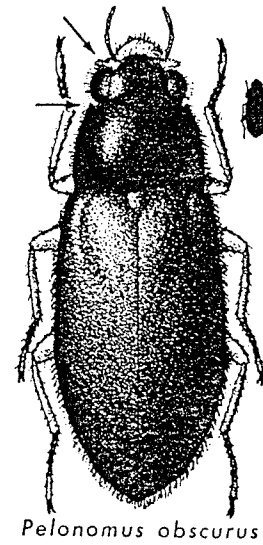
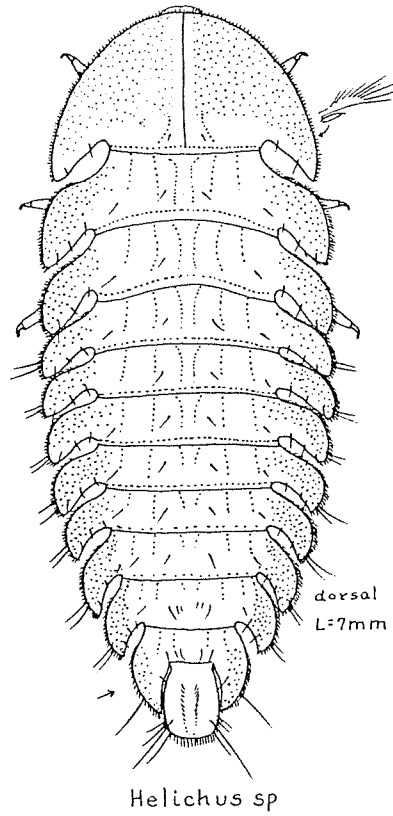
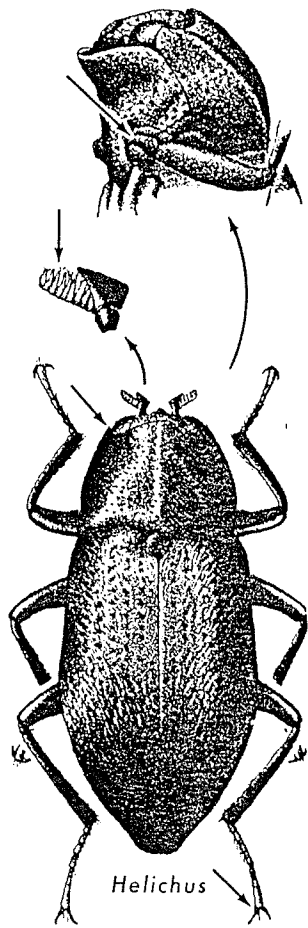
Lara



Optioservus

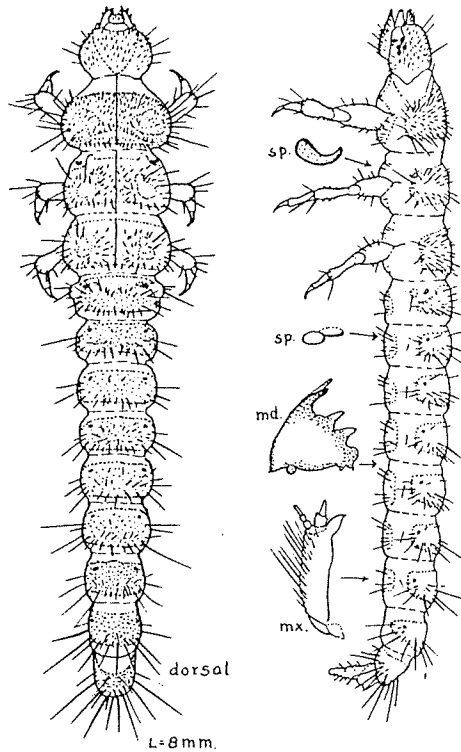
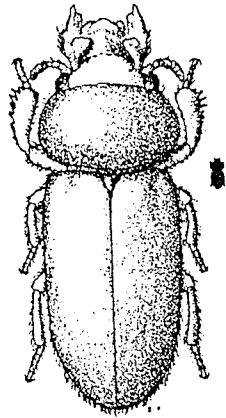
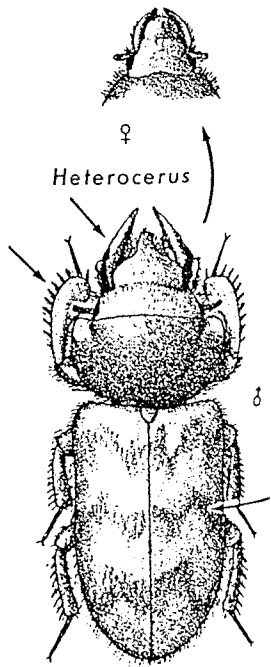
Order Coleoptera
Suborder Polyphaga
Superfamily Dryopoidea

Family Dryopidae
Long-toed water Beetles

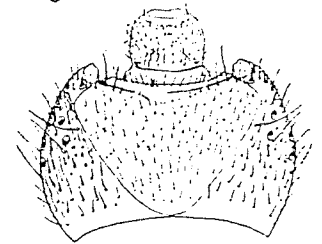
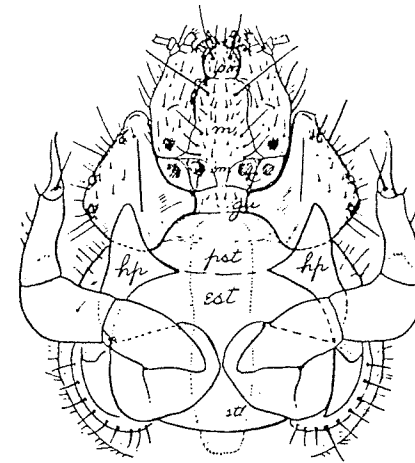


Order Coleoptera
Suborder Polyphaga
Superfamily Dryopoidea

Family Heteroceridae
Variegated mud-loving Beetles

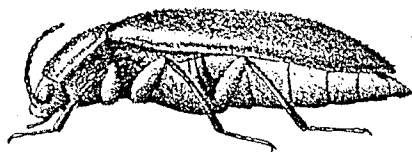


Heterocerus sp.

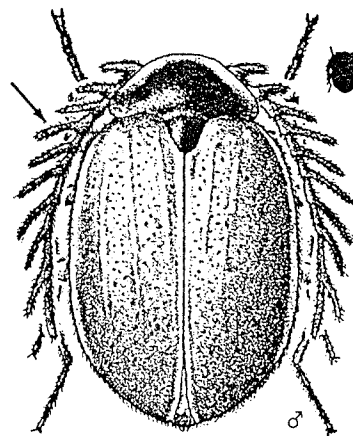
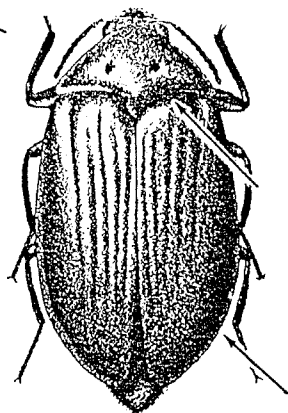


Order Coleoptera
Suborder Polyphaga
Superfamily Dryopoidea

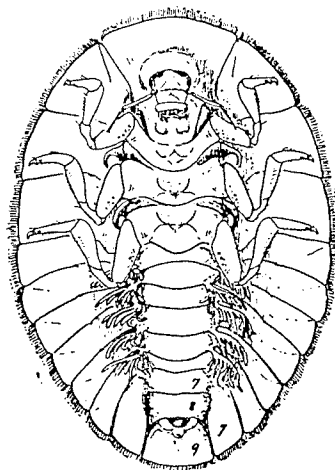
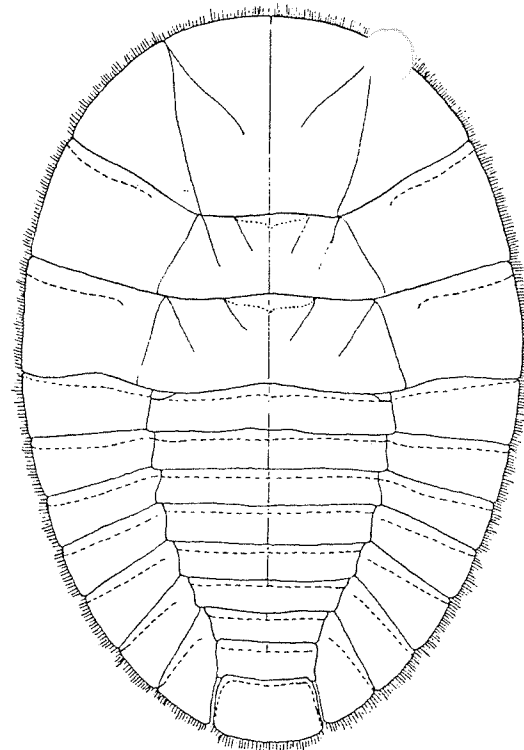
Family Psephenidae
Water-penny Beetles



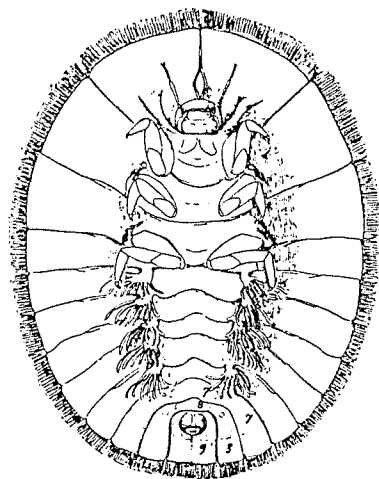
Psephenus herricki



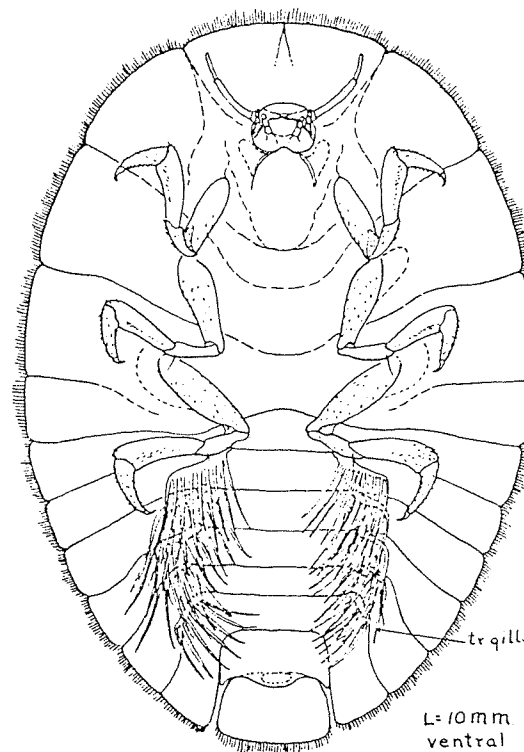
Eubrianax edwardsi



Psephenus



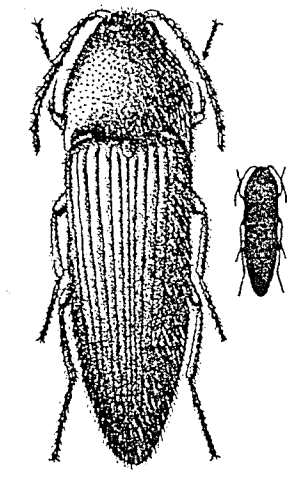
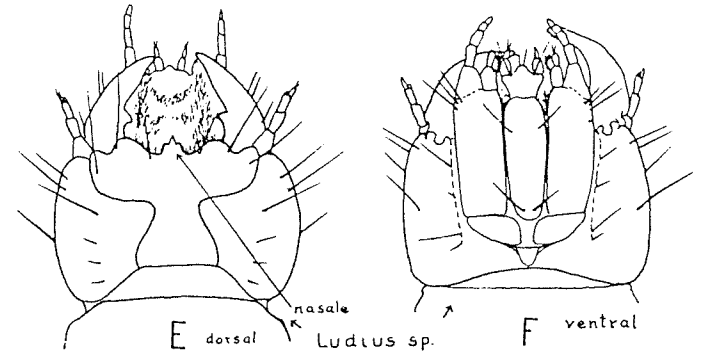
Eubrianax



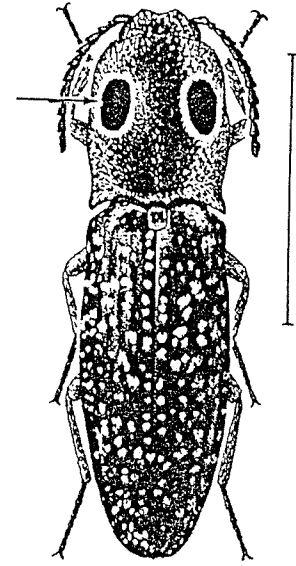
L= 10 mm
ventral

Order Coleoptera
 Suborder Polyphaga
 Superfamily Elateroidea

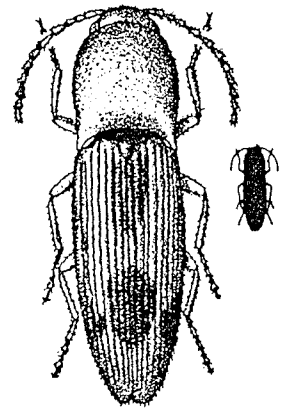
Family Elateridae
 Click Beetles



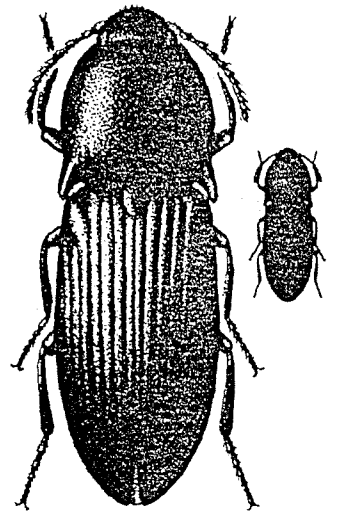
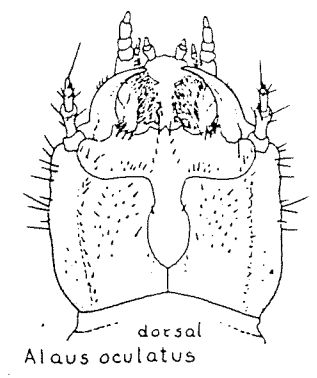
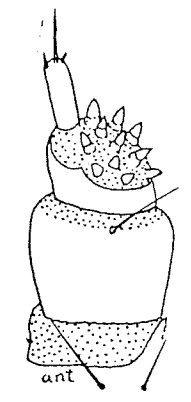
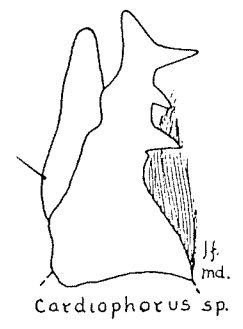
Melanotus communis



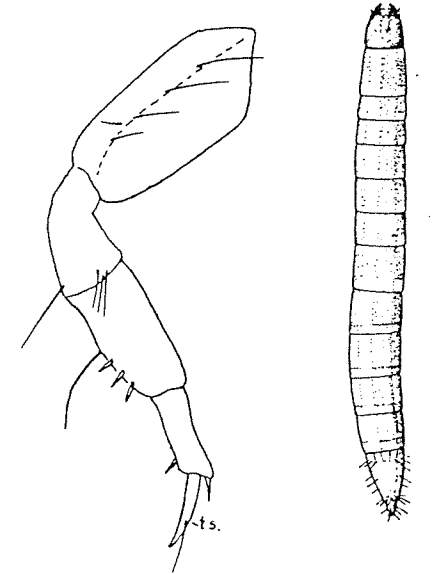
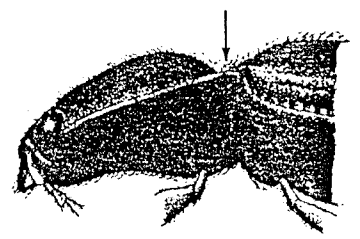
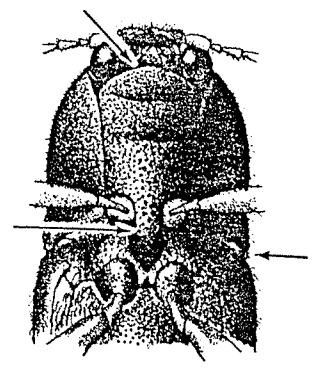
EYED CLICK BEETLE



TOBACCO WIREWORM

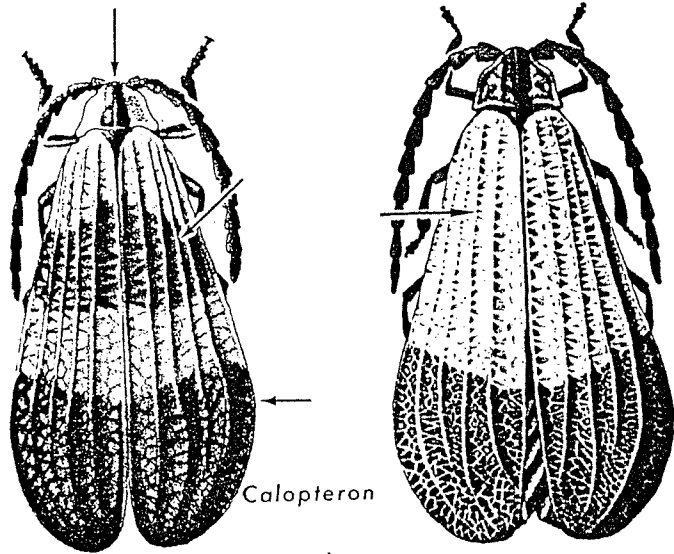


PRAIRIE GRAIN WIREWORM



Order Coleoptera
Suborder Polyphaga
Superfamily Cantharoidea

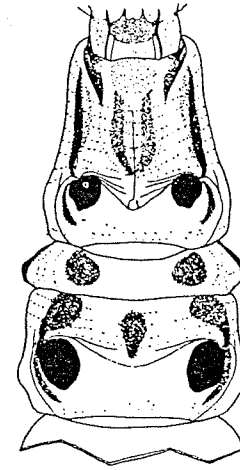
Family Lycidae
Net-winged Beetles



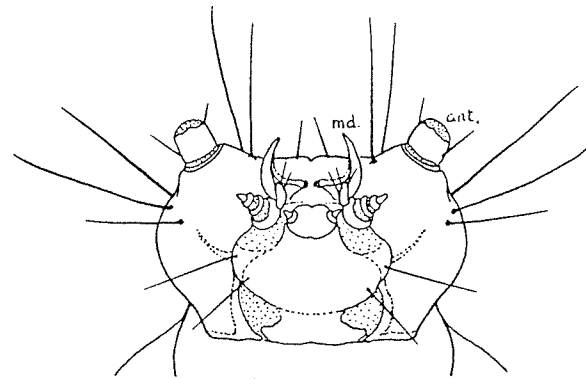
Calopteron



Lycus



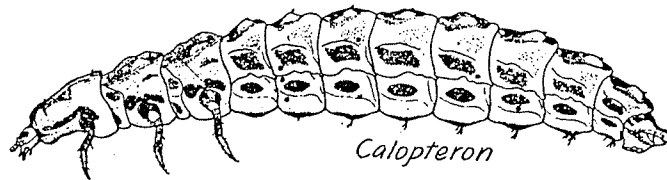
Calopteron



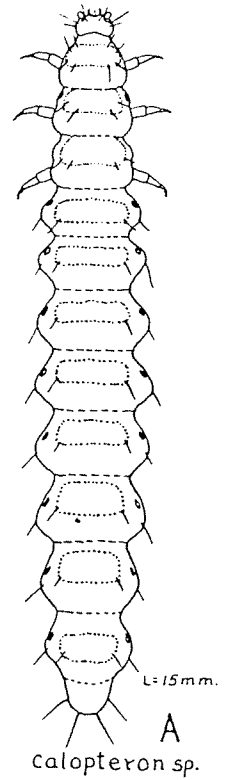
Calopteron sp



Plateros



Calopteron

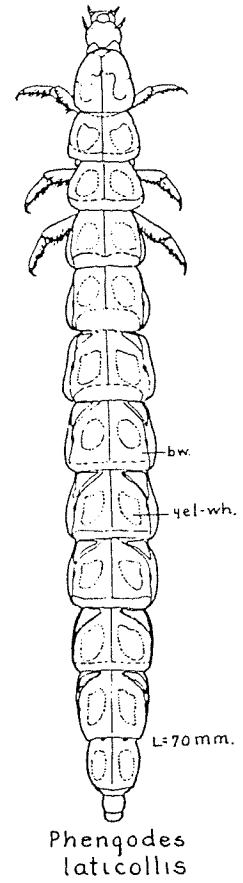
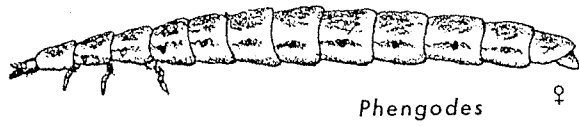
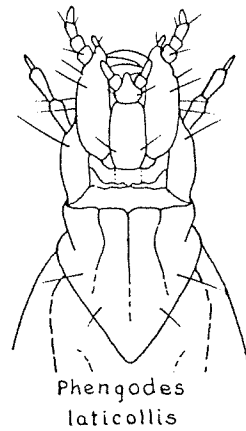
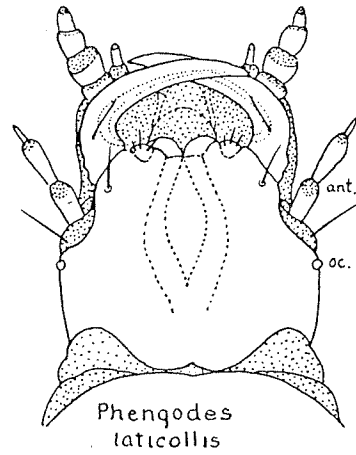
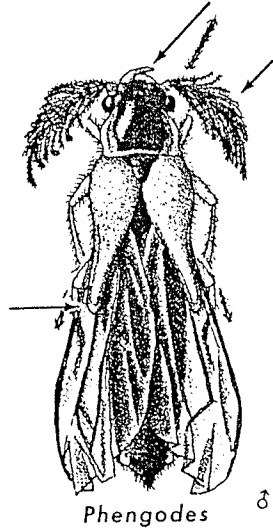


L = 15 mm.

A
Calopteron sp.

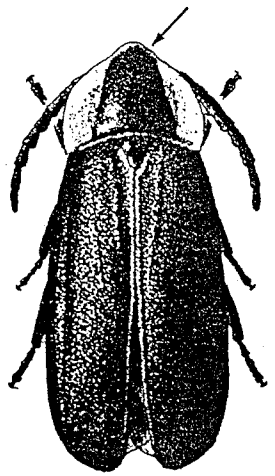
Order Coleoptera
Suborder Polyphaga
Superfamily Cantharoidea

Family Phengodidae
Glow-worms

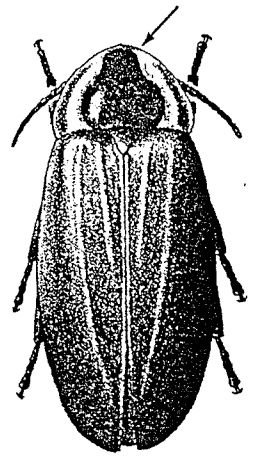


Order Coleoptera
 Suborder Polyphaga
 Superfamily Cantharoidea

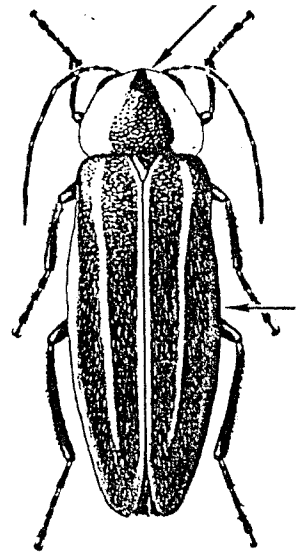
Family Lampyridae
 Lightningbugs



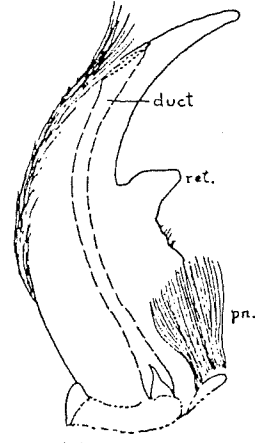
Lucidota



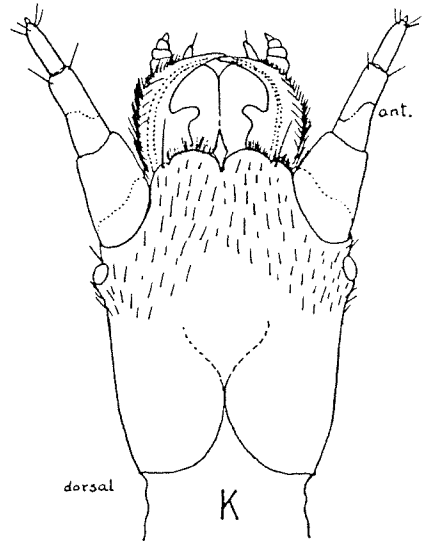
Ellychnia



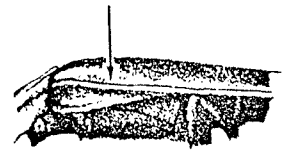
Pyractomena



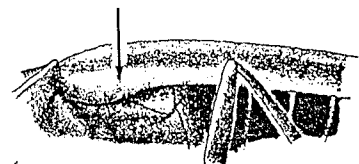
LAMPYRIDAE



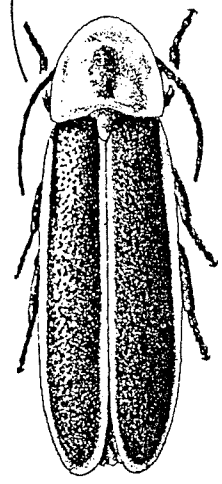
Photuris sp.



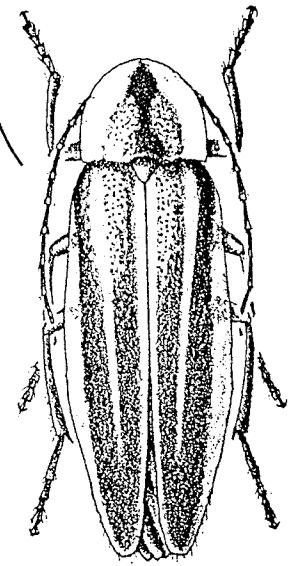
Elytral fold complete



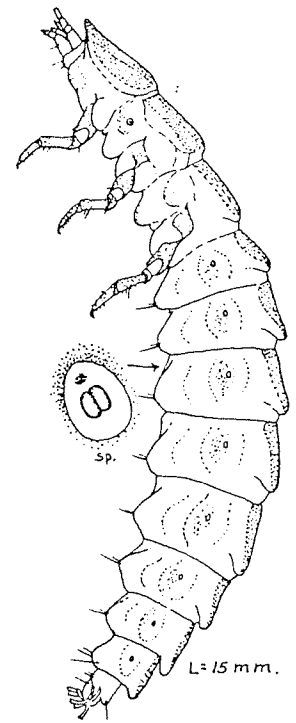
Elytral fold incomplete



Photinus

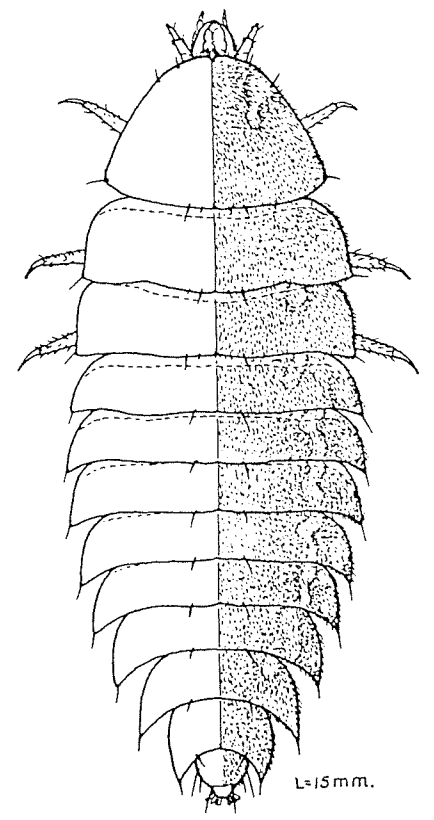


Photuris



Photinus sp.

L=15 mm.

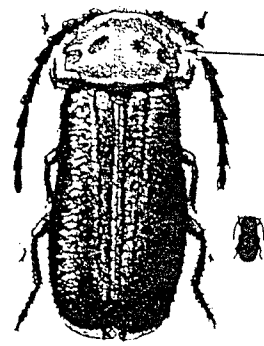


Photuris sp.

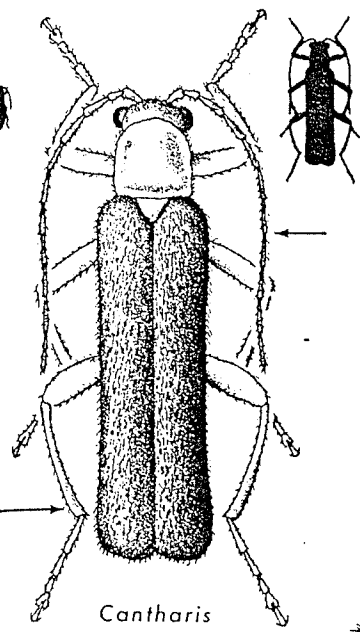
L=15 mm.

Order Coleoptera
 Suborder Polyphaga
 Superfamily Cantharoidea

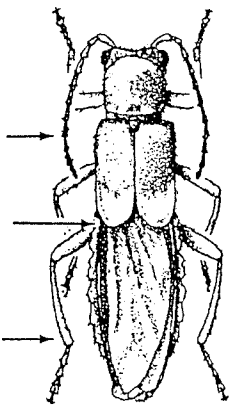
Family Cantharidae
 Soldier Beetles



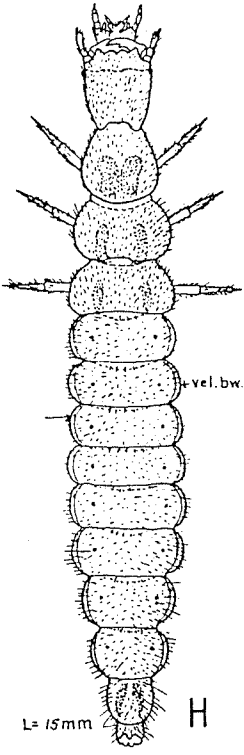
Silis



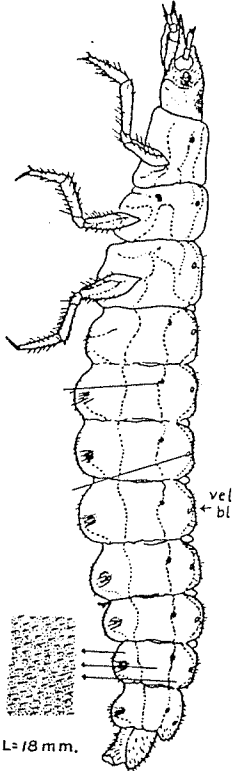
Cantharis



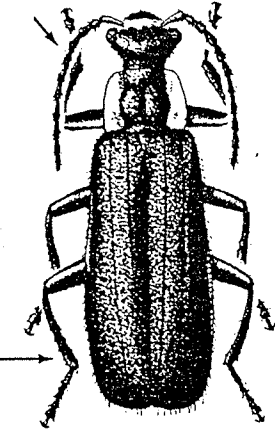
Trypherus latipennis



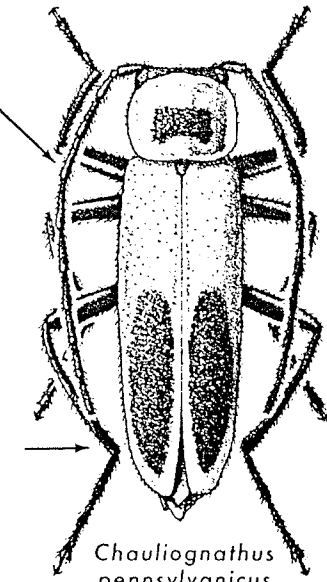
L = 15mm
 H
Cantharis sp.



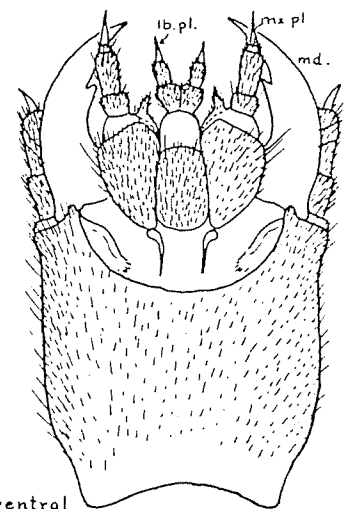
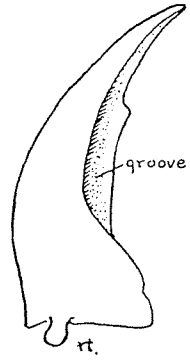
L = 18mm.
Chauliognathus sp.



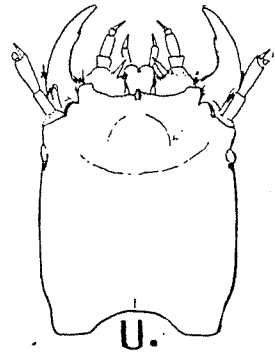
Podabrus



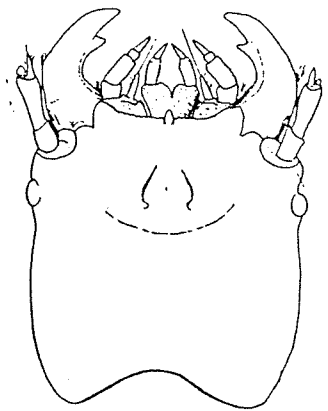
Chauliognathus pennsylvanicus



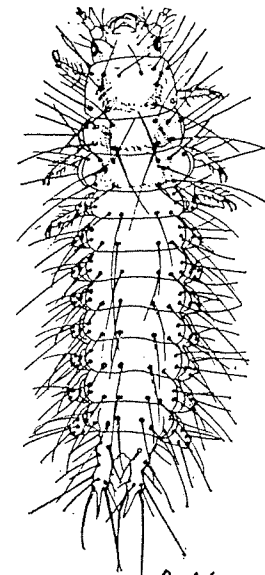
ventral protracted
Cantharis sp.



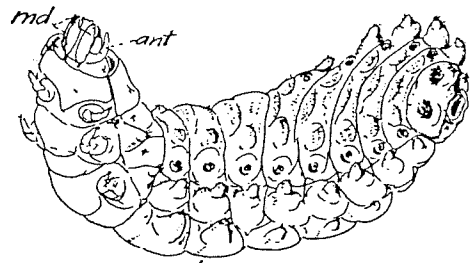
U.
Podabrus



Cantharis



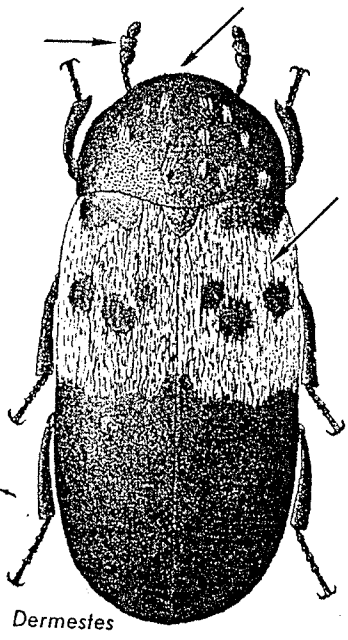
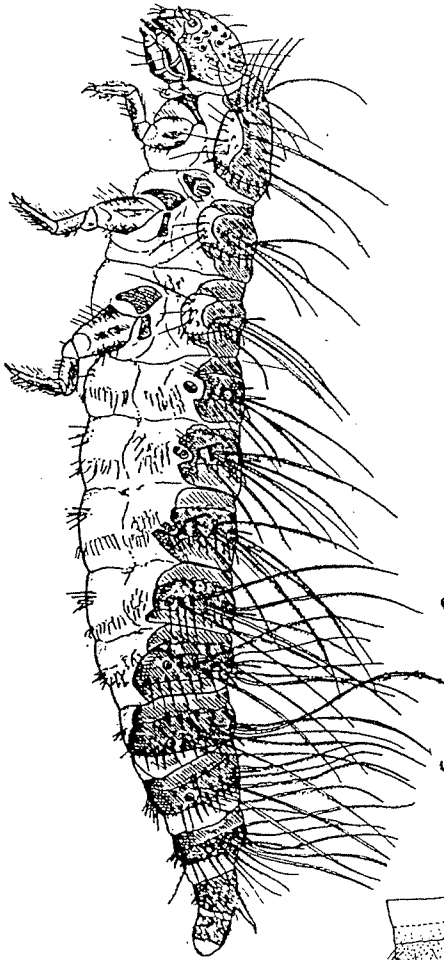
Drilus



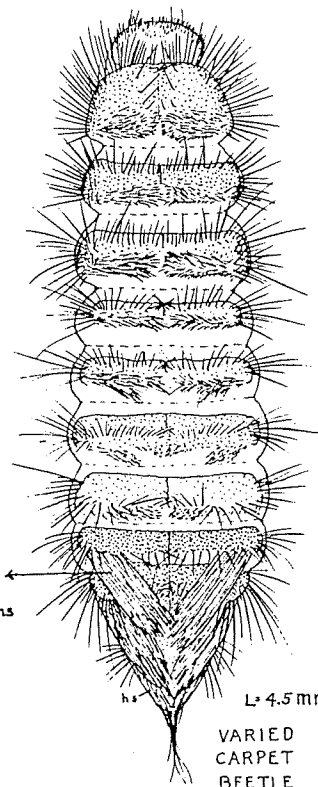
Drilus

Order Coleoptera
 Suborder Polyphaga
 Superfamily Dermestoidea

Family Dermestidae
 Dermested Beetles

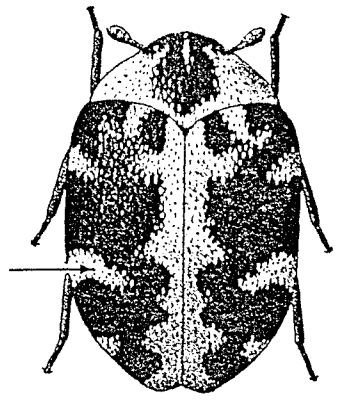


Dermestes

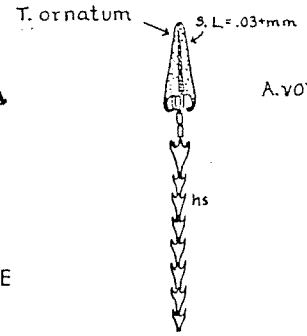


L= 4.5 mm.

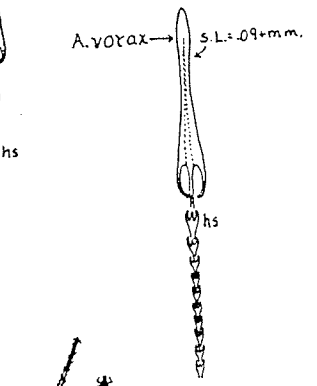
VARIED CARPET BEETLE



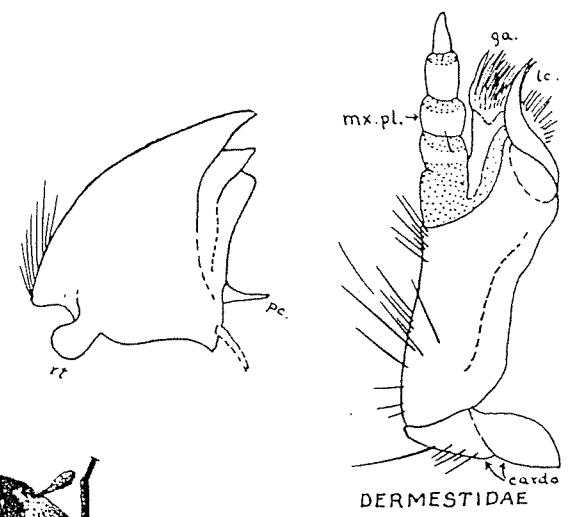
BUFFALO CARPET BEETLE



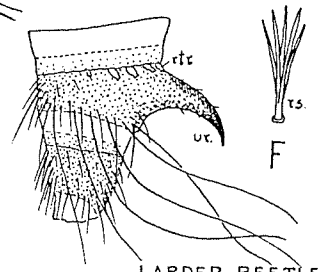
T. ornatum



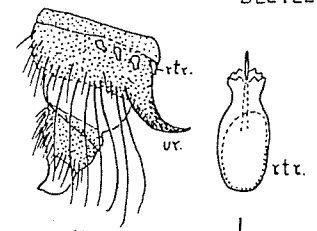
A. vorax



DERMESTIDAE



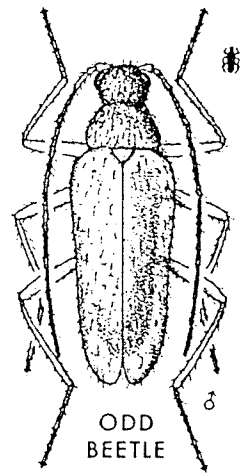
LARDER BEETLE



HIDE BEETLE



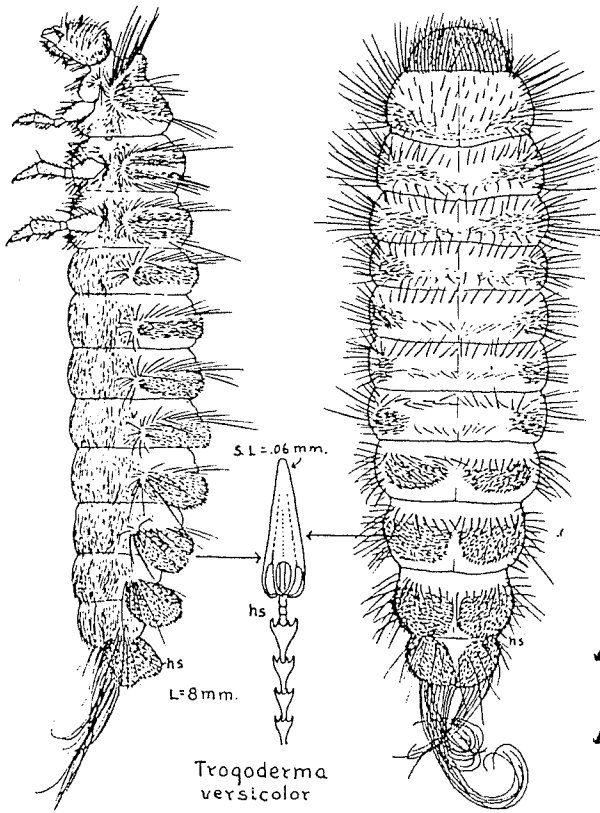
Thyodrias



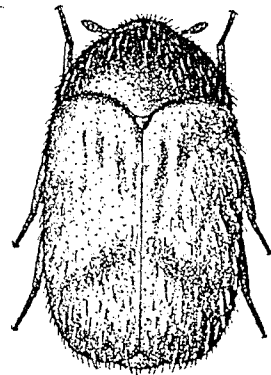
ODD BEETLE ♂

Order Coleoptera
Suborder Polyphaga
Superfamily Dermestoidea

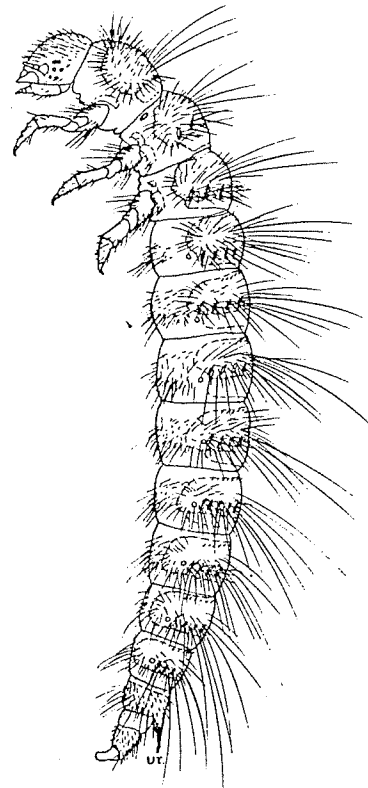
Family Dermestidae
Dermested Beetles



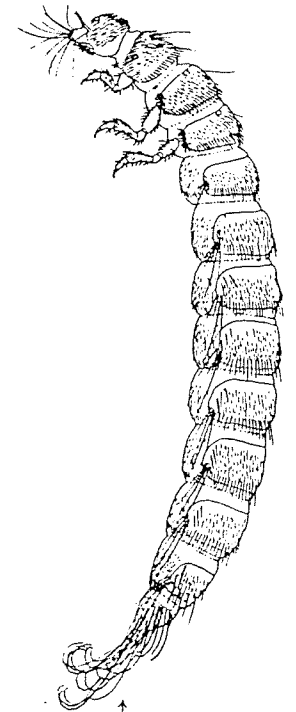
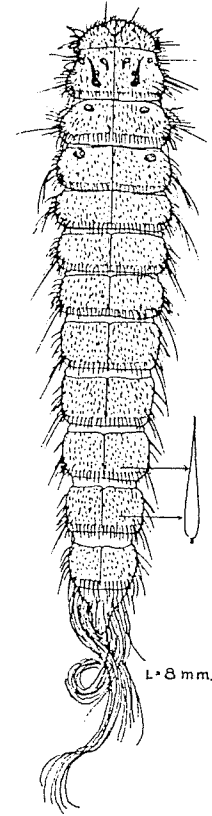
*Trogoderma
versicolor*



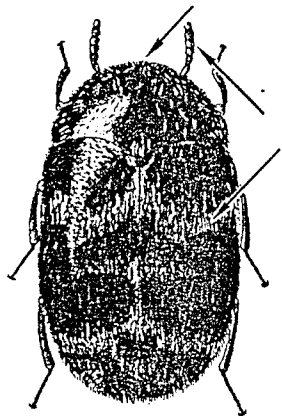
KHAPRA BEETLE



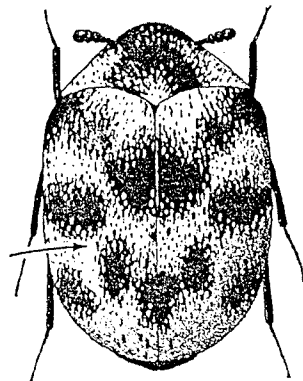
BLACK LARDER BEETLE



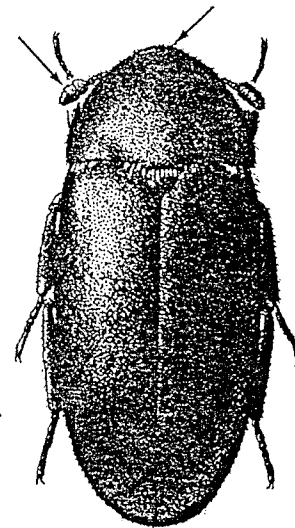
BLACK CARPET BEETLE



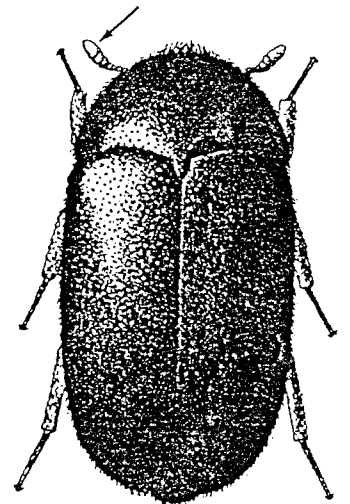
Trogoderma



Anthrenus



BLACK LARDER BEETLE



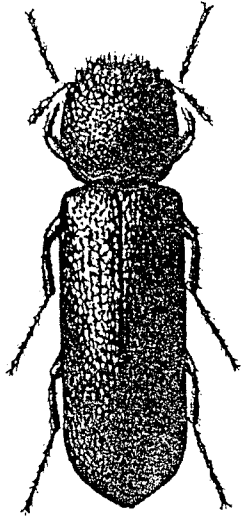
BLACK CARPET BEETLE

Order Coleoptera
 Suborder Polyphaga
 Superfamily Bostrichoidea

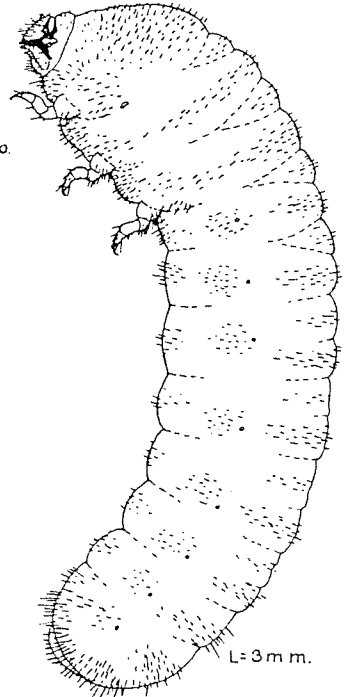
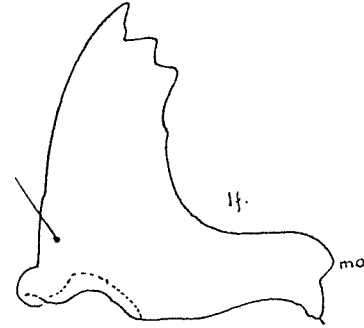
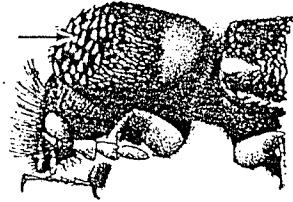
Family Bostrichidae
 Branch-and-twig Beetles



Endecatamus

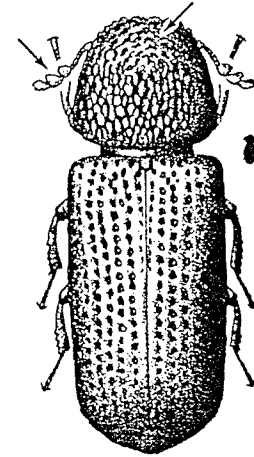


APPLE TWIG BORER

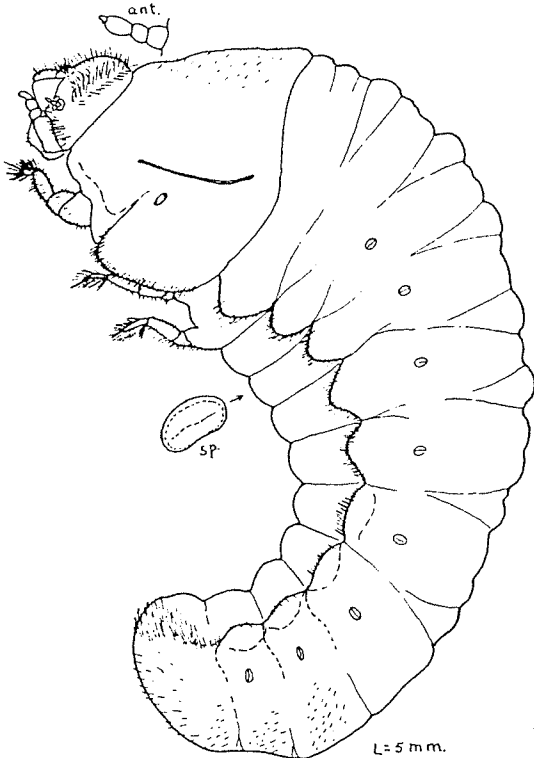


L=3mm.

LESSER GRAIN BORER

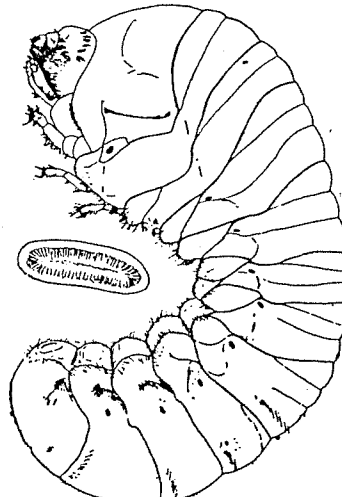


LESSER GRAIN BORER



L=5mm.

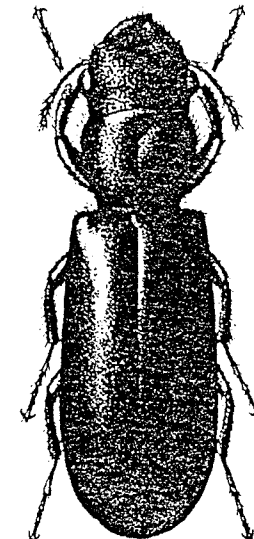
Xylobiops texanum



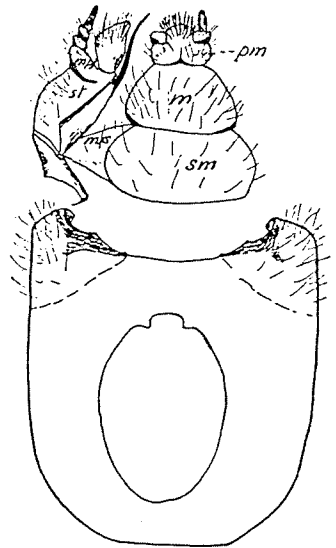
Scobicia



LEAD CABLE BORER



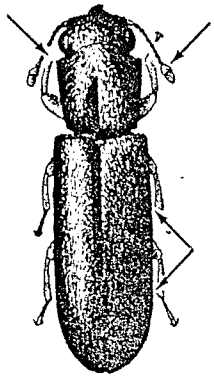
STOUT'S BOSTRICHID



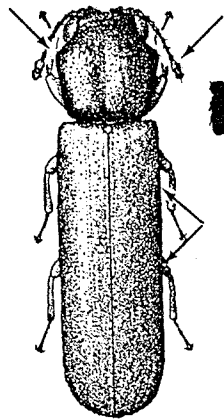
Polycaon

Order Coleoptera
Suborder Polyphaga
Superfamily Bostrichoidea

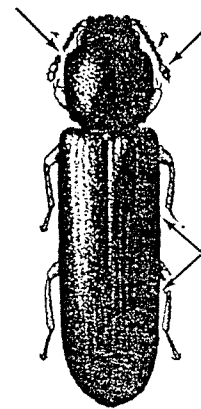
Family Lyctidae
Powder-post Beetles



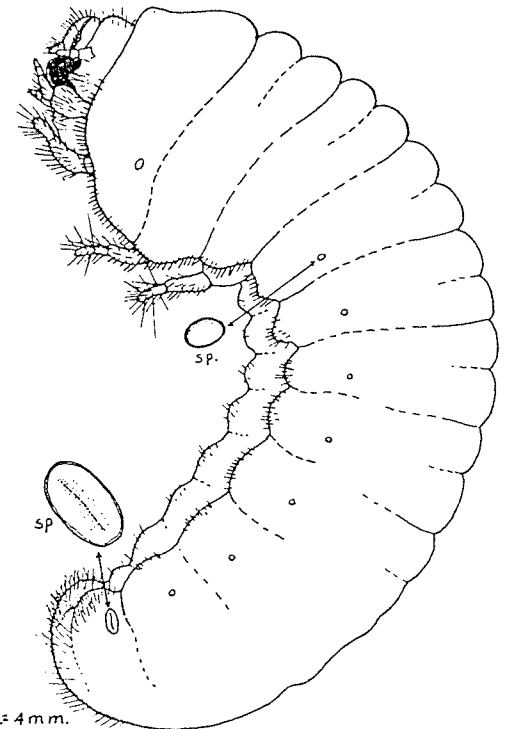
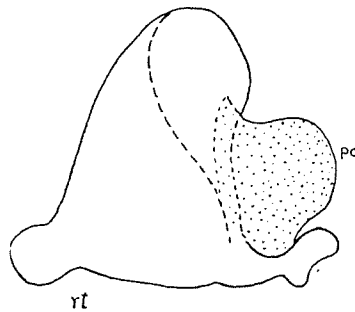
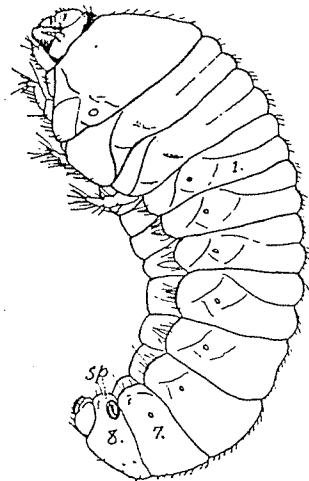
Trogoxylon parallelopipedum



Lyctus brunneus



SOUTHERN
LYCTUS BEETLE

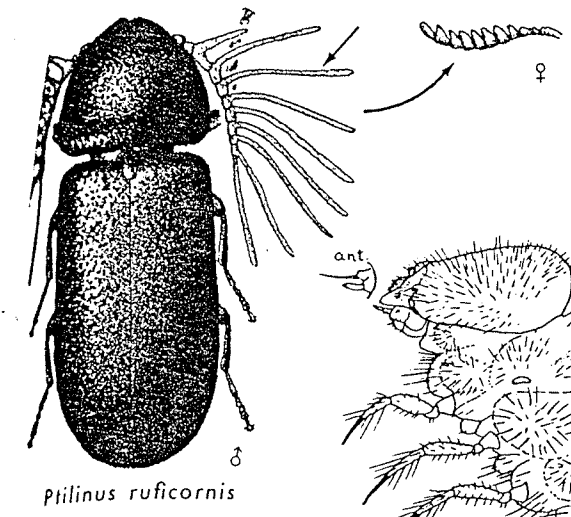


L= 4mm.

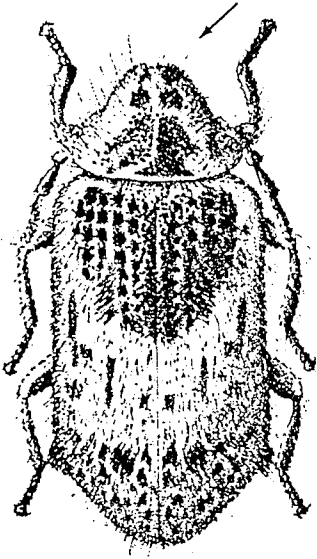
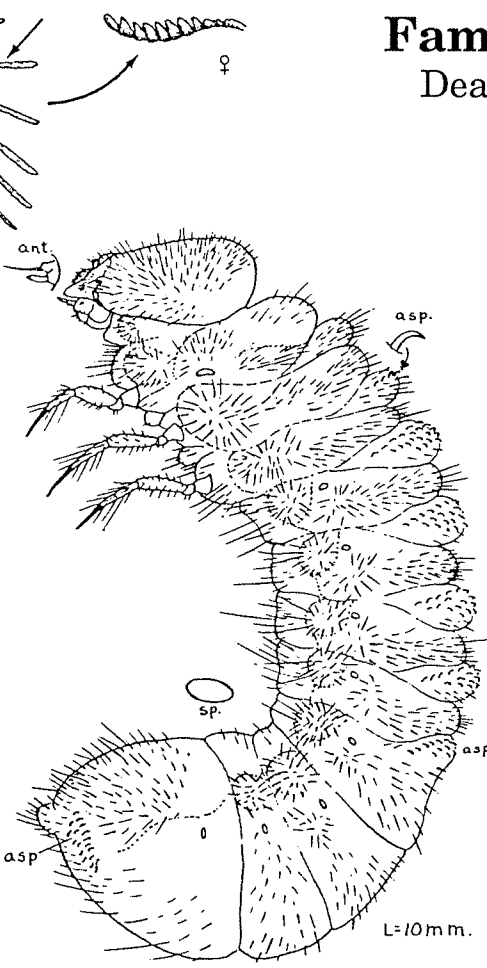
SOUTHERN LYCTUS BEETLE

Order Coleoptera
 Suborder Polyphaga
 Superfamily Bostrichoidea

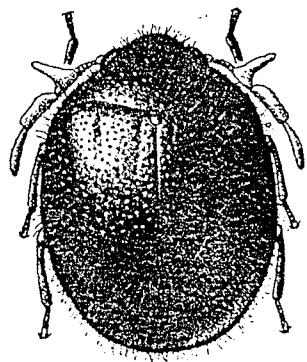
Family Anobiidae
 Death-watch Beetles



Ptilinus ruficornis ♂



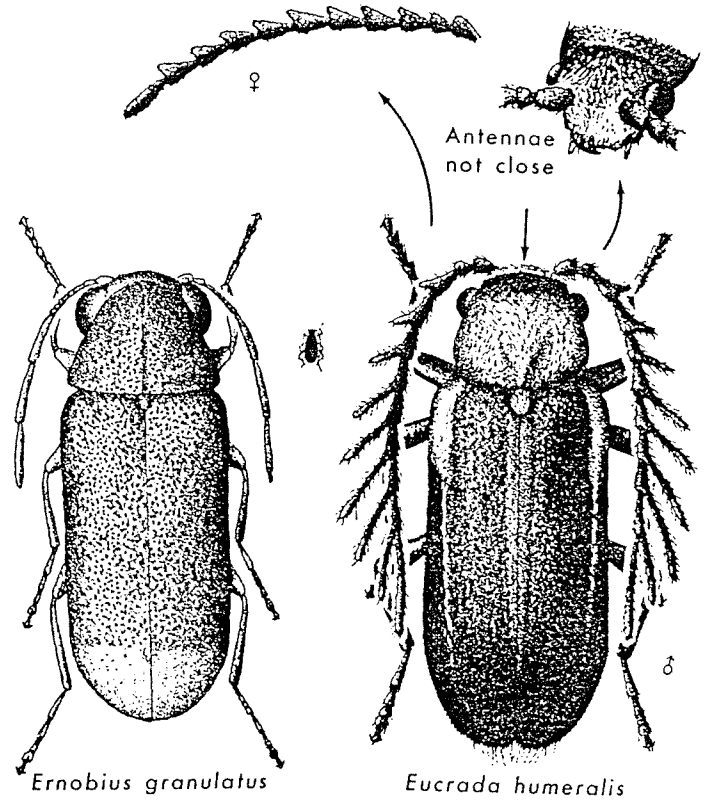
Trichodesma gibbosa



PUFFBALL BEETLE

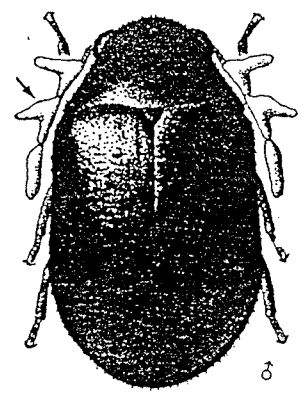
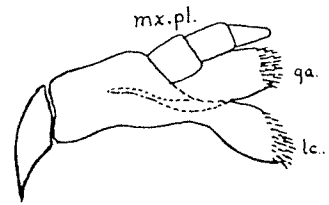


Carnochara



Ernobius granulatus

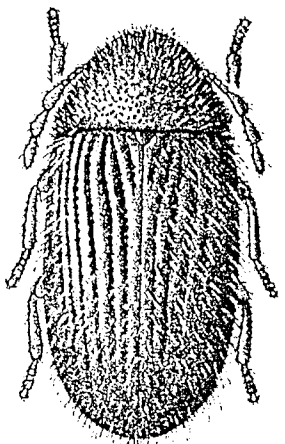
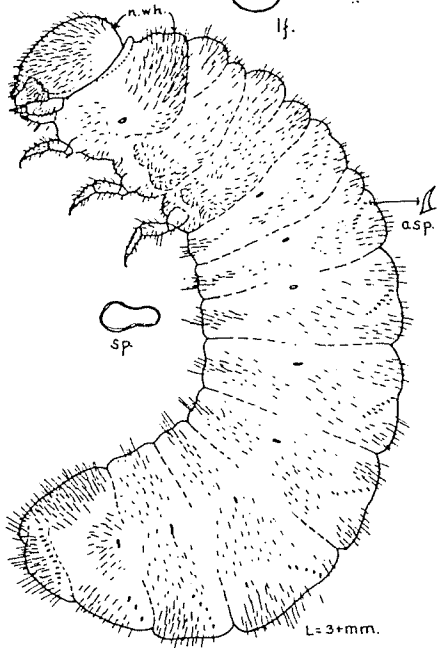
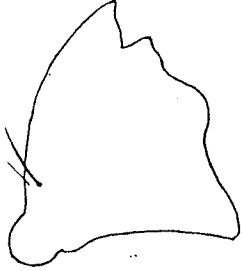
Eucrada humeralis ♂



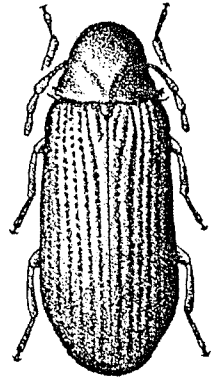
Dorcatoma pallicornis ♂

Order Coleoptera
 Suborder Polyphaga
 Superfamily Bostrichoidea

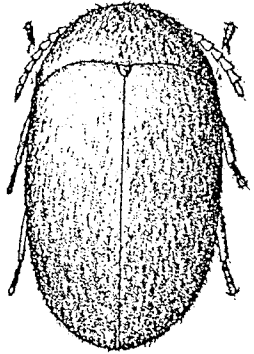
Family Anobiidae
 Death-watch Beetles



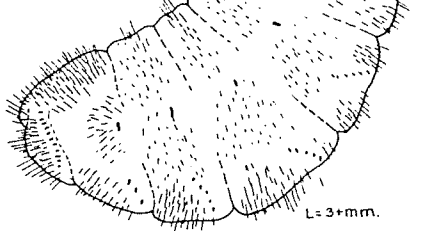
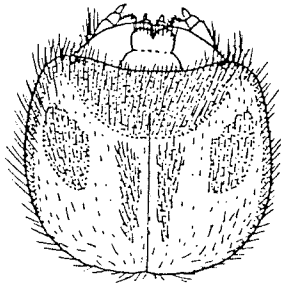
DRUGSTORE BEETLE



FURNITURE BEETLE

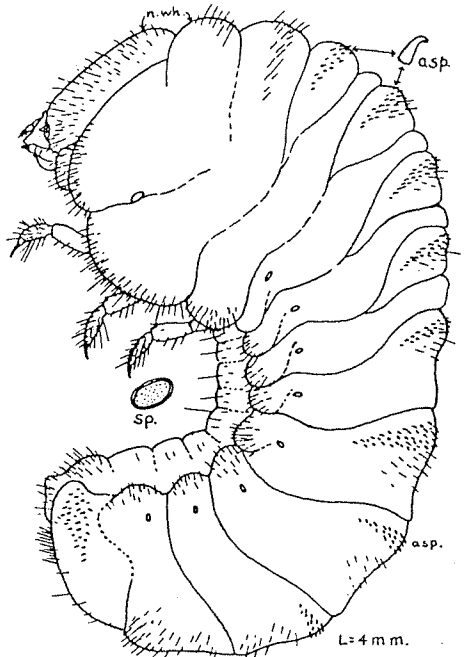


CIGARETTE BEETLE

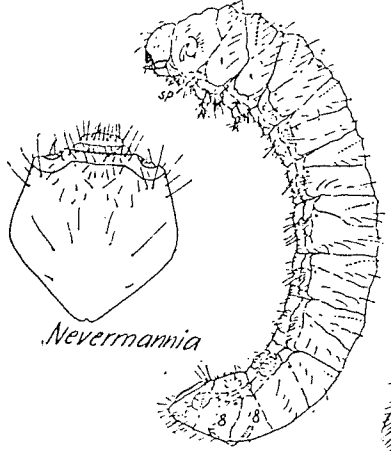


DRUG-STORE BEETLE

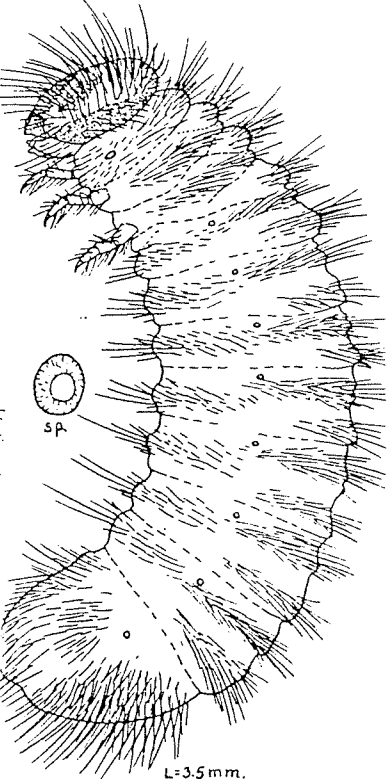
L=3+mm.



EASTERN DEATH-WATCH BEETLE

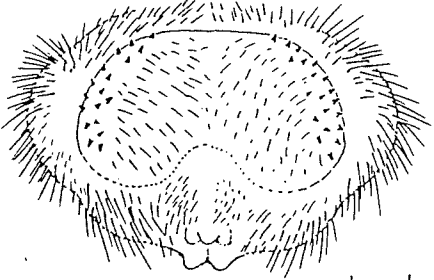


Nevermannia



CIGARETTE BEETLE

L=3.5mm.



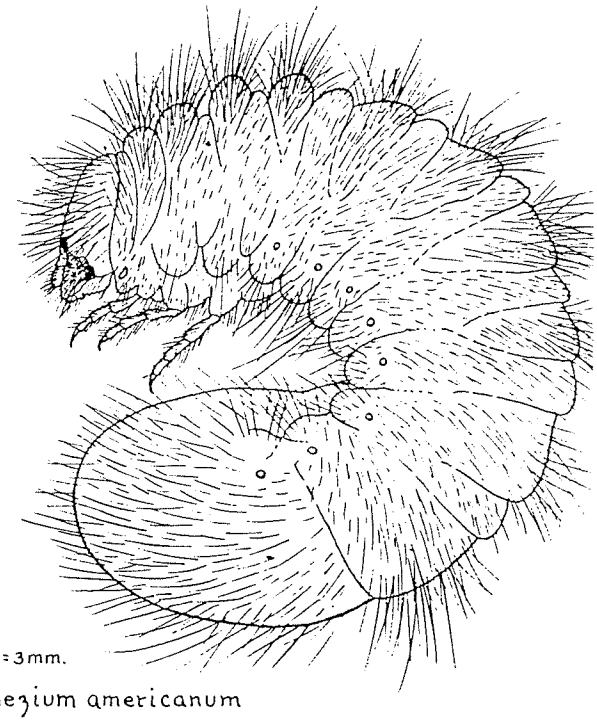
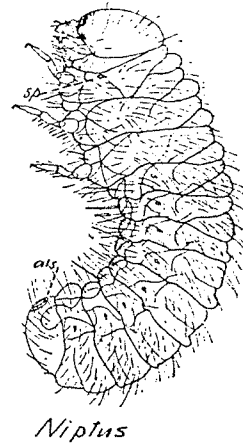
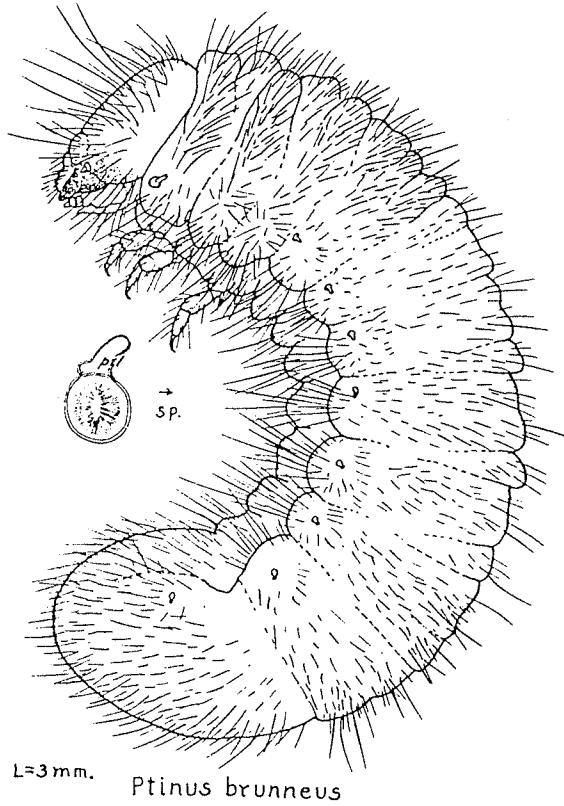
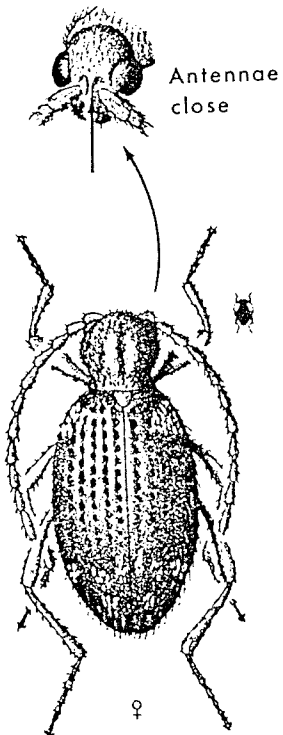
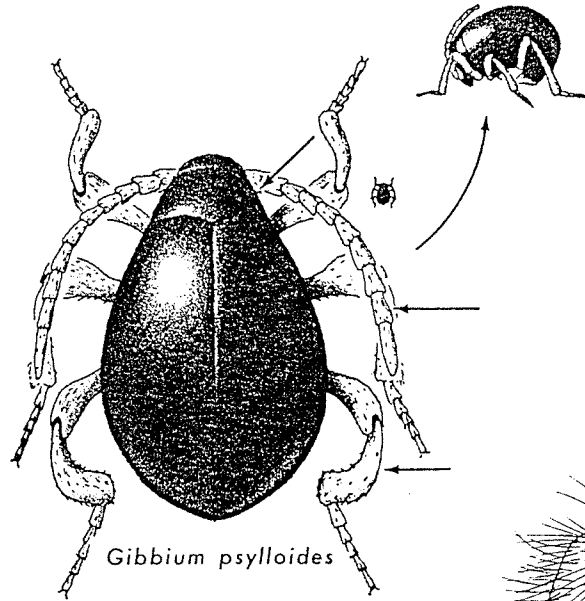
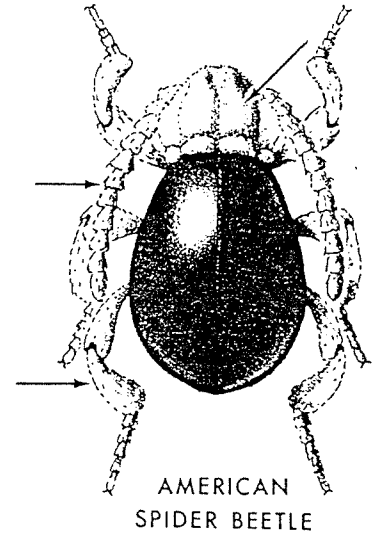
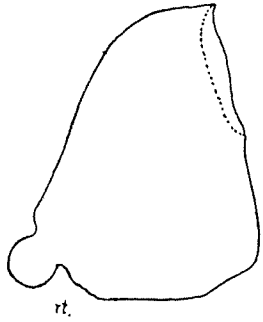
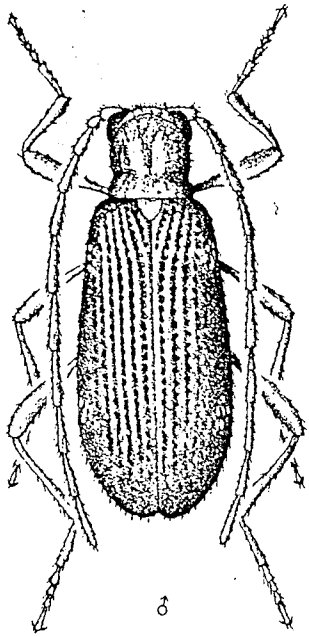
DRUG-STORE BEETLE

dorsal

L=4mm.

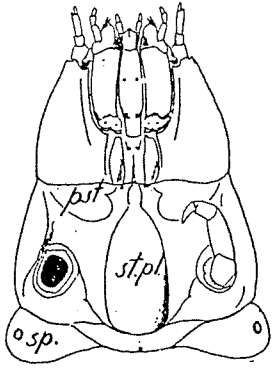
Order Coleoptera
 Suborder Polyphaga
 Superfamily Bostrichoidea

Family Ptinidae
 Spider Beetles



Order Coleoptera
 Suborder Polyphaga
 Superfamily Cleroidea

Family Trogossitidae
 Bark-gnawing Beetles



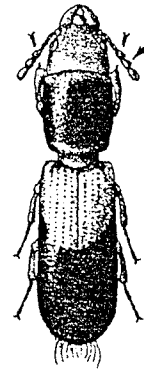
Airora



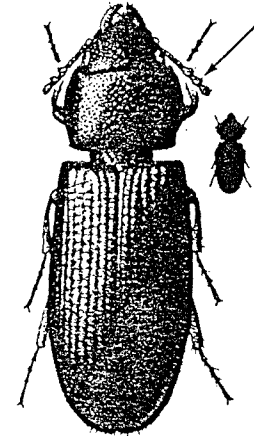
Airora cylindrica



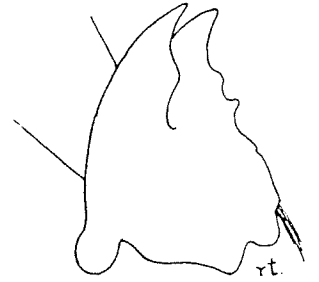
Ostoma



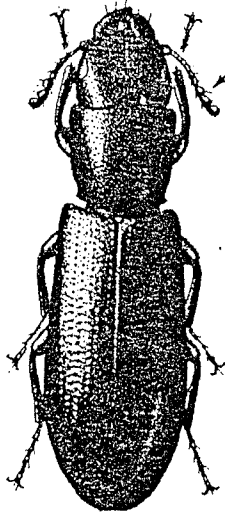
Corticotomus



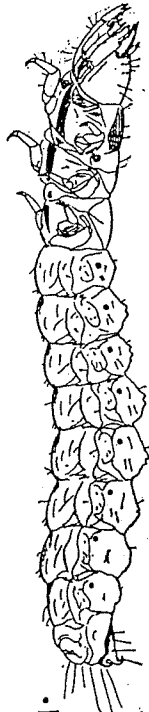
CADELLE



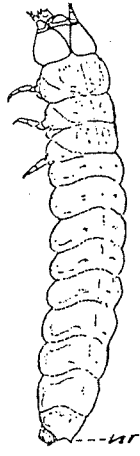
Airora



Temnochila



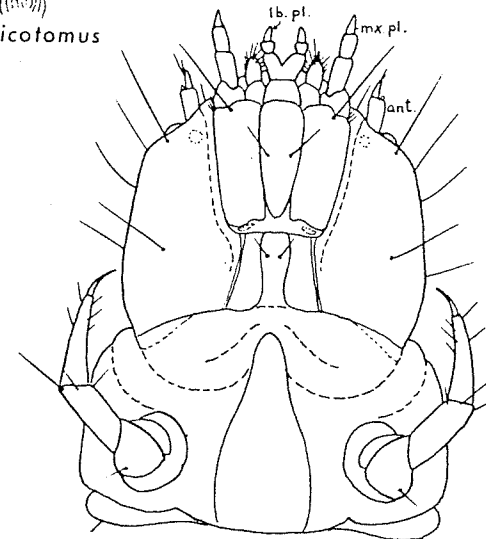
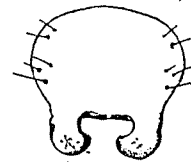
Temnochila



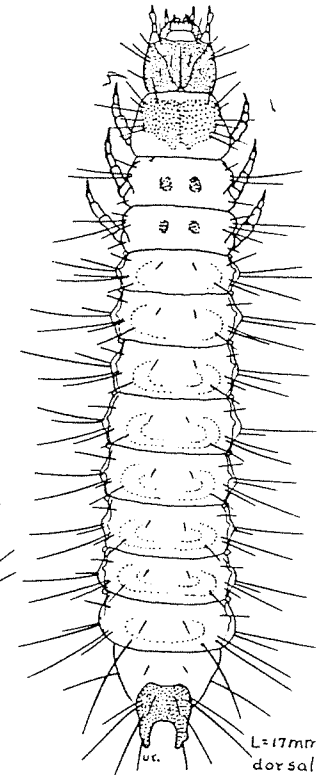
Ostoma



Corticotomus



Ostomidae
 CADELLE ventral

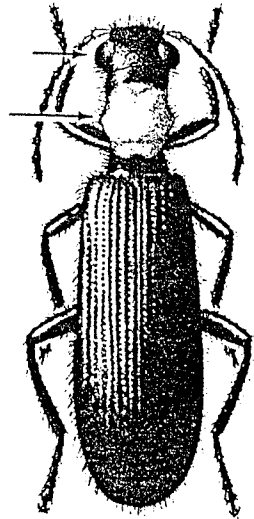
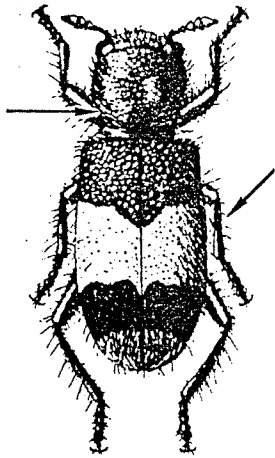


CADELLE

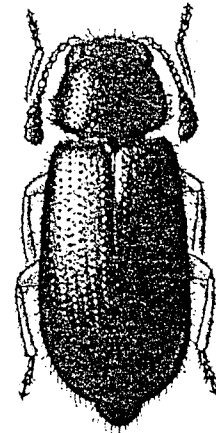
L=17mm
 dorsal

Order Coleoptera
Suborder Polyphaga
Superfamily Cleroidea

Family Cleridae
Checkered Beetles



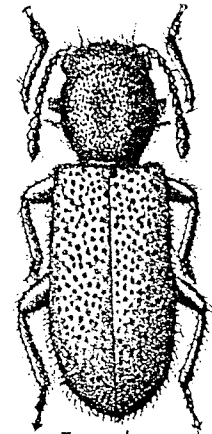
Cymatodera bicolor



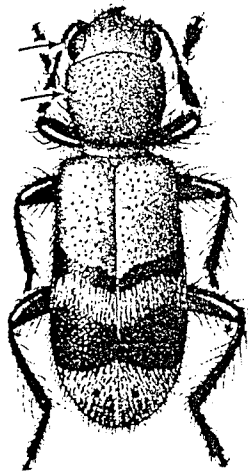
RED-
LEGGED
HAM
BEETLE



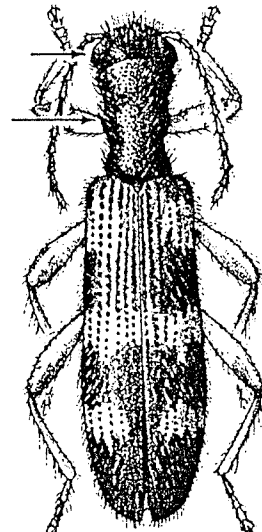
*Phlogistosternus
dislocatus*



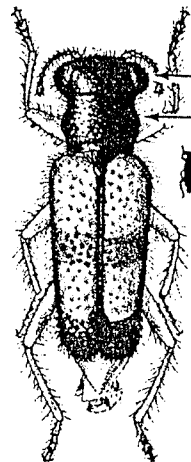
*Zenodosus
sanguineus*



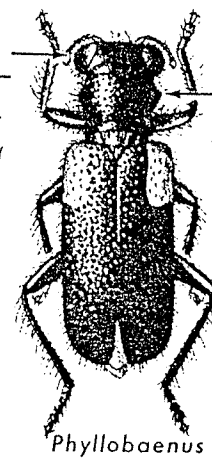
Enoclerus quadriguttatus



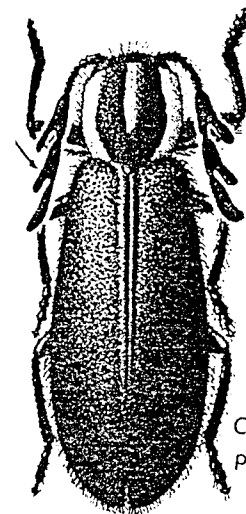
Cymatodera undulata



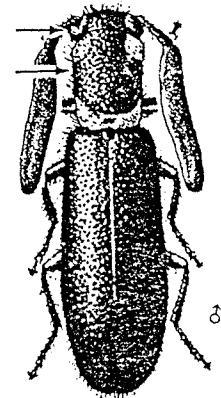
*Phyllobaenus
pallipennis*



*Phyllobaenus
humeralis*



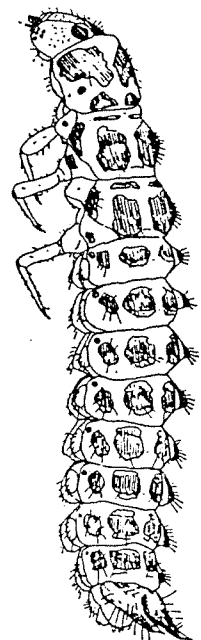
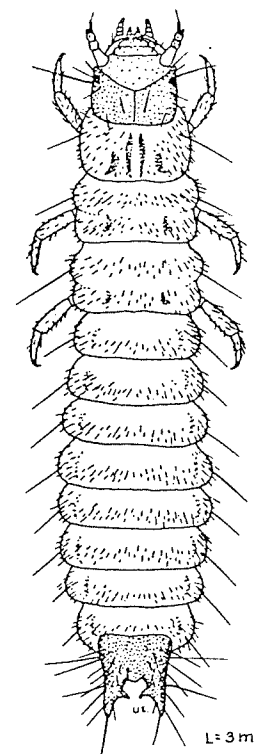
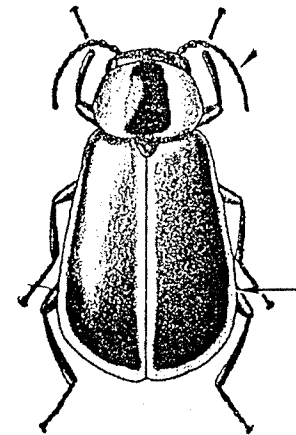
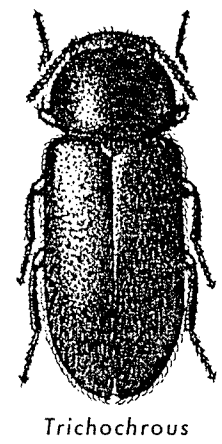
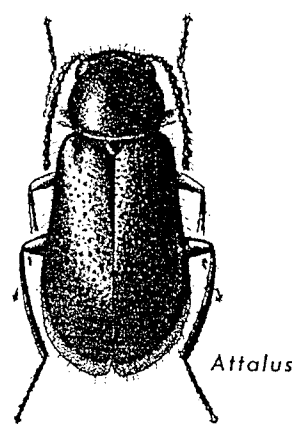
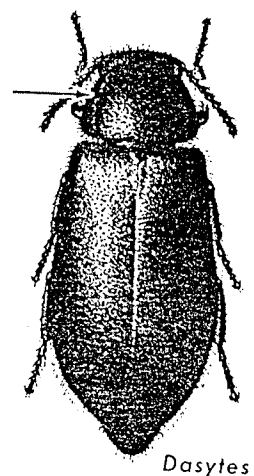
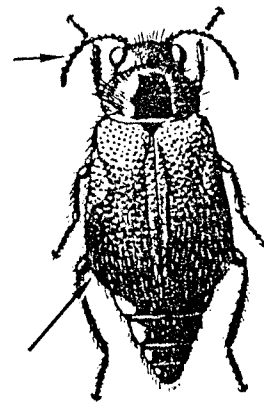
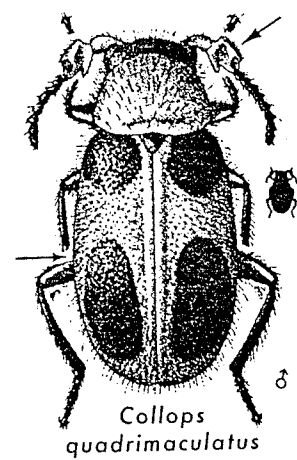
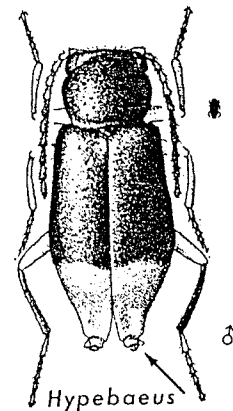
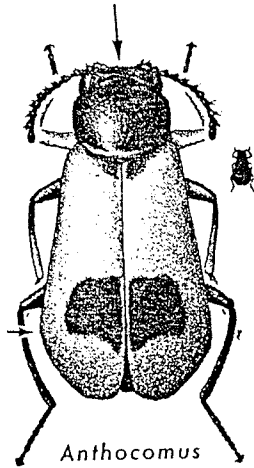
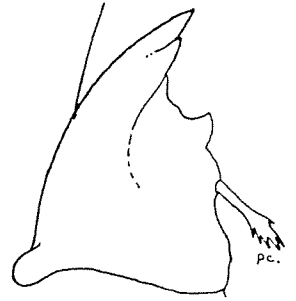
*Chariessa
pilosa*



*Monophylla
terminata*

Order Coleoptera
Suborder Polyphaga
Superfamily Cleroidea

Family Melyridae
Soft-winged flower Beetles



L=3mm.
Malachius sp.