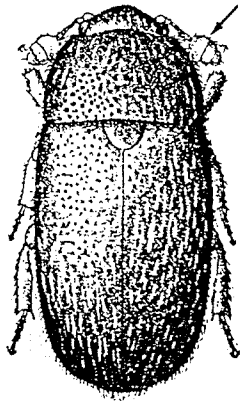
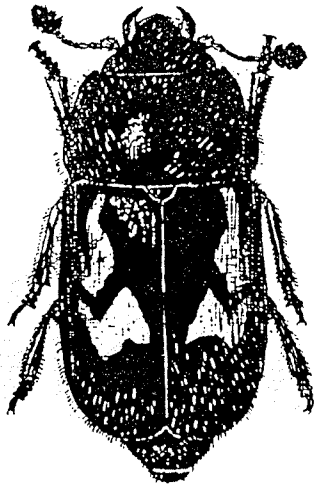


Order Coleoptera
 Suborder Polyphaga
 Superfamily Cucujoidea

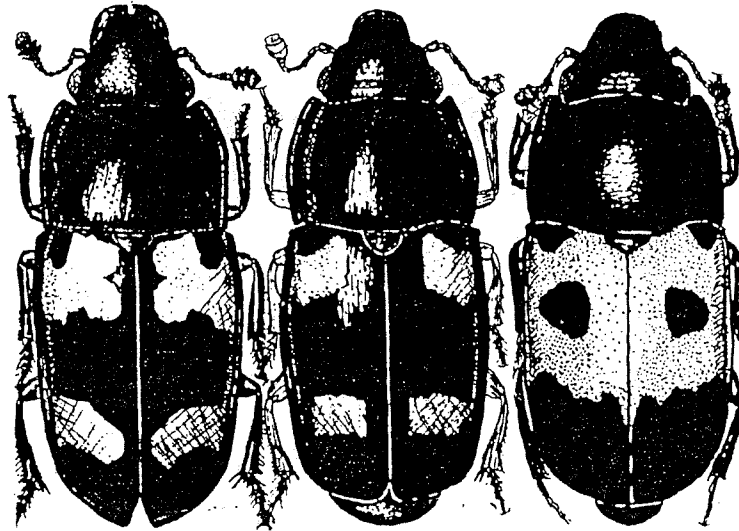
Family Nitidulidae
 Sap Beetles



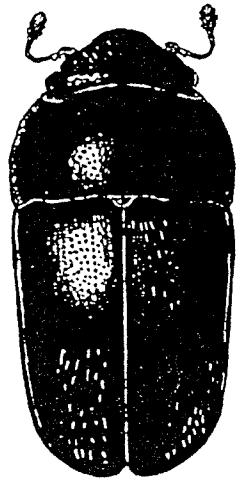
Thalyca



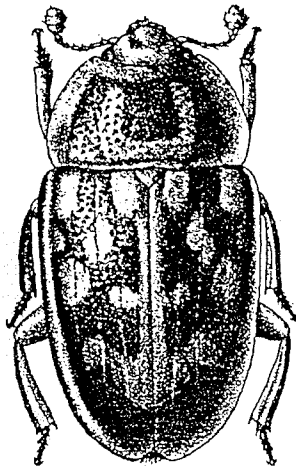
Nitidula ziczac



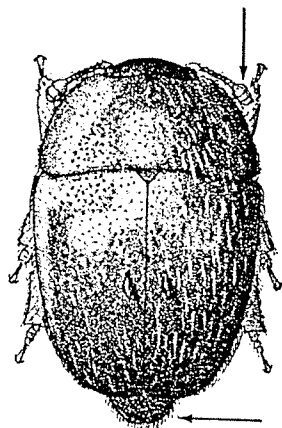
Glischrochilus



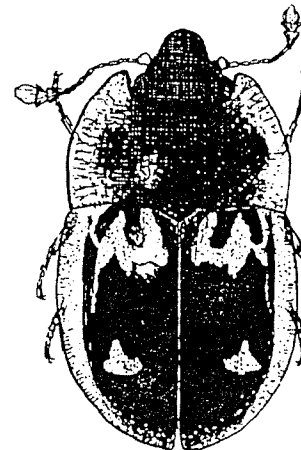
Cryptarcha ampla



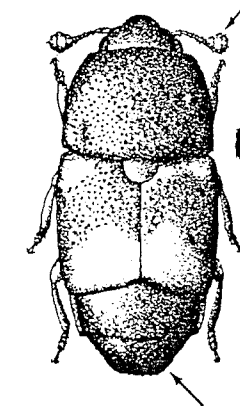
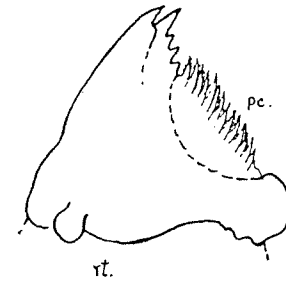
Phenolia grossa



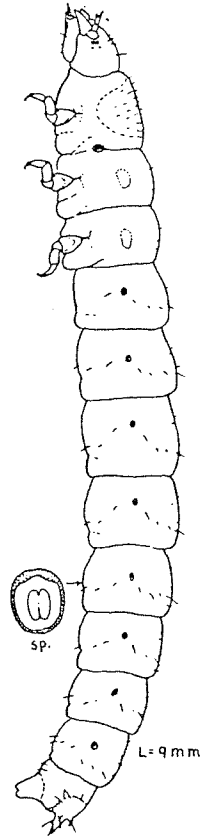
Amphicrossus ciliatus



Prometopia sexmaculata



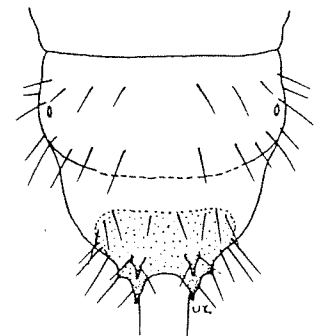
DRIED-FRUIT BEETLE



DRIED-FRUIT BEETLE



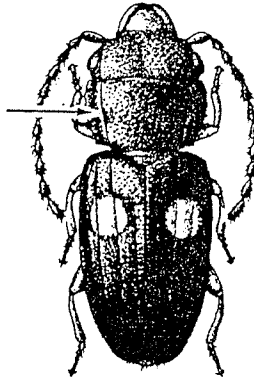
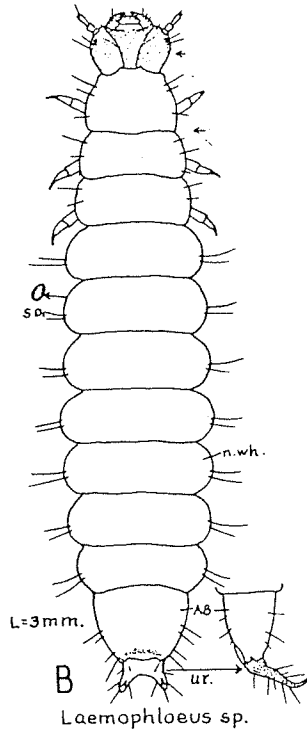
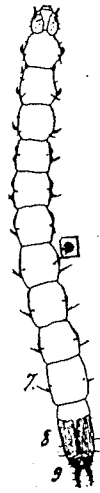
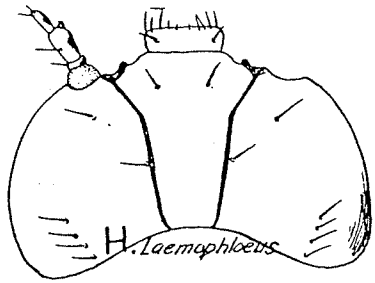
Conotelus obscurus



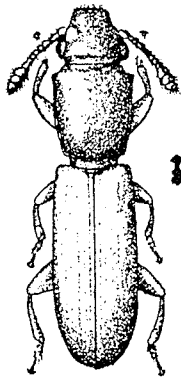
DRIED-FRUIT BEETLE

Order Coleoptera
 Suborder Polyphaga
 Superfamily Cucujoidea

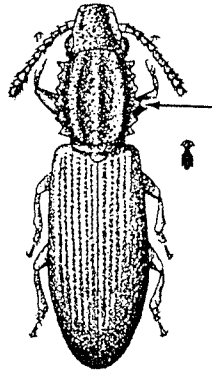
Family Cucujidae
 Flat-bark Beetles



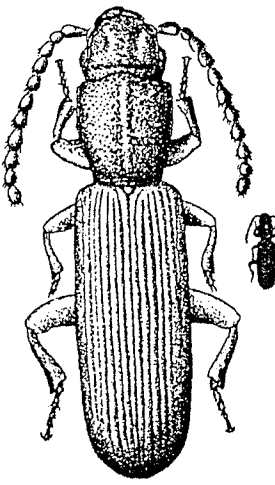
Laemophloeus



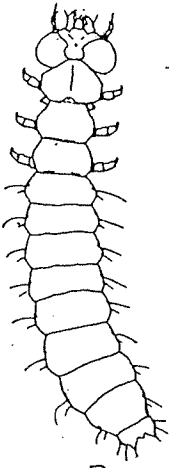
SQUARE-NECKED
GRAIN BEETLE



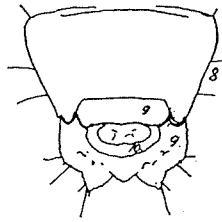
SAW-TOOTHED
GRAIN BEETLE



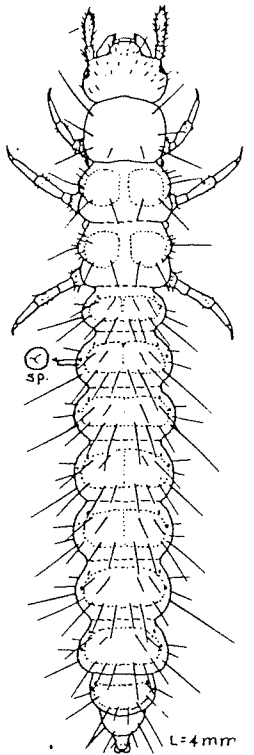
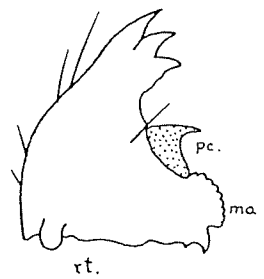
Catogenus rufus



Prostomis



A. Prostomis

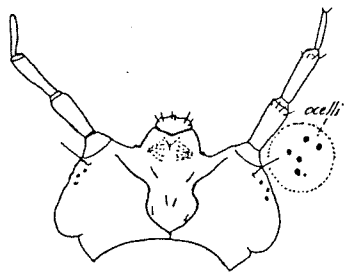


SAW-TOOTHED
GRAIN BEETLE

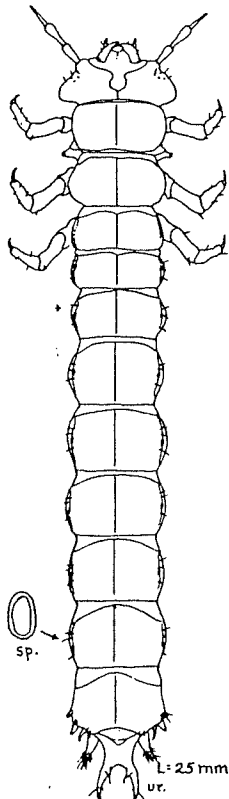
L=4mm

Order Coleoptera
 Suborder Polyphaga
 Superfamily Cucujoidea

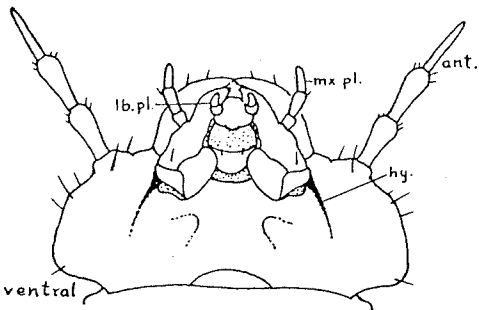
Family Cucujidae
 Flat-bark Beetles



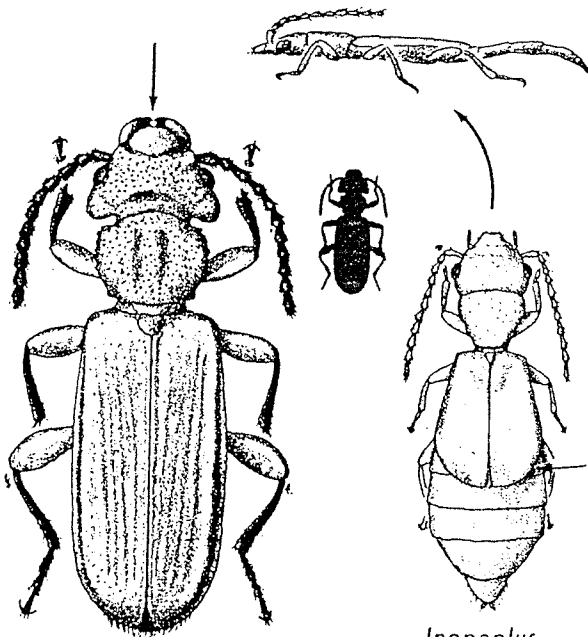
Cucujus



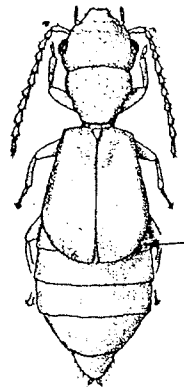
Cucujus clavipes



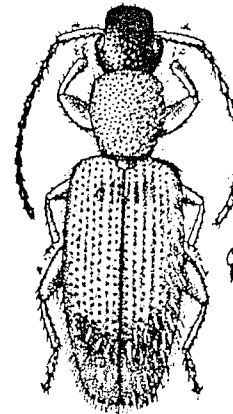
Cucujus clavipes



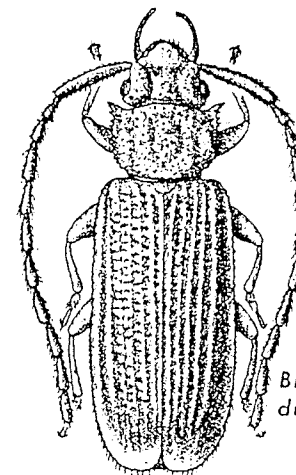
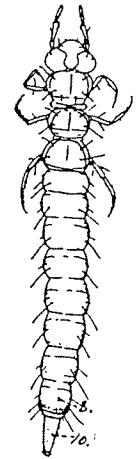
Cucujus clavipes



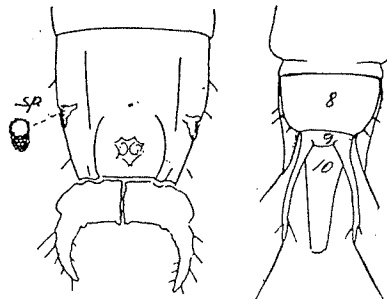
Inopeplus



Telephanus velox



Brontes dubius

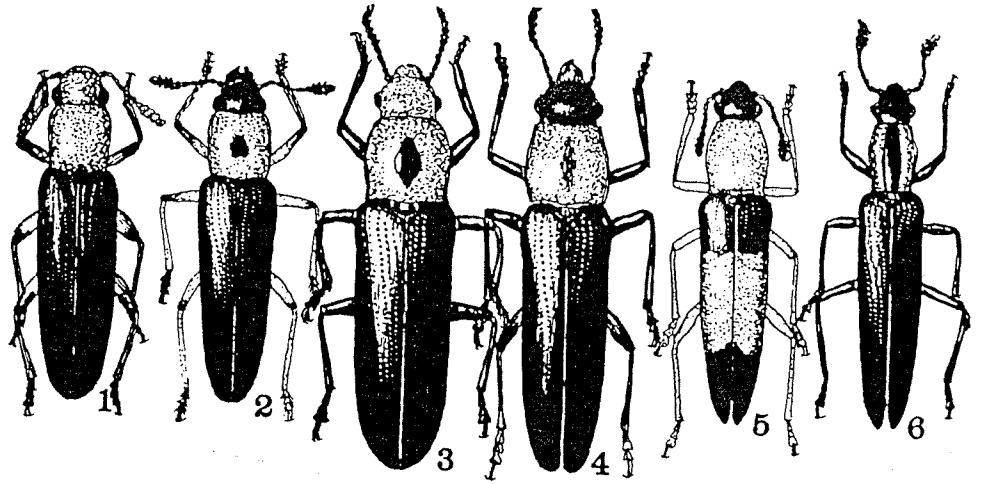
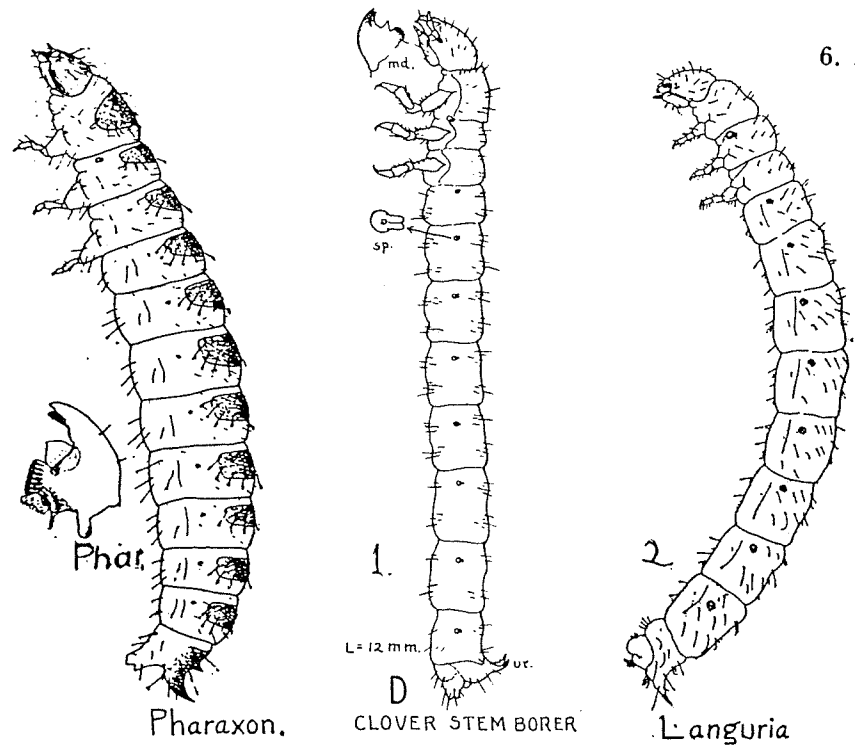
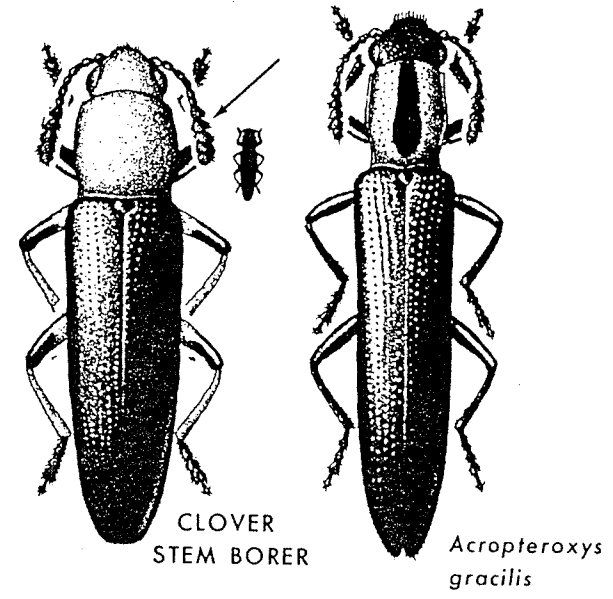
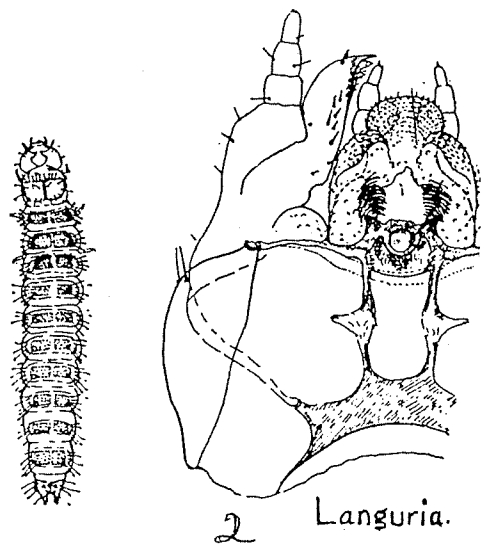


Hemipeplus Brontes

Order Coleoptera
 Suborder Polyphaga
 Superfamily Cucujoidea

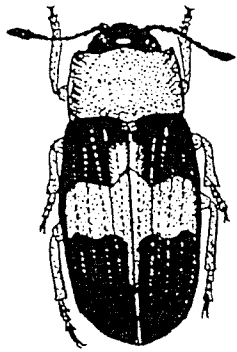
Family Languriidae
 Lizard Beetles

1. *Languria mozardi* Latreille
2. *L. angustata* (Beauvois)
3. *L. bicolor* (Fabricius)
4. *L. taedata* LeConte
5. *L. trifasciata* Say
6. *Acropteroxys gracilis* Newman

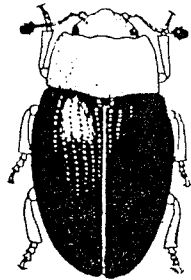


Order Coleoptera
 Suborder Polyphaga
 Superfamily Cucujoidea

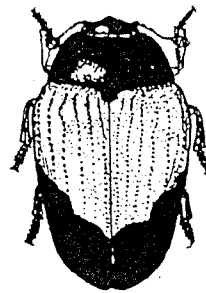
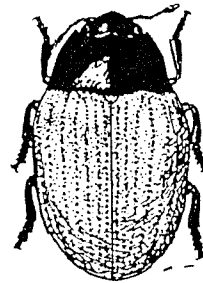
Family Erotylidae
 Pleasing fungus Beetles



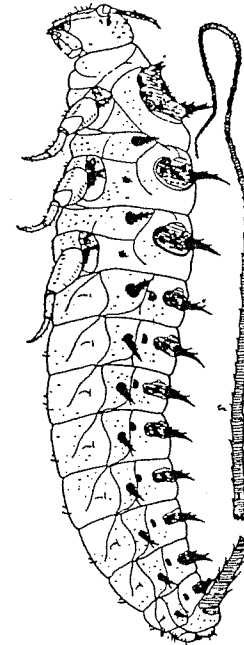
Triplax festiva



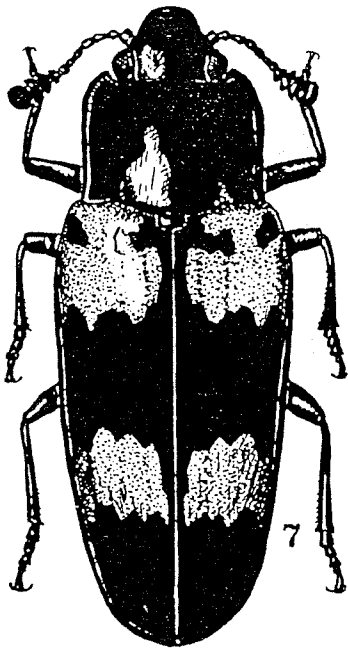
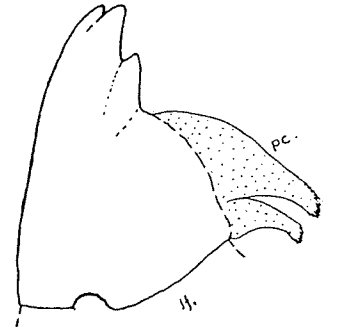
Triplax flavicollis



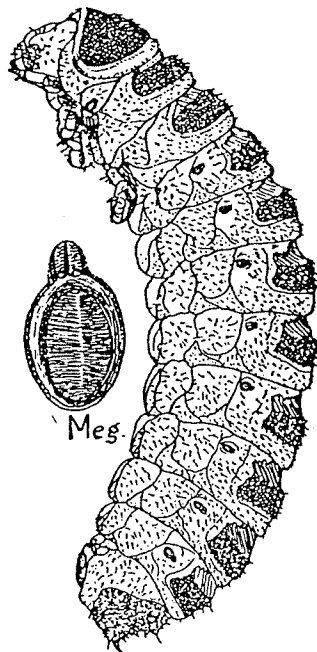
Tritoma



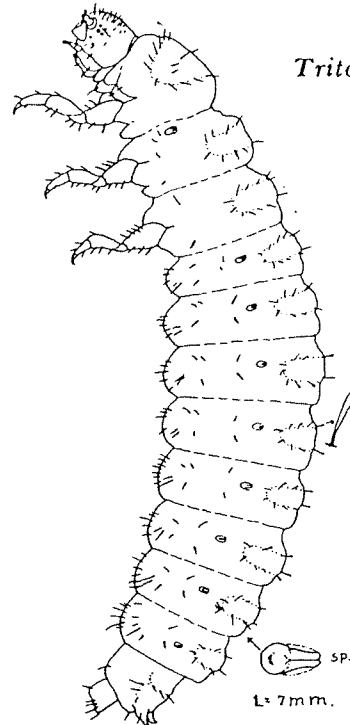
Homocotelus



Megalodacne heros



Meg.

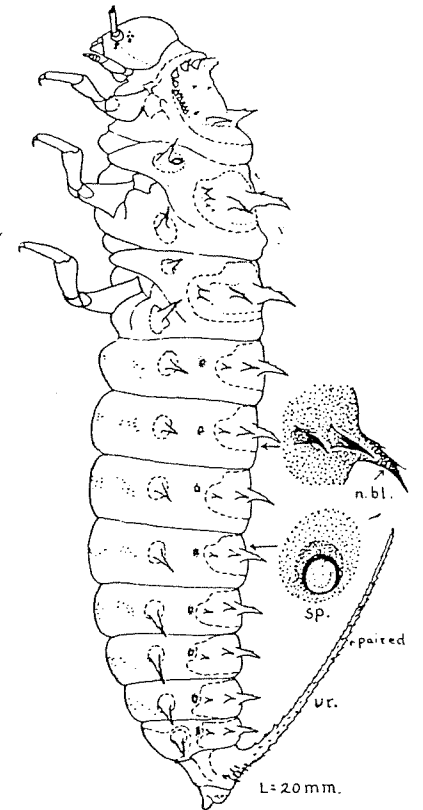


Tritoma sp.

L = 7mm.



Ischyryus quadripunctatus



herotylus boisduvali

L = 20mm.

n.bl.

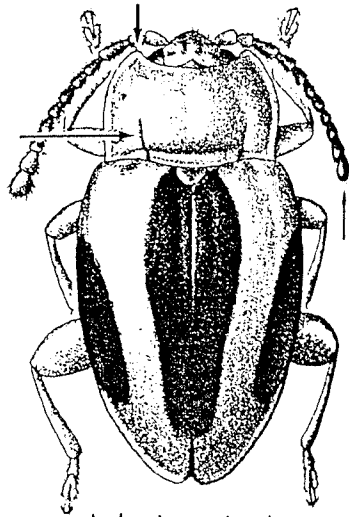
SP.

paired

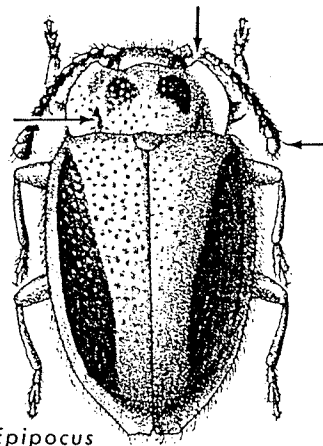
ur.

Order Coleoptera
 Suborder Polyphaga
 Superfamily Cucujoidea

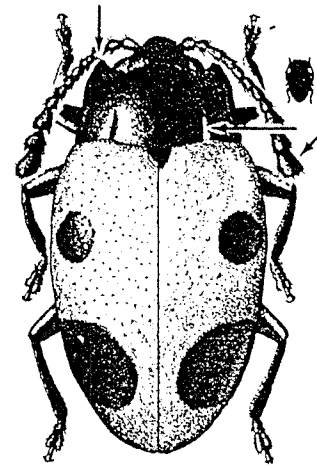
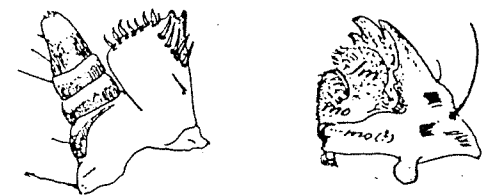
Family Endomychidae
 Handsom fungus Beetles



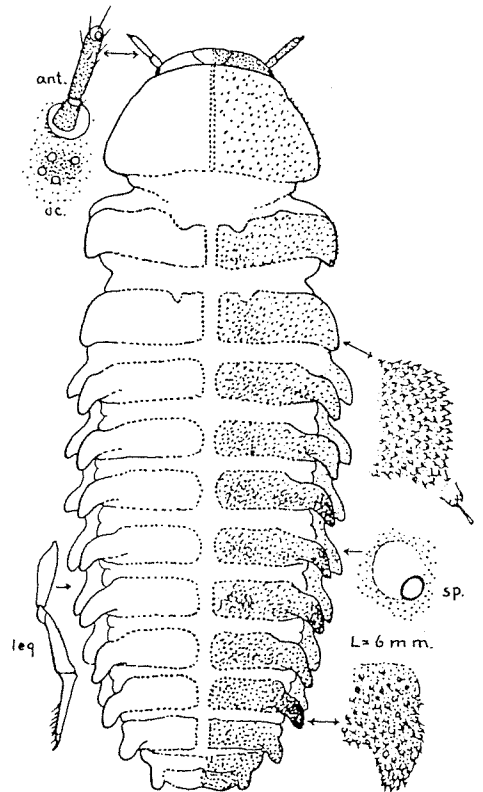
Aphorista vittata



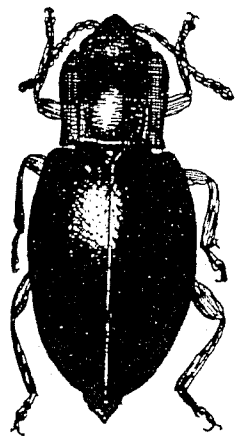
Epipocus



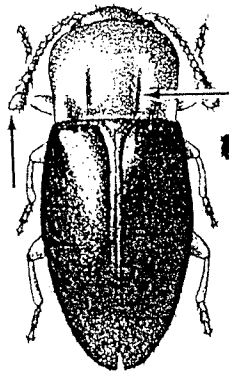
Endomychus biguttatus



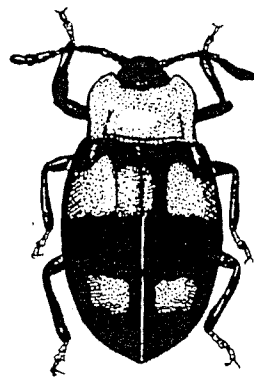
Endomychus biguttatus



Lycoperdina ferruginea



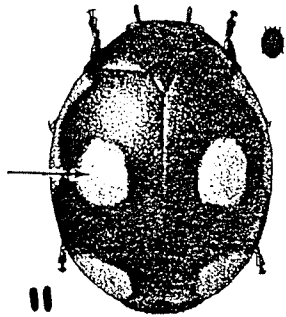
Rhanidea unicolor



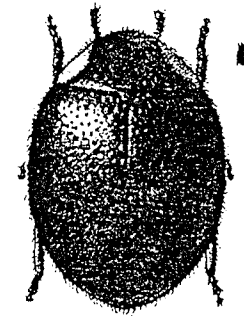
Mycetina perpulchra

Order Coleoptera
Suborder Polyphaga
Superfamily Cucujoidea

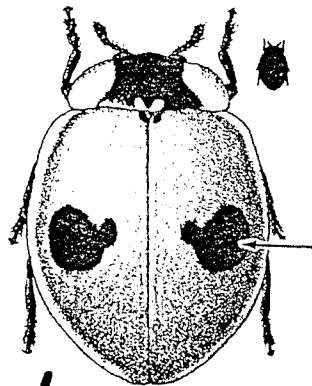
Family Coccinellidae
Lady-bird Beetles



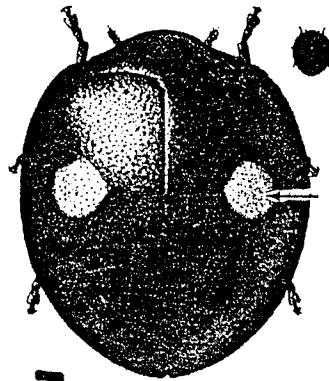
11
LATERAL LADY BEETLE
(Hyperaspini)



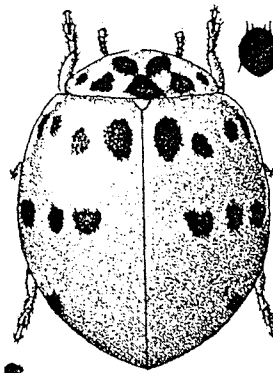
12
Scymnus socer
(Scymnini)



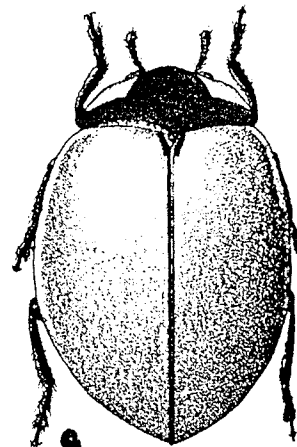
6
TWO-SPOTTED
LADY BEETLE



7
TWICE-STABBED
LADY BEETLE
(Chilocorini)



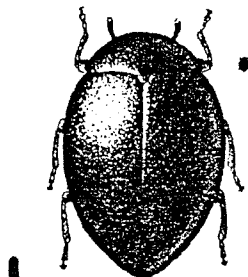
8
ASHY GRAY LADY BEETLE
(Synonychini)



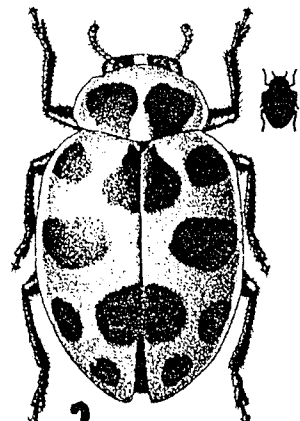
9
CALIFORNIA
LADY BEETLE
(Coccinellini)



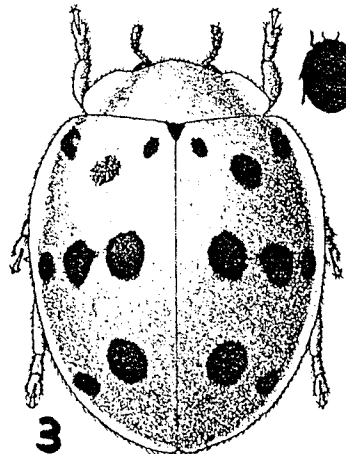
10
MEALYBUG DESTROYER
(Scymnini)



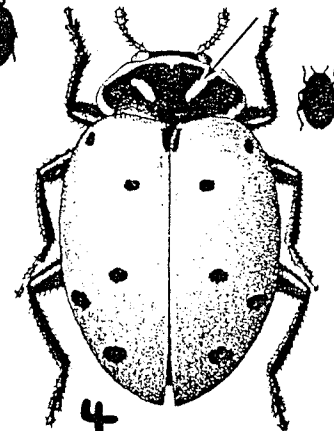
1
Microwisea misella
(Microweisini)



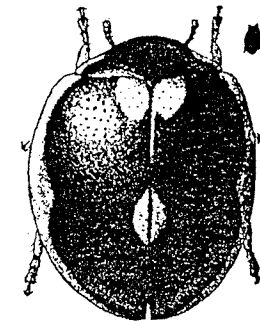
2
SPOTTED LADY BEETLE
(Coccinellini)



3
MEXICAN BEAN BEETLE
(Epilachnini)



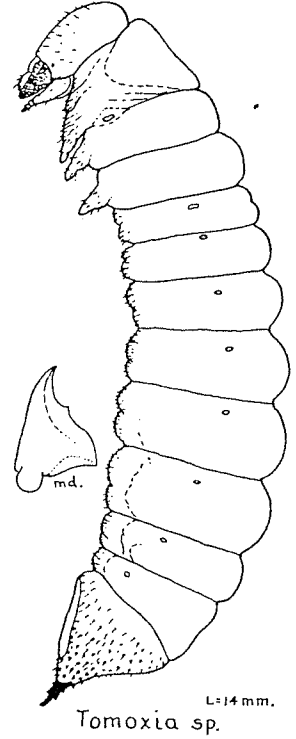
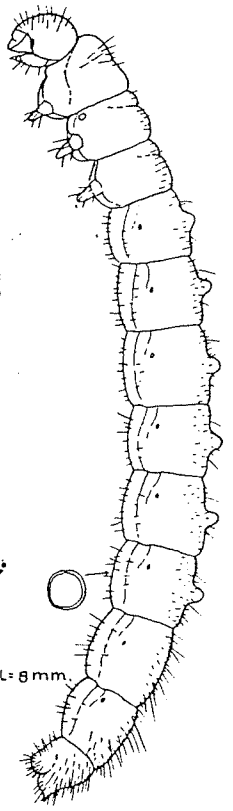
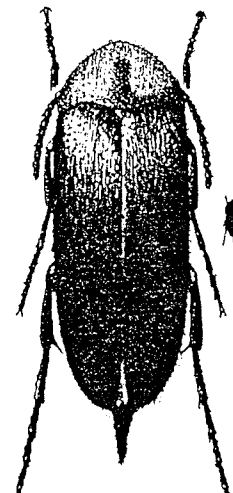
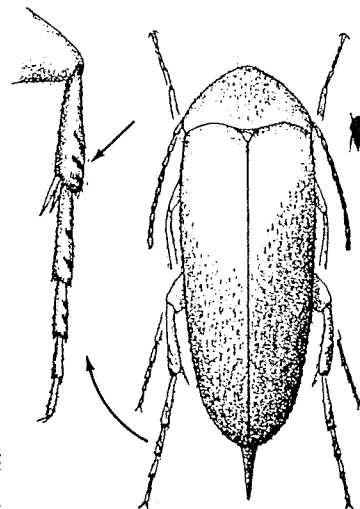
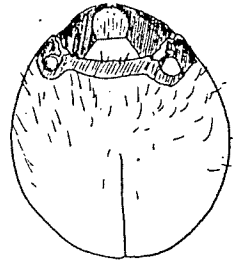
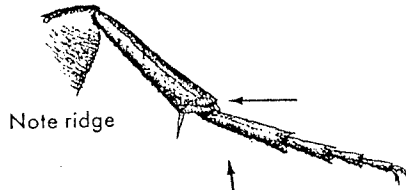
4
CONVERGENT LADY BEETLE



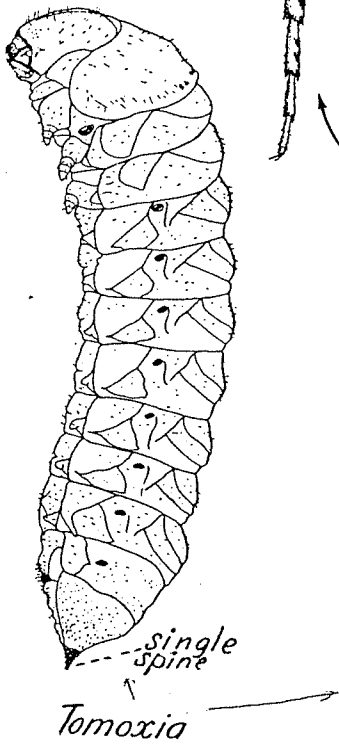
5
VARIABLE LADY BEETLE
(Chilocorini)

Order Coleoptera
 Suborder Polyphaga
 Superfamily Tenebrionoidea

Family Mordellidae
 Tumbling flower Beetles



L=14 mm.



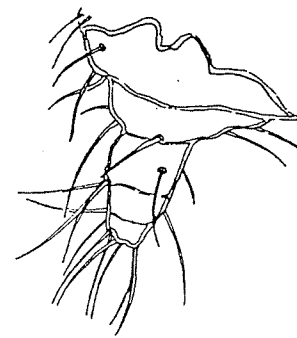
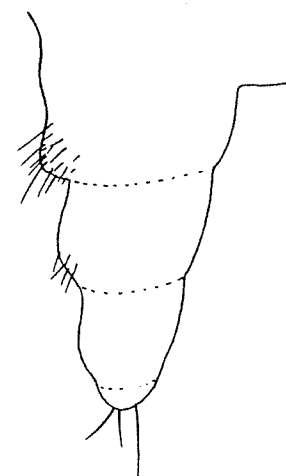
Mordellistena

Mordellistena

Mordellistena

L=8 mm.

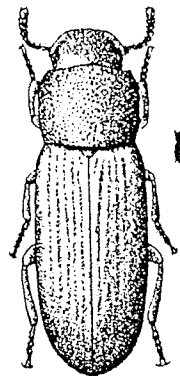
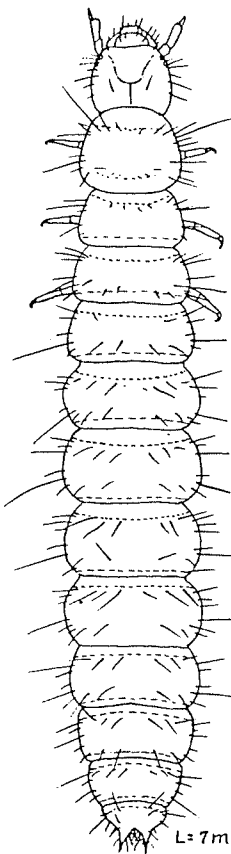
Mordellistena sp.



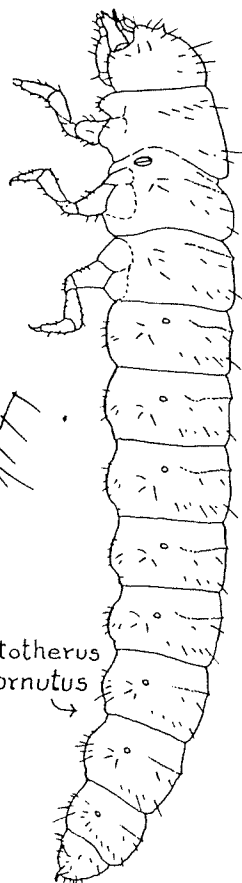
Mordellistena

Order Coleoptera
 Suborder Polyphaga
 Superfamily Tenebrionoidea

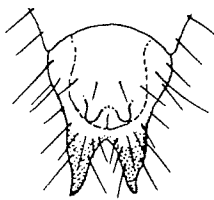
Family Tenebrionidae
 Darkling Beetles



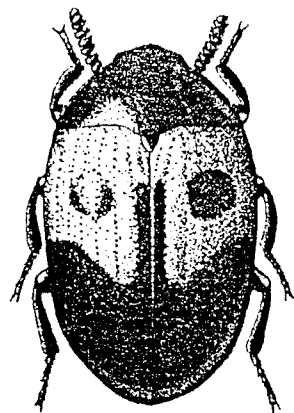
CONFUSED
 FLOUR BEETLE



L=7mm.
 CONFUSED
 FLOUR BEETLE



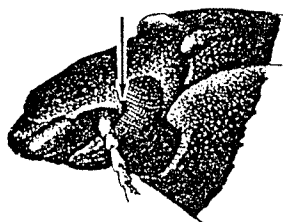
ventral



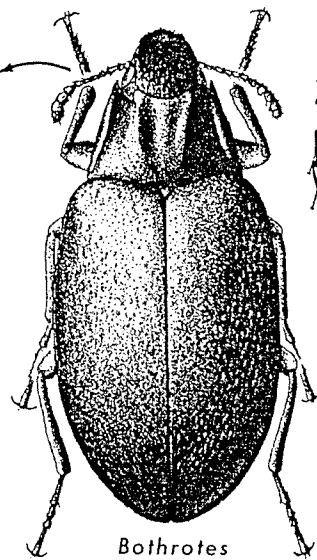
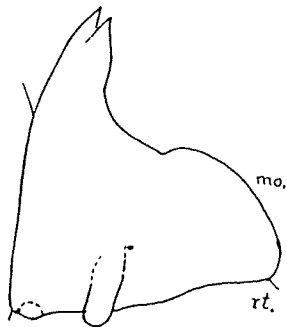
Diaperis

Bolitotherus
 cornutus

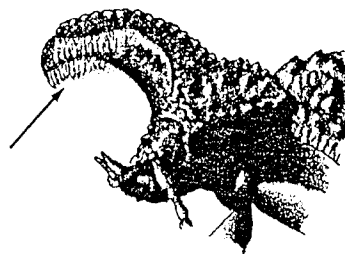
L=19mm



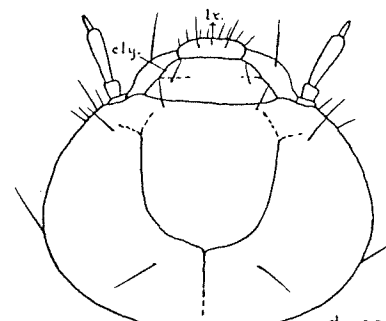
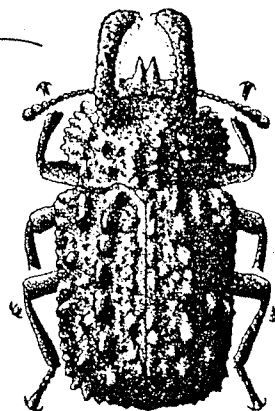
Note notched eye



Bothriotes
 (Tentyriinae)

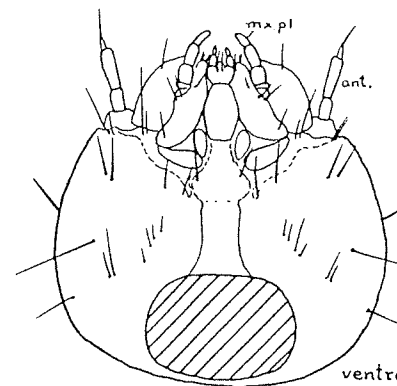


FORKED FUNGUS BEETLE



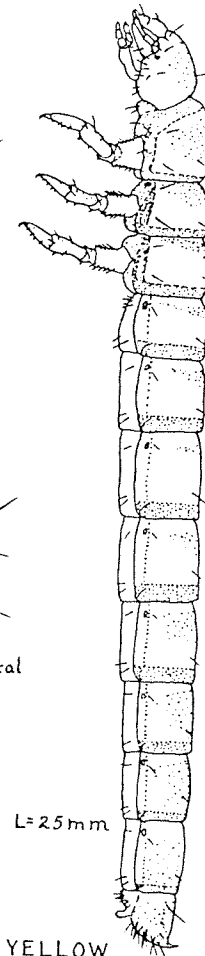
Tenebrio molitor

dorsal



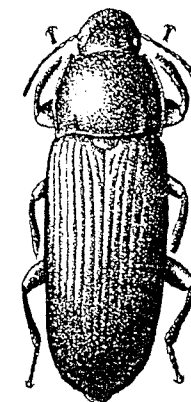
Tenebrio molitor

ventral



L=25mm

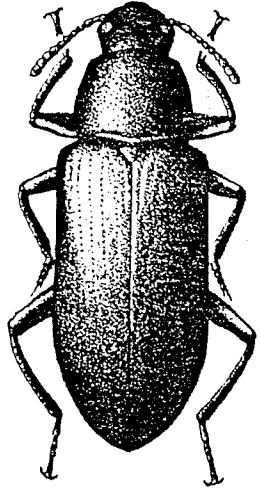
YELLOW
 MEALWORM



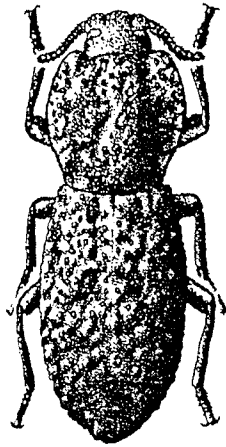
YELLOW MEALWORM

Order Coleoptera
 Suborder Polyphaga
 Superfamily Tenebrionoidea

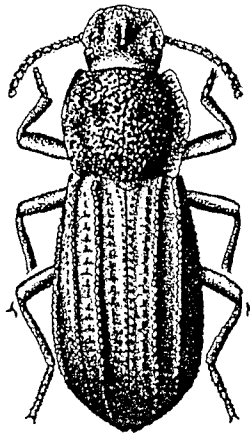
Family Tenebrionidae
 Darkling Beetles



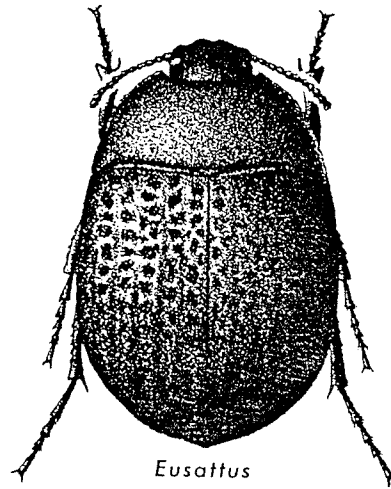
Alobates pennsylvanica



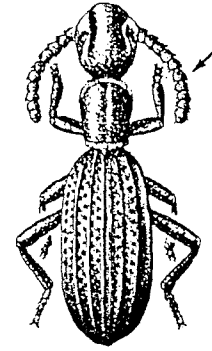
Phloeodes diabolicus



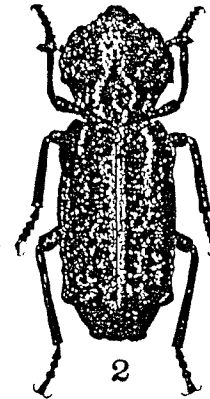
Nyctoporis carinata



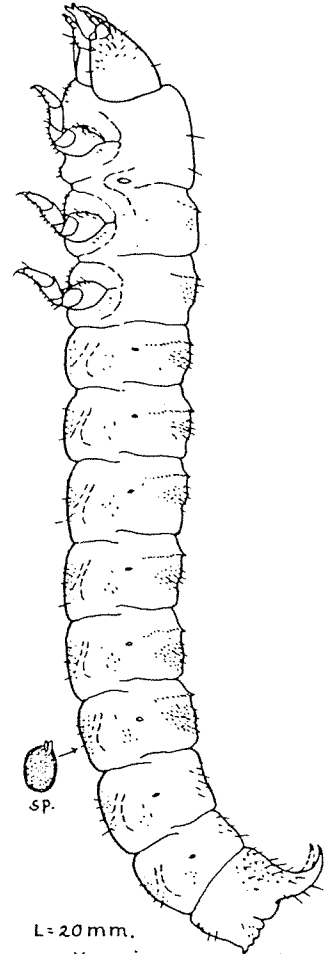
Eusattus



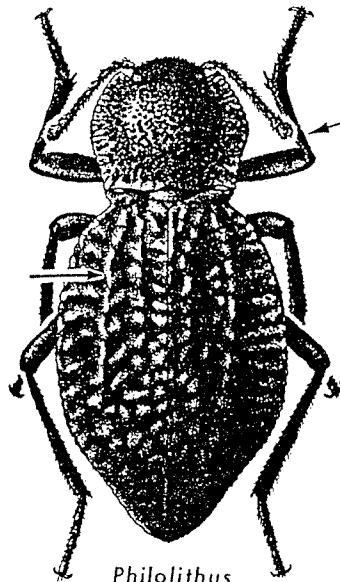
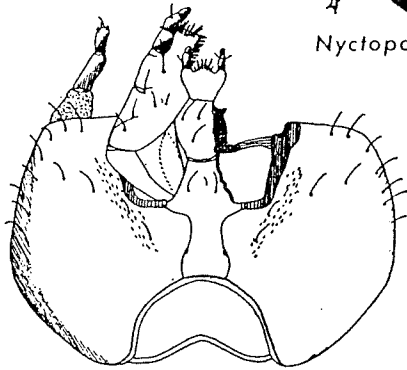
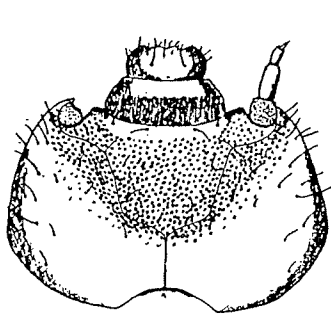
Araeoschizus



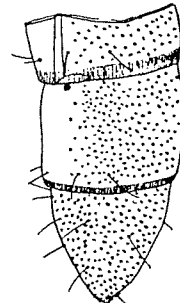
Phellopsis obcordata



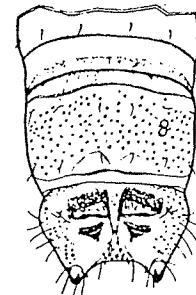
L=20 mm.
Phellopsis obcordata



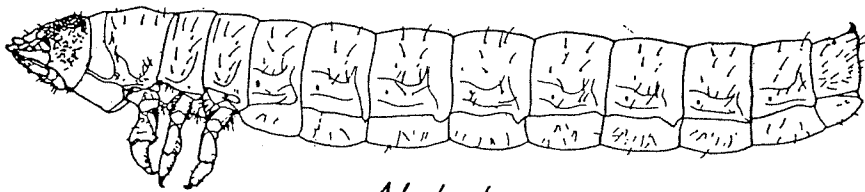
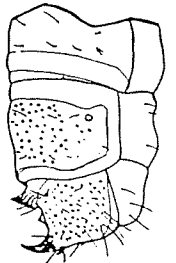
Philolithus



Gnathocerus



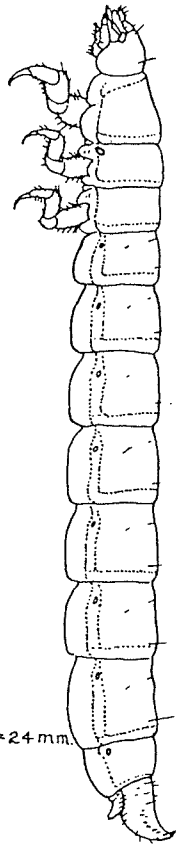
Strongylium



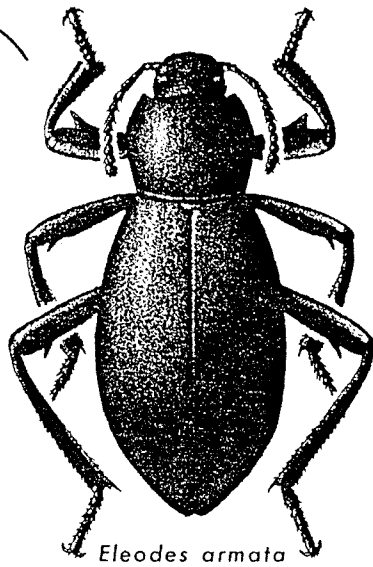
Alobates

Order Coleoptera
 Suborder Polyphaga
 Superfamily Tenebrionoidea

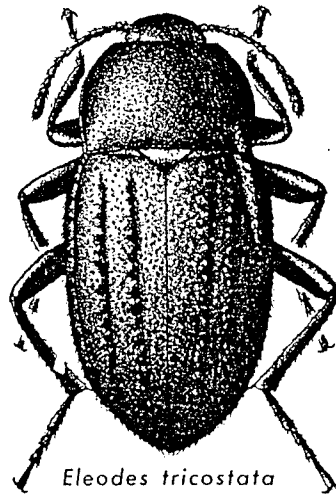
Family Tenebrionidae
 Darkling Beetles



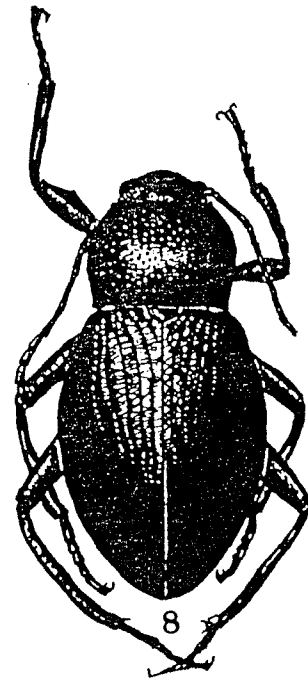
L=24 mm.



Eleodes armata

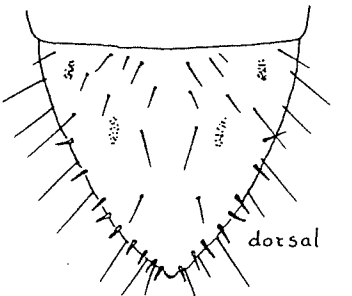
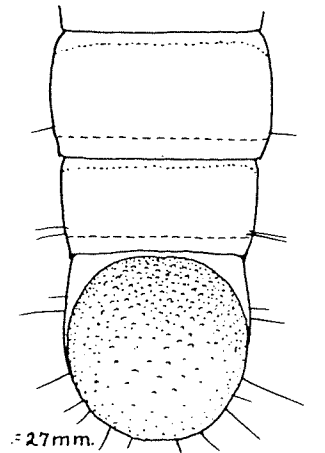
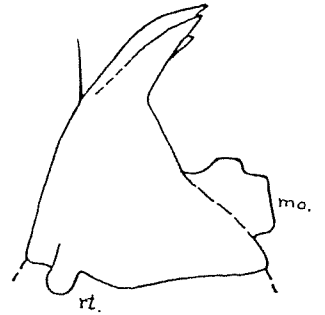


Eleodes tricostata

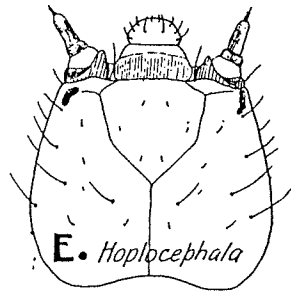
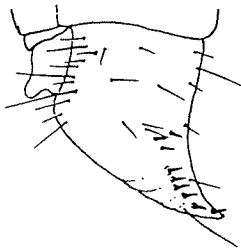


L=27 mm.

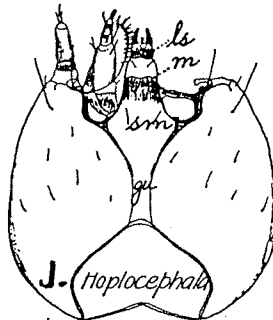
Meracantha contracta



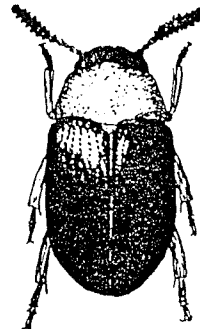
PLAINS FALSE WIREWORM



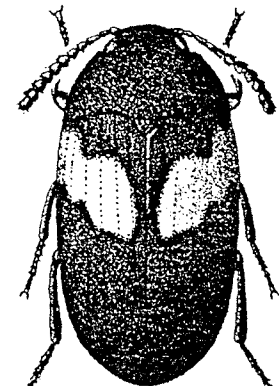
E. Hoplocephala



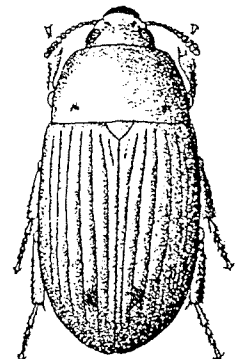
J. Hoplocephala



Hoplocephala



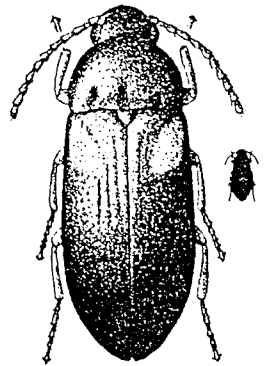
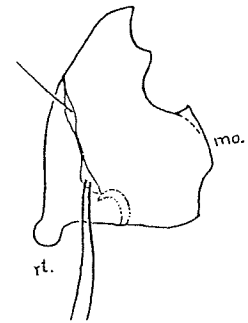
Platydemus



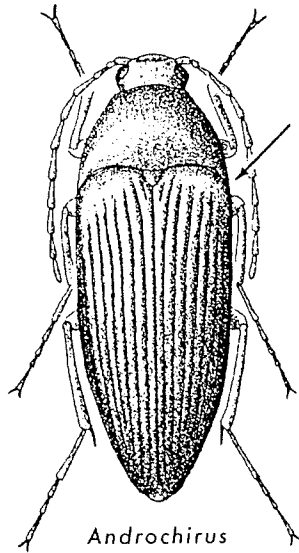
Phaleria

Order Coleoptera
 Suborder Polyphaga
 Superfamily Tenebrionoidea

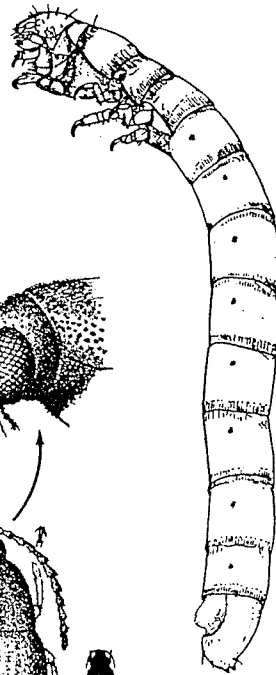
Family Alleculidae
 Comb-clawed Beetles



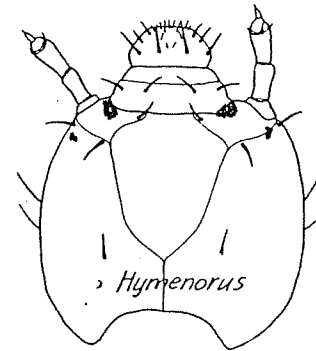
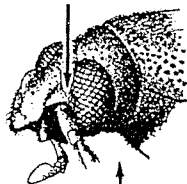
Mycetochara fraterna



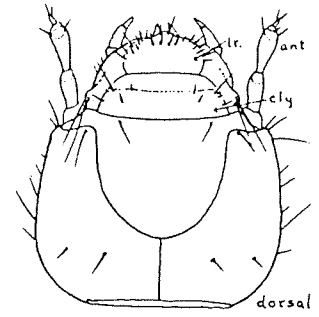
Androchirus



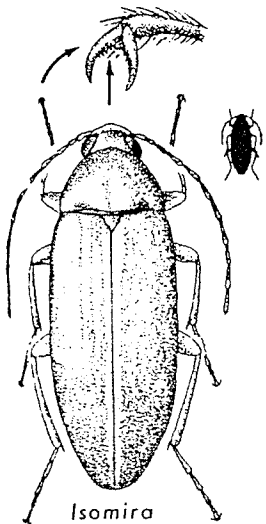
Omophilus



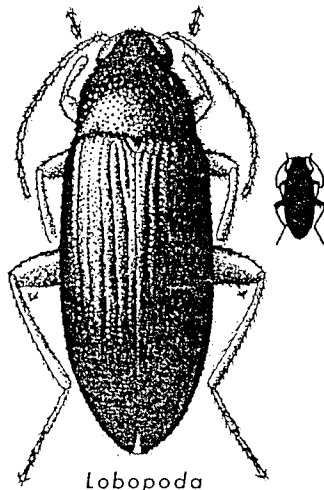
Hymenorus



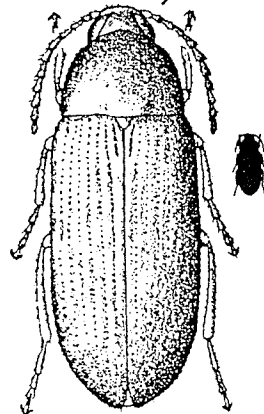
Capnochlora fuliginosa



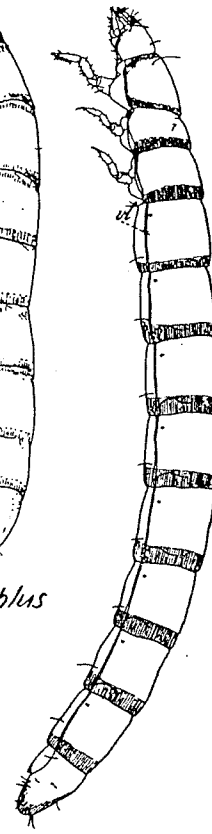
Isomira



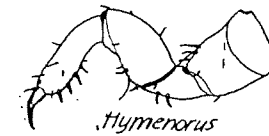
Lobopoda



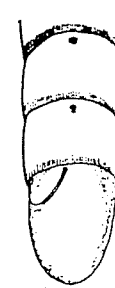
Hymenorus



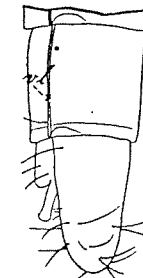
Capnochlora



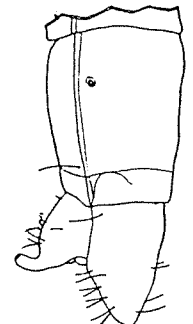
Hymenorus



Cteniopus



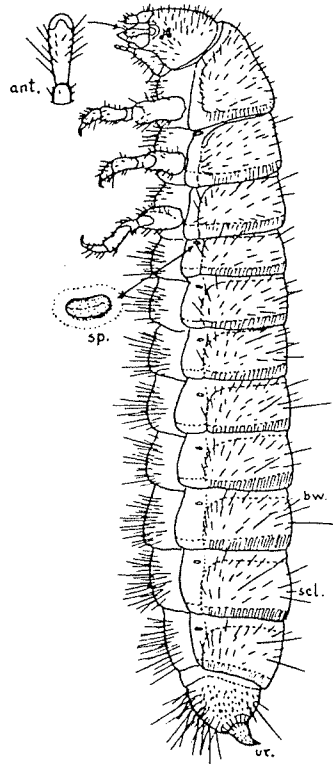
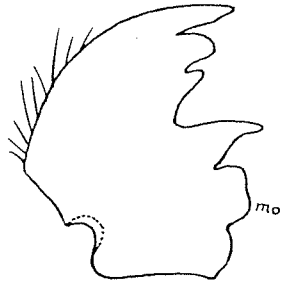
Hymenorus



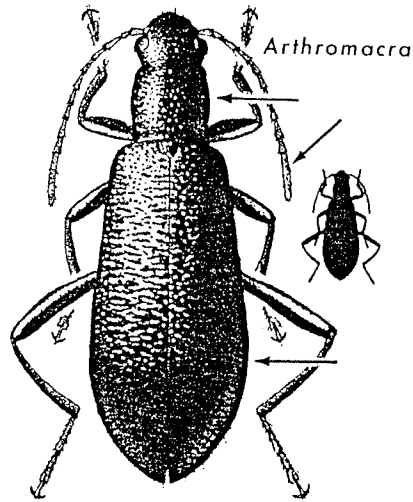
Mycetochara

Order Coleoptera
Suborder Polyphaga
Superfamily Tenebrionoidea

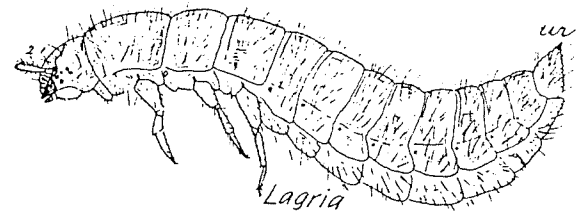
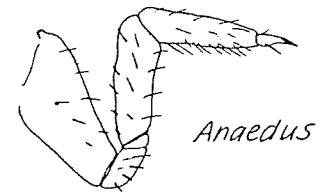
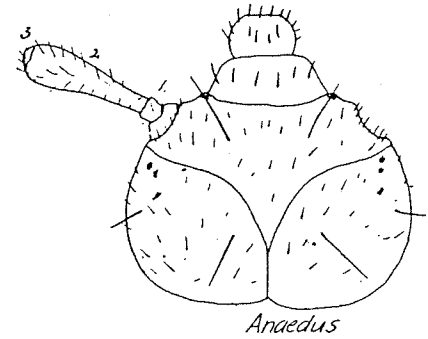
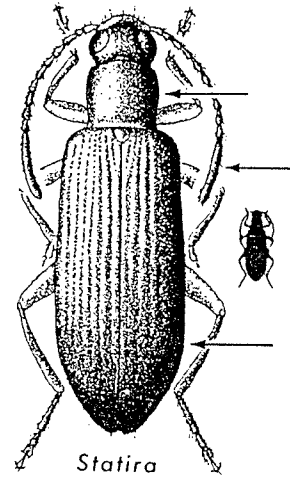
Family Lagriidae
Long-jointed bark Beetles



Arthromacra sp.

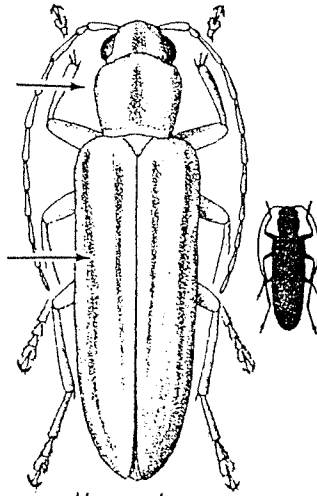


Arthromacra sp.

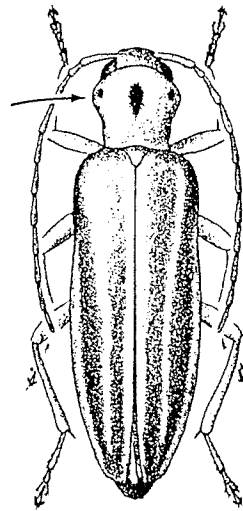


Order Coleoptera
 Suborder Polyphaga
 Superfamily Tenebrionoidea

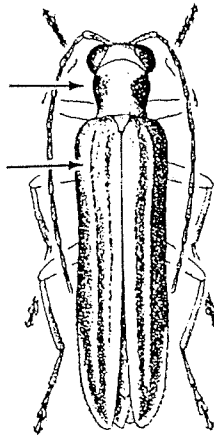
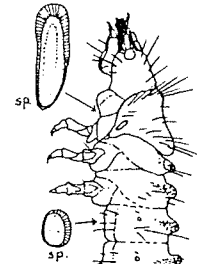
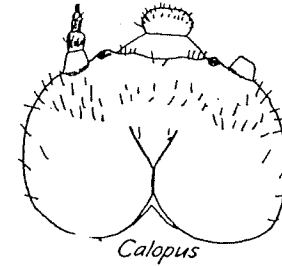
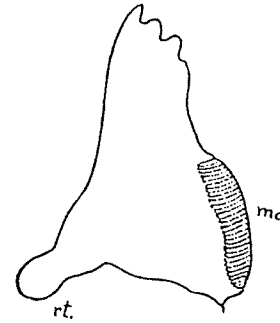
Family Oedemeridae
 False Blister Beetles



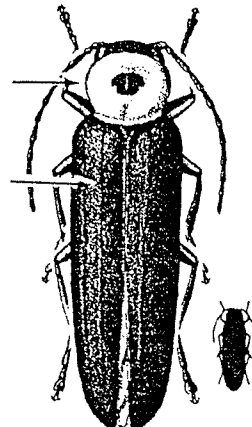
Hypasclera dorsalis



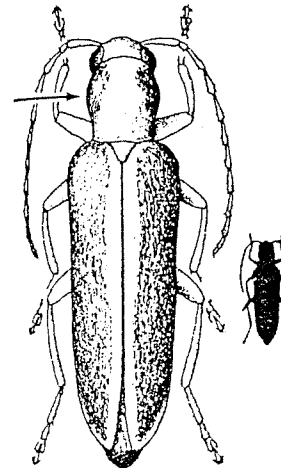
Oxacis laeta



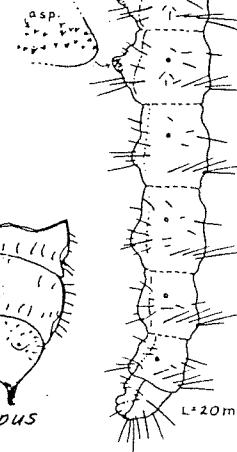
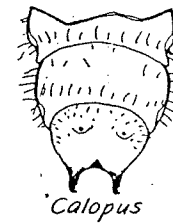
Xanthochroa



Asclera



Oxycopis

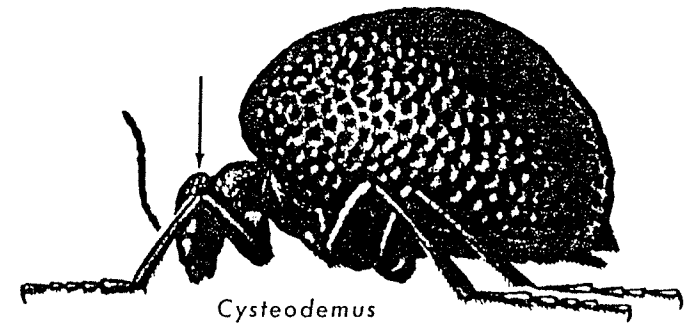
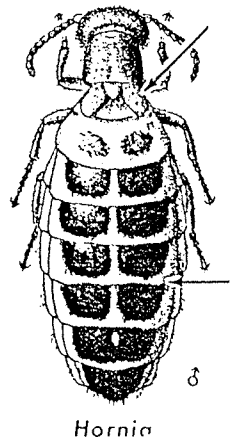
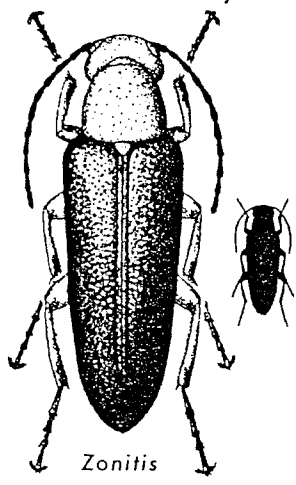
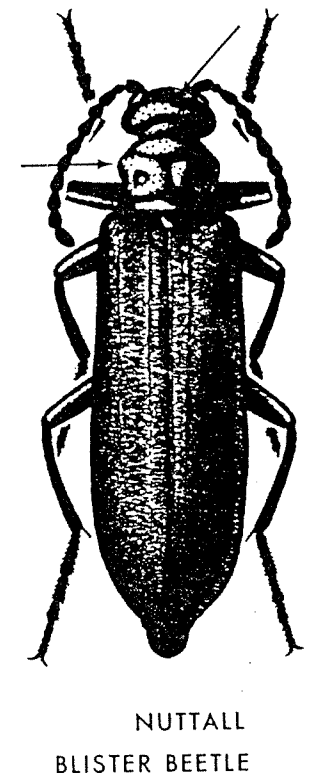
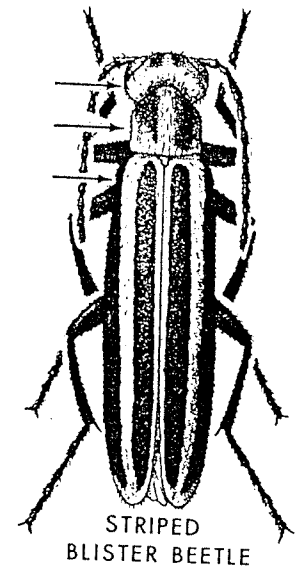
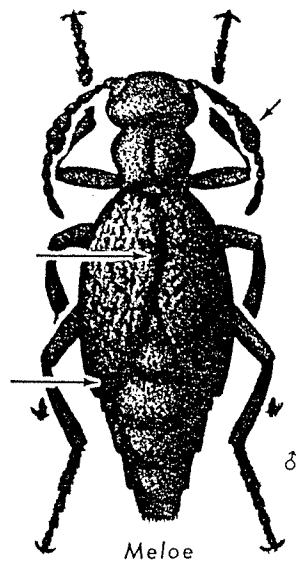
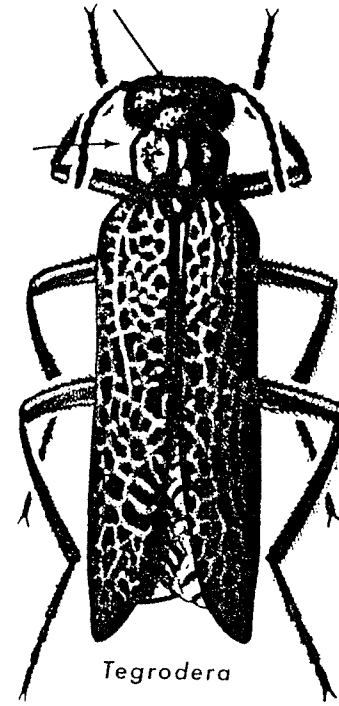
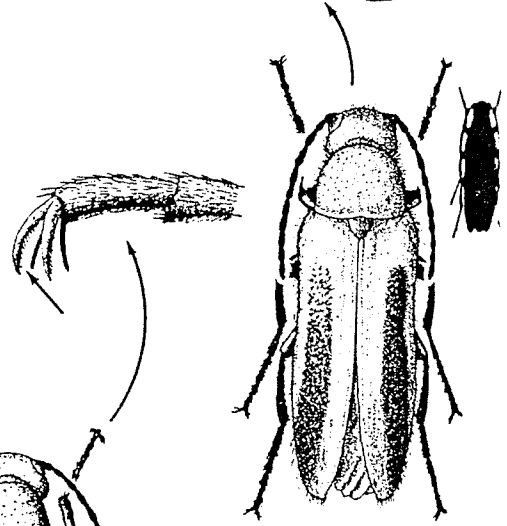
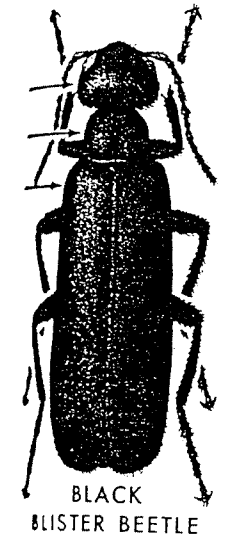
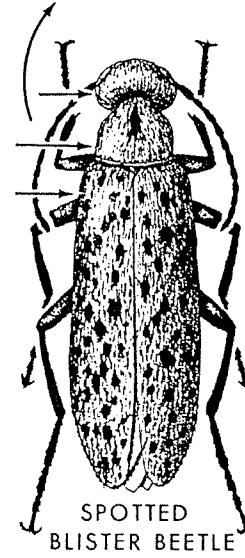
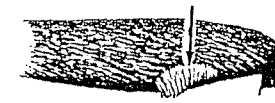
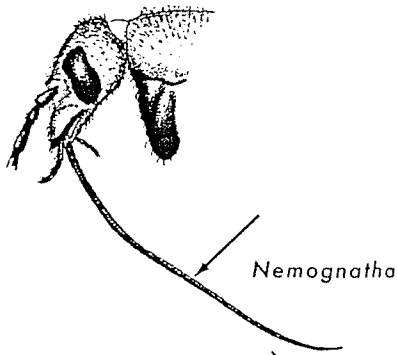


L+20mm.

WHARF BORER

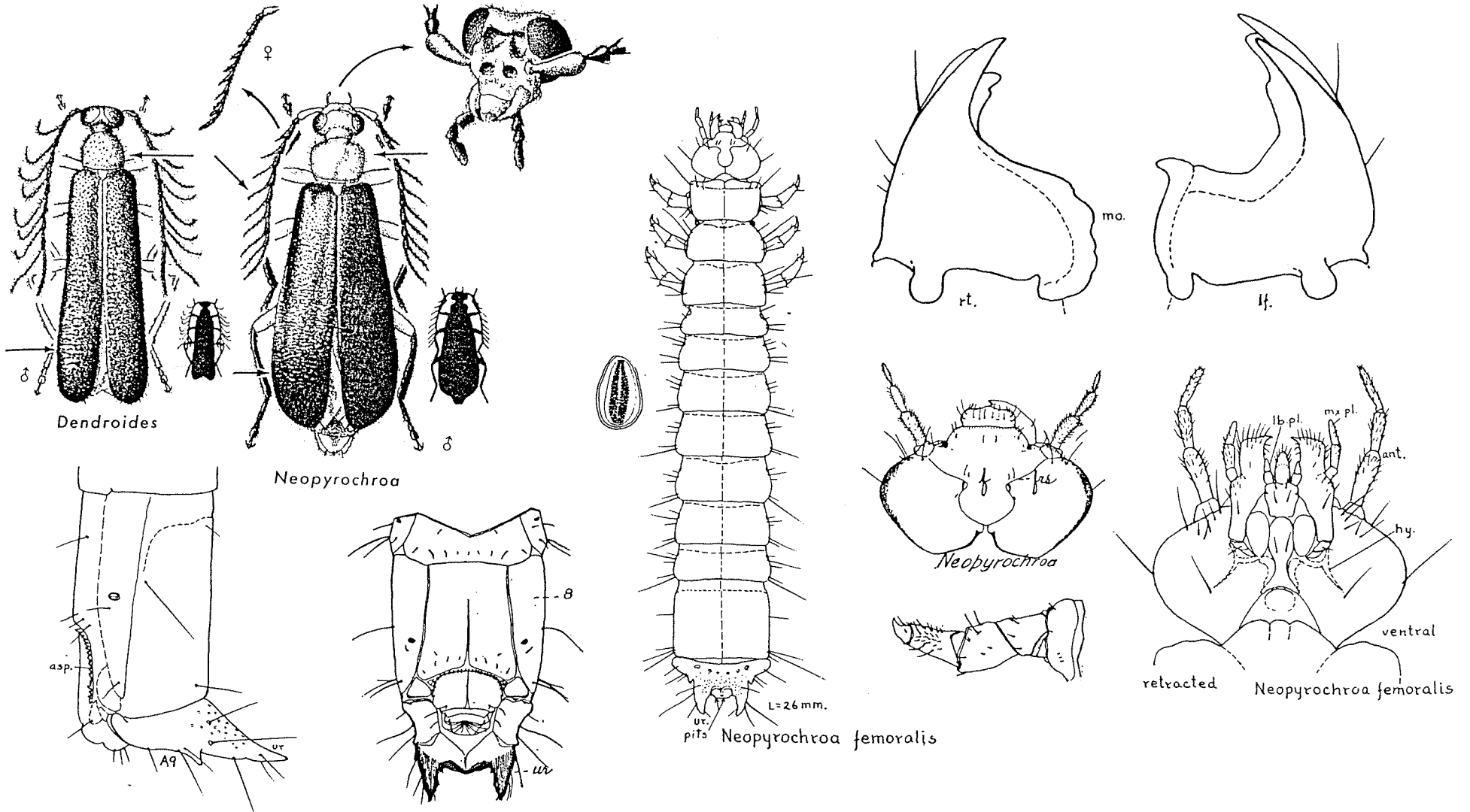
Order Coleoptera
Suborder Polyphaga
Superfamily Tenebrionoidea

Family Meloidae
Blister Beetles



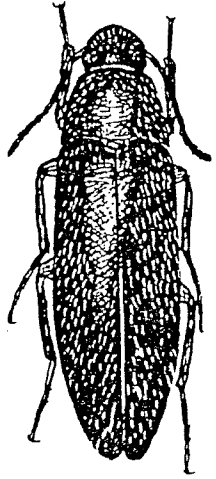
Order Coleoptera
 Suborder Polyphaga
 Superfamily Tenebrionoidea

Family Pyrochroidae
 Fire-colored Beetles

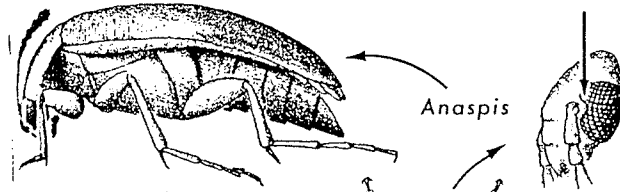


Order Coleoptera
 Suborder Polyphaga
 Superfamily Tenebrionoidea

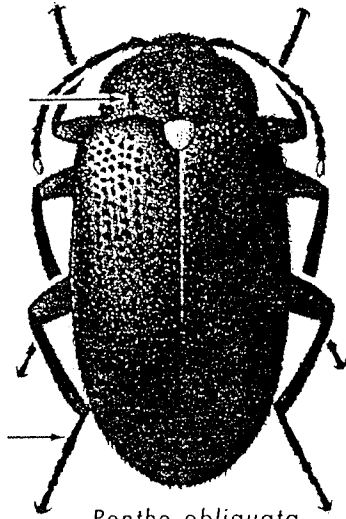
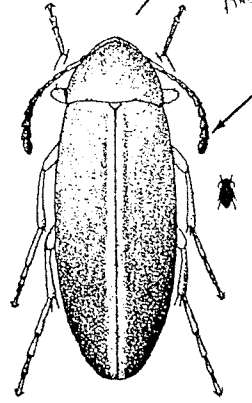
Family Melandryidae
 False Darkling Beetles



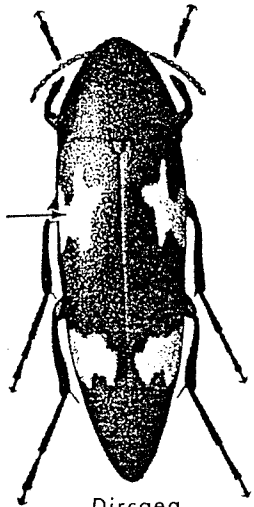
Synchroa punctata



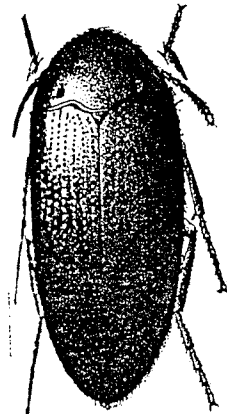
Anaspis



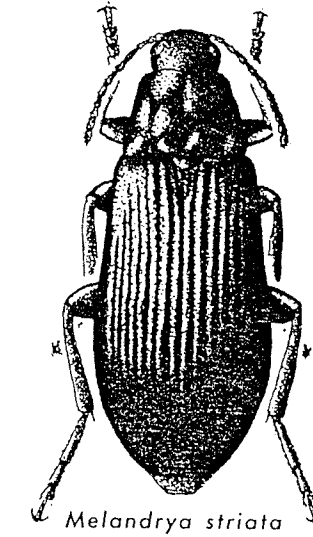
Penthe obliquata



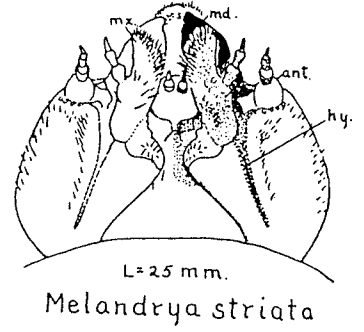
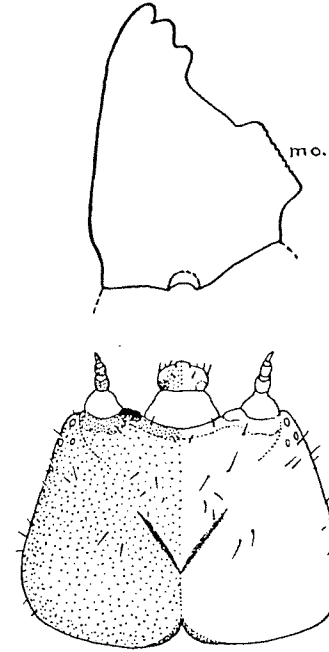
Dircaea



Eustrophinus

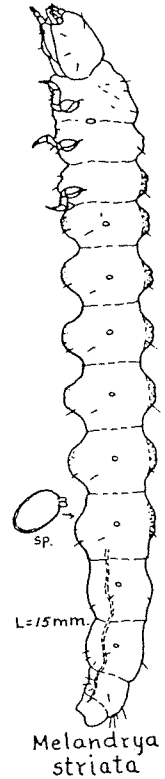


Melandrya striata



L = 25 mm.

Melandrya striata

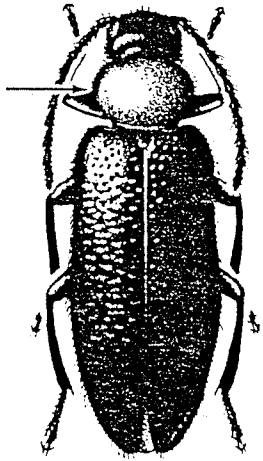


L = 15 mm.

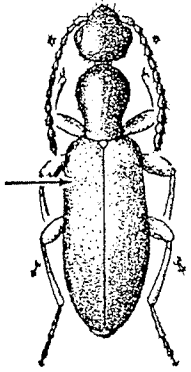
Melandrya striata

Order Coleoptera
 Suborder Polyphaga
 Superfamily Tenebrionoidea

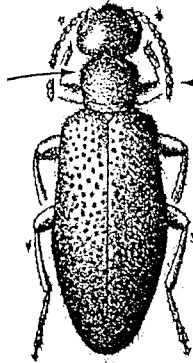
Family Anthicidae
 Antlike flower Beetles



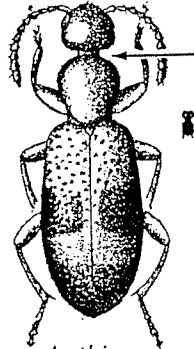
Pedilus



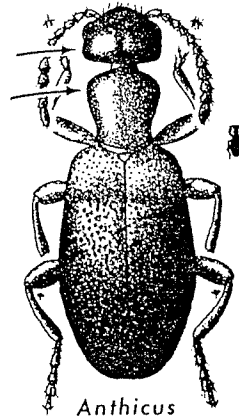
Ischyropalpus



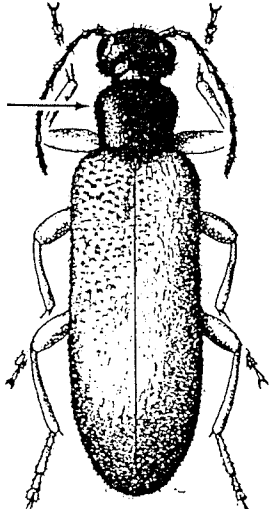
Sapintus



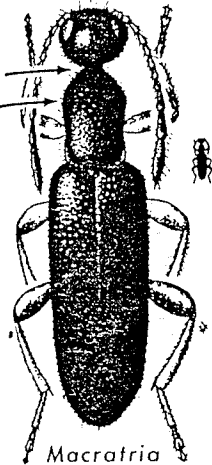
Anthicus



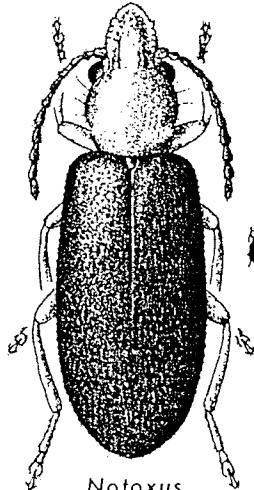
Anthicus



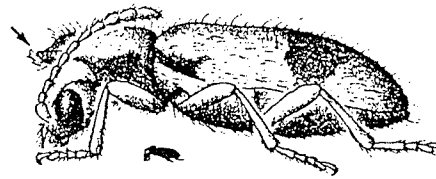
Stereopalpus



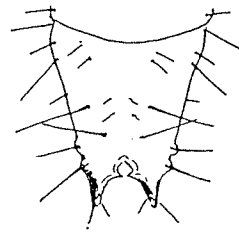
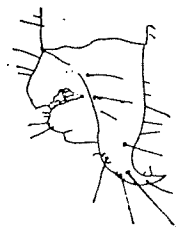
Macratrria



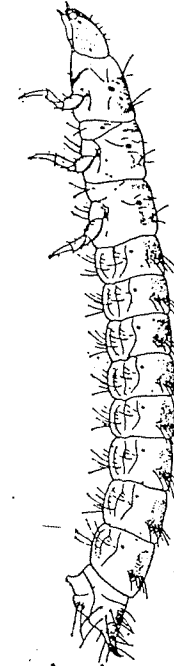
Notoxus murinipennis



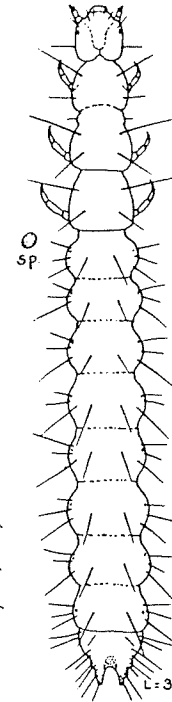
Notoxus monodon



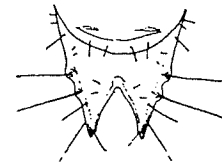
Mecynotarsus



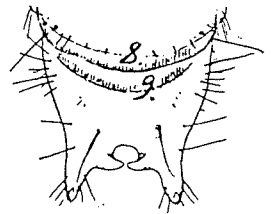
Anthicus



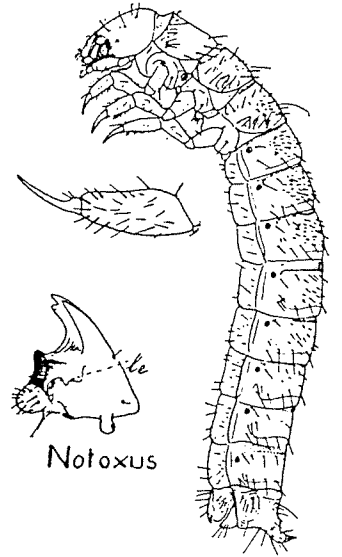
Notoxus sp.



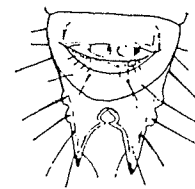
Notoxus



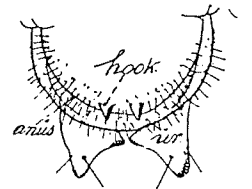
Eurygenius



Notoxus



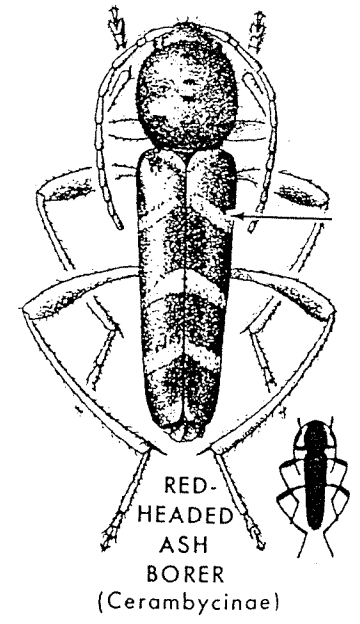
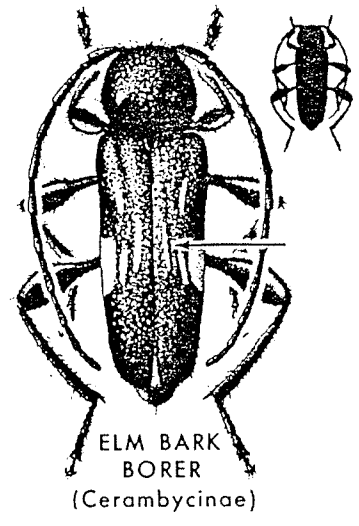
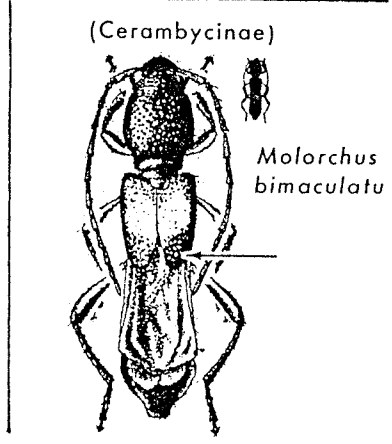
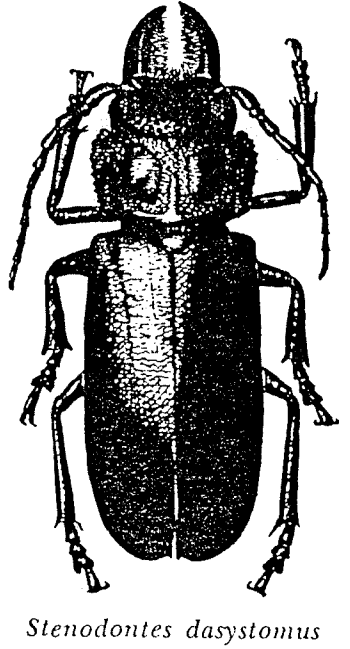
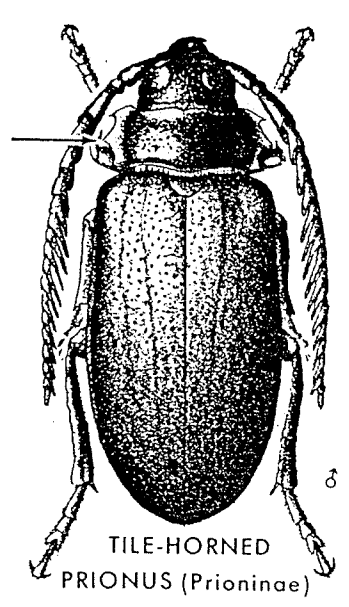
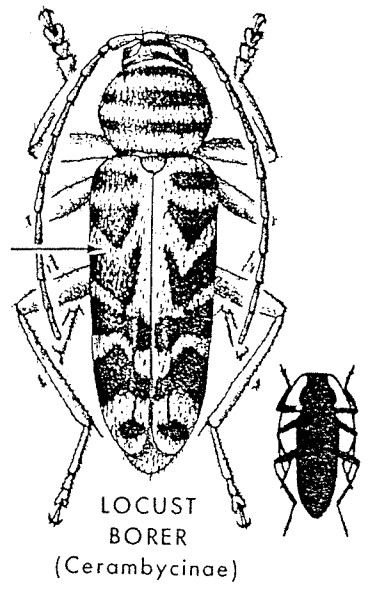
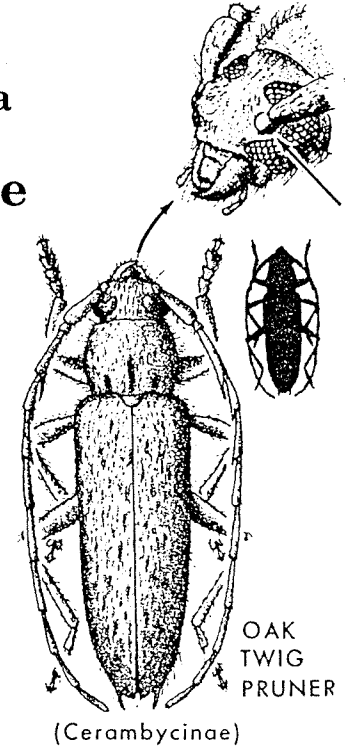
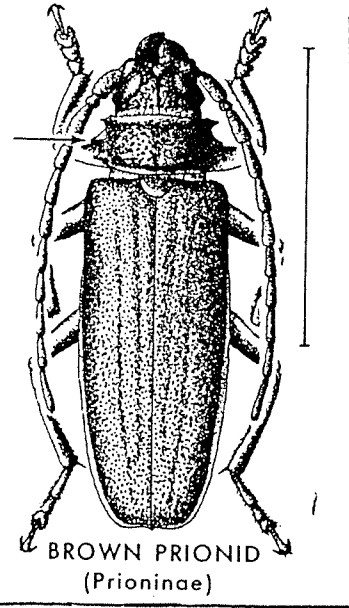
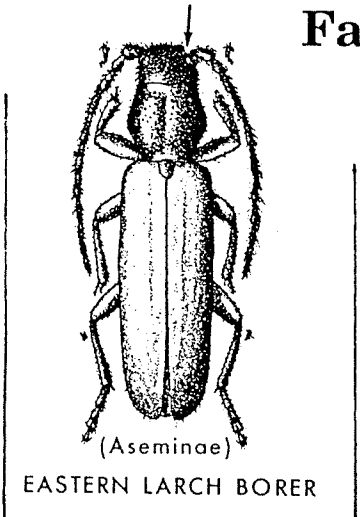
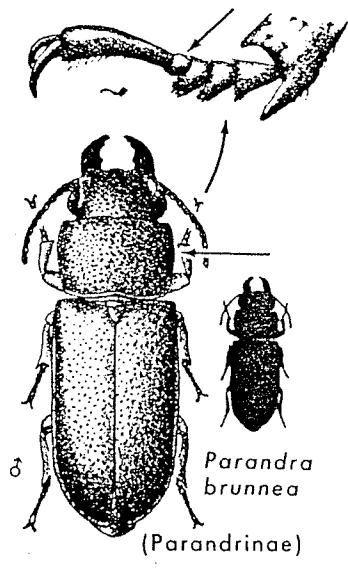
Anthicus



Eurygenius

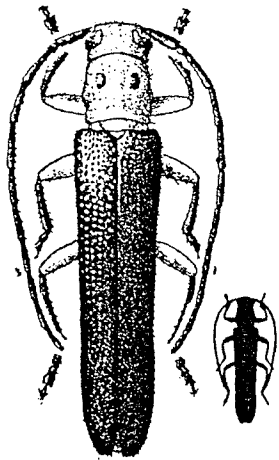
Order Coleoptera
 Suborder Polyphaga
 Superfamily Chrysomeloidea

Family Cerambycidae
 Long-horned Beetles

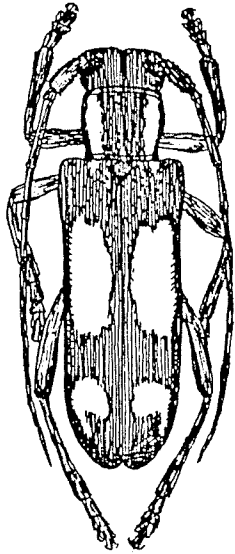


Order Coleoptera
 Suborder Polyphaga
 Superfamily Chrysomeloidea

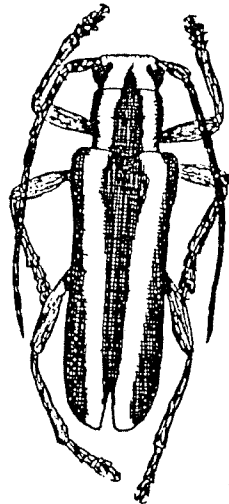
Family Cerambycidae
 Long-horned Beetles



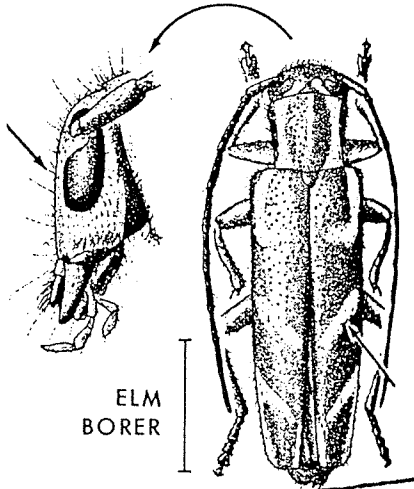
SUMAC STEM BORER



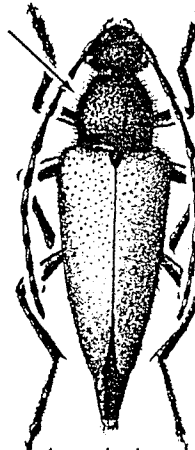
S. cretata



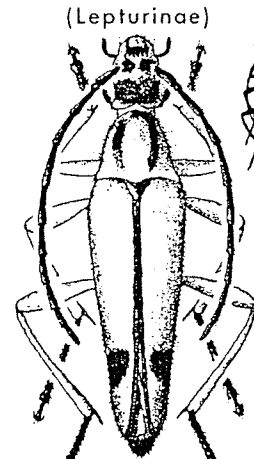
S. candida



ELM BORER

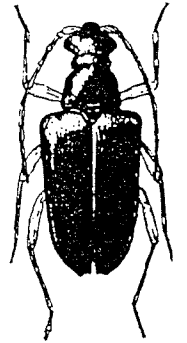


Anoplodera
(Lepturinae)

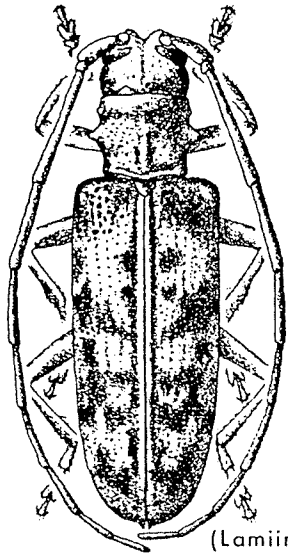


(Lepturinae)

Strangalia

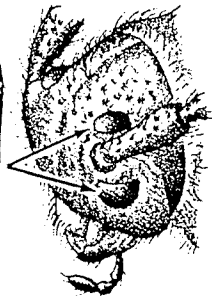
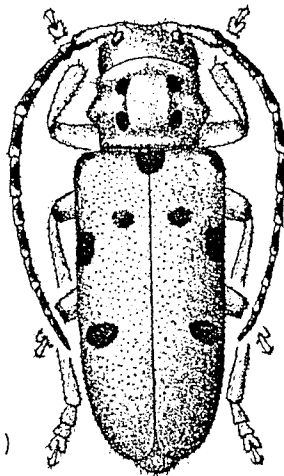


Gaurotus cyanipennis

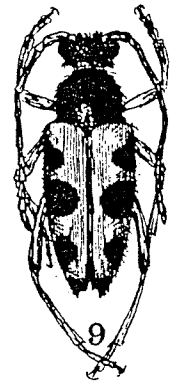


(Lamiinae)

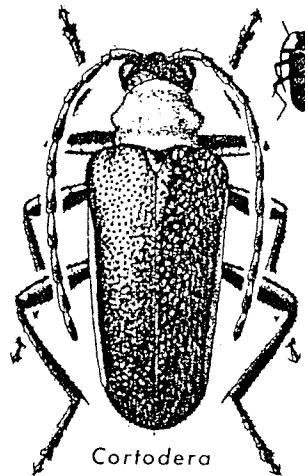
SOUTHERN PINE SAWYER



RED MILKWEED BEETLE



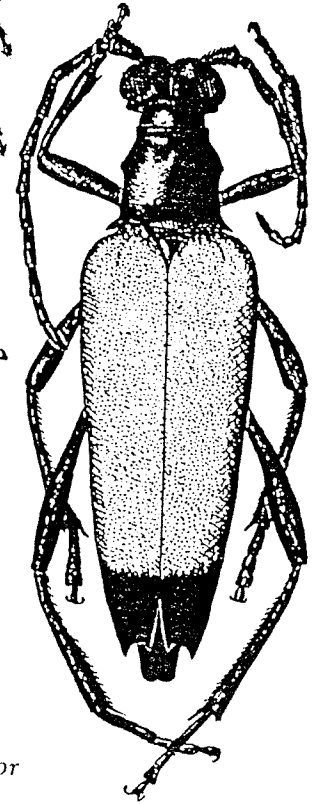
Typocerus sinuatus



Cortodera



Stenocorus inquisitor



Leptura emarginata

9

17