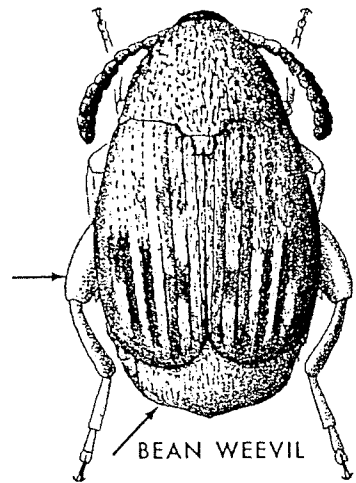


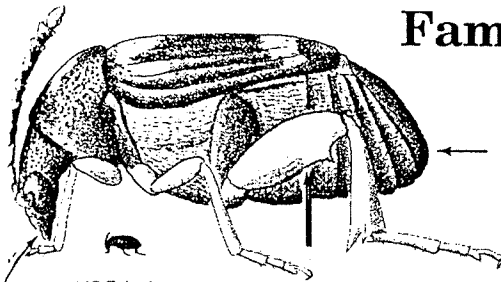
Order Coleoptera
Suborder Polyphaga
Superfamily Chrysomeloidea

Family Bruchidae

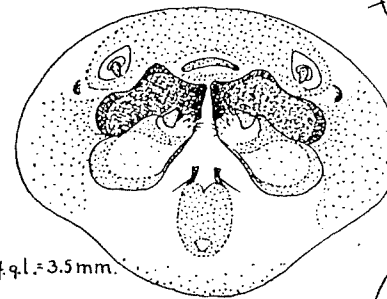
Seed Beetles



BEAN WEEVIL

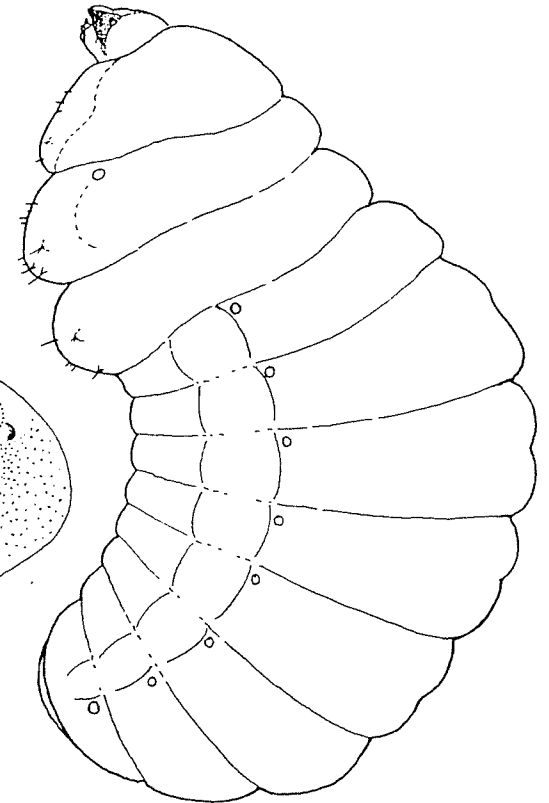


COWPEA WEEVIL



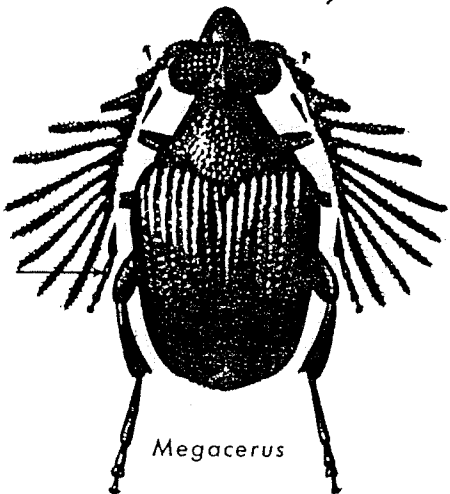
f.g.l. = 3.5 mm.

BEAN WEEVIL

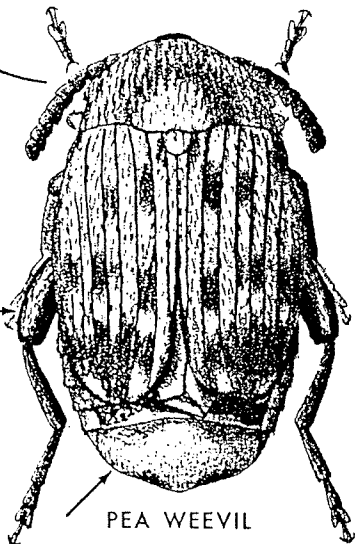


L = 3 mm.

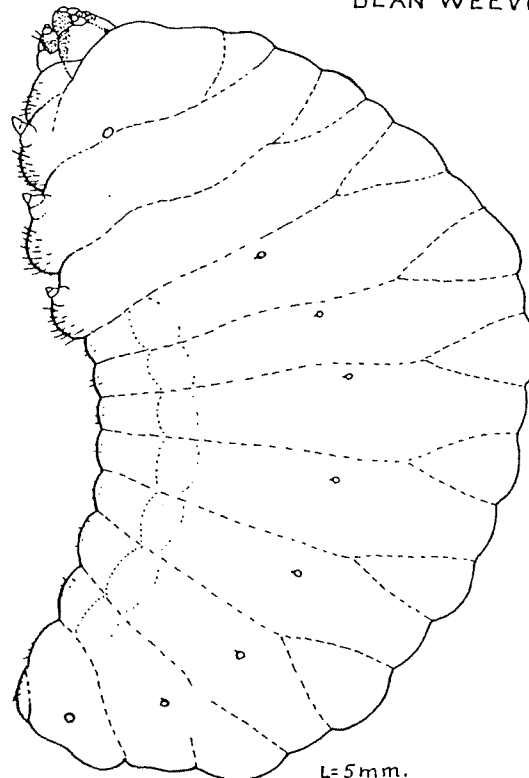
BEAN WEEVIL



Megacerus

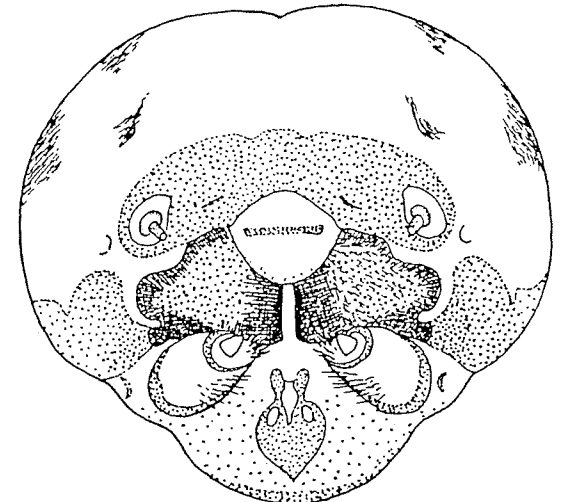


PEA WEEVIL



L = 5 mm.

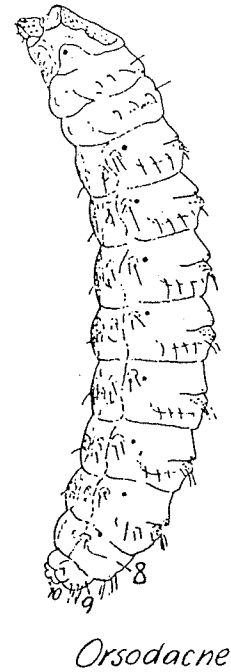
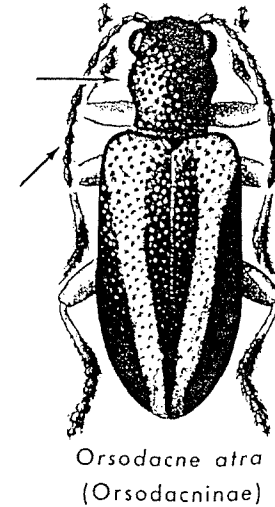
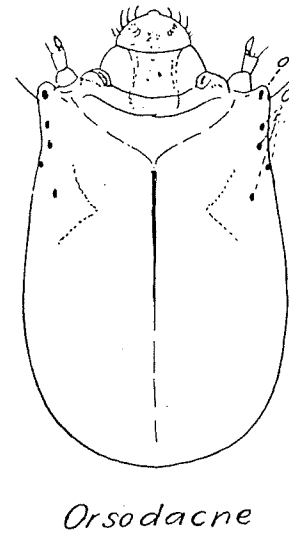
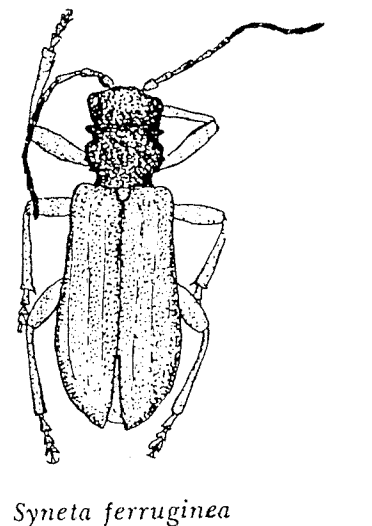
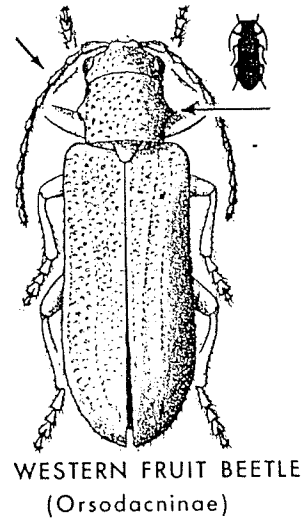
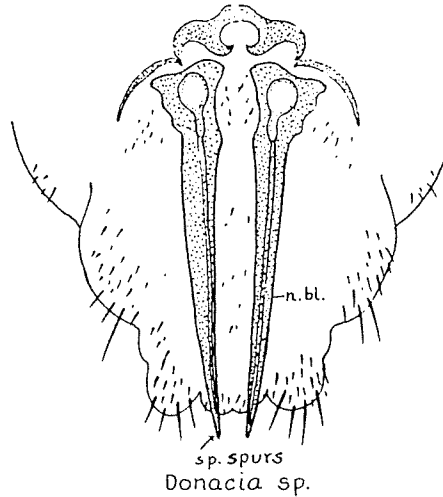
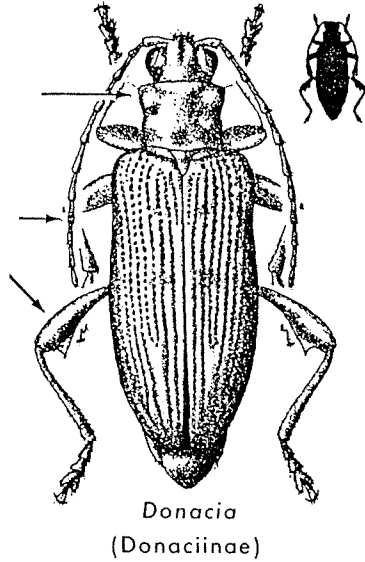
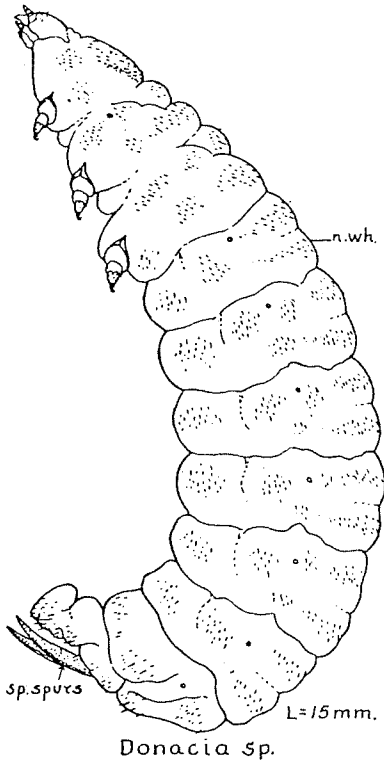
PEA WEEVIL



PEA WEEVIL

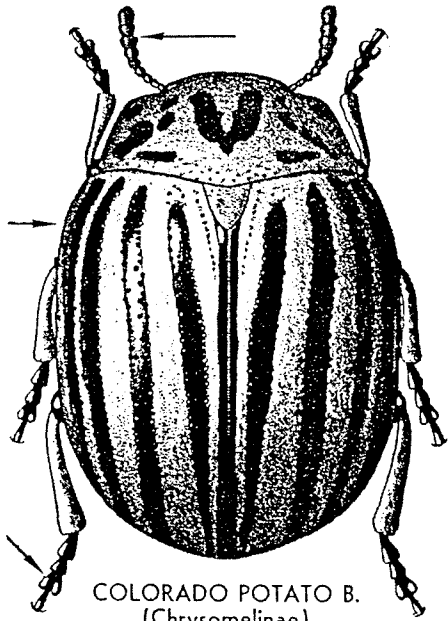
Order Coleoptera
 Suborder Polyphaga
 Superfamily Chrysomeloidea

Family Chrysomelidae
 Leaf Beetles



Order Coleoptera
 Suborder Polyphaga
 Superfamily Chrysomeloidea

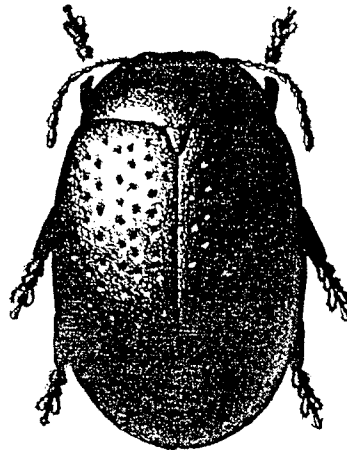
Family Chrysomelidae
 Leaf Beetles



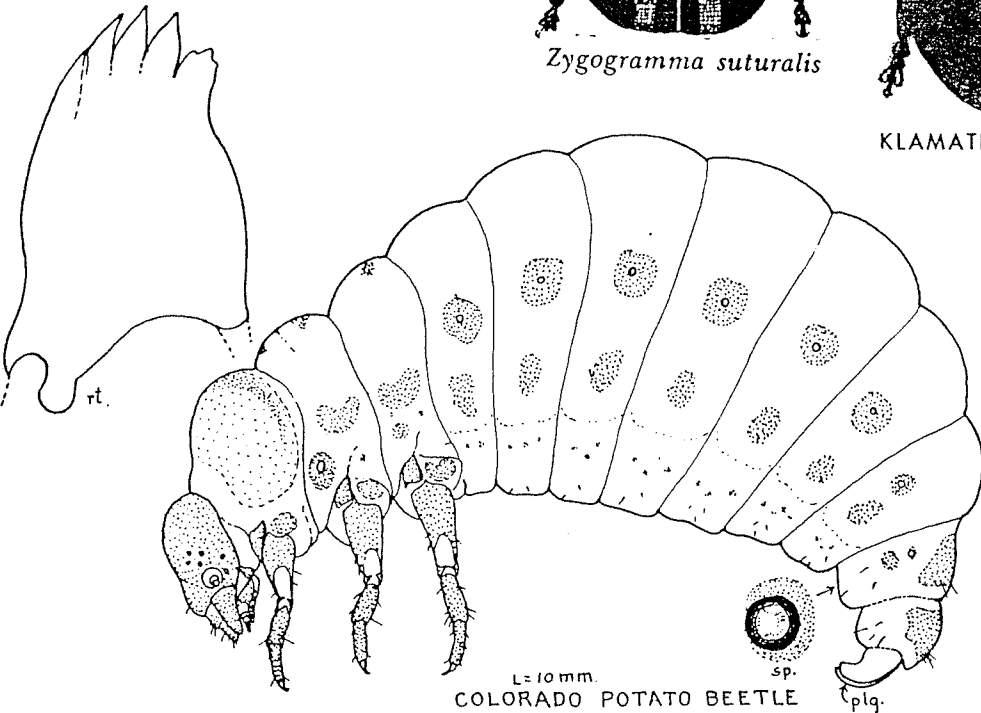
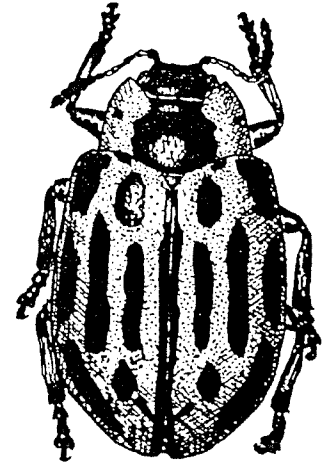
COLORADO POTATO B.
 (Chrysomelinae)



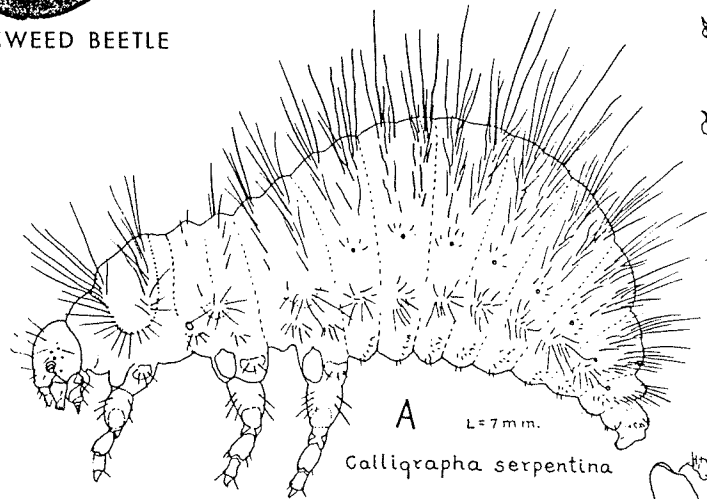
Zygogramma suturalis



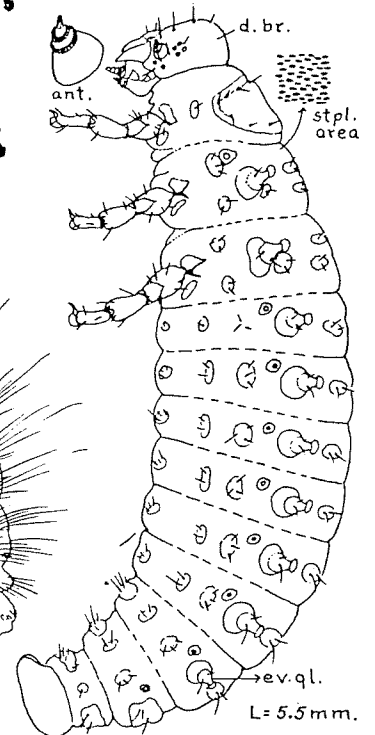
KLAMATHWEED BEETLE



L=10 mm.
 COLORADO POTATO BEETLE



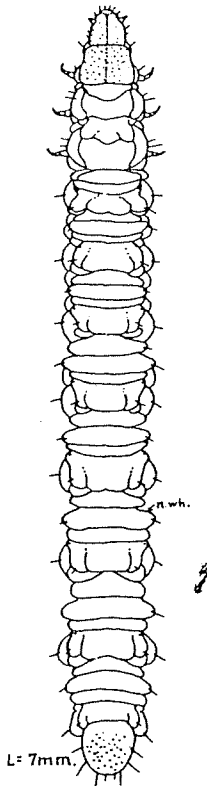
A L=7 mm.
 Calligrapha serpentina



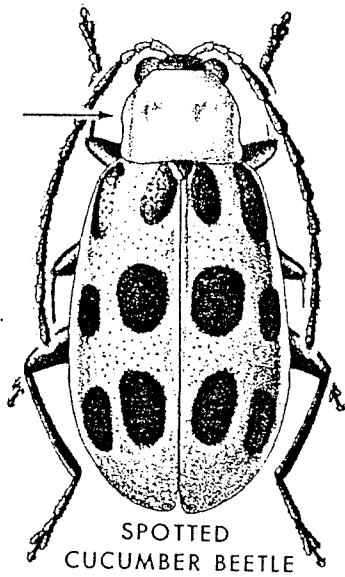
L=5.5 mm.
 IMPORTED WILLOW
 LEAF BEETLE

Order Coleoptera
 Suborder Polyphaga
 Superfamily Chrysomeloidea

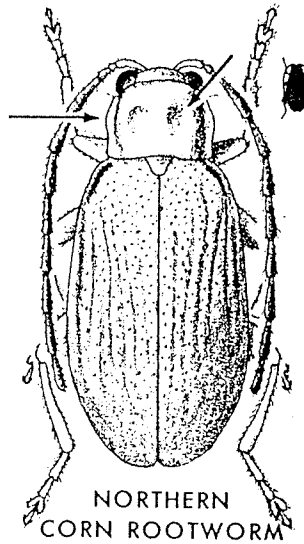
Family Chrysomelidae
 Leaf Beetles



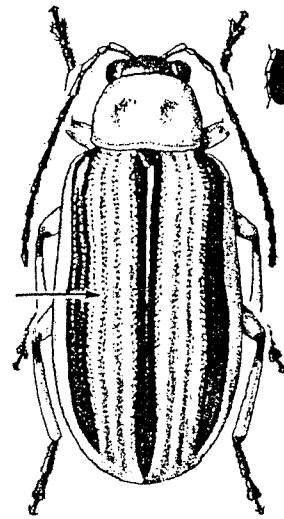
L = 7mm.
 CORN ROOTWORM



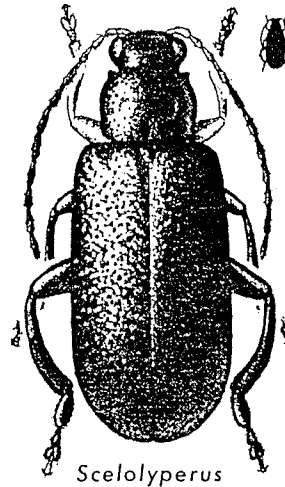
SPOTTED
 CUCUMBER BEETLE



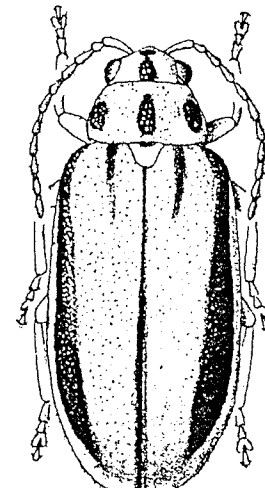
NORTHERN
 CORN ROOTWORM



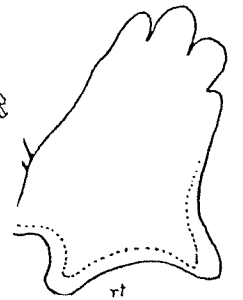
STRIPED
 CUCUMBER BEETLE



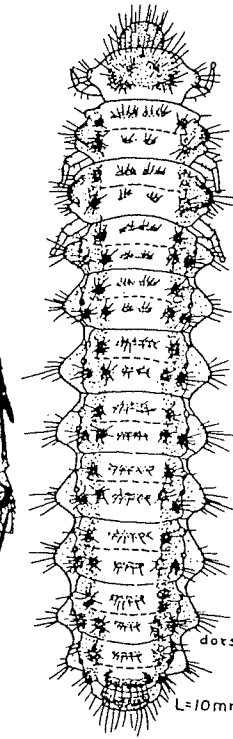
Scelolyperus



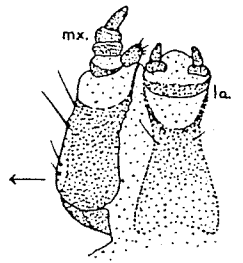
ELM LEAF BEETLE



rt

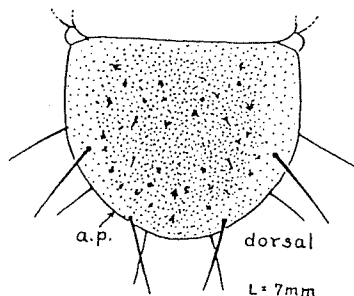


Trirhabda virgata



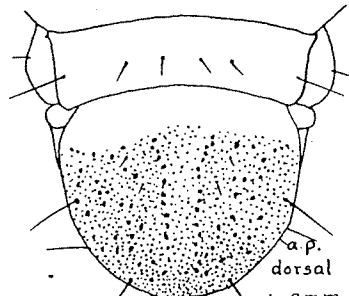
mx.

a.



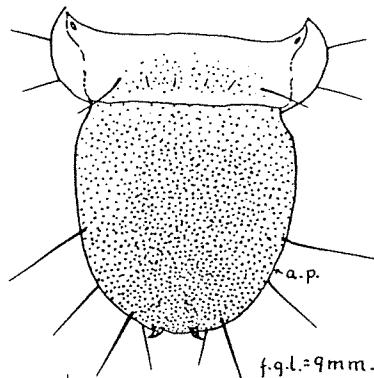
a.p. dorsal
 L = 7mm

CORN ROOTWORM



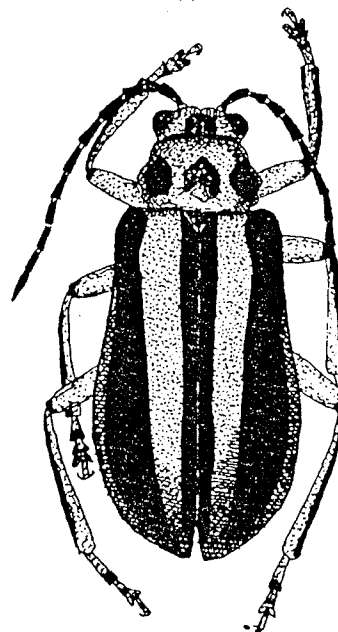
a.p. dorsal
 L = 9mm.

BEAN LEAF BEETLE

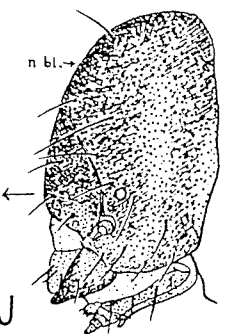


a.p. f.q.l. = 9mm.

STRIPED CUCUMBER BEETLE



Trirhabda virgata



n. bl.

dorsal

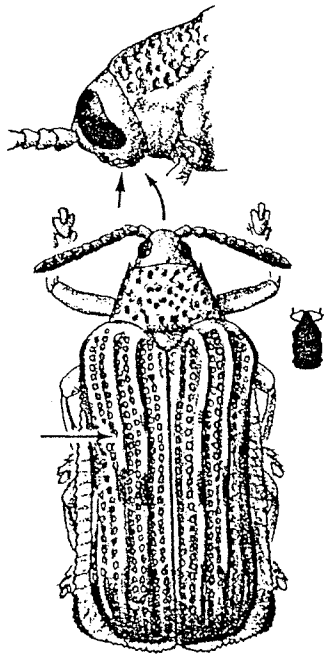
J

ELM LEAF BEETLE

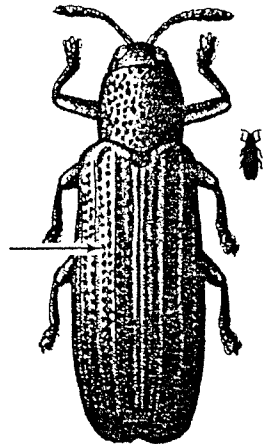
(Galerucinae)

Order Coleoptera
 Suborder Polyphaga
 Superfamily Chrysomeloidea

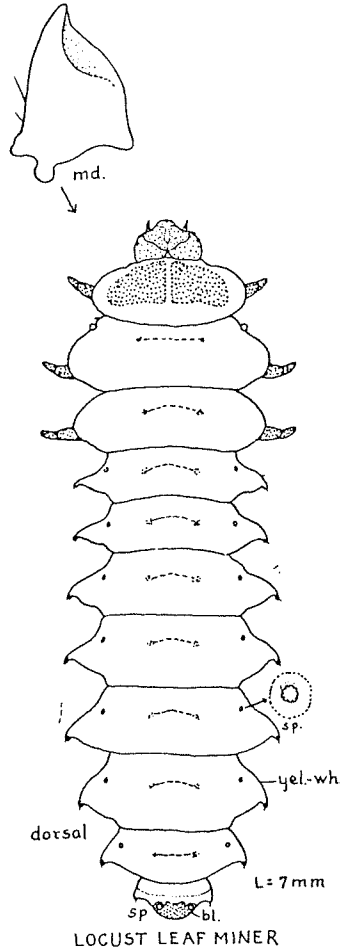
Family Chrysomelidae
 Leaf Beetles



BASSWOOD
 LEAF MINER



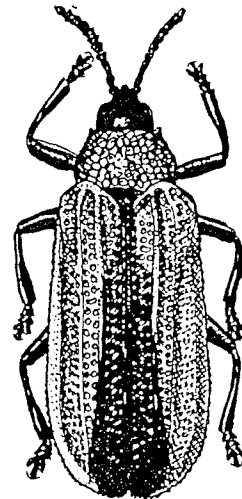
Anisostena



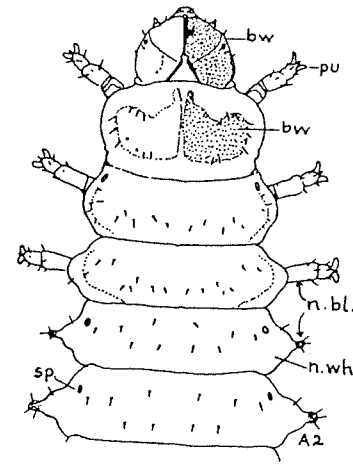
LOCUST LEAF MINER



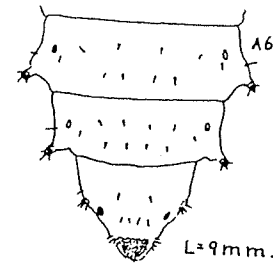
Microrhopala vittata



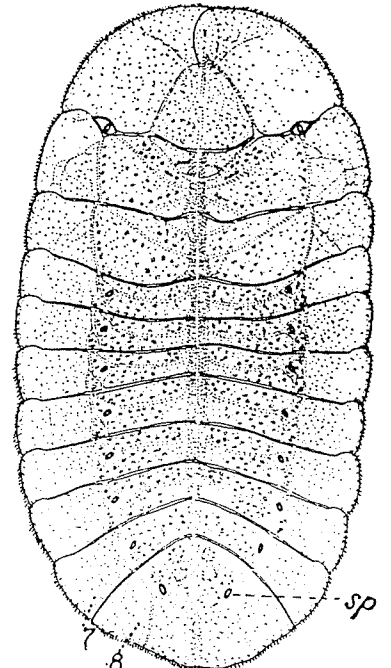
Chalepus dorsalis



GOLDEN ROD LEAF MINER

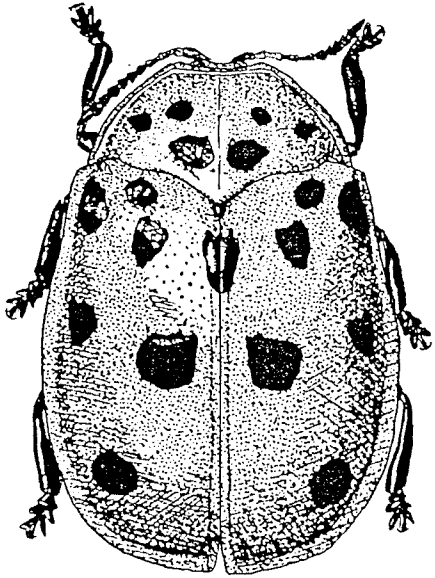


Arescus

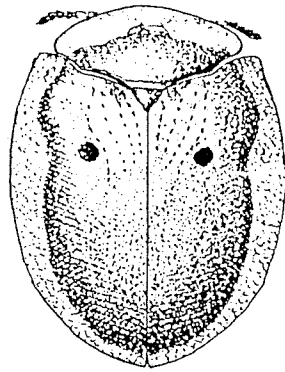


Order Coleoptera
 Suborder Polyphaga
 Superfamily Chrysomeloidea

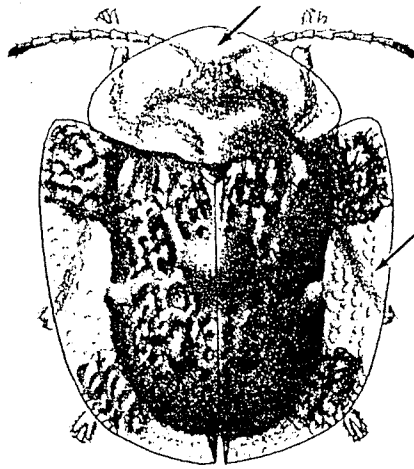
Family Chrysomelidae
 Leaf Beetles



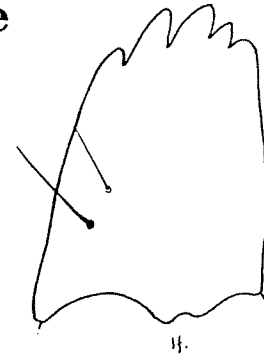
Chelymophra cassidea



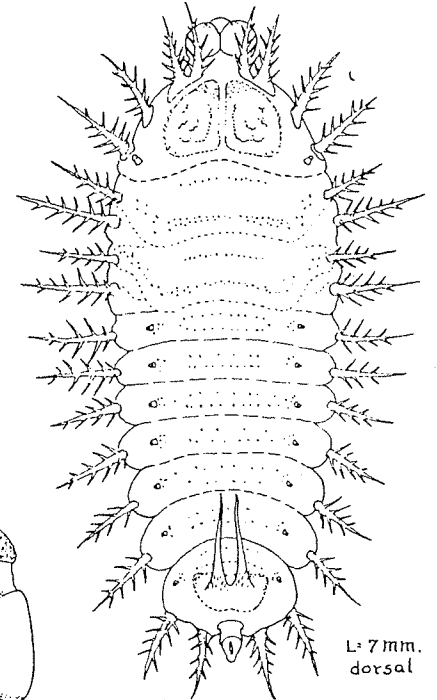
Metriona bicolor



Plagiometriona clavata

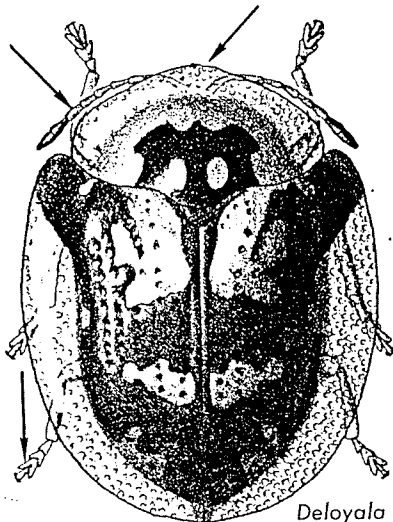
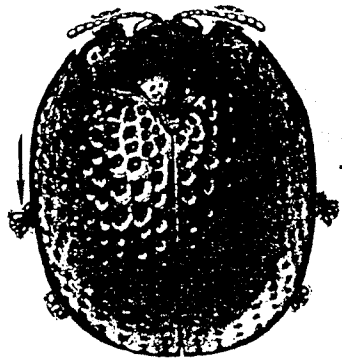


H.



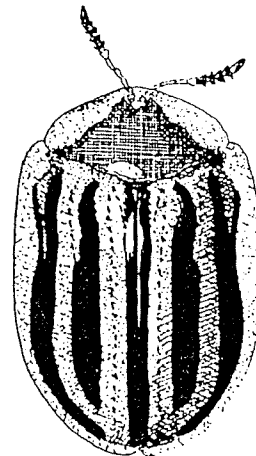
L= 7 mm.
dorsal

Cassida rubiginosa

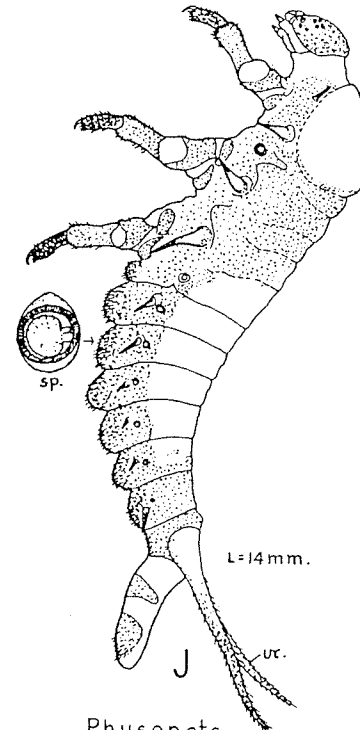


Deloyala

TORTOISE BEETLE



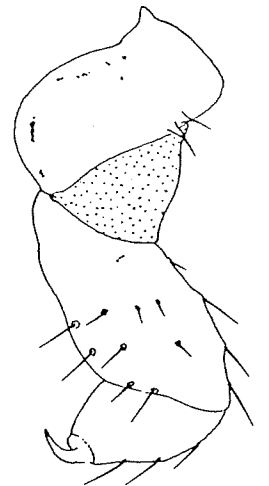
Plagiometriona clavata



L=14 mm.

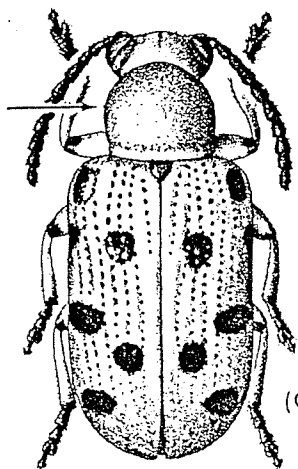
ur.

Physonota helianthi



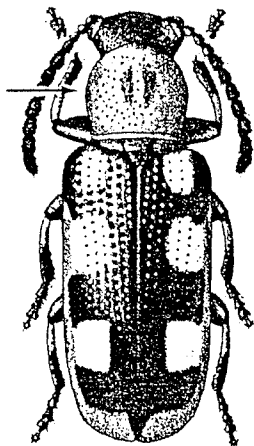
Order Coleoptera
 Suborder Polyphaga
 Superfamily Chrysomeloidea

Family Chrysomelidae
 Leaf Beetles

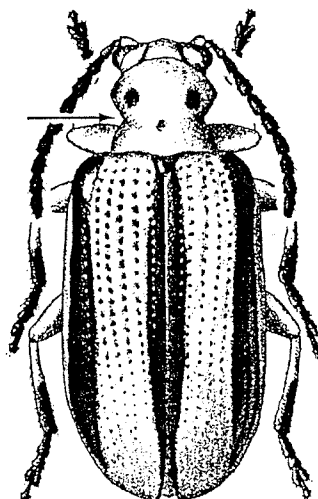


(Criocerinae)

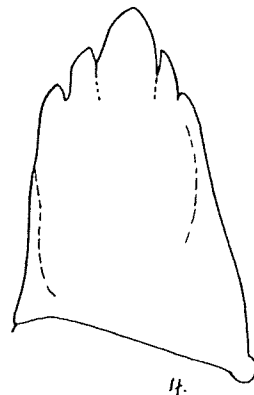
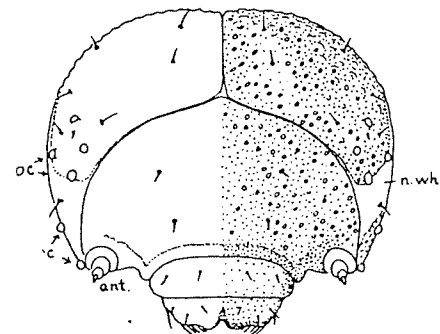
SPOTTED ASPARAGUS BEETLE



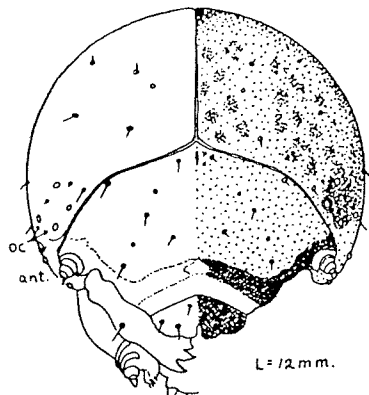
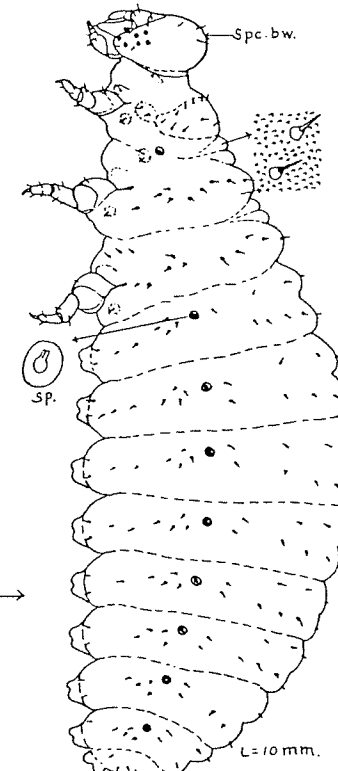
ASPARAGUS BEETLE
 (Criocerinae)



THREELINED POTATO BEETLE
 (Criocerinae)

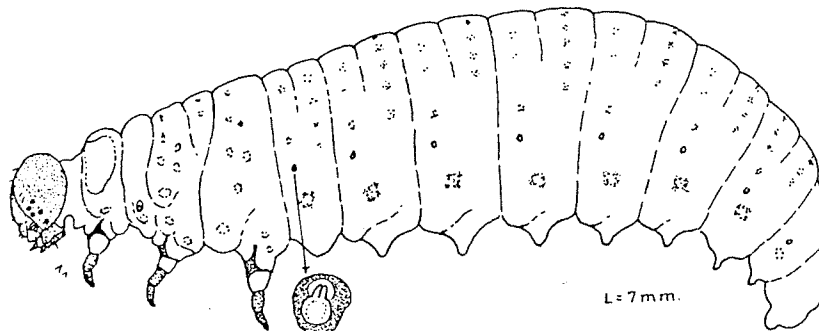


lf.



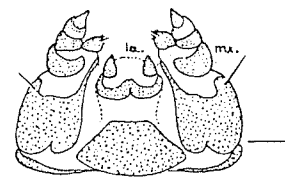
L = 12 mm.

SPOTTED
 ASPARAGUS BEETLE



L = 7 mm.

ASPARAGUS BEETLE

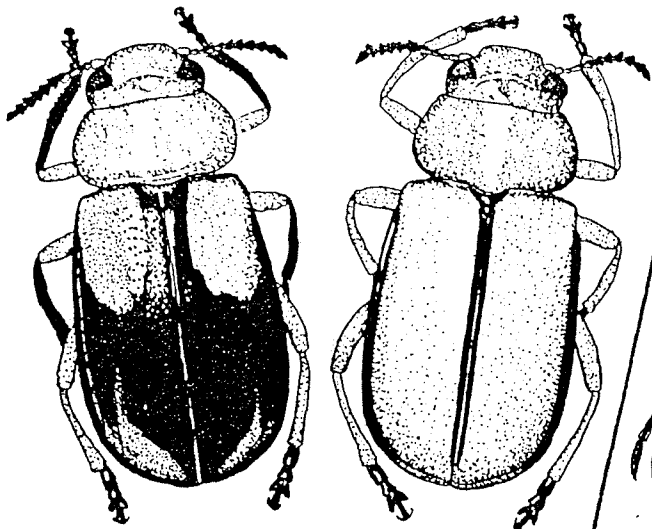


THREE-LINED POTATO BEETLE

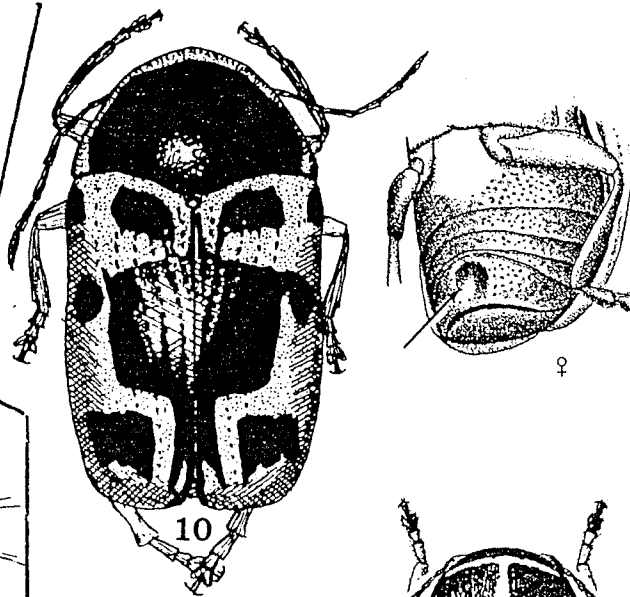
L = 10 mm.

Order Coleoptera
 Suborder Polyphaga
 Superfamily Chrysomeloidea

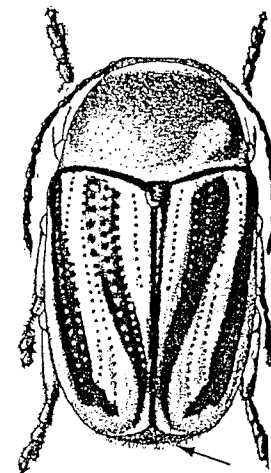
Family Chrysomelidae
 Leaf Beetles



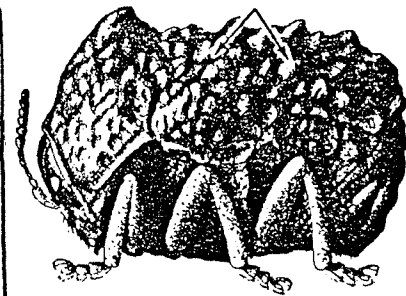
Anomoea laticlavata



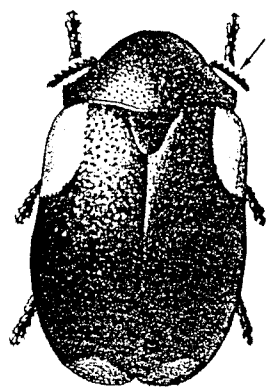
10



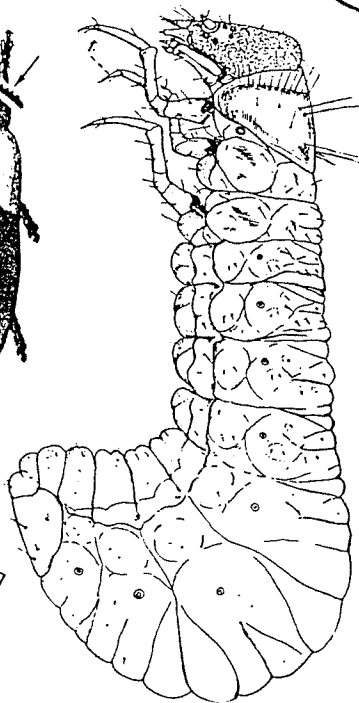
Cryptocephalus
 (Cryptocephalinae)



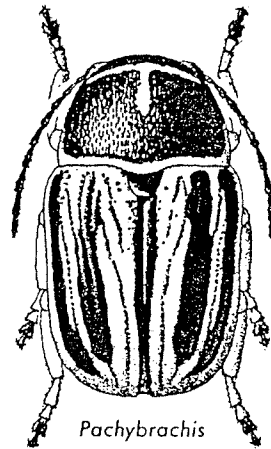
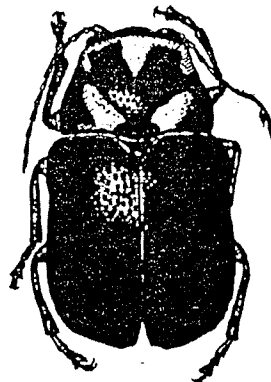
Neochlamisus
 (Chlamisinae)



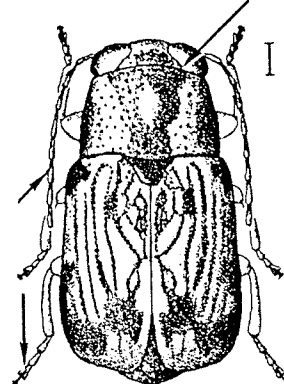
Saxinis
 (Clytrinae)



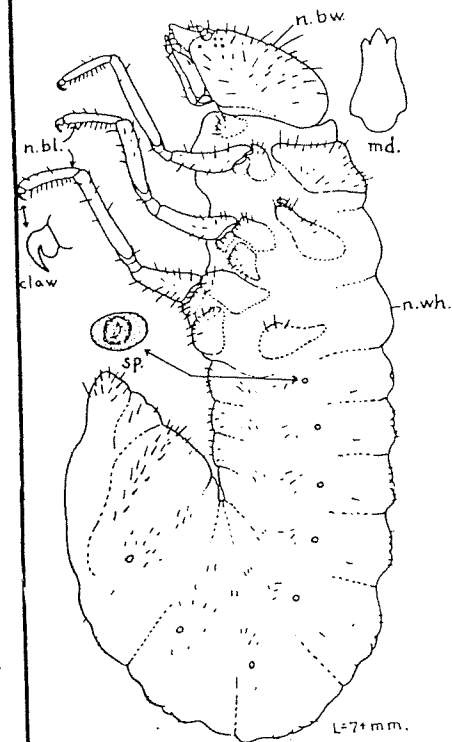
Clytra



Pachybrachis



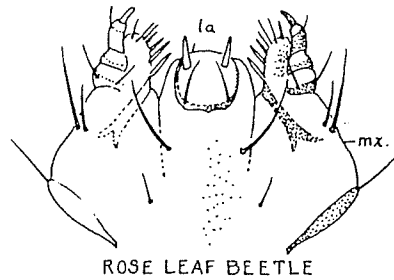
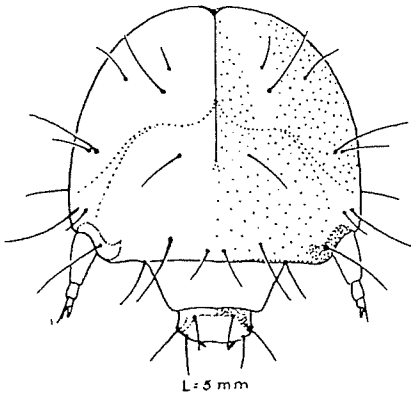
Pachybrachys



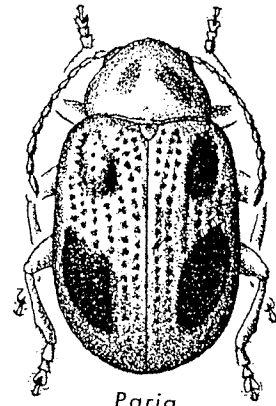
Chlamys sp.

Order Coleoptera
 Suborder Polyphaga
 Superfamily Chrysomeloidea

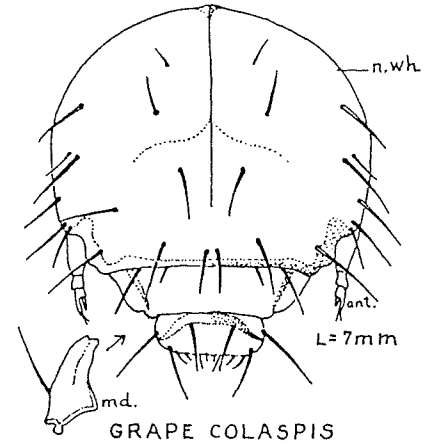
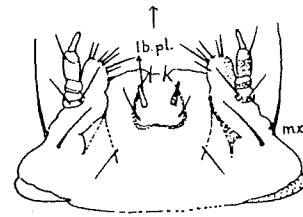
Family Chrysomelidae
 Leaf Beetles



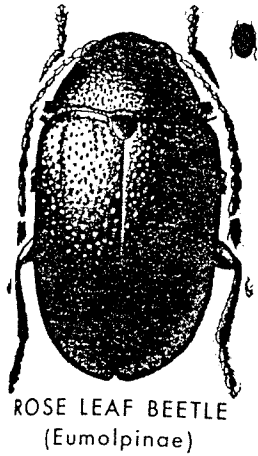
ROSE LEAF BEETLE



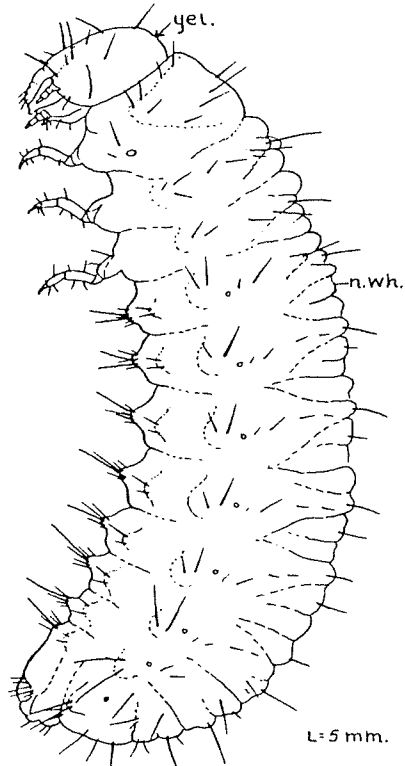
Paria
 (Eumolpinae)



GRAPE COLASPIS

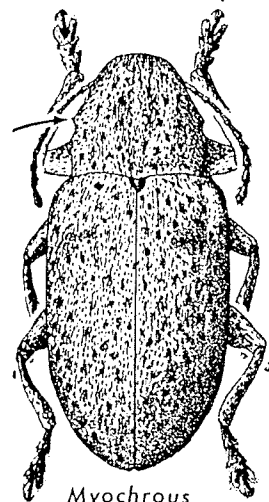


ROSE LEAF BEETLE
 (Eumolpinae)

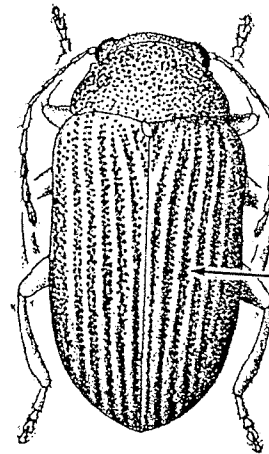


ROSE LEAF BEETLE

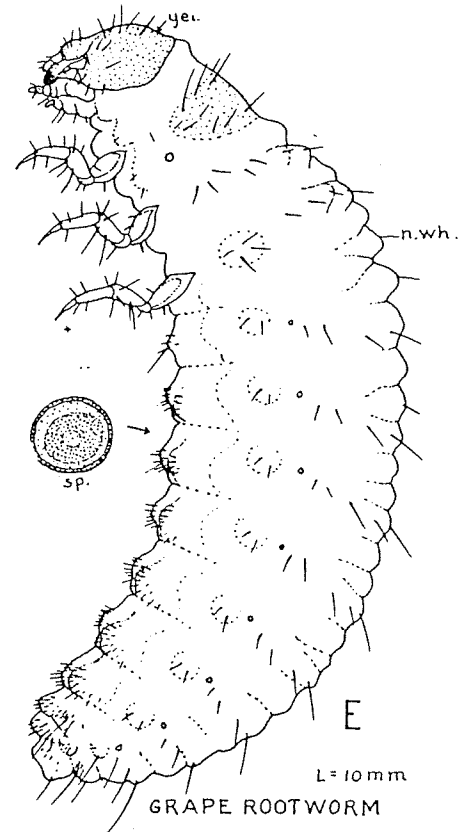
L=5 mm.



Myochrous
 (Eumolpinae)



GRAPE COLASPIS
 (Eumolpinae)

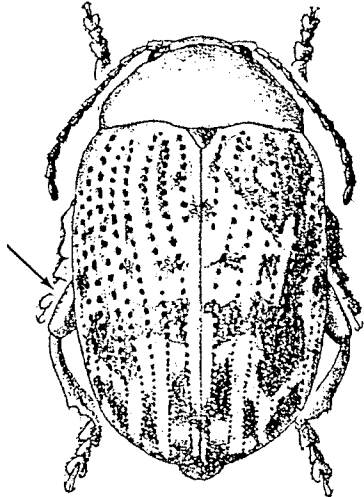


GRAPE ROOTWORM

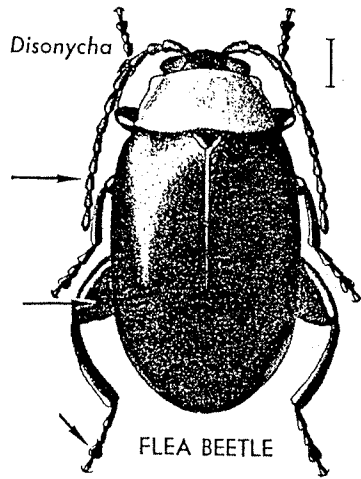
L=10 mm

Order Coleoptera
 Suborder Polyphaga
 Superfamily Chrysomeloidea

Family Chrysomelidae
 Leaf Beetles

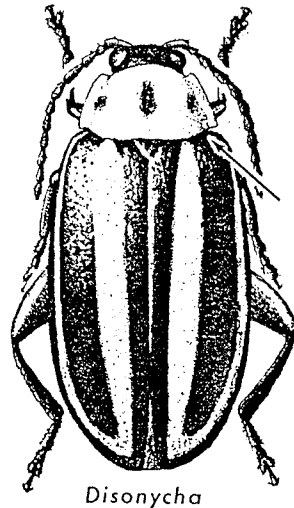


Blepharida rhois
 (Alticinae)

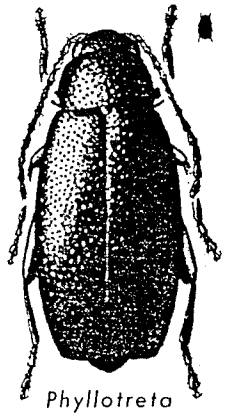


Disonycha

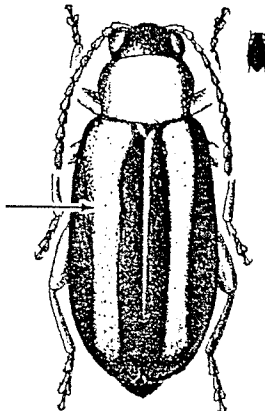
FLEA BEETLE



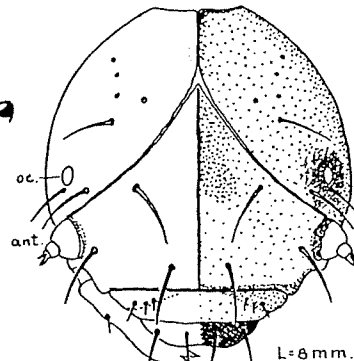
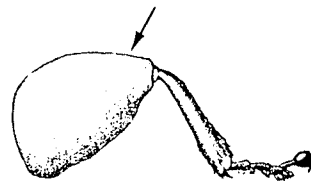
Disonycha



Phyllotreta

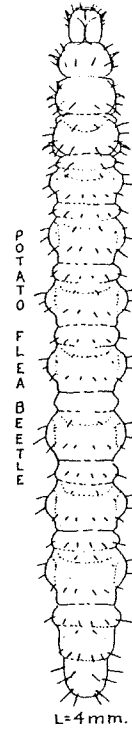


PALE-STRIPED FLEA BEETLE

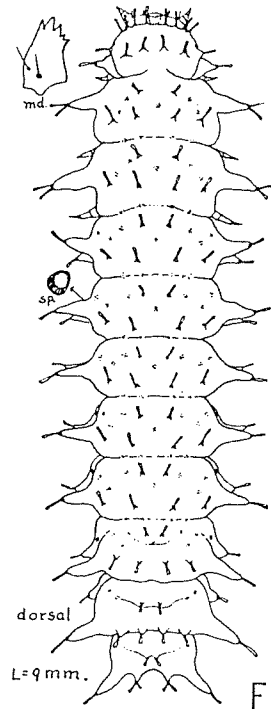


SPINACH FLEA BEETLE

L=6 mm.

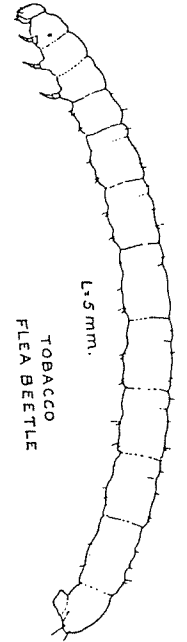


L=4 mm.



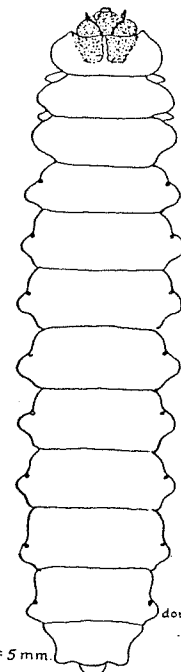
L=9 mm.

Oedionychis sp



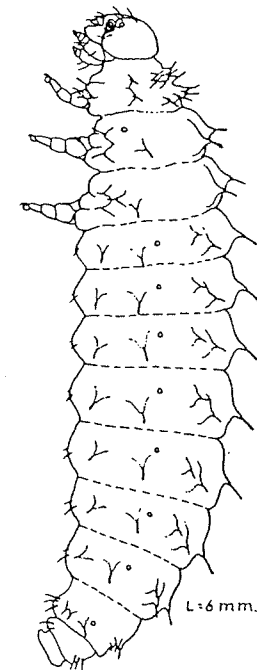
L=5 mm.

TOBACCO
 FLEA BEETLE

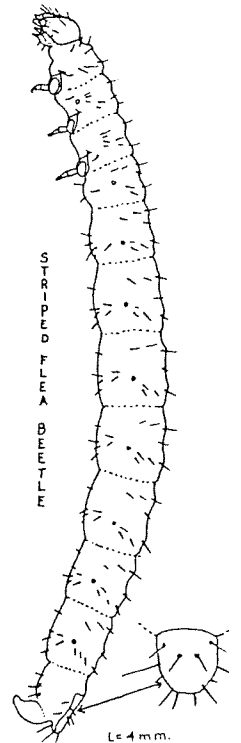


L=5 mm.

Dibolia borealis



SPINACH FLEA BEETLE

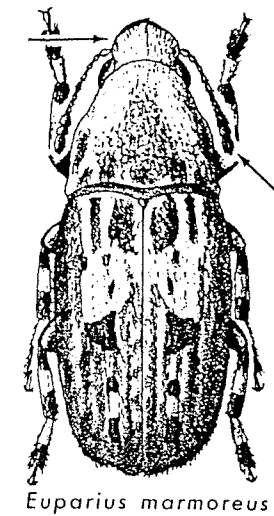
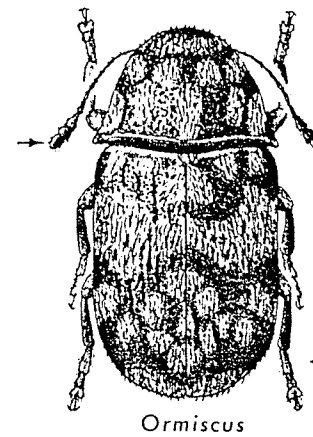
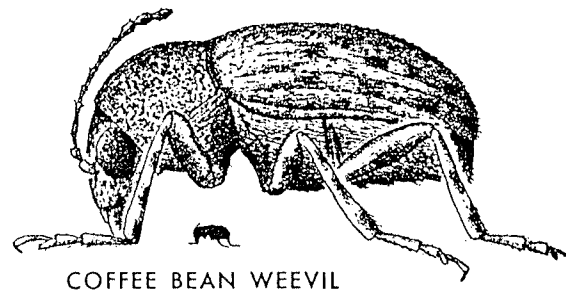
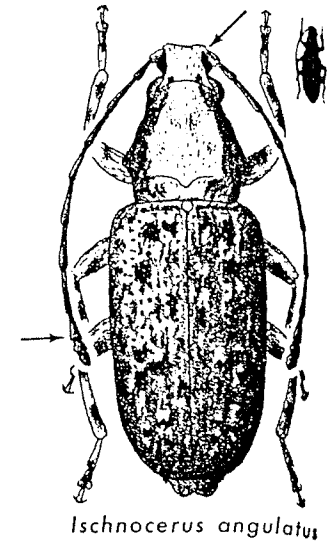
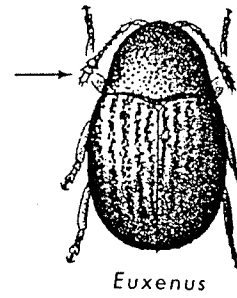
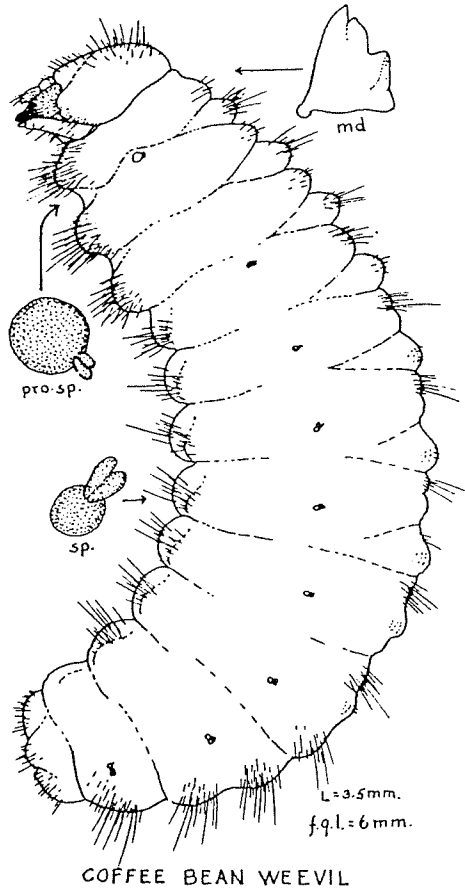


L=4 mm.

STRIPED
 FLEA BEETLE

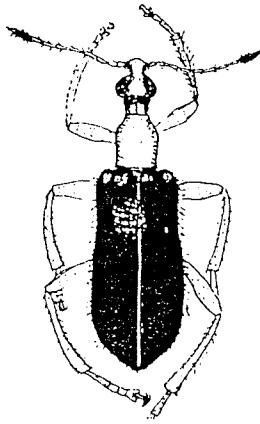
Order Coleoptera
Suborder Polyphaga
Superfamily Curculionoidea

Family Anthribidae
Fungus Weevils

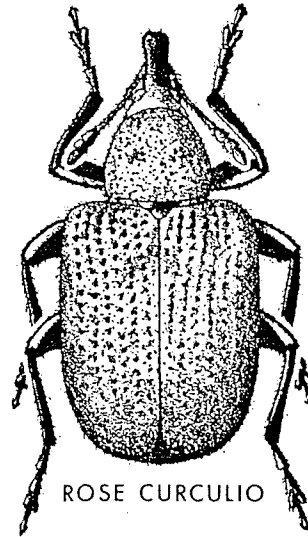
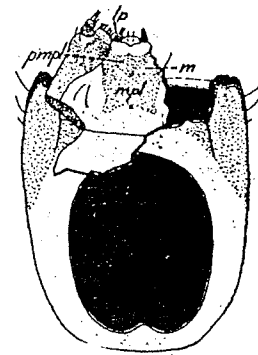
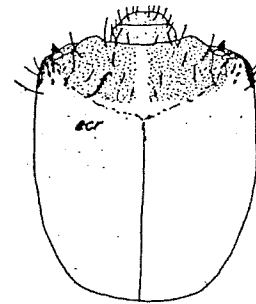
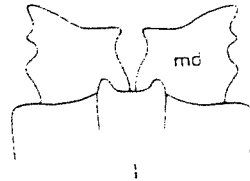
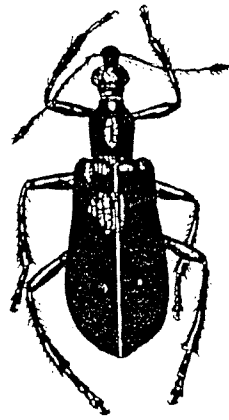


Order Coleoptera
Suborder Polyphaga
Superfamily Curculionoidea

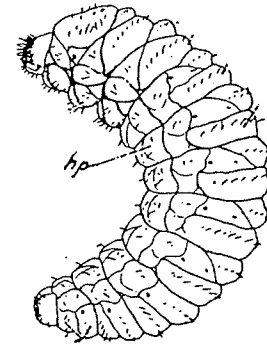
Family Rhynchitidae
Leaf and Bud Weevils



Eugnamptus collaris

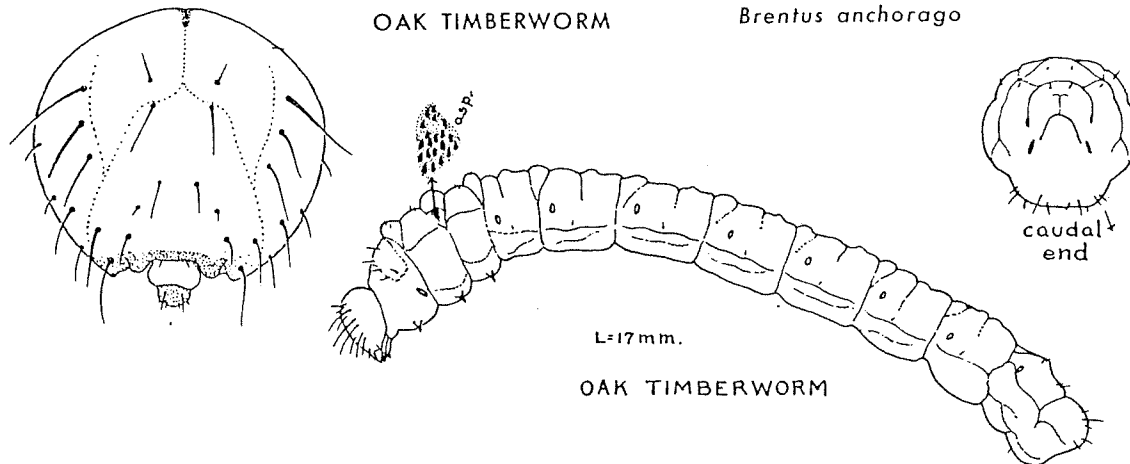
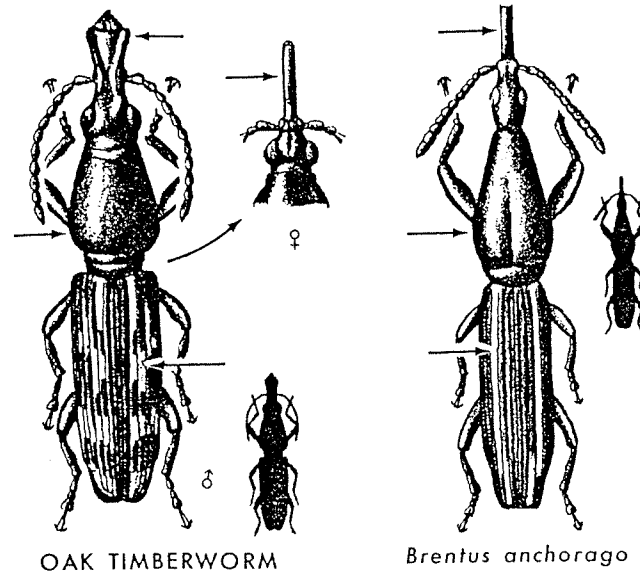


ROSE CURCULIO



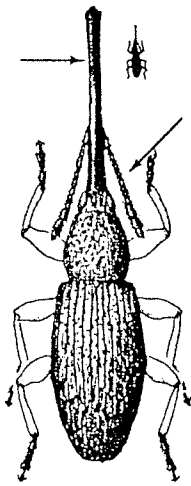
Order Coleoptera
Suborder Polyphaga
Superfamily Curculionoidea

Family Brentidae
Primitive Weevils

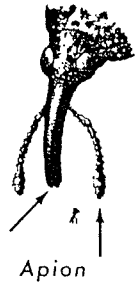
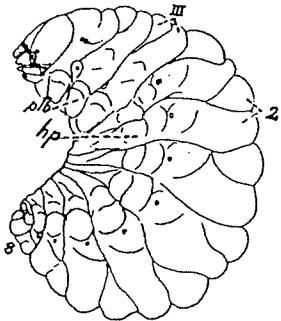


Order Coleoptera
 Suborder Polyphaga
 Superfamily Curculionoidea

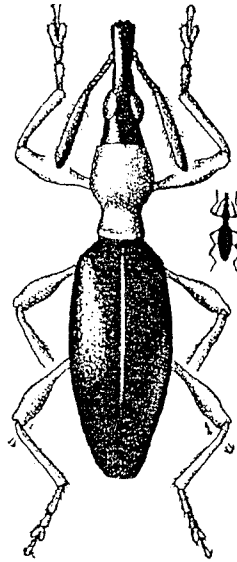
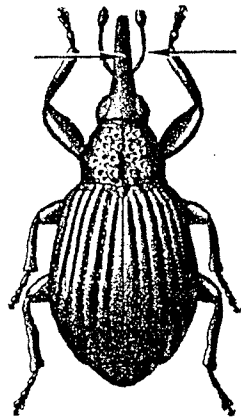
Family Apionidae
 Pear-shaped Weevils



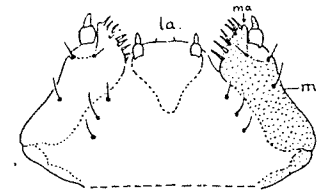
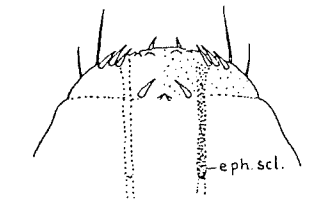
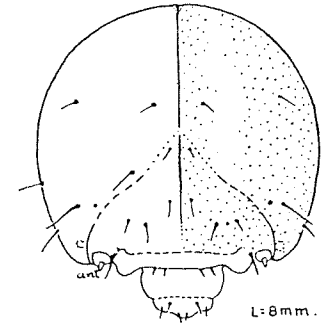
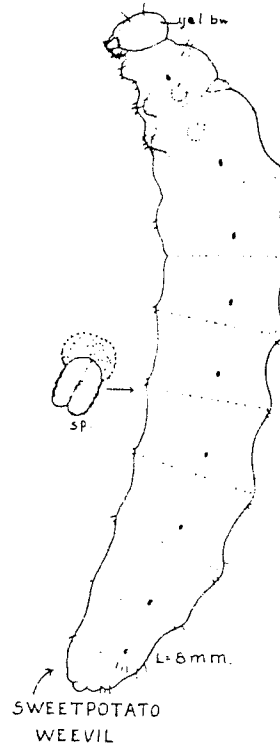
HOLLYHOCK WEEVIL
 (Apioninae)



Apion



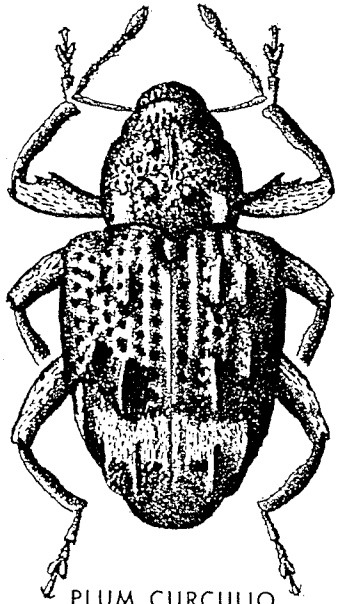
SWEET-POTATO WEEVIL



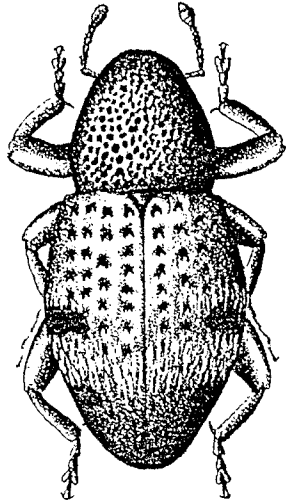
SWEETPOTATO WEEVIL

Order Coleoptera
Suborder Polyphaga
Superfamily Curculionoidea

Family Curculionidae
Weevils



PLUM CURCULIO
(Cryptorhynchinae)



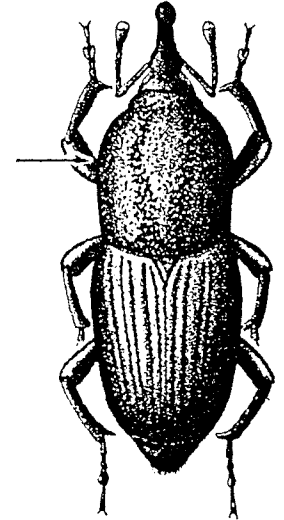
STRAWBERRY CROWN
BORER (Cryptorhynchinae)



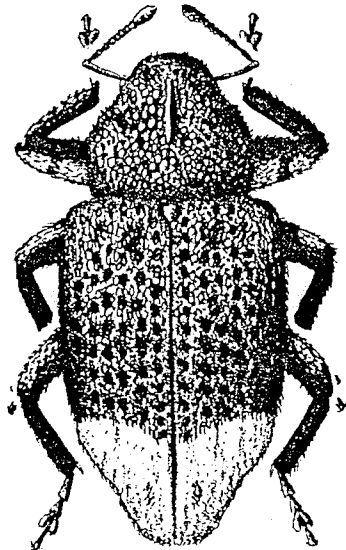
Lixus concavus



RED ELM BARK WEEVIL
(Magdalinae)



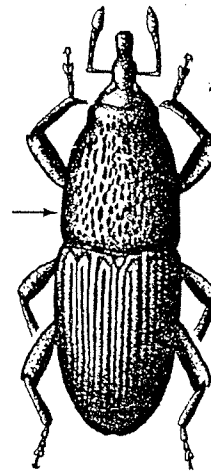
MAIZE BILLBUG
(Rhynchophorinae)



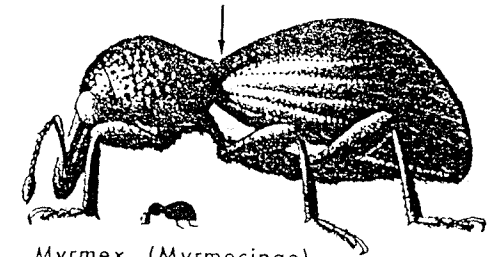
POPLAR-AND-WILLOW
BORER (Cryptorhynchinae)



*Smicronyx
quadrifer*
(Eirrhiniinae)



GRANARY
WEEVIL
(Rhynchophorinae)



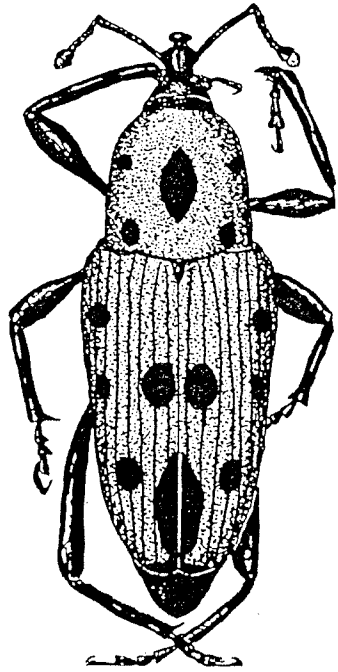
Myrmex (Myrmecinae)



ALFALFA WEEVIL
(Hyperinae)

Order Coleoptera
 Suborder Polyphaga
 Superfamily Curculionoidea

Family Curculionidae
 Weevils



Rhodobaenus tredecimpunctatus



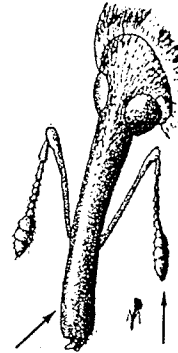
Sitona



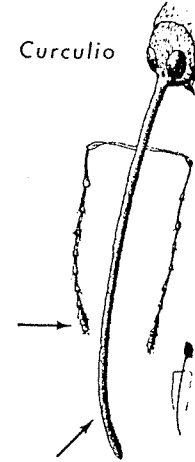
Otiorhynchus



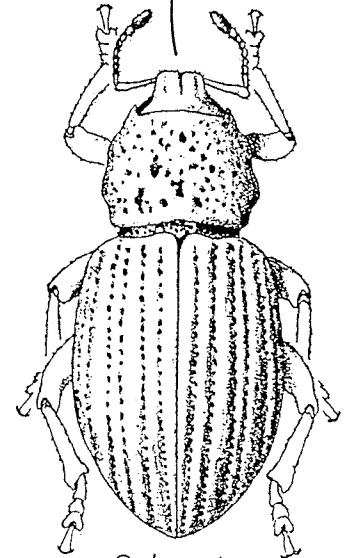
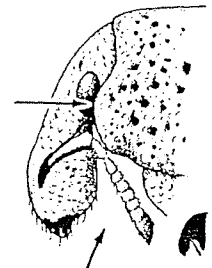
Sphenophorus



Anthonomus



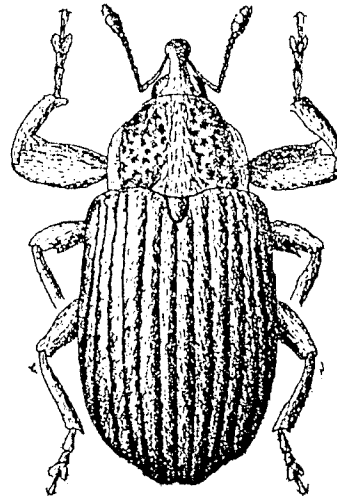
Curculio



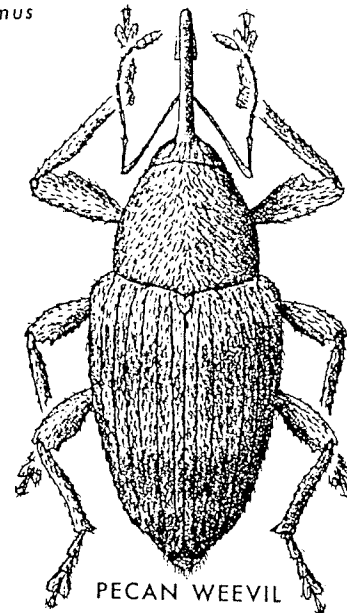
Ophryastes
 (Leptopiinae)



WHITE-FRINGED BEETLE
 (Thylacitinae)



BOLL WEEVIL
 (Anthonominae)

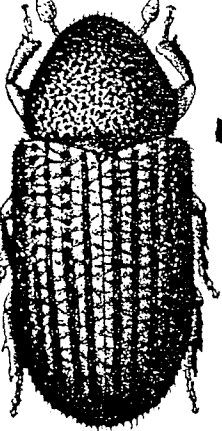


PECAN WEEVIL
 (Curculioninae)

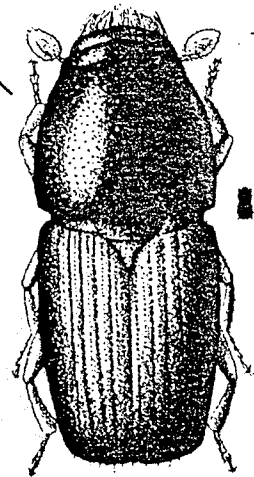
Order Coleoptera
 Suborder Polyphaga
 Superfamily Curculionoidea

Family Scolytidae
 Bark and Ambrosia Beetles

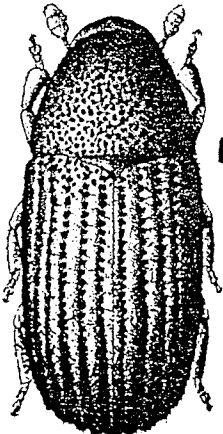
CLOVER ROOT BORER



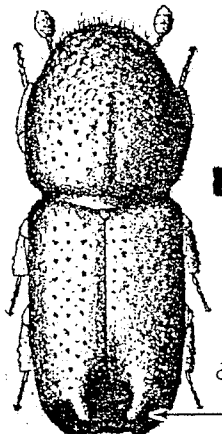
(Hylesininae)



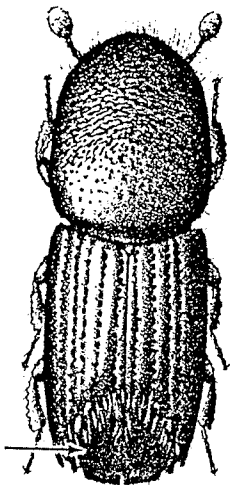
SMALLER EUROPEAN
 ELM BARK BEETLE



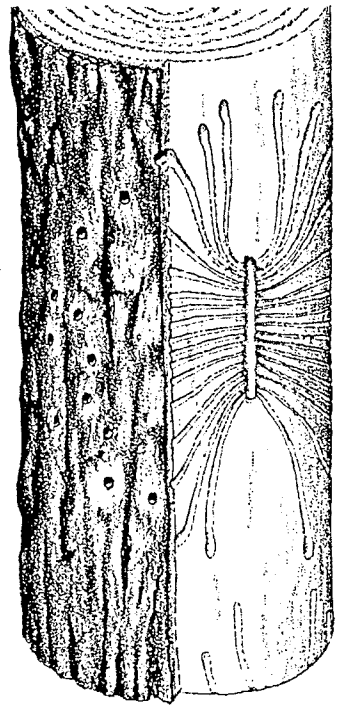
NATIVE ELM
 BARK BEETLE



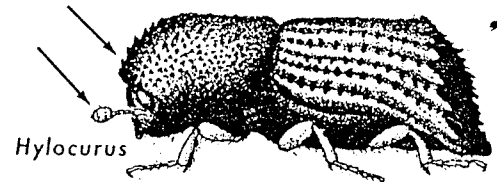
Pityogenes



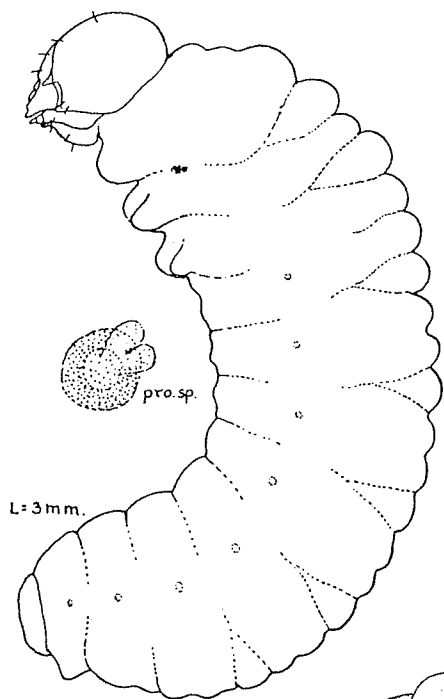
CALIFORNIA
 FIVE-SPINED IPS
 (Ipiniae)



Portion of tree limb showing
 Hickory Bark Beetle engraving

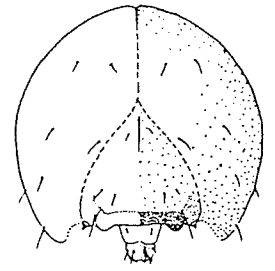


Hylocurus
 (Hylesininae)

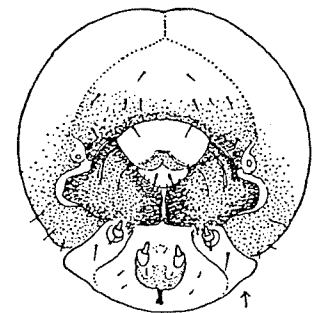


L=3mm.

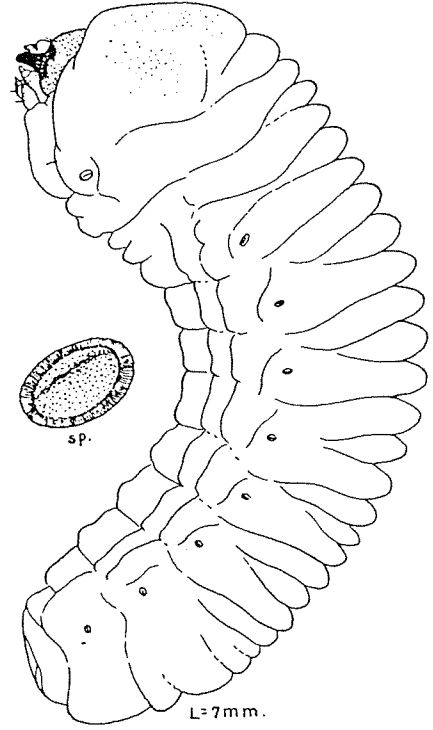
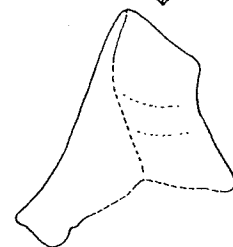
CLOVER ROOT BORER



CLOVER ROOT BORER



LARGER SHOT-HOLE BORER



L=7mm.

LARGER SHOT-HOLE BORER