

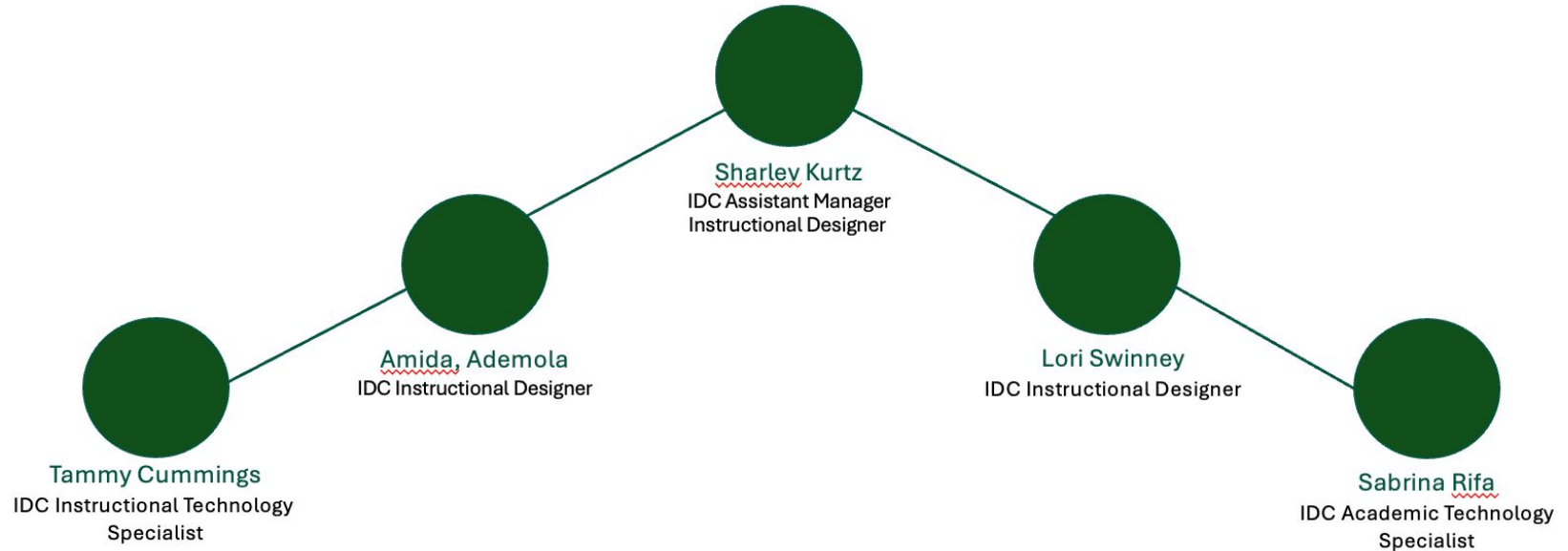
# Human-Driven Generative AI and Authentic Assessment Design

Presenters:

Amida, Ademola, PhD

Lori Swinney, PhD

# Team Introductions



# Today's Outcomes

- Explain what GenAI is and how it works.
- Explore prompting techniques to improve AI-generated content.
- Describe a strategy for creating authentic assessments using GenAI

# Participants Survey

- Have you used any GenAI tools like ChatGPT in your course?
- Are you planning to use GenAI in your course?
- What areas are you thinking about using it?

# Reactions on ChatGPT



Schools Ban ChatGPT Amid Fears of Artificial Intelligence-Assisted Cheating

FACING AI

## Faculty Members Still Aren't Sure What to Make of ChatGPT

By *Eva Surovell* | March 16, 2023

MIT  
Technology  
Review

Featured Topics

**ChatGPT is going to change education, not destroy it**

## Advice | Why You Should Rethink Your Resistance to ChatGPT

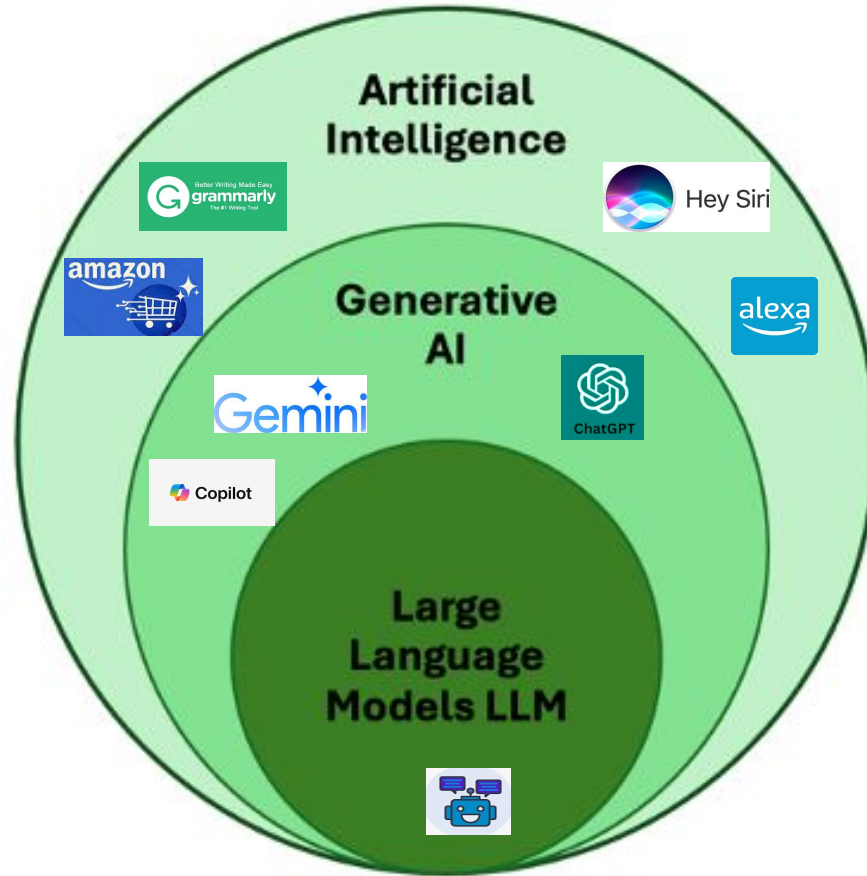
NDSU

INSTRUCTION, *By Flower Darby* | November 13, 2023  
INFORMATION TECH



# **PART 1:** **What is Generative AI (GenAI) and how it works?**

# What is GenAI?



# How do AI text generation tools work?

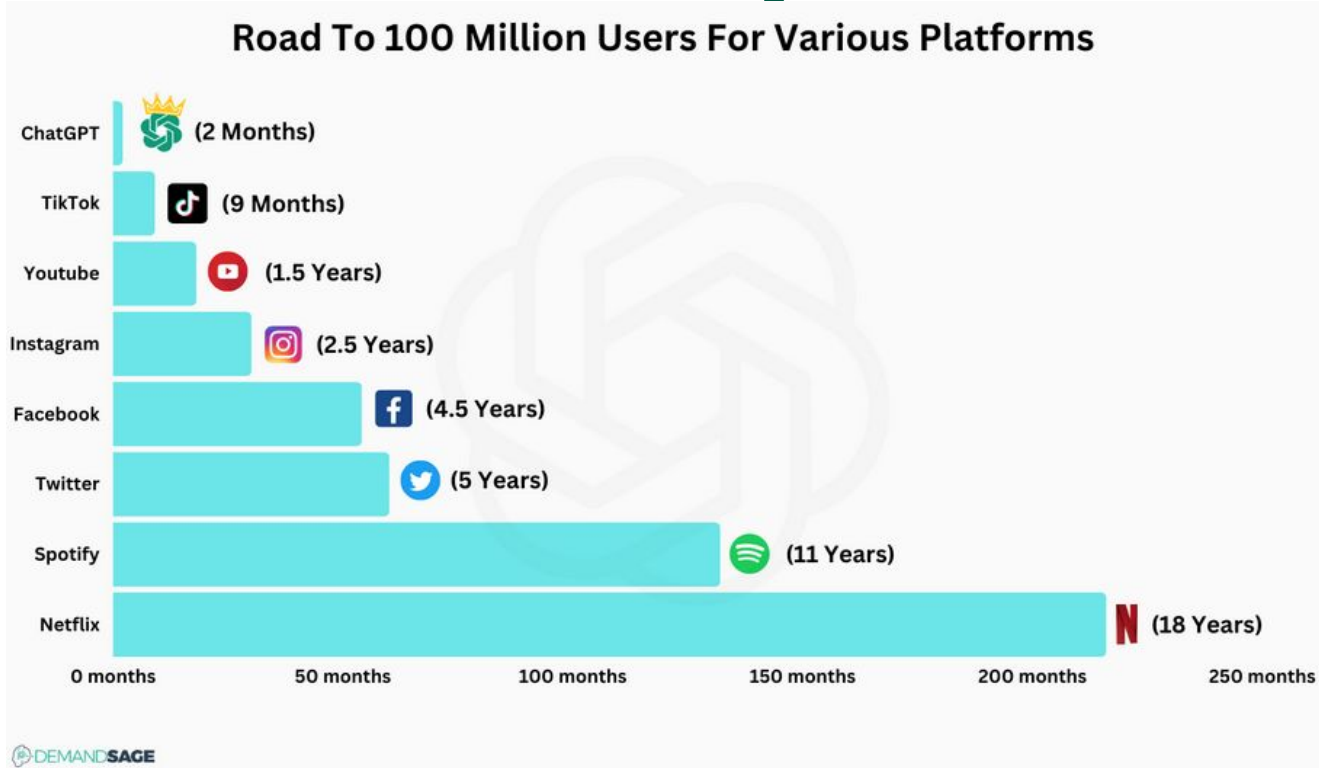
If you ask GenAI a question, you are giving the GenAI an instruction along the lines:

*“Here’s a fragment of text (I like my bagel with...). Tell me how this fragment might go on. What words are likely to come next?”*

“It’s just adding one word at a time”



# Fun Fact: Do you know!



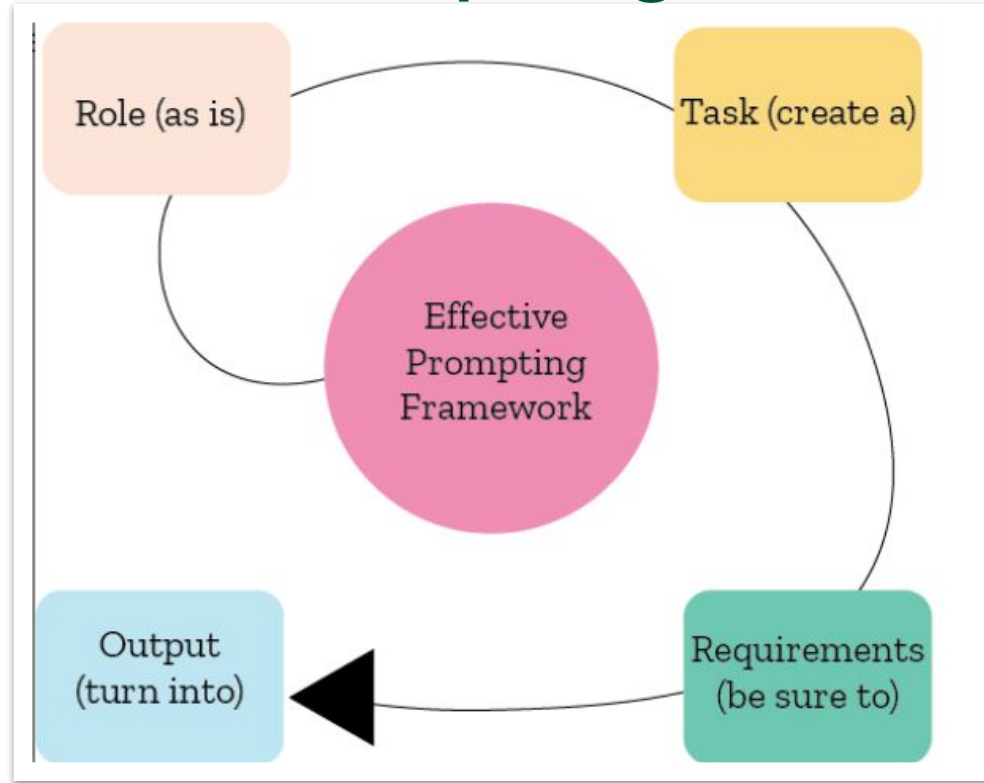


## **PART 2:** **Effective prompting techniques**

# What is Prompting?

- A prompt is an instruction given to a language model to elicit a specific output.
- An effective prompt must include:
  - Clear instructions
  - Provide reference text
  - Split complex tasks into simpler subtasks
  - the appropriate phrases, words, and sentence

# Effective Prompting Framework



# Prompt Example

Worse	Better	Best
Write a paragraph about why group work is important.	Act like an experienced teacher. Write a paragraph about why group work is important.	Act like an experienced teacher. Write a paragraph about why group work is important. Make the writing engaging but smart. Make sure there is an example.



## **PART 3:**

# **Strategies for creating authentic assessments with GenAI**

# “I need 10 types of authentic assessments for college students”

Sure, here are ten types of authentic assessments that can be effective for college students:

1. **Case Studies:**
2. **Research Projects:**
3. **Presentations:**
4. **Portfolios:**
5. **Simulations & Role-Playing:**
6. **Project-Based Learning:**

“Provide ten more with descriptions”

11. **Design Challenges:** Students are given a design problem or challenge related to their field, such as ...
12. **Field Work Reports:** Students gather data or conduct observations in real-world settings and produce reports based on their findings...
13. **Case Presentations:** Similar to case studies, students present their analysis and solutions to a...

# Help from Bloom's Taxonomy

## Assignment

- Analyze
  - Research Project
    - Exoskeleton
    - Community/local





# Can GenAI Help You?

- What is **your** assignment objective?
- What type of help do you need?
- Ideas for research projects?
- Project details?
- Can GenAI help **you** with ideas and getting started?

# Creating a Prompt

You are an expert Biology instructor. You would like to design a research project for students to demonstrate the exoskeleton and why it is important to the water areas in your community.

# Creating a Prompt

You are an expert Biology instructor. You would like to design a research project for students to demonstrate the exoskeleton and why it is important to the water areas in your community.

# Creating a Prompt

You are an expert Biology instructor. You would like to design a research project for students to demonstrate the exoskeleton and why it is important to the water areas in your community.

# Creating a Prompt

You are an expert Biology instructor. You would like to design a research project for students to demonstrate the exoskeleton and why it is important to the water areas in your community.

# Revise Prompt with More Direction

**“You are an expert Biology instructor teaching undergraduate students in a public research university. You would like to design a research project for students to demonstrate the exoskeleton and why it is important to the water areas in your community. This project will be a semester-based activity over three months with group of 3 students. Provide three examples”.**

# Three Projects: Next Steps

- Project 1: "The Impact of Crustacean Exoskeletons on Aquatic Ecosystem Health"
- Project 2: "The Role of Insect Exoskeletons in Aquatic Food Webs"
- Project 3: "Assessing the Effects of Pollution on Exoskeleton Integrity in Local Aquatic Species"

# What Works, What Needs Improvement?

- Project 3: "Assessing the Effects of Pollution on Exoskeleton Integrity in Local Aquatic Species"
- This project aims to assess how pollution affects the exoskeleton integrity of local aquatic species. Students will evaluate the health of exoskeletons in polluted versus non-polluted water areas and its implications for species survival.



# Example of Role Playing

“You are a **Nursing professor at a 4 year public university**. Your course includes **3rd year nursing students on Gerontologic Nursing**. Develop 10 role playing scenarios to **help the students practice listening to and questioning** an elderly patient to complete an initial assessment. Create examples that include patients with a variety of questions, complaints, and difficulty communicating”.

What is missing? What would help make this more authentic?

## **Scenario 1: Managing Multiple Complaints**

**Patient:** Mrs. Smith, an 82-year-old woman

**Situation:** Mrs. Smith reports feeling fatigued, having difficulty sleeping, and experiencing frequent dizziness.

**Objective:** Students should listen to Mrs. Smith's multiple complaints, prioritize her symptoms, and ask relevant follow-up questions to assess the potential causes and severity of her issues.

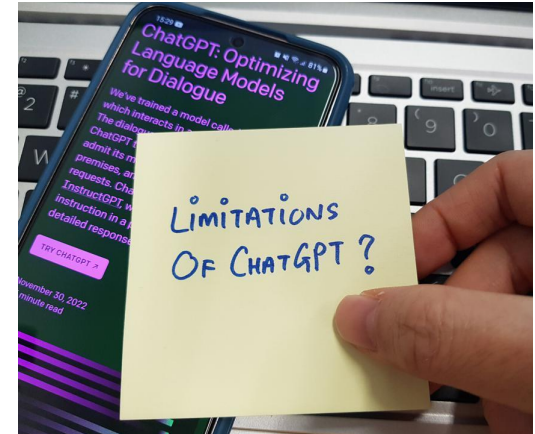
**Example Questions:**

- "Can you describe the dizziness you're experiencing? Is it constant or does it come and go?"
- "How long have you been feeling fatigued and having trouble sleeping?"

## **Scenario 2: Difficulty Communicating Due to Hearing Loss**

# Limitations

- Lack understanding (superficial knowledge)
- Contextual limitations
- Ability to reason & critical thinking
- Bias and fairness
- Quality and reliability
- Creativity and innovation
- Legal & privacy concerns



# Questions



*Questions are the path to learning*

# LAIC Resources

- Knowledge Base Article pages
  - [Teaching and Learning with Generative AI](#)
  - [Introducing Generative AI in Higher Education](#)
- Professional Development
  - [GenAI Fundamentals: Understanding and Selecting an Appropriate AI Tool](#)
  - [Teaching with GenAI - Designing assignments with AI](#)
- Book Discussion: [Teaching with AI](#)
- Faculty Cert. Course: [Teaching with AI for Educators](#) – Available in Fall 24