

# Steeling the Highway

Regent, ND



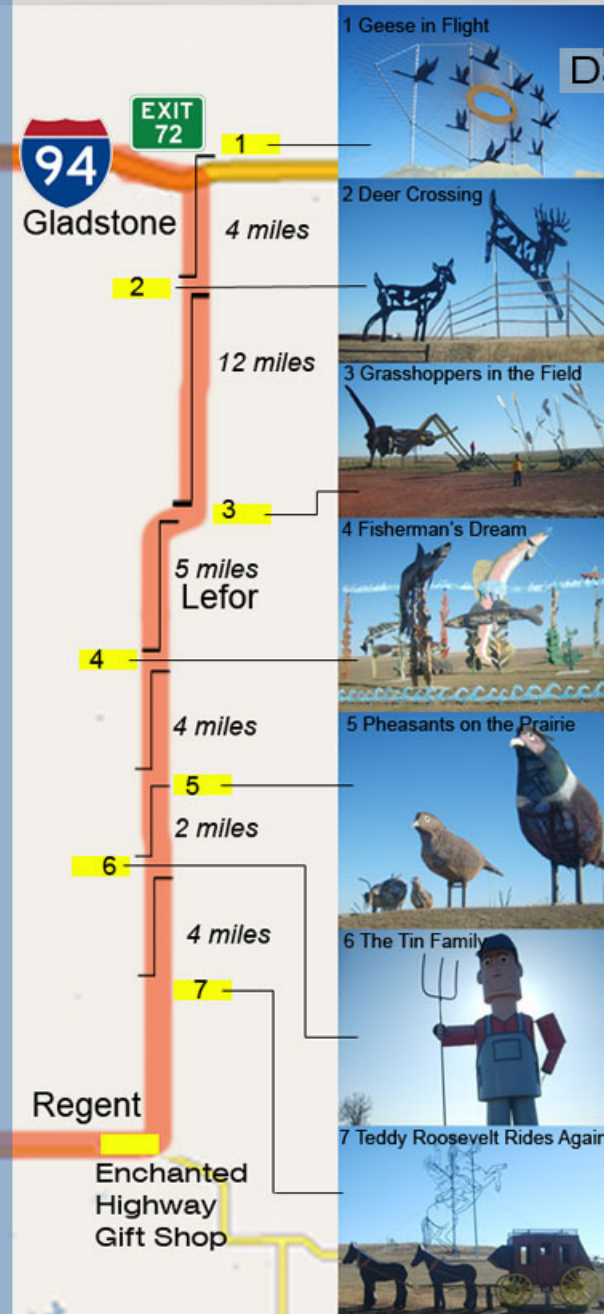
Don't feed the birds

## Regional Map



## The Enchanted Highway

11 miles East of Dickinson



## Day Trip from Medora to Dickinson and Regent

- 9:00 Start the day headed **west on I-94**, from Medora hotel to Dickinson
- 9:35 Arrive in Dickinson off **exit 61**, head **south on Hwy 22**, then left on Museum Drive, and visit Dinosaur Museum
- 11:00 Go to Joachim Regional Museum, right next to Visitor Center, and look around inside at old artifacts and learn some history about the settlers
- 11:30 Leave museum and head to the Prairie Outpost Park, **east** of the Dinosaur Museum
- 11:50 Head **south on Sims Ave** down to Villard St, which is downtown Dickinson and look at old architecture of the buildings
- 12:05 Stop to eat at Badlands Brew Roasterie (**located on 215 Sims St**)
- 12:45 Head **east** back to 3rd St and **head north to I-94** and go **west towards Enchanted Highway**.
- 1:00 Take **exit 72** and take a **left** to the first gravel road on the right and head up the winding road of metal geese to the first sculpture, **Geese in Flight**.
- 1:15 Head **south 4 miles** toward the next sculpture, **Deer Crossing**, and stop for about 10 minutes.
- 1:25 Head **south 12 miles** to **Grasshoppers in the Field**, which was the fourth sculpture erected.
- 2:00 Head **south 5 miles** to the **Fisherman's Dream**, which displays seven different fish and stop for a 10 minutes and head further south to **Pheasants on the Prairie (4 miles)**
- 2:10 Keep **heading south** to the **Tin Family (2 miles)**, then **continue south** to the final sculpture on the highway, **Teddy Roosevelt Rides Again (4 miles)**, then head to the hometown of metal artist Gary Greff, Regent.
- 3:00 Arrive in the town of Regent and stop at the Enchanted Highway Gift Shop and visit with Gary Greff about his work.
- 3:30 Head to the **Little Missouri National Grasslands** (Highway 21 west, take right at 22, left back onto 21, then left (south) on Hwy 85 going through Amidon), **RIGHT** (North on FH3), **RIGHT** at fork onto 772, **Right** at fork onto 780 going East, **LEFT** at T going North on 767, **LEFT** at T going Northwest on 765, **RIGHT** at T going East on 762, **LEFT** at T going West on 740, **STOP** at Initial Road, To see Initial Rock, theres are backroads there, (approximately 30 minutes, CUSTER'S HISTORIC TRAIL), **RETRACE** steps back onto 762, **RIGHT** at fork going North on FH3 follow all way back to **Medora**.
- 7:00 Arrive back in Medora and stop at the Iron Horse Bar to have a meal to finish off the day.

# A Day in Dickinson



## Things to do

Things to do	GPS Coordinates	Phone
1. Dakota Dinosaur Museum	N 46° 53' 41" W 102° 47' 00"	701-225-DINO
2. Joachim Regional Museum	N 46° 53' 41" W 102° 47' 02"	701-456-274
3. Prairie Outpost Park	N 46° 53' 42" W 102° 46' 56"	701-456-6225 200
4. West River Community Center	N 46° 53' 13" W 102° 48' 52"	701-456-2070

## Unique Retail

5. Buying ND Pottery	N 46° 53' 28" W 102° 46' 59"	
6. Memories by Joey	N 46° 52' 43" W 102° 47' 9"	701-225-5171
7. My Friends House & Sims Street Mercantile	N 46° 52' 52" W 102° 47' 42"	701-225-6660
8. Sisters Gifts and Antiques	N 46° 52' 44" W 102° 47' 8"	701-483-0014
9. The Village Gift Shop	N 46° 52' 44" W 102° 47' 2"	701-225-5434
10. White Drug	N 46° 54' 4" W 102° 47' 24"	701-225-4421

## Local places to eat

11. Brick House Grille	N 46° 52' 43" W 102° 47' 08"	701-483-9900
12. Elk's House	N 46° 53' 54" W 102° 47' 46"	701-483-1137
13. Badlands Brew & Roasterie	N 46° 52' 51" W 102° 47' 07"	701-483-2759
14. Serendipity Coffee House & Bistro	N 46° 53' 12" W 102° 48' 40"	701-483-1946

## Places to stay

15. Camp on the Heart	N 46° 52' 15" W 102° 48' 40"	701-225-9600	387 S. State Ave.	www.camponthetheart.com
16. North Park Campground	N 46° 52' 51" W 102° 46' 42"	701-227-8498	753 Chestnut Lane	www.campnorthpark.com
17. Patterson Lake Recreation Area	N 46° 50' 52" W 102° 49' 39"	701-456-2074	3749 114th Ave. SW	
18. AmericInn Motel & Suites	N 46° 53' 56" W 102° 47' 24"	1-877-890-4400	229 15th St W, Exit 61 off I-94	
19. Comfort Inn	N 46° 53' 53" W 102° 47' 45"	701-264-7300	493 Elks Dr. Exit 61 off I-94	www.daysinn.com
20. Days Inn- Grand Dakota Lodge & Conference		701-483-5600	532 15th St. W, Exit 61 off I-94	www.doublejoutfitters.com
21. Double JJ Outfitters	N 46° 52' 42" W 102° 49' 24"	701-483-6155	10370 East Highway 10	
22. Hartfield Inn B&B	N 46° 53' 3" W 102° 47' 25"	701-225-6710	509 3rd Ave. W, Exit 61 off I-94	
23. Holiday Inn Express	N 46° 53' 52" W 102° 47' 12"	701-456-8000	103 14th St. W, Exit 61 off I-94	www.go.to/nodak
24. Nodak Motel	N 46° 52' 41" W 102° 46' 40"	701-225-5229	600 East Villard, Exit 59 or 64	
25. Oasis Motel	N 46° 52' 45" W 102° 48' 3"	701-225-6703	1000 W Villard	
26. Quality Inn & Suites	N 46° 53' 39" W 102° 47' 8"	701-225-9510	71 Museum Dr., Exit 61 South	www.selectinn.com
27. Select Inn	N 46° 53' 39" W 102° 47' 45"	701-227-1891	642 12th Street W	

## Location

200 Museum Dr.  
1865 Museum Dr. E  
Museum Dr.  
2004 Fairway St.

## Website

www.dickinsonmuseumcenter.org  
www.dickinsonmuseumcenter.org  
www.dickinsonmuseumcenter.org  
www.dickinsonparks.org



# and Regent



## Things to do

1. Hettinger County Historical Society	N 46° 25' 21" W 102° 33' 18"	701-563-4543
--	------------------------------	--------------

## Unique Retail

2. Enchanted Highway Gift Shop	N 46° 25' 19" W 102° 33' 18"	701-563-6400
3. Metal Magic	N 46° 25' 21" W 102° 33' 18"	701-563-4743
4. Prairie Works	N 46° 25' 17" W 102° 33' 24"	701-824-4211

## Local places to eat

5. Cannonball Saloon	N 46° 25' 18" W 102° 33' 21"	701-563-4626
6. Regent Cafe	N 46° 22' 39" W 102° 38' 00"	701-563-4485

## Places to Stay

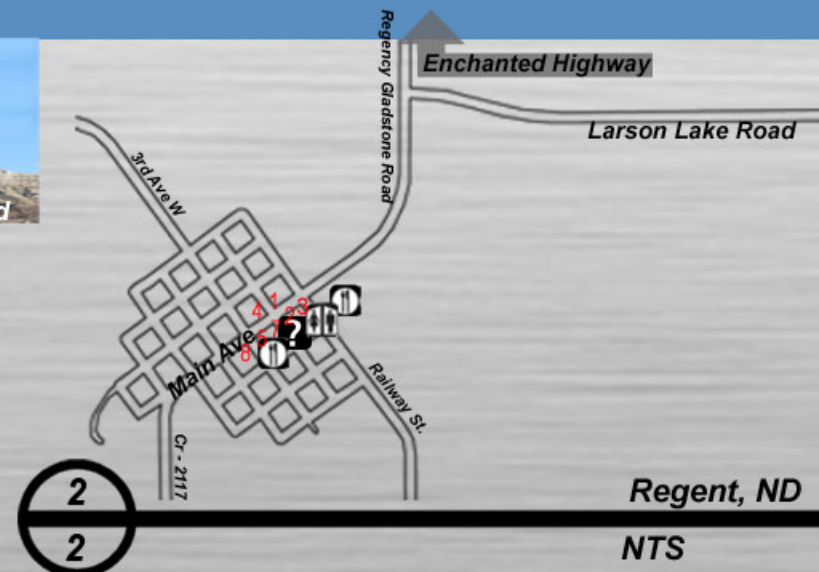
7. Crocus Inn	N 46° 25' 15" W 102° 33' 25"	701-563-4562	50 W 2nd St.	www.crocusinn.com
8. Prairie Vista	N 46° 22' 37" W 102° 38' 03"	701-563-4542	101 Rural Ave. SW	www.prairievista.com

## Location

5 Main Ave. S  
PO Box 184  
PO Box 99

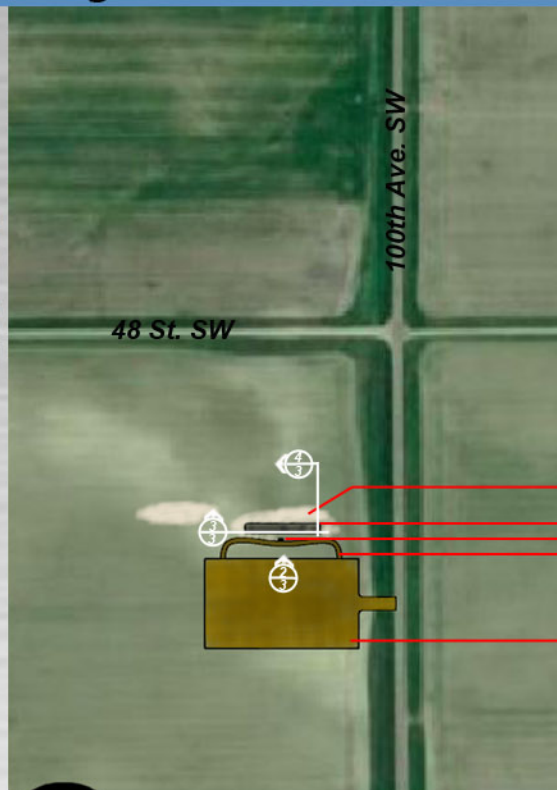
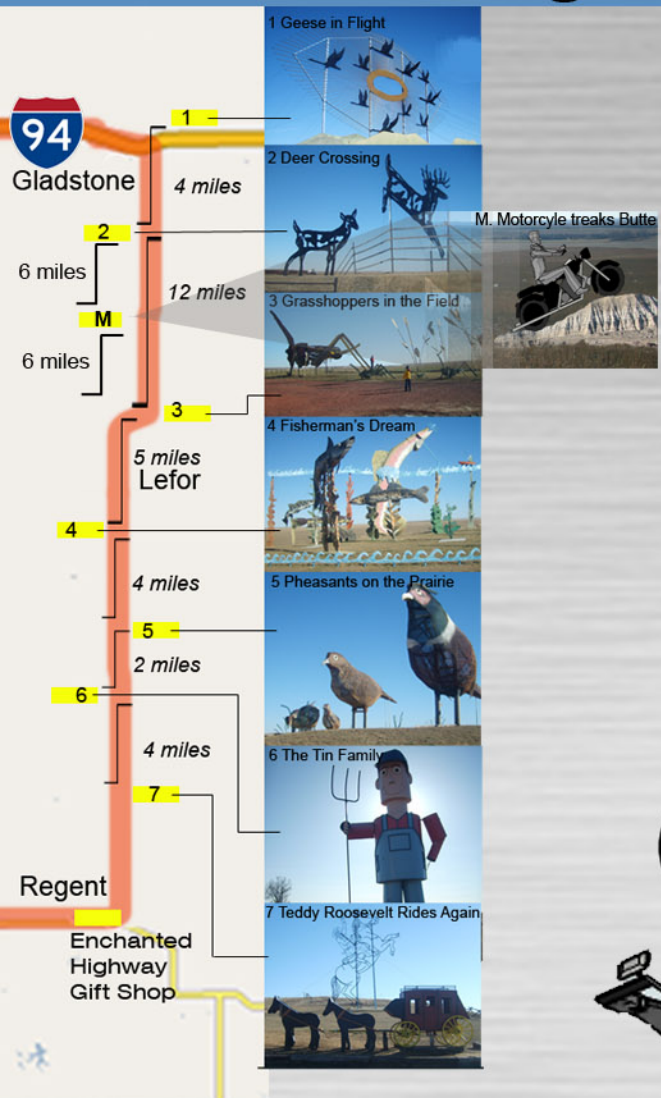
## Website

www.enchantedhighway.net  
www.regentcenex.com  
http://www.prairieworks.org/



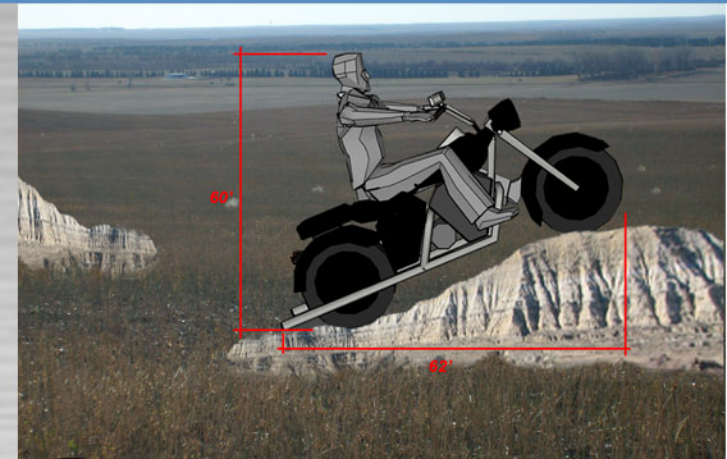
# Enchanted Highway Intervention

# Regent, ND



**1** Plan - Motorcycle Sculpture  
**3** Scale: 1" = 10'

Butte - Steel Motorcycle Sculpture  
 Information Sign  
 Walking Path  
 Parking Lot

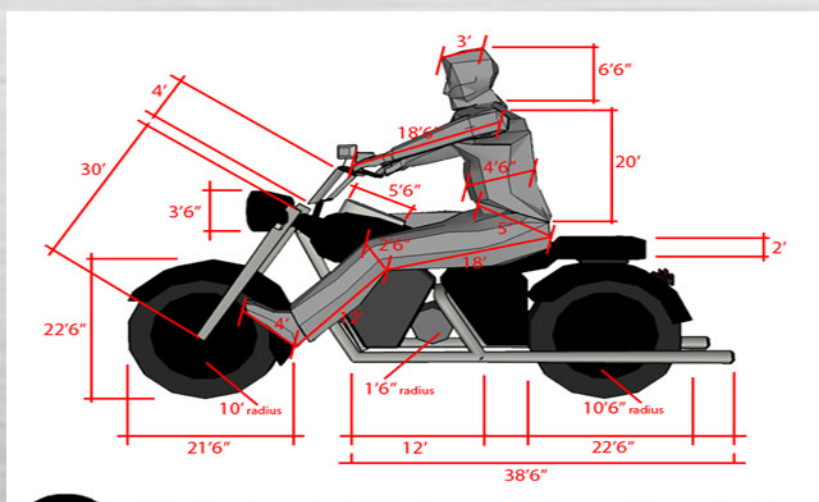


**2** Montage - Motorcycle Sculpture  
**3** NTS

Motorcycle sculpture to be built of steel, The person will be overlaid with 1/4" sheet metal after a frame is constructed of steel rebar.  
 Butte to be constructed by overlaying dyed 1/4" sheet metal over a frame constructed from steel rebar. This will give the effect that the rider is scaling the butte. The butte blends into the landscape with regards to similar buttes found along the Enchanted Highway.



**4** Section - Motorcycle Sculpture  
**3** NTS



**3** Detail - Motorcycle Sculpture  
**3** NTS

regent main street master plan

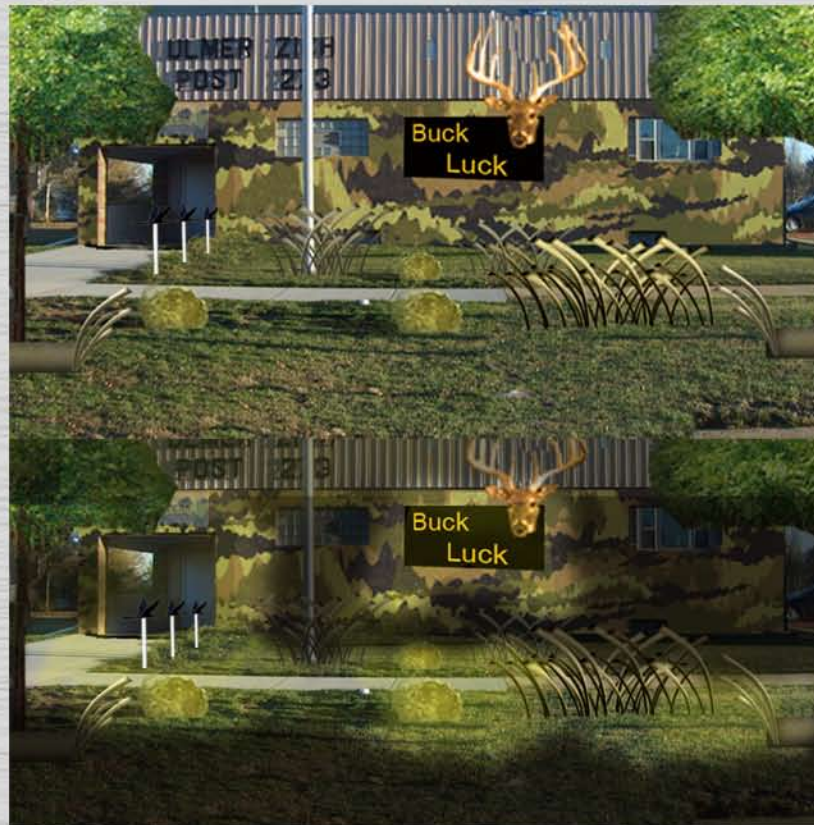


see board 2 for image of south side of main street  
see board 4 for construction documents

An experience for both **night and day**



1 Enchanted Highway Gift Shop day and night perspective



2 Regent Legion entrance day and night

After traveling along the Enchanted Highway, visitors will visit a town molded from the same material that the highway was created: STEEL. Native grasses and rolling tumbleweed, constructed from steel, will be found along the Main Street strip. During the day, these steel elements will provide areas for visitors to converse and relax. In the evening, they will be led to Regent's attractions from the glowing light of the grasses and tumbleweed. This lighting will represent the glow bouncing off the tumbleweed and grass from the moonlit sky.



a1

a2



a2

a3



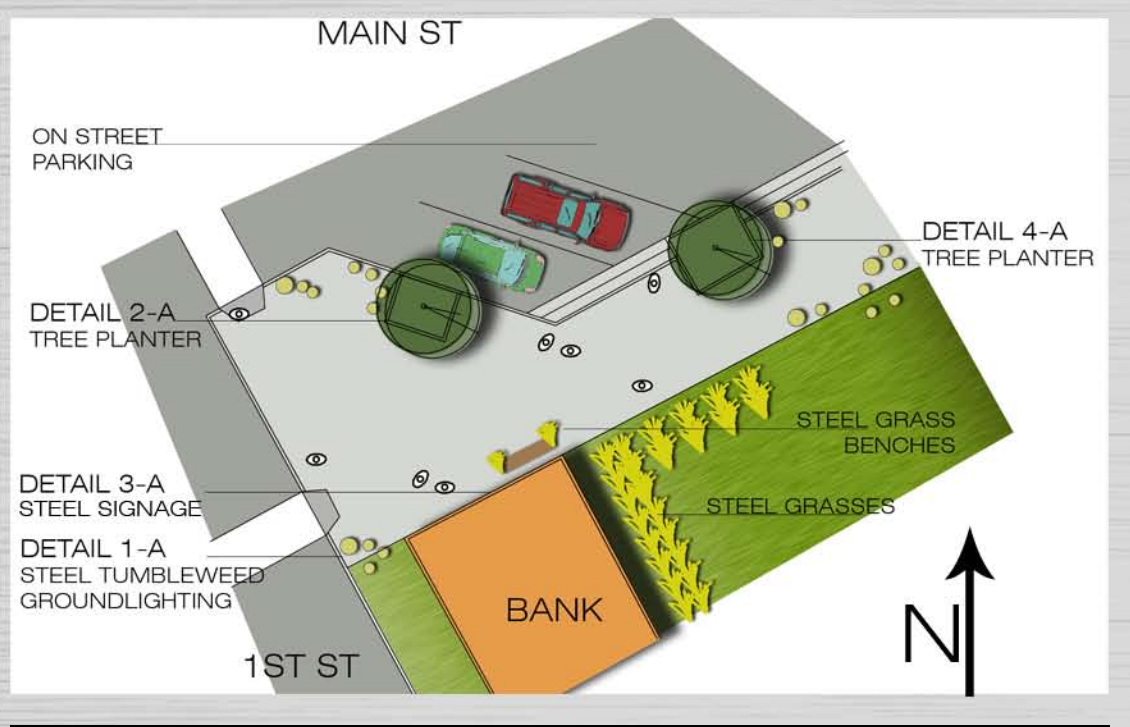
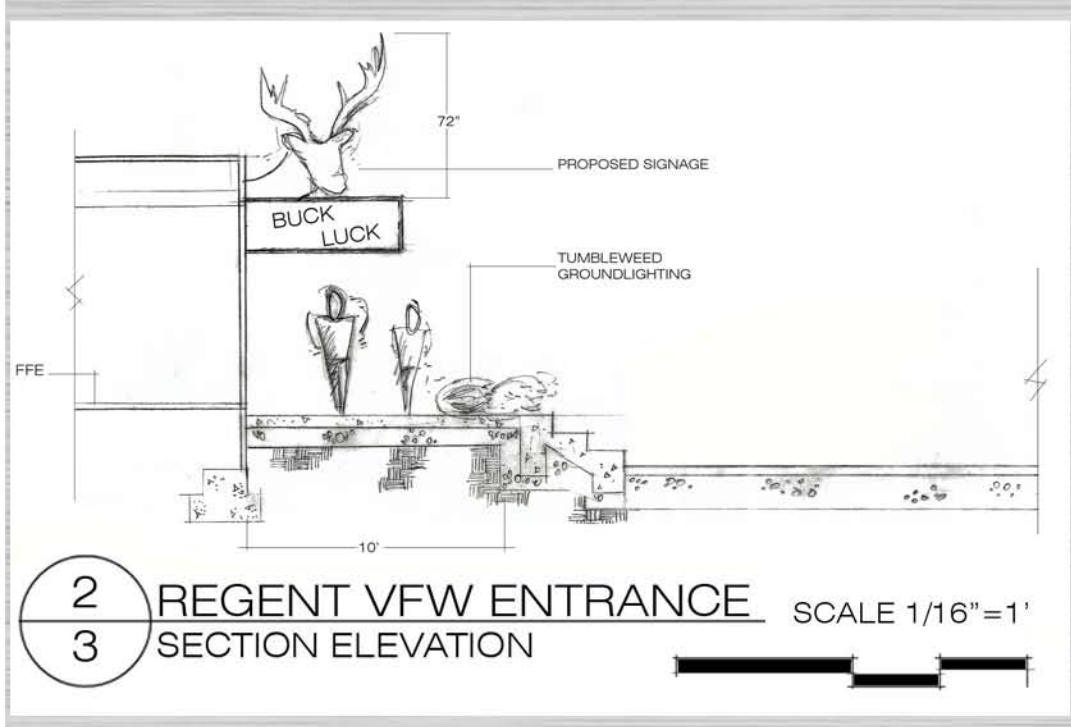
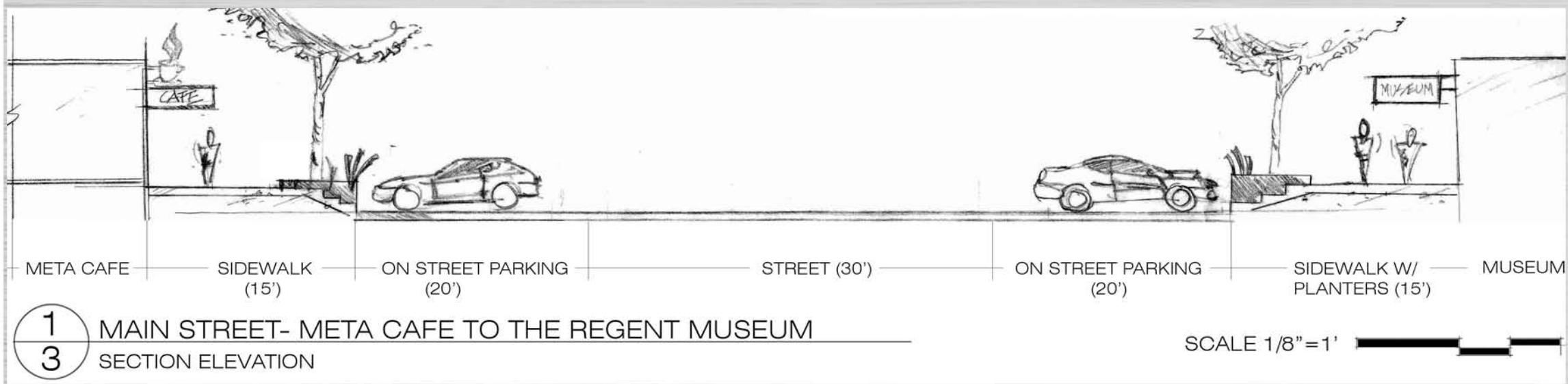
a3

a4



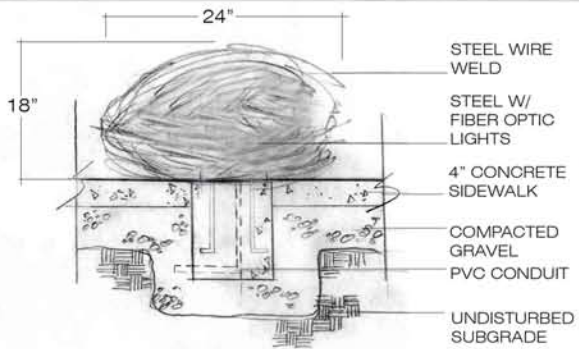
a4

a5

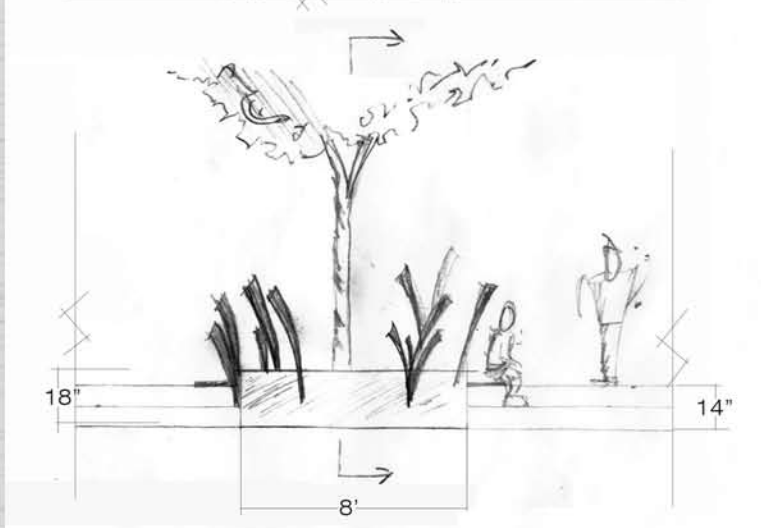
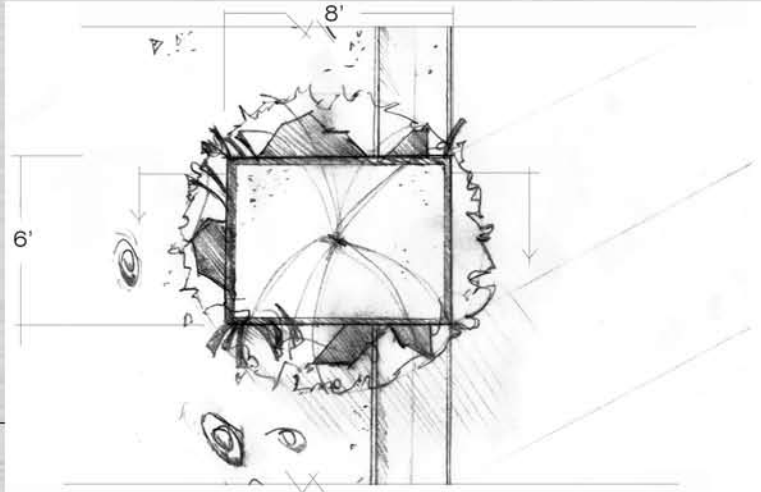
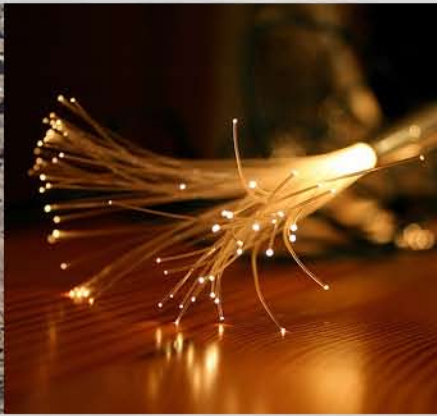


regent main street 1st ave  
scale 1/16" = 1'

see board 4 for construction documents

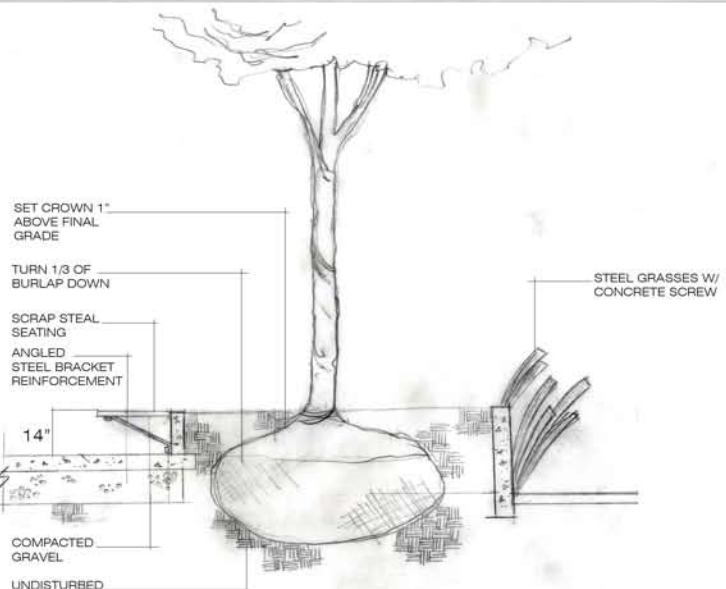


STEEL WIRE WELD  
 STEEL W/ FIBER OPTIC LIGHTS  
 4" CONCRETE SIDEWALK  
 COMPACTED GRAVEL  
 PVC CONDUIT  
 UNDISTURBED SUBGRADE

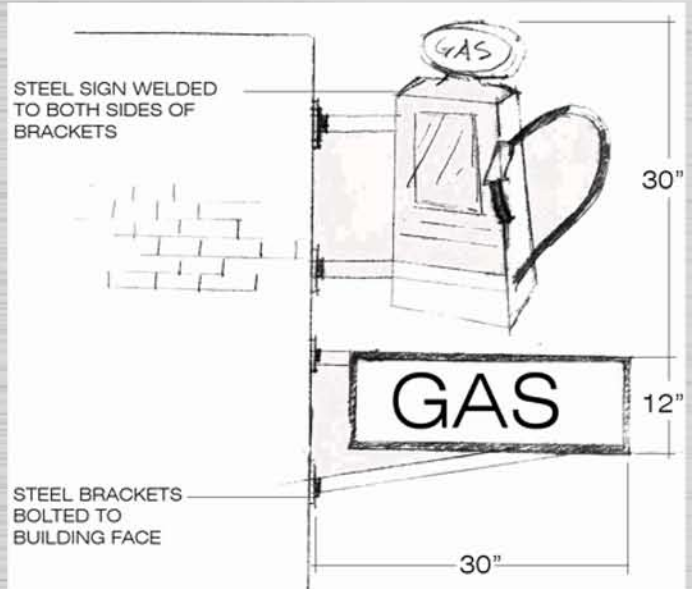


TREE PLANTER DETAIL  
 DETAIL 4-A

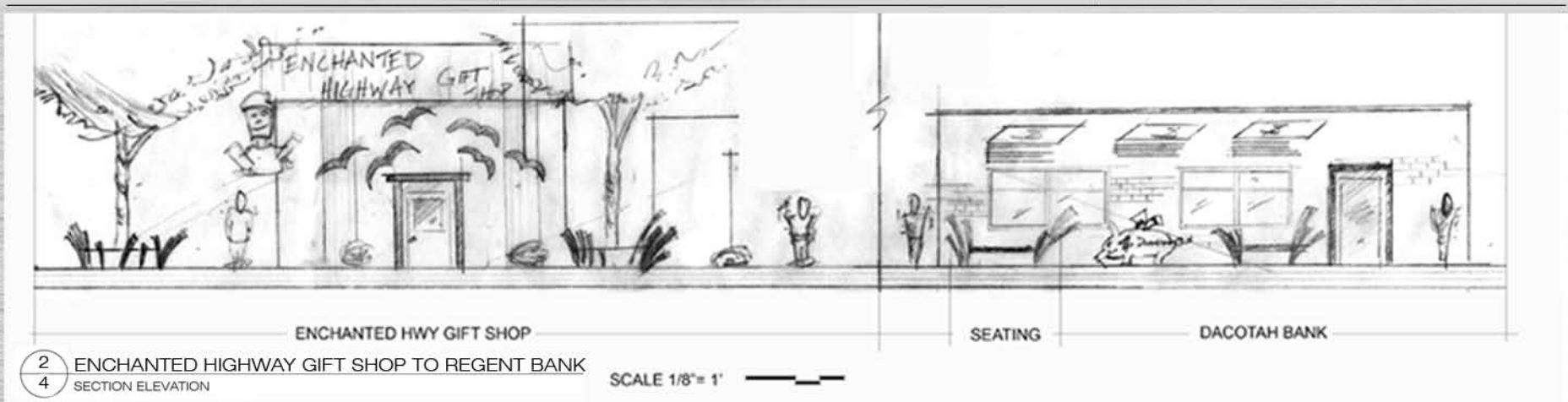
STEEL TUMBLEWEED LIGHTING  
 DETAIL 1-A



TREE PLANTER W/ SEATING  
 DETAIL 2-A



STEEL SIGNAGE  
 DETAIL 3-A



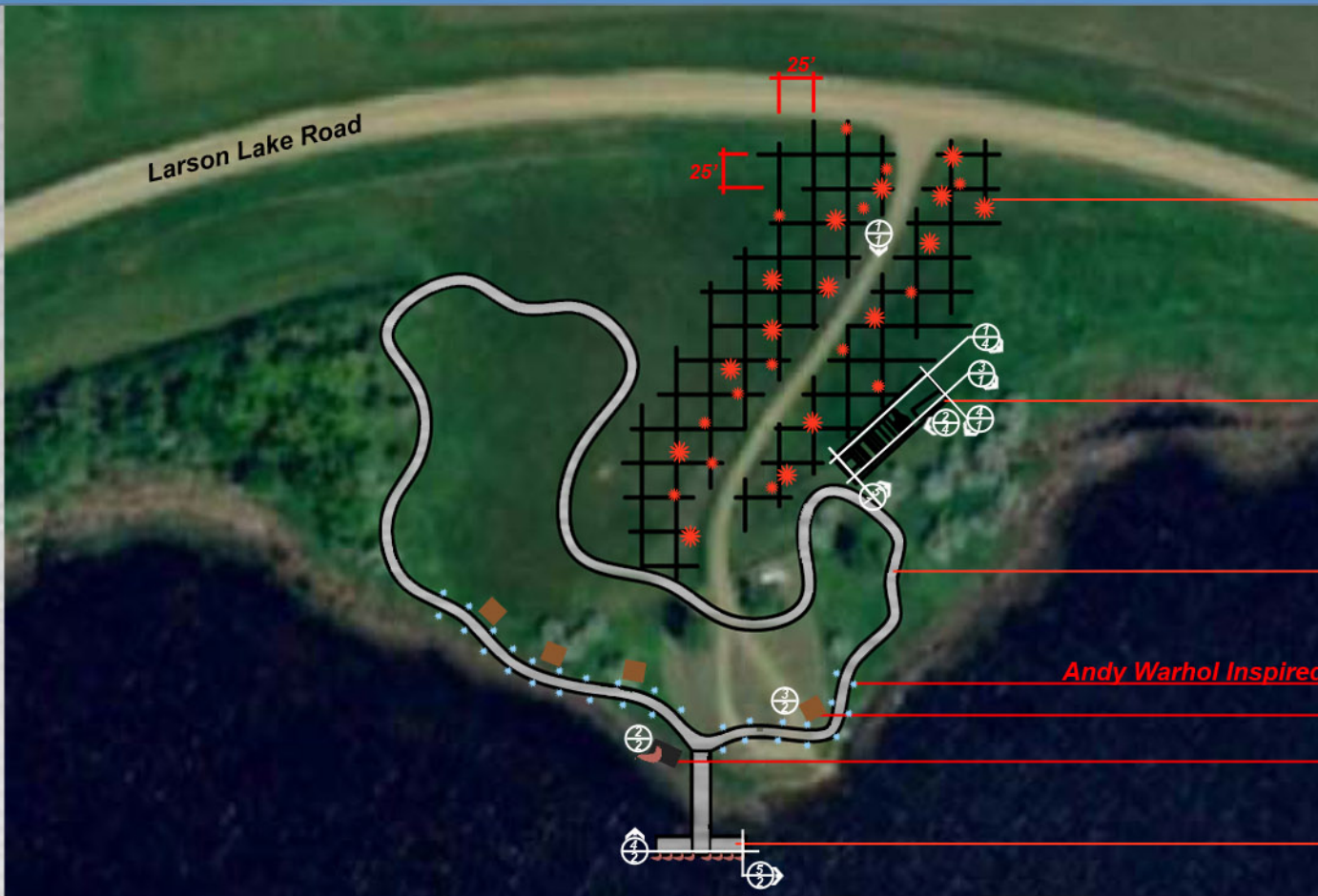
2  
4

ENCHANTED HIGHWAY GIFT SHOP TO REGENT BANK  
 SECTION ELEVATION

SCALE 1/8" = 1'

# Larson Lake Intervention

# Regent, ND



Pheasant Steel Sculptures

Proposed Playground

Path System

Andy Warhol Inspired

Pheasant in Flight Hunting Blinds

Larson Lake Sign

Proposed Dock



2  
2

Photomontage Dock

Courtesy of Matthew



3  
2

Photomontage Path System

Courtesy of Matthew

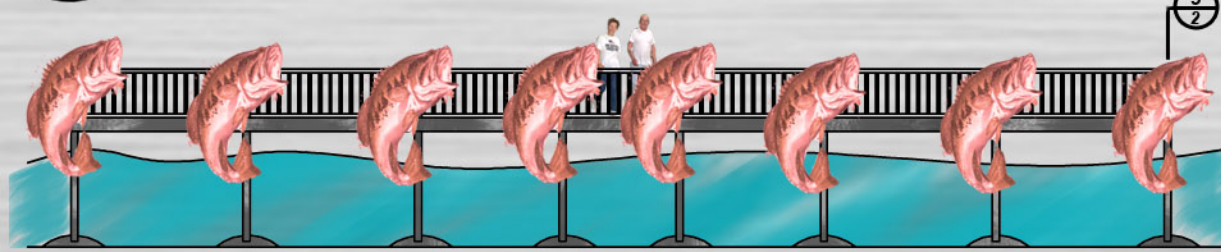
1  
2 Plan Larson Lake

North

Scale: 1" = 10'

2'6" 10'0"

2'6"

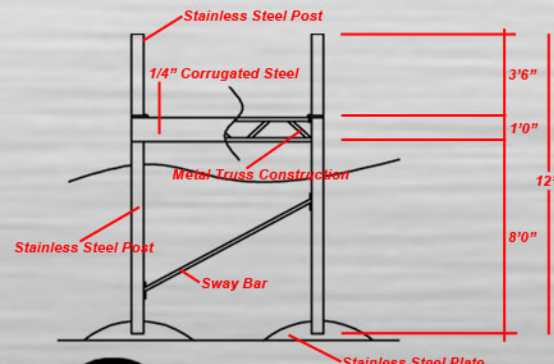


4  
2 Dock Section

Scale: 1" = 16'

4' 16'

8'



5  
2 Dock Detail

- \* This dock will be constructed from stainless steel posts - 1/2" in diameter.
- \* Dock is removable, the posts thread into steel foot plates and a sway bar is include for support.
- \* Dock is made to resist rusting and mother natures aging processes.
- \* End of docking is left open, on both ends, so users can jump into the water.

Scale: 1" = 8'

2' 8'

4'



# Larson Lake Intervention

Regent, ND



1 Photomontage of Larson Lake at Night  
1 NTS

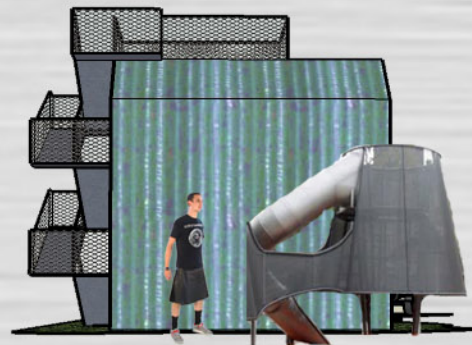


4 Playground Section  
1 Scale: 1" = 8' 2' 8' 4'

This section shows the slide which passes into the rubber play system. This rubber matting is dyed yellow to mimic elements of a grain elevator. It also gives the children a soft surface to land on as well as play on. Once they reach the bottom of the slide they can continue on and explore the grain truck. This is placed here to educate and entice young children's minds with regards to the farming industry and its processes. This also ties the children into Regent and its surroundings.



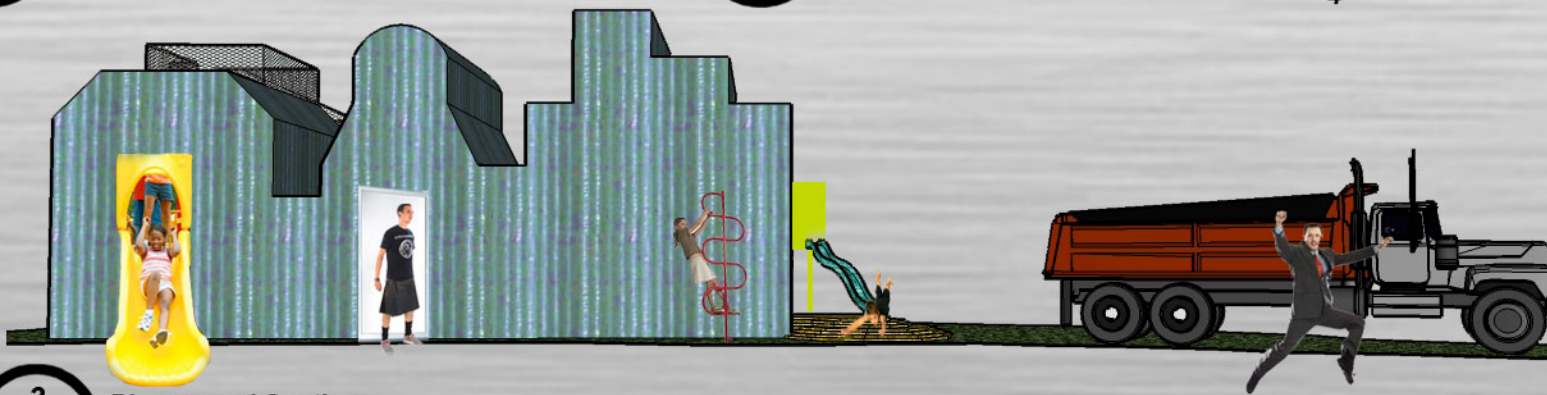
2 Photomontage Park & Entrance Road  
1 NTS



5 Playground Section  
1 Scale: 1" = 8' 2' 8' 4'



Inspiration and design was developed from this picture. It shows a network of stairs and small chutes running up the side of the building. This was mimicked in my design and incorporated through climbing opportunities for small children as well as their parents whom may join them.

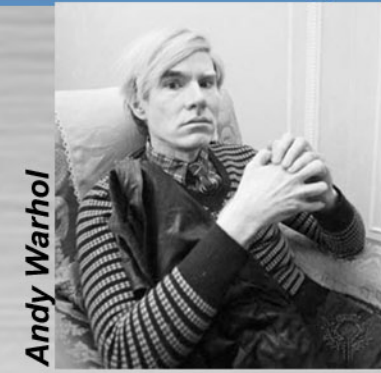


3 Playground Section  
1 Scale: 1" = 8' 2' 8' 4'

The section depicts how this playground will be used. There are opportunities for climbing, sliding, running, walking, and exploring the unknown. The design and its elements encompass the surrounding landscape and other features encountered during the day trip.

# Larson Lake Intervention

Regent, ND



Andy Warhol



Pop Art

Design details inspired by Andy Warhol's use of unique colors to create pop art. This called for the use of extravagant and flamboyant color schemes,

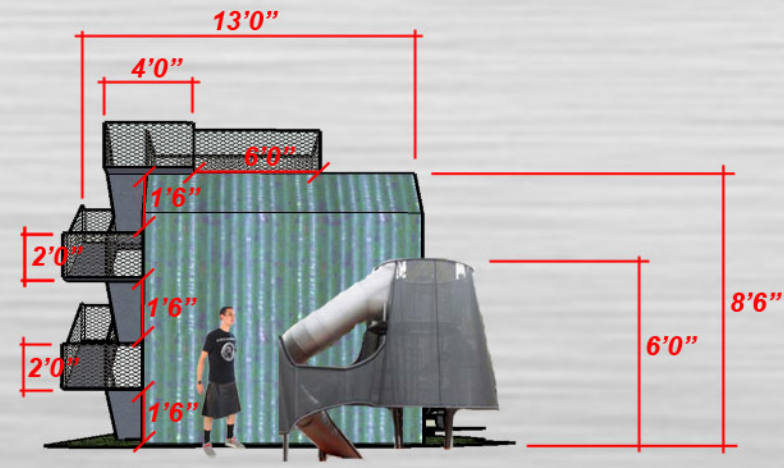


1 Playground Section  
 Scale: 1" = 8'  
 2' 4' 8'

- \* Playground incorporates many elements to keep kids active through running, sliding, and climbing
- \* Playground fits nicely with the surrounding landscape because it was modeled and constructed from elements from the Regent area
- \* Playground incorporates a slide into a modular rubber matting, this simulates corn dumped by a grain truck and the children can explore this design detail as well



2 Playground Perspective  
 NTS



3 Playground Detail  
 Scale: 1" = 8'  
 2' 4' 8'

- \* Playground is built and modeled after the design of a grain elevator
- \* Corrugated steel shall be stained to match work of Andy Warhol
- \* Playground incorporates many elements of a modular playground - slides, climbing poles, and steel structures for climbing

